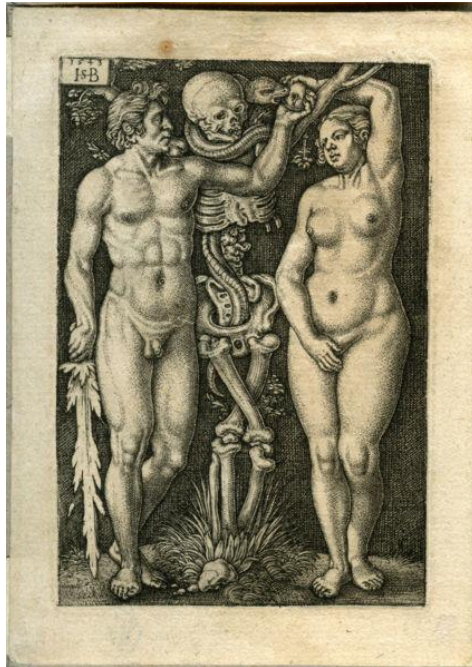


Carleton University
Department of English Language and Literature
ENGL 4304A Fall 2014

Renaissance Drama: Desire and Death



Wed. 8:35-11:25

SA 403 (Please confirm location on Carleton Central)

Instructor: Dr. David Stymeist

Office: 1819 DT / 1929 DT

Office Phone: TBA

Email: dstymeist@yahoo.ca

Office Hours: Weds. 12:30-1:30, or by appointment.

Course Description

Long before films such as *Fatal Attraction*, there has been an intimate connection between eroticism and death. Shakespeare once tellingly wrote that “desire is death.” The dramatic writers of the Renaissance were deeply invested in exploring the fatal aspects of sexual longing and the eroticism of death. The paradoxical and yet commonplace pairing of love and death in the era can help to reveal the inner workings of the Renaissance mind. Through a critical examination of plays from the English Renaissance, this course looks at how early English playwrights represented the relationships between desire, transgression, and mortality.

The cultural, political and intellectual contexts of individual plays will also be discussed

in detail, as well as the social and economic place of the stage in early modern England. The practice of drama in the period will be examined through various critical and theoretical methodologies, including Feminist historiography, Queer theory, Cultural Materialism, and New Historicism.

Classes will consist of a combination of lectures and discussion. I expect every student to attend lectures and come prepared to engage in a lively discussion of the plays. As this is a fourth year course, classes will especially emphasize active learning. The more you are willing to put into the class, the more you will get out of it!

Primary Texts

Anonymous. *Arden of Faversham*.

Ben Jonson. *The Alchemist*.

Francis Beaumont. *The Knight of the Burning Pestle*.

Christopher Marlowe. *Edward II*.

John Webster. *The Duchess of Malfi*.

* All texts will be available at Octopus Books, 116 Third Avenue, just off Bank Street (233-2589) / www.octopusbooks.ca

Course Requirements

In-Class Performance/Essay	25%
Research Essay	40%
Participation	10%
Term Test	25%

CLASS SCHEDULE (Tentative)

Sept. 10	Class Introduction. Cultural Contexts: The Place of the Stage
Sept 17, 24	<i>Arden of Faversham</i> (anon.)
Sept. 17	Last day to change courses for fall/winter courses
Sept 24, Oct. 1	<i>Edward II</i> (Christopher Marlowe)
Oct. 8, 15, 22	Performances; <i>The Alchemist</i> (Ben Jonson)
October 27-31	Fall break, no classes.
Nov. 5, 12	<i>The Duchess of Malfi</i> (John Webster)
Nov. 12, 19	<i>The Knight of the Burning Pestle</i> (Francis Beaumont)

Nov. 26	Screening of Derek Jarman's <i>Edward II</i>
Dec. 3	Last Day of Class; Term Test
Dec. 5	Final Essay Due (drop box)
Dec. 8	Last Day to Withdraw from Fall Classes

Course Regulations

The mark distribution for the year will be Term Grade: 100%. Class participation marks will include participation in class discussion, response to written comments on graded assignments, consistent attendance, and full reading preparation for each assigned text. The term test will cover material from the entire course. As consistent attendance is expected in this class, students are required to attend an absolute minimum of 60% of the classes; students failing to meet this minimum requirement will be barred from the term test and will receive an automatic failure.

All assignments must be handed in on the date specified unless cleared previously with the professor. Papers must be handed to me in person or to the drop box in the English department office (1812 Dunton Tower) on the due date. If you choose to use the drop box, you must be prepared to incur any late penalties that may accumulate due to the unlikely occurrence of the paper's loss or misfiling.

Late papers will be penalized 2% per day that the assignment is overdue. Papers without medical extension will not be accepted after two weeks of the due date. No faxes or emails of essays will be accepted. Please keep a copy of your assignment in case of loss by any cause. Students can expect to receive graded feedback in a timely manner; the instructor reserves the right to limit commentary on late essays. Students are required to submit all major assignments (essay, presentation, and test) in order to pass the course as a whole.

Class etiquette: Turn off cell phones during class time. Text messaging is not allowed during class.

Grading System:

Assignments in this course will be graded using the letter grading system: A-, A, A+ (Excellent); B-, B, B+ (Good); C-, C, C+ (Satisfactory); D, D+ (Minimal pass); F (Failure). Percentage conversion: A+ (90-100%), A (85-89), A- (80-84), B+ (77-79), B (73-76), B- (70-72), C+ (67-69), C (63-66), C- (60-62), D+ (57-59), D (53-56), D (50-52), F (0-49).

Plagiarism:

Using any source whatsoever without clearly documenting it is a serious academic offense. Consequences include failure on the assignment, failure in the course and possible suspension or expulsion from the university.

Academic regulations and schedules:

Consult the calendar for course information, university and faculty regulations, dates, deadlines and schedules, student, faculty and university rights and responsibilities.

For Student with Disabilities	Contact Paul Menton Centre (6608) to obtain <i>letters of accommodations</i> .
For Religious Observance	To be worked out on individual basis with instructor. Consult Equity Services Website or an Equity Advisor (ext. 5622) for Policy and list of Holy Days (www.carleton.ca/equity)
For Pregnancy	Contact Equity Services (ext. 5622) to obtain <i>letters of accommodation</i> .

Academic Accommodation

You may need special arrangements to meet your academic obligations during the term. For an accommodation request the processes are as follows:

Pregnancy obligation: write to me with any requests for academic accommodation during the first two weeks of class, or as soon as possible after the need for accommodation is known to exist. For more details see the [Student Guide](#).

Religious obligation: write to me with any requests for academic accommodation during the first two weeks of class, or as soon as possible after the need for accommodation is known to exist. For more details see the [Student Guide](#).

Academic Accommodations for Students with Disabilities: The Paul Menton Centre for Students with Disabilities (PMC) provides services to students with Learning Disabilities (LD), psychiatric/mental health disabilities, Attention Deficit Hyperactivity Disorder (ADHD), Autism Spectrum Disorders (ASD), chronic medical conditions, and impairments in mobility, hearing, and vision. If you have a disability requiring academic accommodations in this course, please contact PMC at 613-520-6608 or pmc@carleton.ca for a formal evaluation.

If you are already registered with the PMC, contact your PMC coordinator to send me your Letter of Accommodation at the beginning of the term, and no later than two weeks before the first in-class scheduled test or exam requiring accommodation (if applicable).

After requesting accommodation from PMC, meet with me to ensure accommodation arrangements are made. Please consult the [PMC website](#) for the deadline to request accommodations for the formally-scheduled exam (if applicable).