

SERIN LAB

**INVESTIGATING WAYS
TO ENHANCE
CORRECTIONAL
PRACTICE &
DECISION MAKING**



❖ parole decision making ❖ desistance & re-entry ❖ dynamic risk ❖

Lab

Palatial space with scenic view (6th floor HCI)

Graduate Students

PhD

Dena Derkzen, Renée Gobeil, Laura Hanby, Leslie Helmus, Caleb Lloyd, Marianna Shturman

MA

Angela Smet

Undergraduate Students

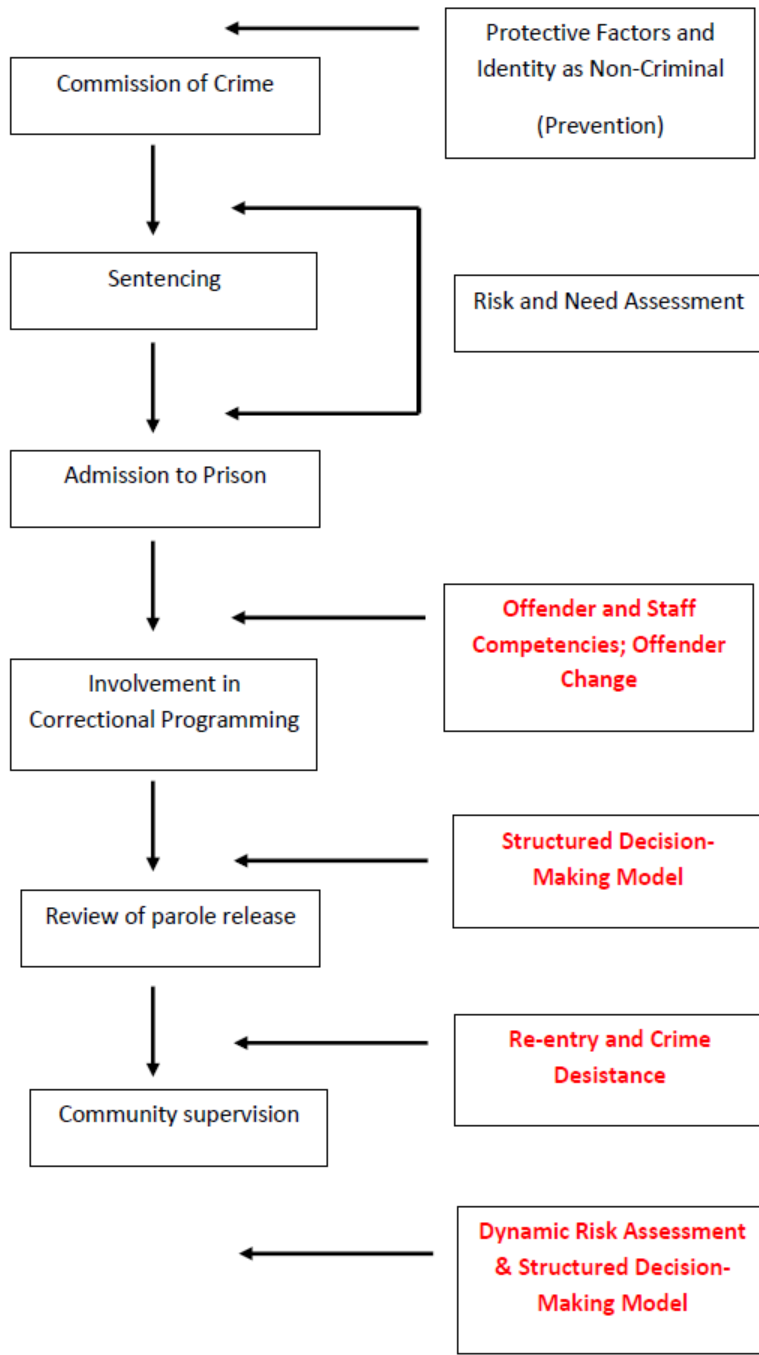
Nick Chadwick, Kathleen Latter, Kristin MacDonald

Volunteer

Kaitlyn Wardrop

Criminal Justice Decision Making Research: More than Risk Assessment!!

Enhancing case-based decisions

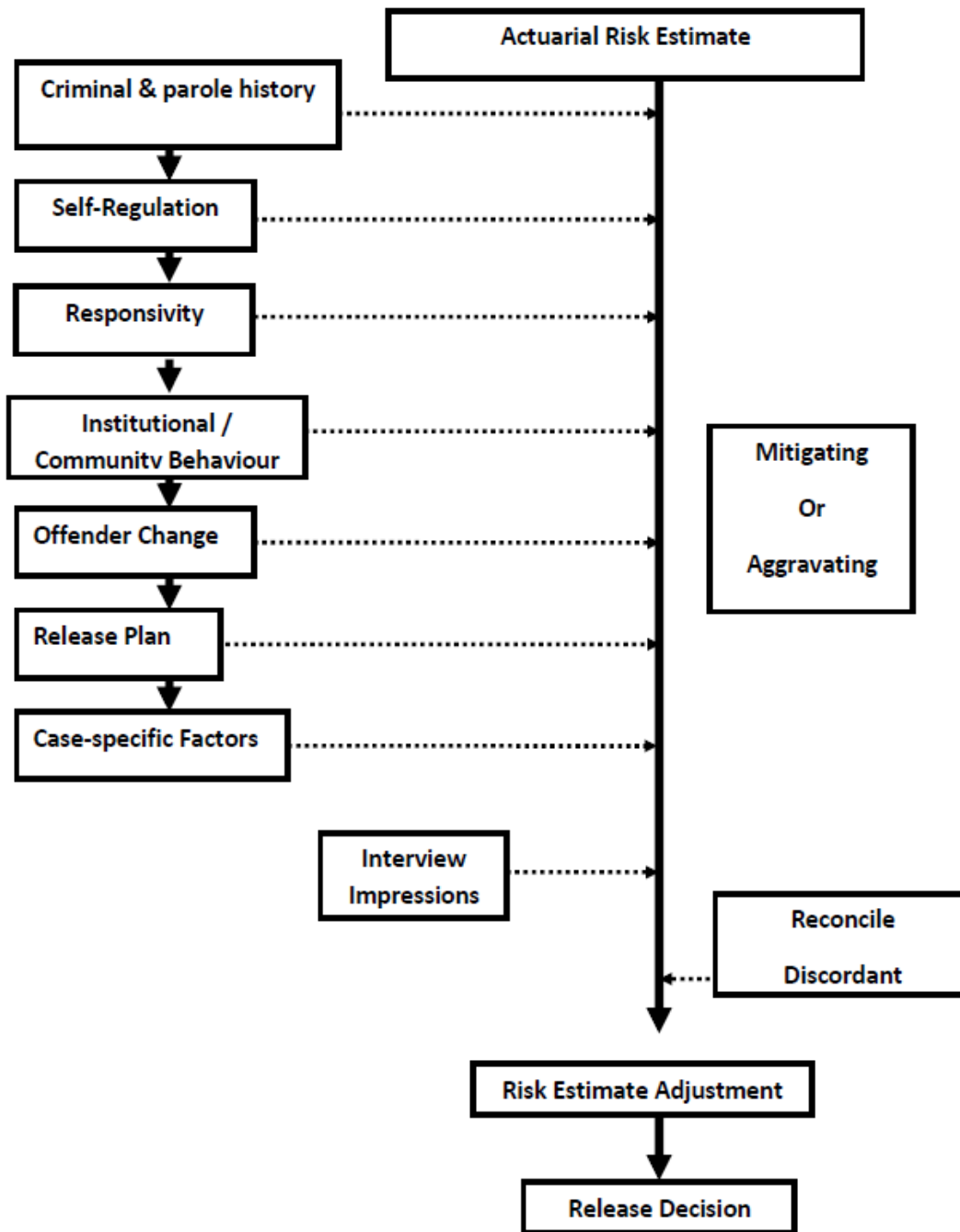


Context

- Background
 - Corrections psychologist & researcher
 - Interest in understanding offender heterogeneity
 - Dabbled in violent and sex offender research (psychopathy, violent offender schema, PVO), treatment readiness
- Current Projects
 - Parole decision making
 - Offender change; re-entry & crime desistance
 - Dynamic risk

Structured Parole Decision Making (due diligence model)

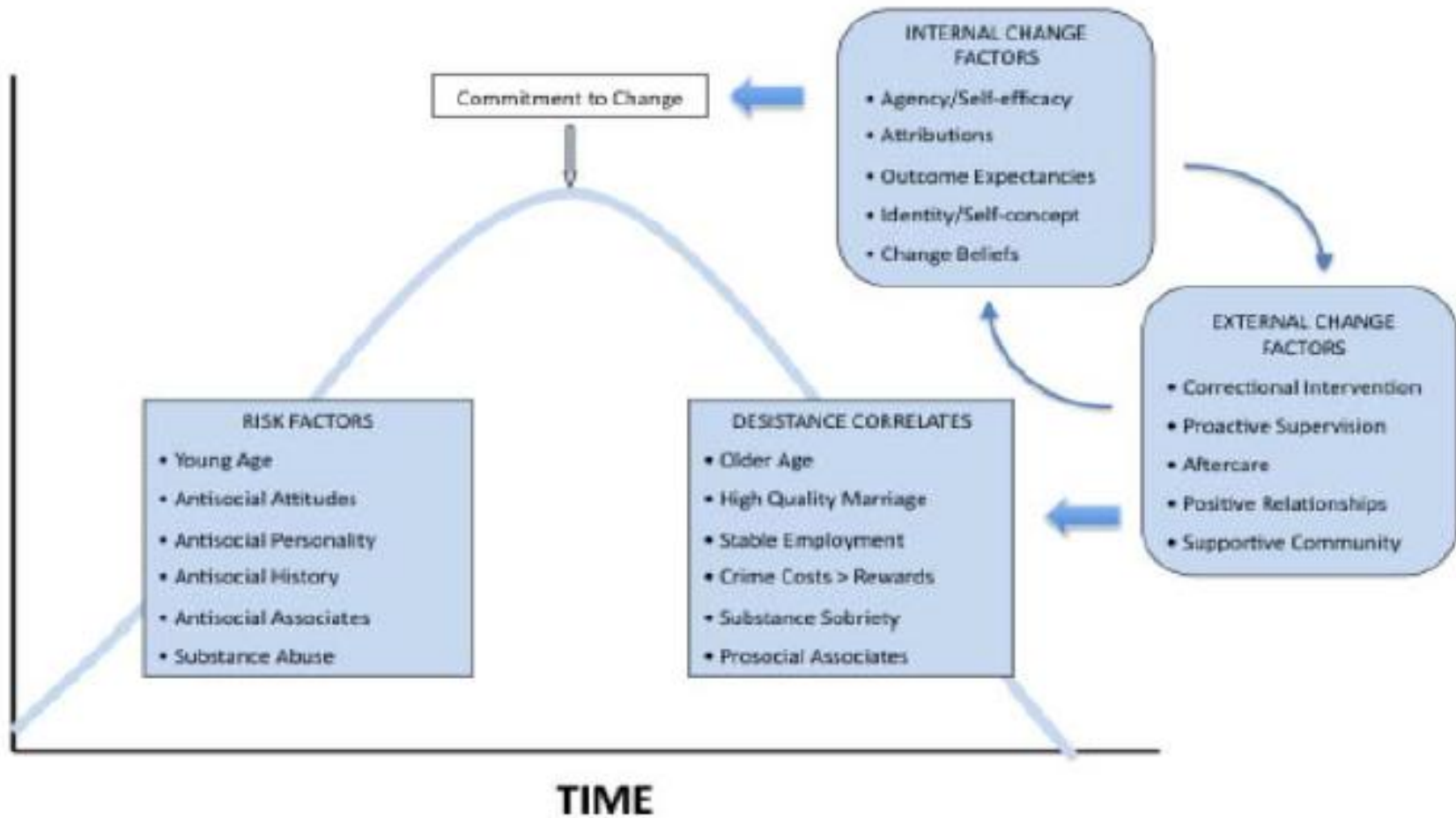
- From 2003 – present with PBC
 - 5 studies, n=225, overall 6 % improvement in accuracy over status quo (1%=\$2.7 million)
 - Review of implementation, e-learning (\$150k)
- Replication research (NIC)
 - Connecticut, Ohio, Kansas (\$30k)
- Quality assurance research (APAI, NIC)
 - Linked to national training and outcome (\$100k)
- Parole conditions (APAI)
- NZ
 - Commissioner report on parole effectiveness (\$16k)
- CSC
 - Induction training, parole officer training & quality assurance

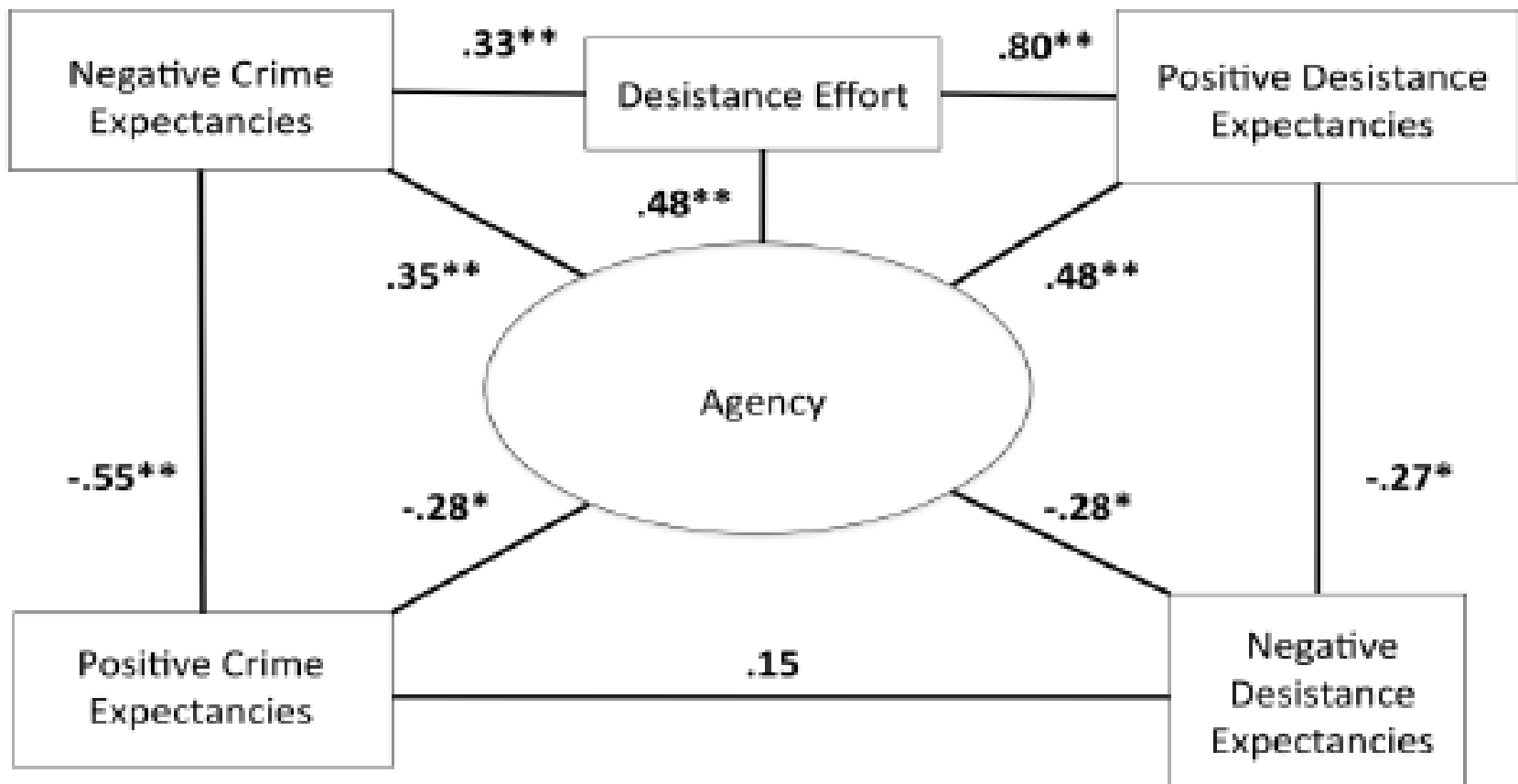


Offender Change, Re-entry & Crime Desistance

- Lack of predictive validity of change measures
 - NIC grant (\$25k)
 - Coding of 2 program databases (undergraduate research)
- Need for re-conceptualization of change to reflect desistance
 - NIJ model (\$50k)
- Competencies
- Training & research
 - BJA (\$750k), NIC (\$200k)
- New measures
 - ICPM; proposed pilots (UK, Federal Probation, Australia)

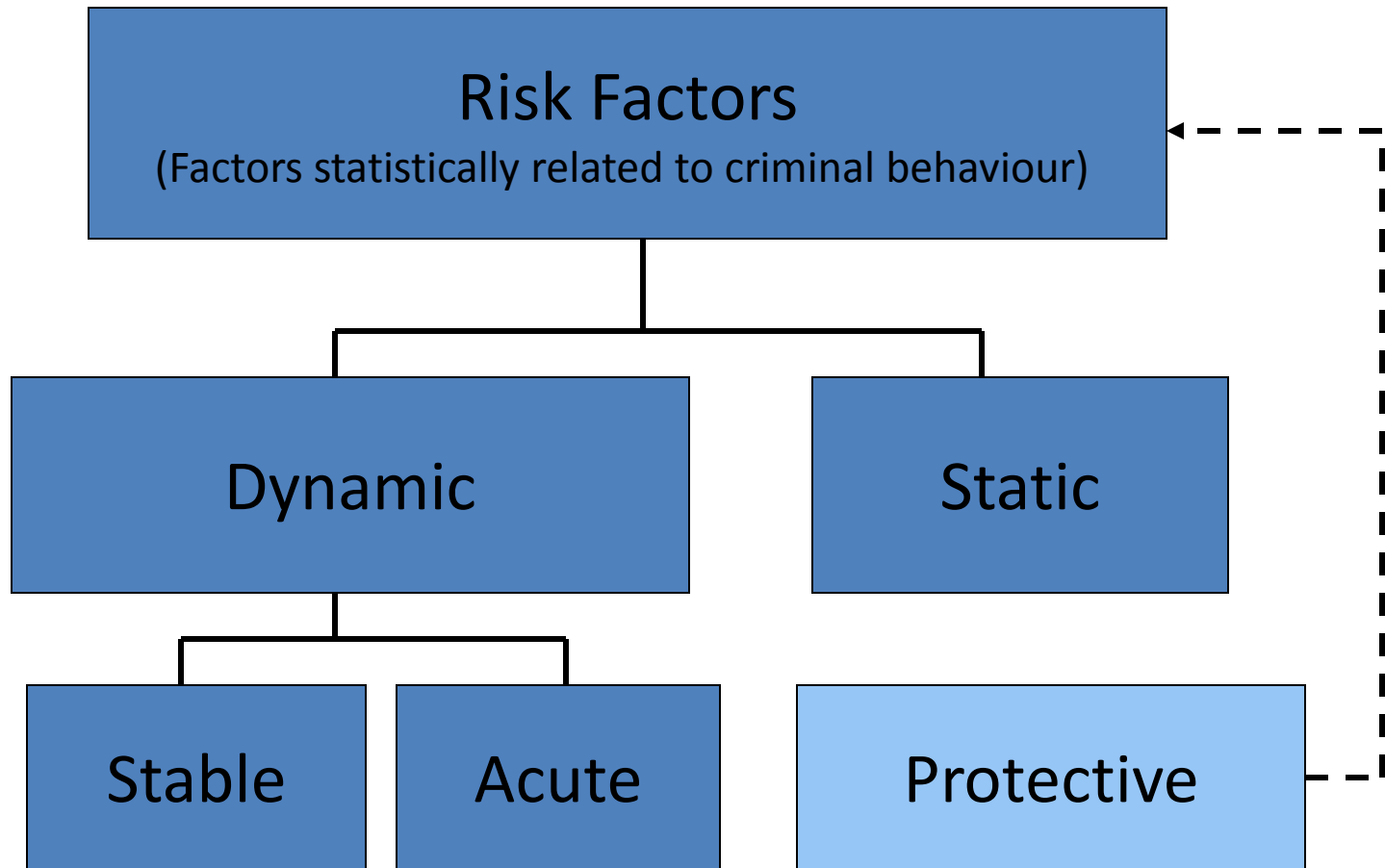
CRIMINAL ACTIVITY





Dynamic Risk

- Evolved from BOI research
- DRAOR (2005) developed
- Formal collaboration
 - NZ (n=5000), Ohio (n=1400), Albania
- Proposed collaboration
 - Federal Probation, UK, Scotland, Australia



Dynamic Risk Assessment for Offender Reentry

STABLE	ACUTE	PROTECTIVE
Peer associations	Substance abuse	Responsive to advice
Attitudes towards authority	Anger/Hostility	Prosocial identity
Self-regulation	Opportunity/Access to victims	High expectations
Problem solving	Negative Mood	Costs/Benefits
Sense of entitlement	Employment	Social support
Attachment with others	Interpersonal Relationships	Social control
	Living situation	

Preliminary Findings

- All domains incrementally predictive relative to static risk instrument; AUC greater than .70
- Protective factors have greatest predictive validity (requires replication; confirms desistance model)
- Testimonials from POs; implemented as policy in NZ & Iowa
- NIJ grant application forthcoming (multi-site, multi-agency)

Observation

- Likely will not get a Psychology Bulletin publication
- Blessed with great students and colleagues
- Our work has transformed and enhanced correctional practice in several agencies in multiple countries and is poised to continue this contribution

Summary

- Expectations of me
 - Some financial support; access to key international colleagues
- Expectations of students
 - Independent workers, passionate, can decipher my musings
- Model of research
 - collaboration with agencies to collect data
- Long-term interests
 - Pathways to desistance (offender change, PO's as agents of chance, dynamic risk)

Sample of Papers

- Gobeil, R. & Serin, R.C. (2010). Parole Decision-Making: Contributions from Research. In J. Brown and E. Campbell's *Cambridge Handbook of Forensic Psychology*, pp. 251-258. Cambridge University Press.
- Lloyd, Caleb and Ralph Serin. 2011. Agency and outcome expectancies for crime desistance: Measuring offenders' personal beliefs about change. *Psychology, Crime & Law*, in press.
- Serin, R.C., Gobeil, R., Hanby, L.J. & Lloyd, C.D. (in press). Evidence-Based Practice in corrections: Entry points for improvement in case-based decisions. *Corrections Today*.
- Serin, R.C., Kennedy, S.M., Mailloux, D.L, Hanby, L.J. (2010). The Origins of Treatment Readiness. In *Transition to Better Lives*, Andrew Day, Sharon Casey, Tony Ward, Kevin Howells, & Jim Vess (Eds), pp. 12-26. Willan Publishing.
- Serin, R.C., Lloyd, C.D., & Hanby, L.J. (2010). Enhancing offender re-entry: An integrated model for enhancing offender re-entry. *European Journal of Probation*, 2 (2), 53-75.
- Serin, R. C., & Lloyd, C. D. (2009) Examining the process of offender change: The transition to crime desistance' *Psychology, Crime, & Law*, 15, pp. 347-364.
- Serin, R.C. and Shturman, M. (2007). Correctional Staff's Important Contribution to Effective Corrections. *Corrections Today*, 5.