

Graduate Programs

Department of Geography and Environmental Studies

Carleton University



Why a graduate degree?

Why Geography?

- More job opportunities available to those with a graduate degree
- Awesome experience doing fieldwork
- Small classes
- Opportunity to work with a group of your peers in an exciting academic environment
- Work with experts conducting cutting edge research

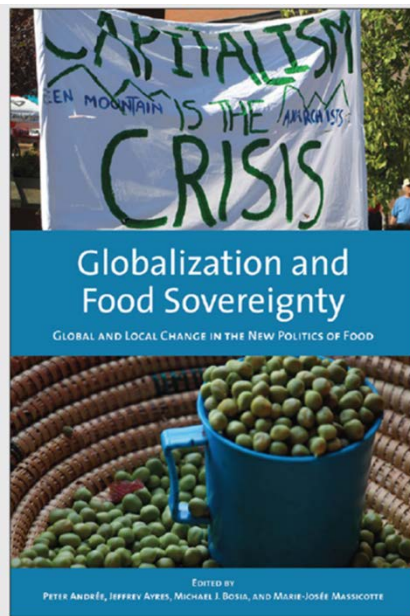
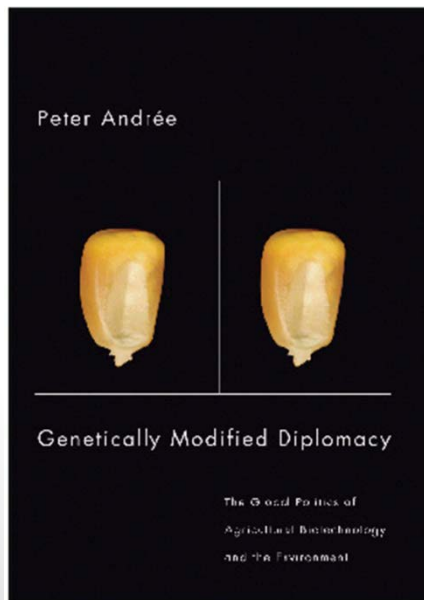
DGES Professors' Research Interests

- The following is a collection of some of the projects that our professors are currently working on with their graduate students
- Email the profs directly (contact info on each page) to discuss research ideas for graduate work

Peter Andrée (DGES + Political Science)

Peter.Andree@Carleton.ca

- Environmental politics and policy
- Political economy of agri-food systems
- Impacts of community-based and participatory research models



Patricia Ballamingie

patricia_ballamingie@carleton.ca

- Environmental conflict & democracy
 - First Nations & environmental justice
- Sustainable community & localizing food systems
 - Urban agriculture & resilience
- Engaged scholarship
 - Community-university partnerships



Mike Brklacich

michael_brklacich@carleton.ca

- Human dimension of global environmental change (GEC)
 - Social vulnerability and human security
 - Food security
- Community responses to multiple stresses
 - Capacity of Canada's rural communities to adapt to uncertain futures
 - Southern Africa vulnerability initiative



Chris Burn

christopher_burn@carleton.ca

- Permafrost studies in the Yukon and western Arctic



Installation of ground temperature cable, Herschel Island



Ice-wedge polygons in Old Crow Flats



Ground ice near Mayo, YT

Emilie Cameron

emilie_cameron@carleton.ca

- Critical northern geographies
- Geographies of resource extraction, empire, and labour
- Race, nature, and environmental knowledge
- Geographies of Indigenous/non-Indigenous relations, colonialism, and Indigenous self-determination
- Feminist, poststructuralist, postcolonial, anti-racist, and political economic theories and approaches



"Road to the Mine" by Jimmy Kamimallik, 2009



Stephan Gruber

stephan.gruber@carleton.ca

Research interests and research areas for these:

- Permafrost, mountain environments, climate change impacts
- Measurement, computer simulation, sensitivity & uncertainty



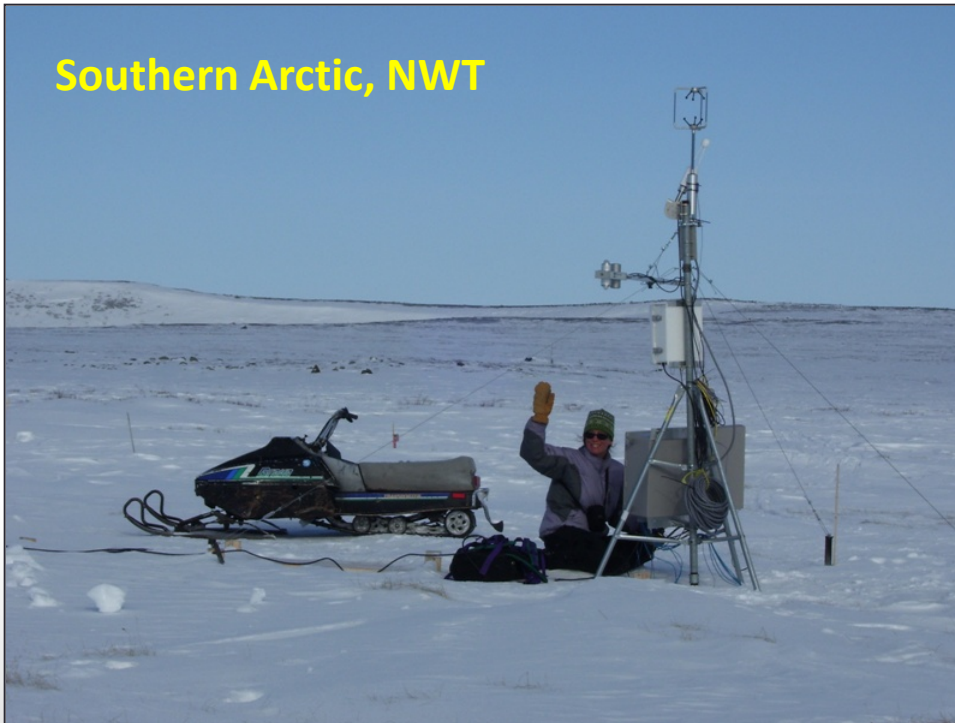
Elyn Humphreys

elyn_humphreys@carleton.ca

- Soil-plant-atmosphere interactions
- Micrometeorological measurements of trace gas exchange
- Leaf-level studies



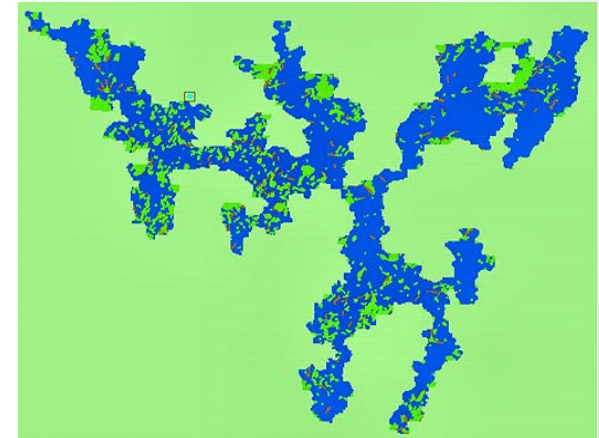
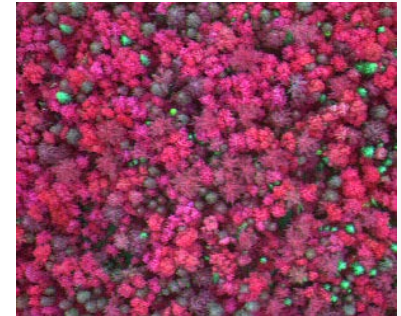
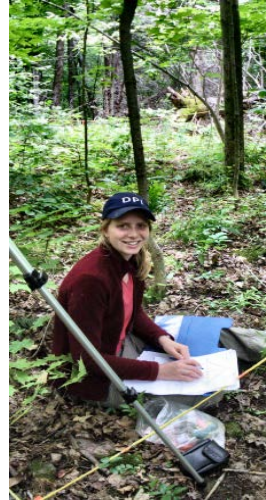
**Mer Bleue bog,
Ottawa ON**



Doug King

doug_king@carleton.ca

- Remote sensing and GIS of forests and wetlands
- Mapping vegetation structure, composition and health
- Habitat mapping



Fran Klodawsky

fran_klodawsky@carleton.ca

- Critical social geography
 - Research to end homelessness
 - Inclusive cities in Canada and internationally
- University-community research collaborations
- Urban and neighbourhood scale research



Gita Ljubicic

gita_ljubicic@carleton.ca

- Relationships between Inuit language, knowledge, and use of northern environments
- Sea ice and marine environments
- Cross-cultural, collaborative research methods
- Linking Inuit and scientific knowledge in a complementary manner
- Northern content and contributions in education materials and programs



Pablo Mendez

pablo_mendez@carleton.ca

The globalization of the homeownership ideal: comparing how mortgaged homeownership is valorized and unevenly enabled in different parts of the world.

The financialization of international development: interrogating the idea of credit-based asset building as a strategy for combatting poverty and inequality.

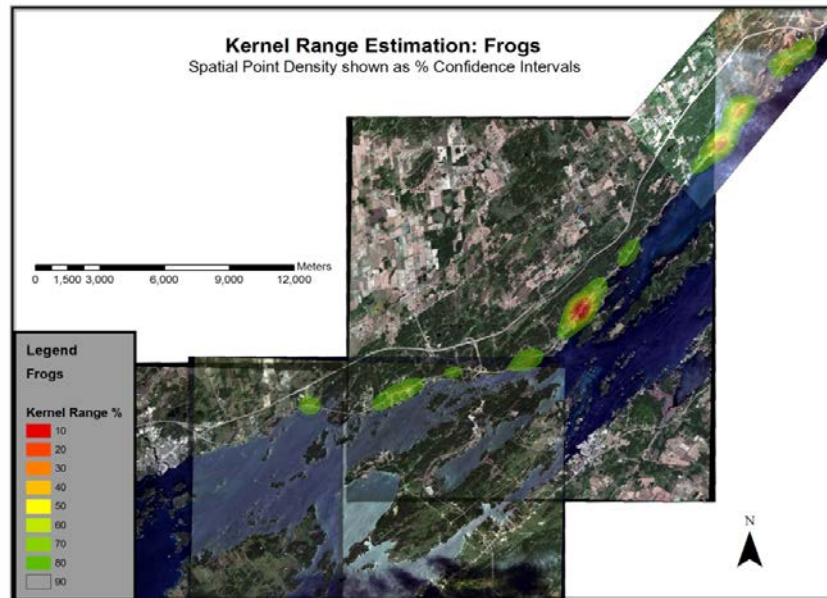
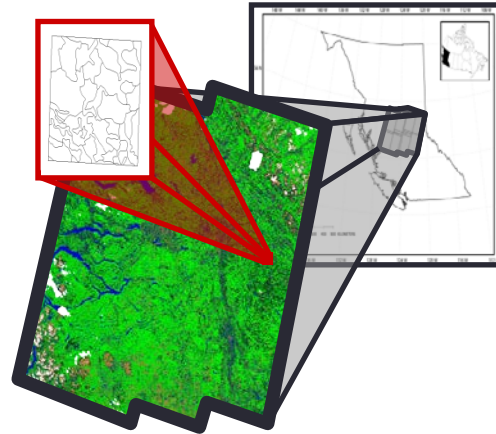
Geographies of debt and indebtedness: investigating the inter-scalar role of financial and non-financial forms of debt in the production of space.



Scott Mitchell

scott_mitchell@carleton.ca

- Spatial pattern and ecosystem processes
 - Biodiversity and productivity
 - Anthropogenic impacts
 - Uncertainty of land cover maps
 - GIS & landscape models



Paul Mkandawire

Paul_Mkandawire@carleton.ca

- Social and environmental determinants of health
- Political ecology of health
- Urban environments and health
- Global public health policy
- Science policy: role of science in environment and health policy
- Health care systems and health care finance programs



Derek Mueller

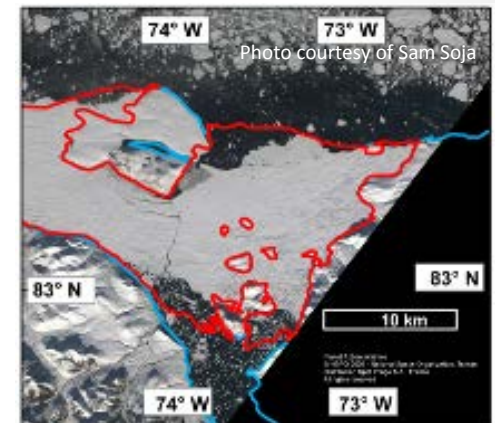
derek_mueller@carleton.ca



- Glaciology of ice shelves and other thick coastal ice in the Canadian High Arctic
- Remote sensing to detect and evaluate cryospheric change
- Impacts of Arctic climate change



Photo courtesy of D. Stern



Jennifer Ridgley

jennifer.ridgley@carleton.ca



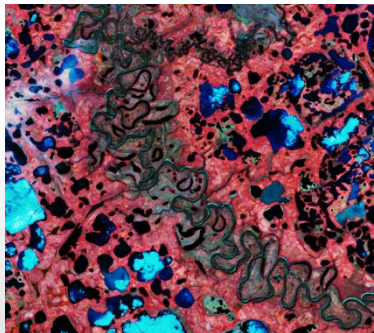
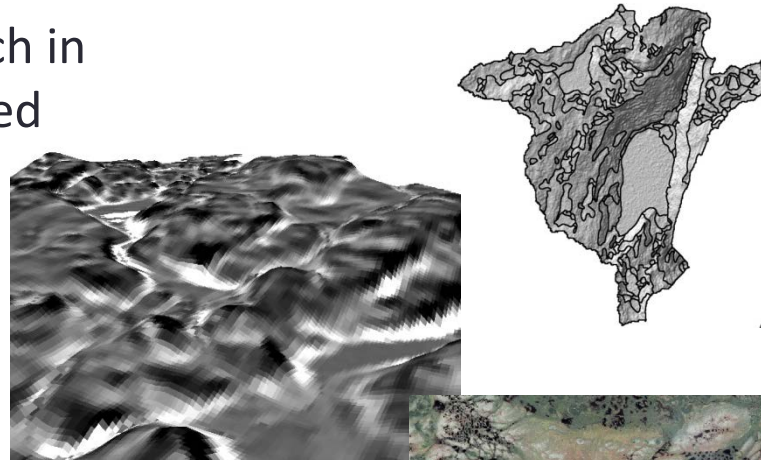
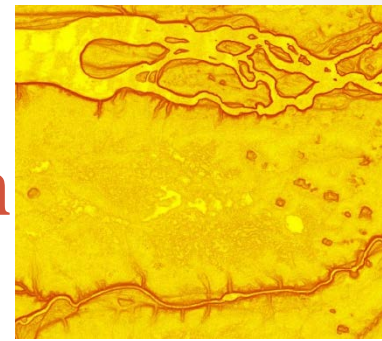
- Critical labour, political, and legal geographies of the city
- Citizenship, border security, and migration management
- Local immigration politics, including sanctuary policies, anti-deportation campaigns, and movements for refugee rights
- Urban policing and law enforcement



Murray Richardson

murray_richardson@carleton.ca

- Landform mapping with remote sensing and digital terrain analysis
- Hydrology and water-quality research in boreal regions (field and model-based approaches)
- Light Detection and Ranging (LiDAR) applications in hydrology and the biogeosciences



Blair Rutherford

blair_rutherford@carleton.ca

- cultural politics of land, labour and belonging
- farm labour and the agrarian question in Zimbabwe and sub-Saharan Africa
- undocumented migrants, citizenship and livelihoods in South Africa
- ethnographic research in a postcolonial world



Derek Smith

dereka_smith@carleton.ca

- Mapping indigenous territories and natural resource use in rain forest regions of Central America and Mexico
- Traditional Geographic knowledge
- Cultural Landscapes of the Yucatan Peninsula

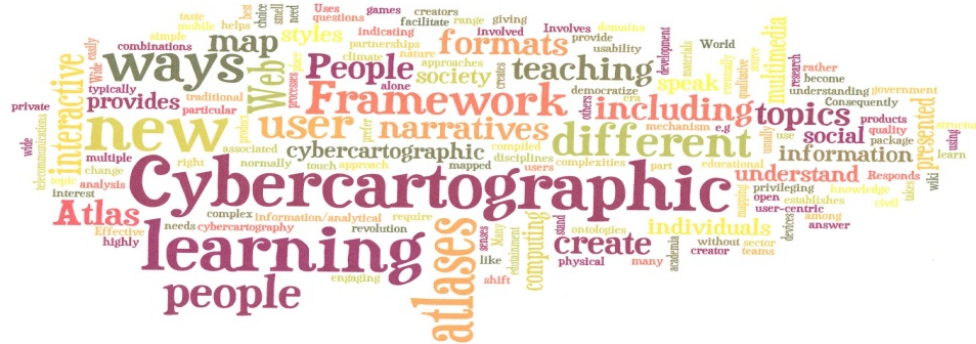


Adult paca (*Agouti paca*).

Fraser Taylor

fraser_taylor@carleton.ca

- The application of geographic information processing to the analysis of topics of interest to society in a national and international context and the display of the results using multimedia and multi-sensory cartography
- The creation of cybercartographic atlases with northern and aboriginal communities
- Indigenous and local knowledge
- Regional and Rural Development in developing nations
- Geographic information management and "Crowd sourcing"



Jill Wigle

jill_wigle@carleton.ca

- Informal housing and human settlement planning in cities of the global south
- Environmental and social dimensions of urbanization in Latin America
- Urban planning and community activism
- Mexico City



Theresa Wong

theresa_wong@carleton.ca

- Politics and discourses of development: power/knowledge, social movements
- Postcolonial geographies
- Nature-society relations
- East and Southeast Asia



Some Recent MA Theses

- *Neighbourhoods Matter: Examining Neighbourhood Significance through the Eyes of Women Who Live in Supportive Housing*
- *The Place of Food: Constructing a sense of place among new urban-oriented farmers in rural communities in Southern Ontario*
- *Contested Discourses of Sustainability in Old Ottawa South*
- *Access to Cochlear Implant Technology: A structurationist approach*

Some Recent MSc Theses

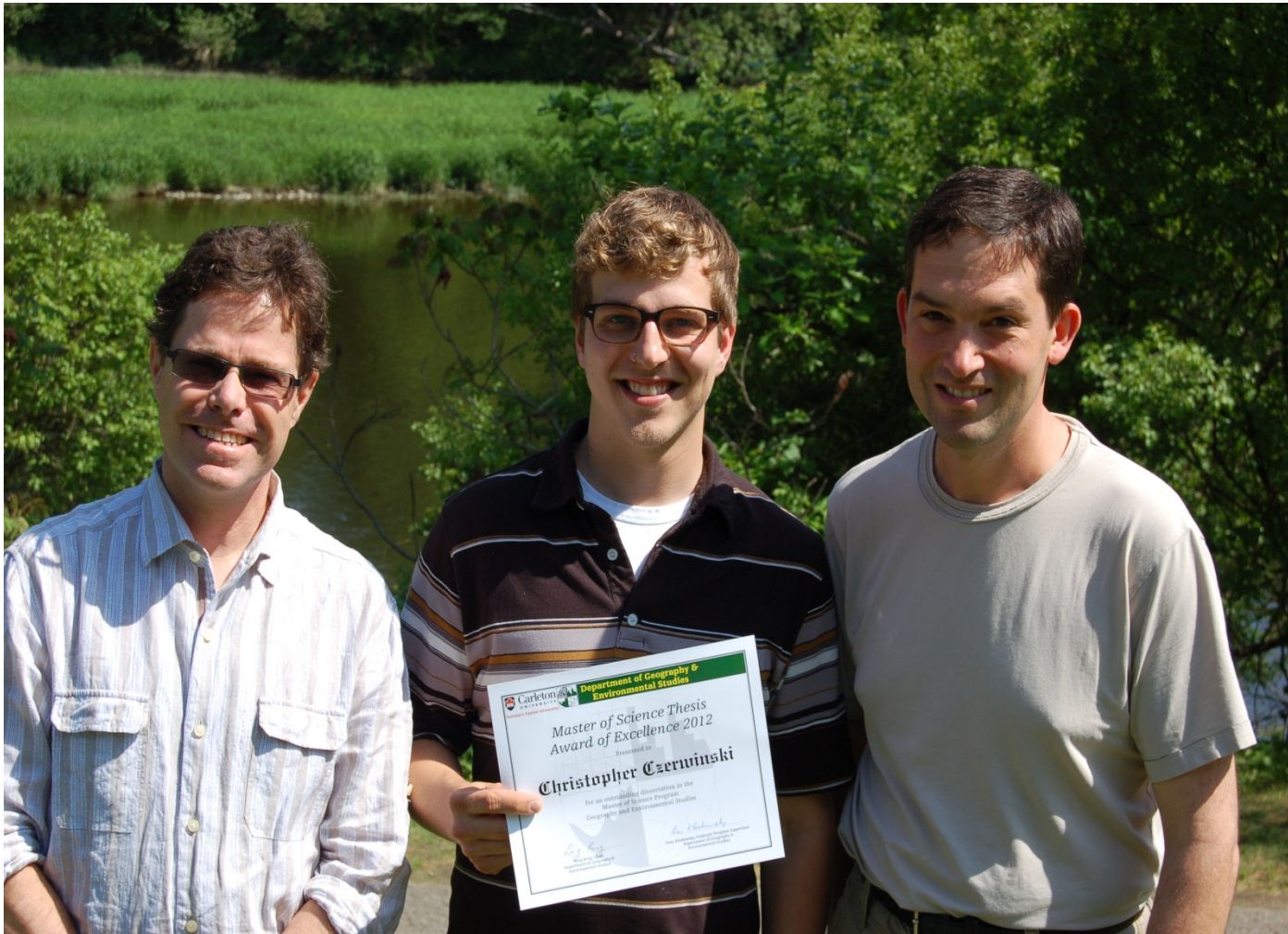
- *The Development of near-surface ground ice at Illisarvik, Richards Island, Northwest Territories*
- *Snow Surface Energy Exchanges and Snowmelt in a Shrub-Covered Bog in Eastern Ontario, Canada*
- *Assessing the growing season carbon budget of an Arctic Sedge fen*
- *Evaluation of three semi-empirical soil moisture estimation models with RADARSAT-2 imagery*
- *Multivariate forest modelling and mapping using Quickbird imagery and topographic data in Chelsea, Québec*

Sarah Banks, recipient of DGES Masters Thesis Award of Excellence 2013



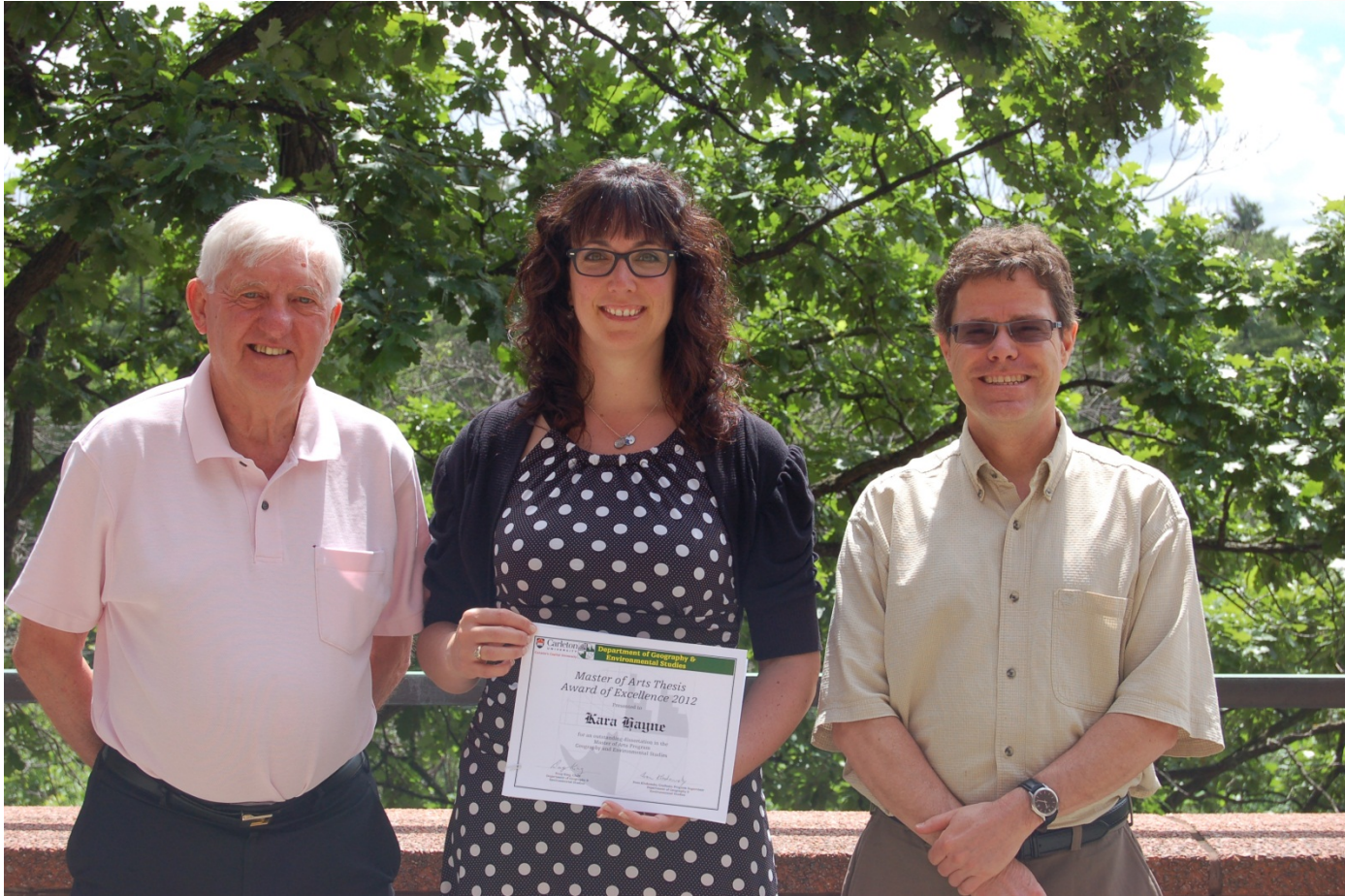
DGES Chair, Doug King with Sarah Banks

Chris Czerwinski, recipient of DGES Masters Thesis Award of Excellence 2013



L-r, Doug King (DGES chair), Chris Czerwinski, Scott Mitchell (co-supervisor)

Kara Hayne, recipient of DGES Masters Thesis Award of Excellence 2013



L-r Fraser Taylor (thesis supervisor,) Kara Hayne, Doug King (DGES chair)