

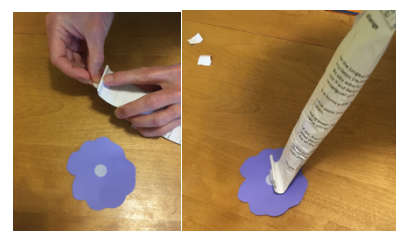
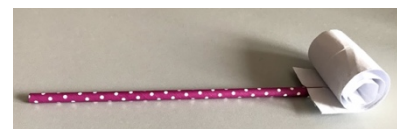
## Eat like a butterfly

### What you need?

- ½ sheet of 8.5 x 11 inch paper cut lengthwise (a scrap piece of paper works)
- 1 paper straw (or a piece of paper rolled up like a straw and taped)
- 1 small piece (e.g. 1 cm x 1 cm) of soft Velcro and one small piece of rough Velcro
- ¼ sheet of paper to draw a flower
- 1 rubber band
- Tools: scissors, tape

### What to do to make your proboscis

1. Take the half sheet of paper and fold the two sides towards the middle of the paper.
2. Put a piece of tape down the middle to hold the folded parts down as in the photo.
3. Fold about a half a centimetre of the paper at one end and tape it down as in the photo.
4. From the end that is folded and taped, roll the paper tightly all the way to the other end to create a cylinder and wrap a rubber band around it as in the photo.
5. You need to let the cylinder of paper sit for a few hours in the rubber band.
6. After letting it sit, remove the rubber band. Insert about 1-2 cm of the straw into the opening at the end of the roll of paper and tape it in place.
7. Tape along the rest of the open end so it is closed. This is your proboscis.
8. Gently unroll your proboscis and put one piece of Velcro at the end away from the straw, on the bottom side.
9. Draw and cut out a flower from the ¼ sheet of paper.
10. Remove the backing from the piece of Velcro and stick it to the middle of your flower (this is pretend nectar).
11. Blow into your proboscis and try to collect nectar by having the Velcro on the proboscis stick to the Velcro on the flower.



### What's happening?

Butterflies do not bite or chew to eat. They have a special mouth part called a “proboscis”. The proboscis is a long tube-like structure that unrolls when the butterfly eats. It allows the butterfly to get deep into a flower where the nectar (a liquid sugary food) is stored. The butterfly sucks up the nectar similar to how we use a straw. Your blower is your proboscis and the nectar is the Velcro in the centre of the paper flower you made. Now you are ‘eating’ like a butterfly.

**Cool fact:** When butterflies come out of (emerge from) the pupa or chrysalis, their proboscis is in two pieces that the butterfly has to put together before it can eat.