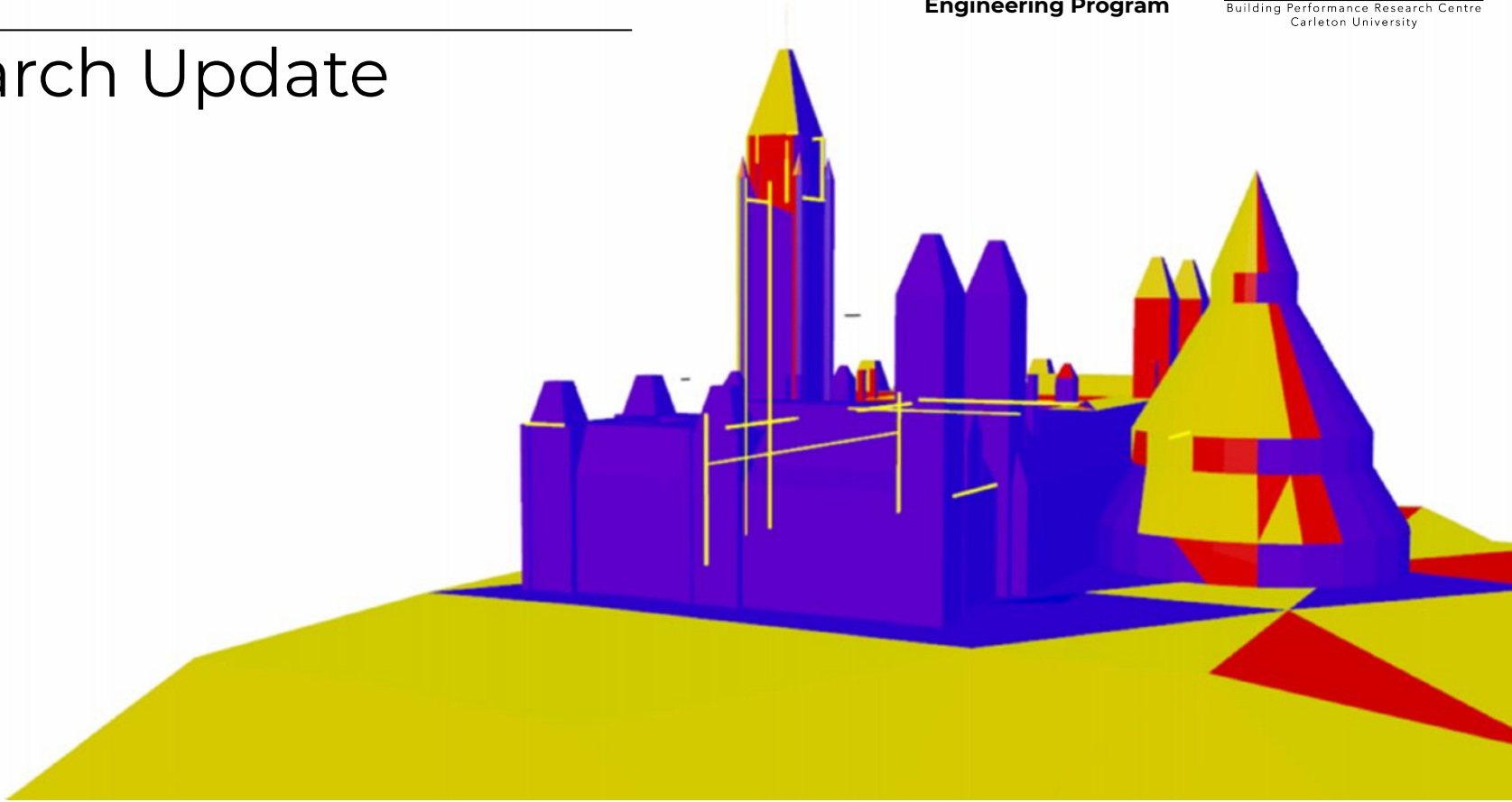
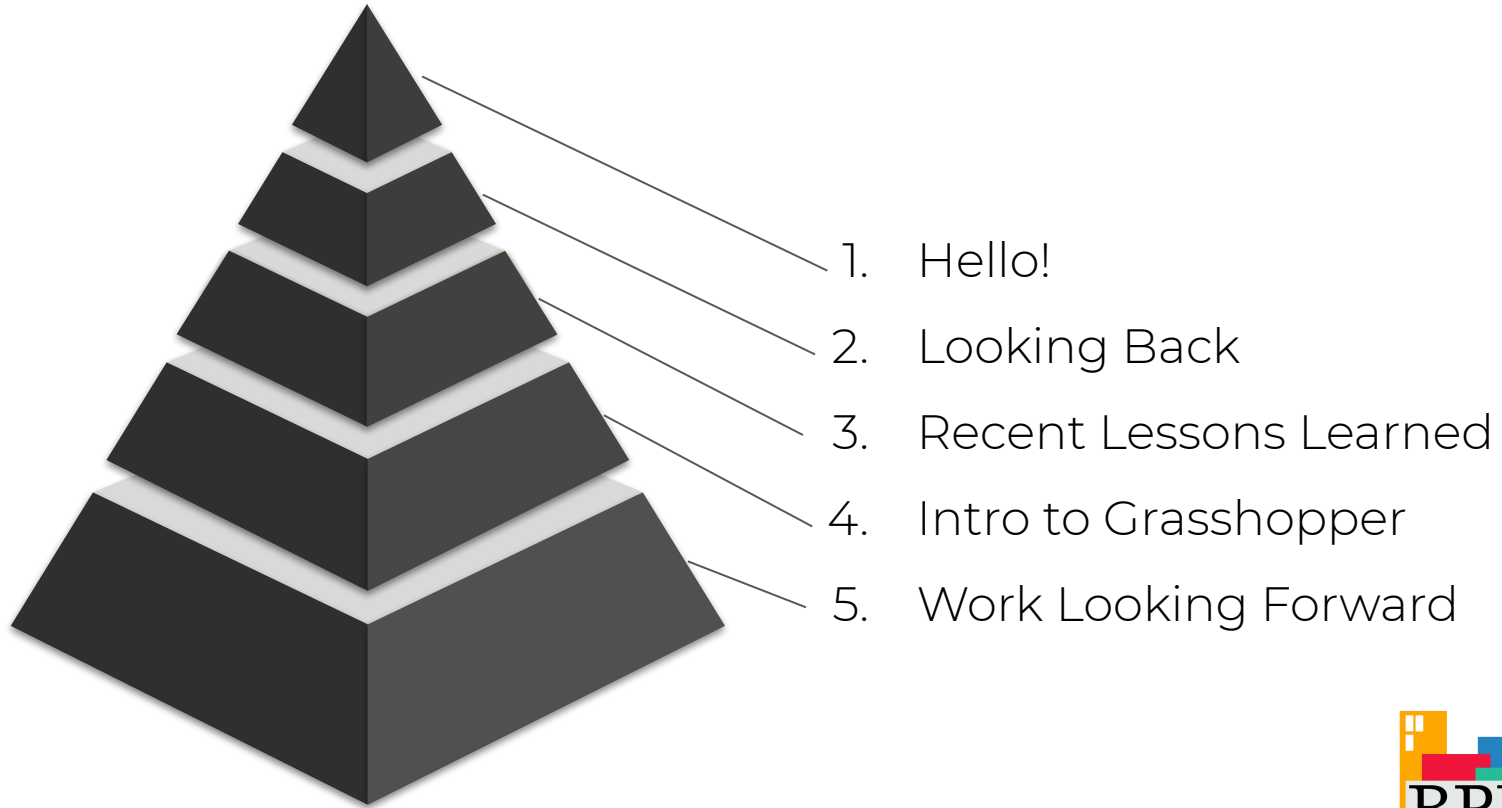


Research Update



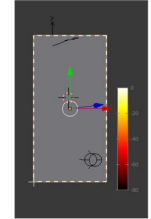
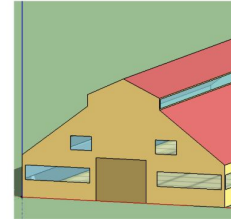
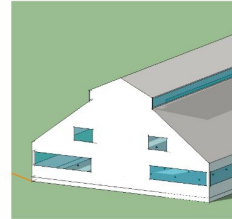
Overview



What Have I been Up To?

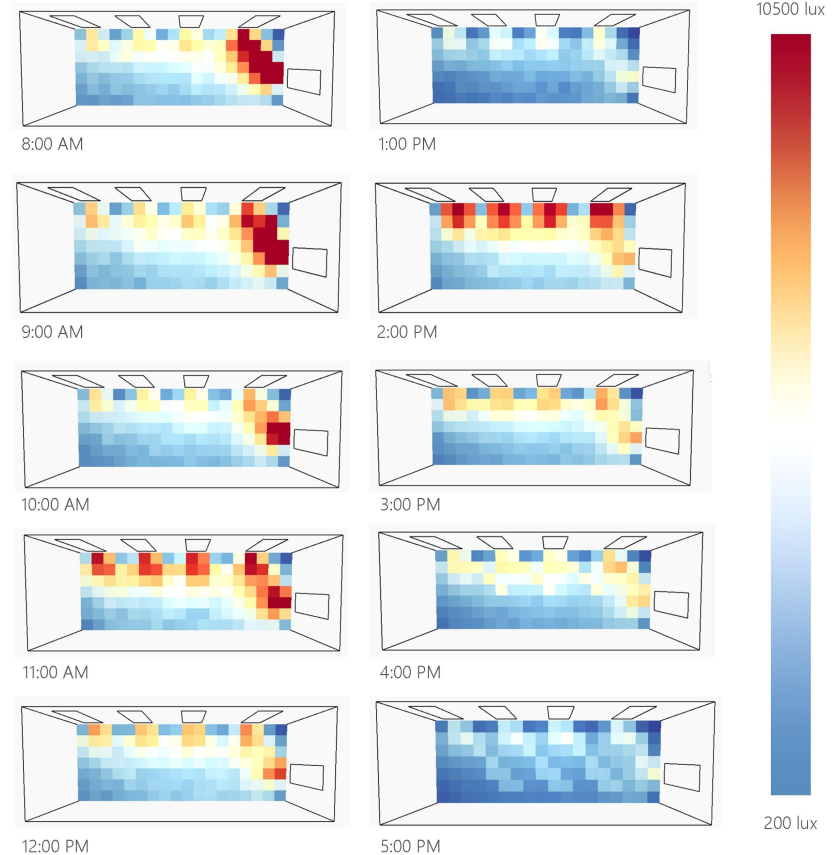
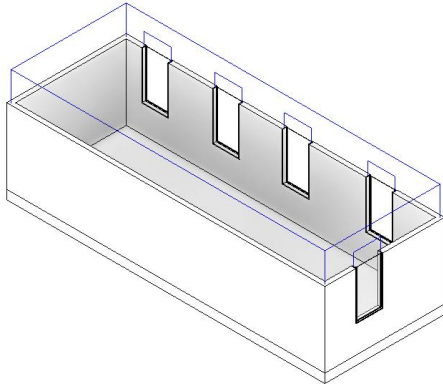
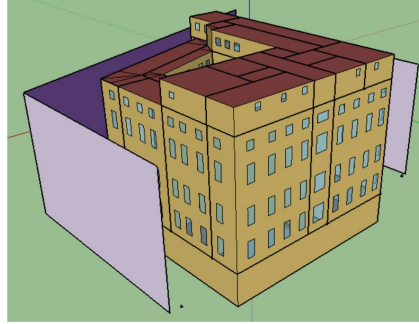


Carleton Heritage Conservation Symposium
April 27th 2019



What Have I been Up To?

IBPSA Rome 2019 Student Modeling Competition

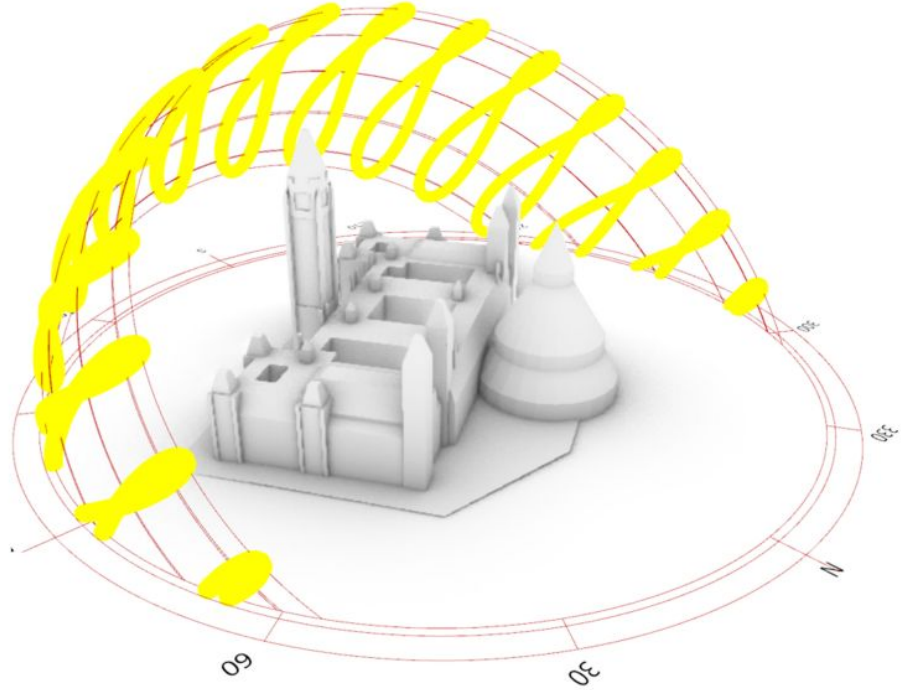
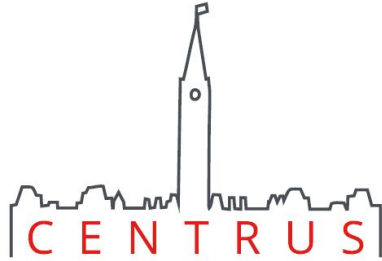


What Have I been Up To?

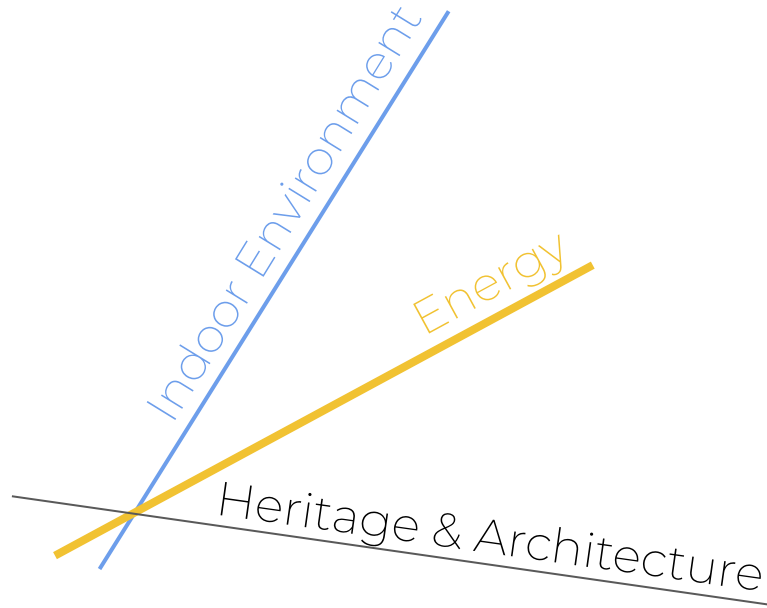
Mexico DSA 2019



What Have I been Up To?



Looking Back : Research Objectives

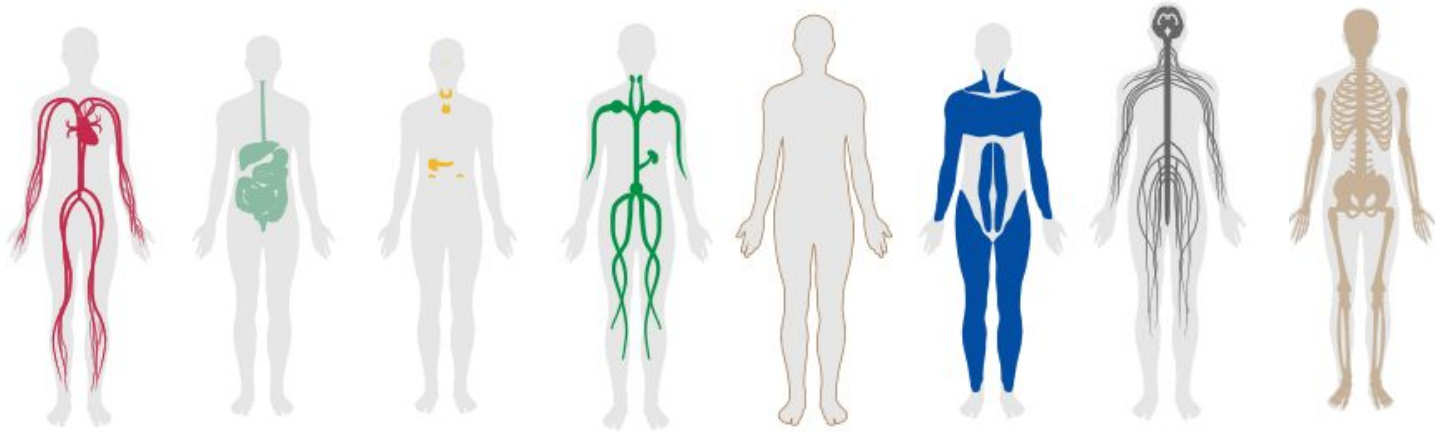


Develop tools and methodology to better incorporate existing/historical building **performance** aspects into the decision making process for retrofits by means of **generative design**

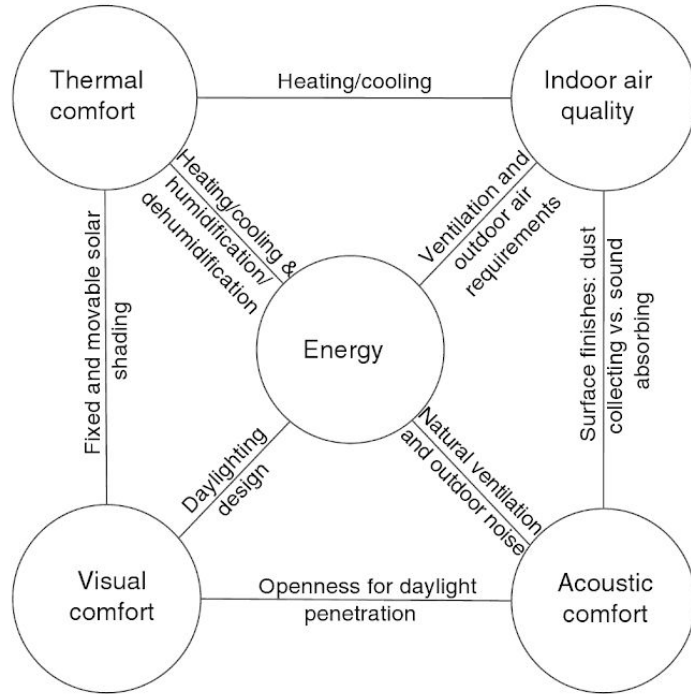
Looking Back : Indoor Environmental Quality

People spend up to 95% of their time indoors

Designers should keep the best interest of the public in mind



Looking Back : Building Energy



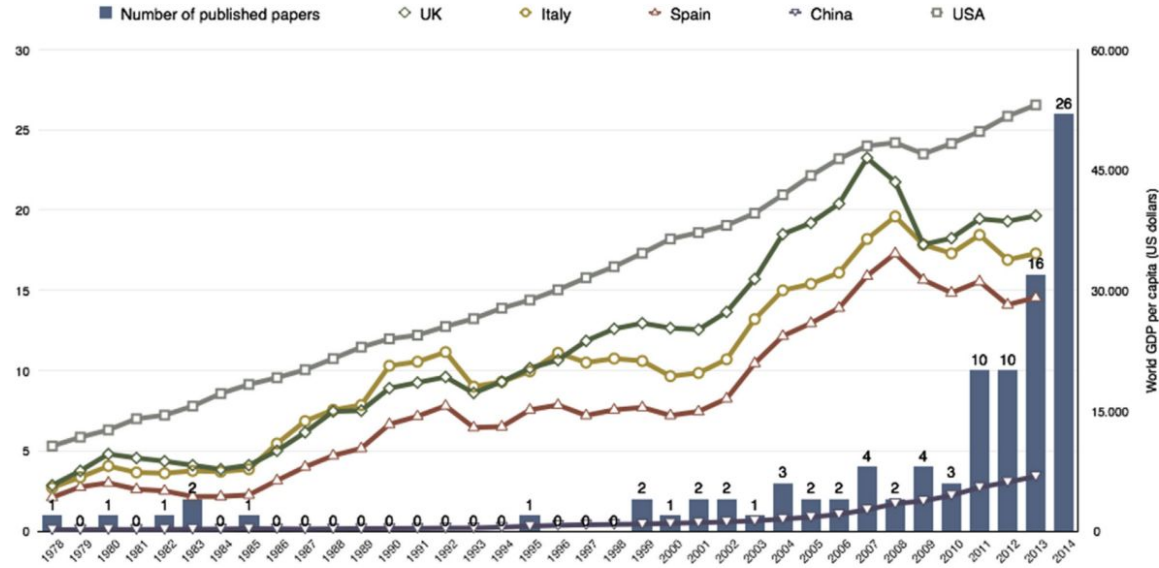
Buildings are responsible for 30 - 45% of the global energy usage via systems that support:

- Heating
- Ventilation
- Lighting
- Appliances
- Electronics
- Hot Water





Looking Back : Heritage and Existing Buildings

Heritage buildings comprise of 10 - 15% of the building stock

The rate of replacement for existing buildings is only 1 – 3% annually

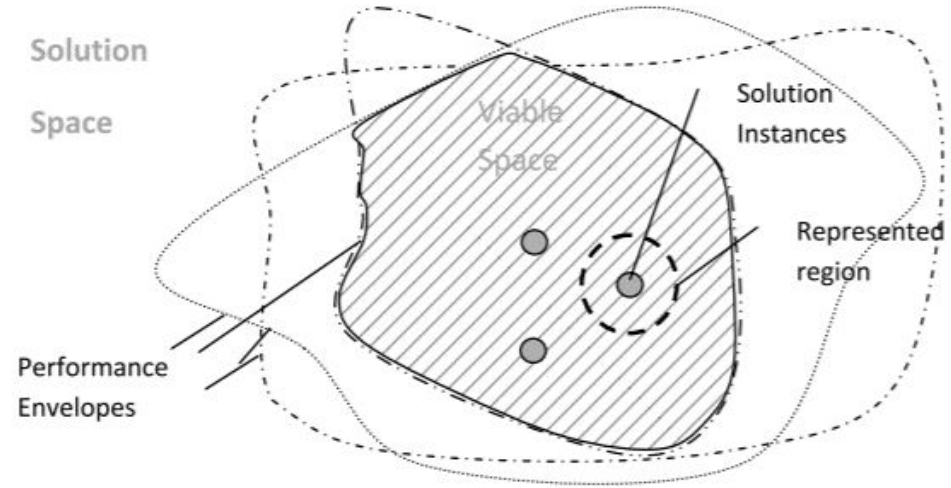


A. Martínez-Molina, I. Tort-Ausina, S. Cho, and J. L. Vivancos, "Energy efficiency and thermal comfort in historic buildings: A review," *Renew. Sustain. Energy Rev.*, vol. 61, pp. 70–85, 2016.

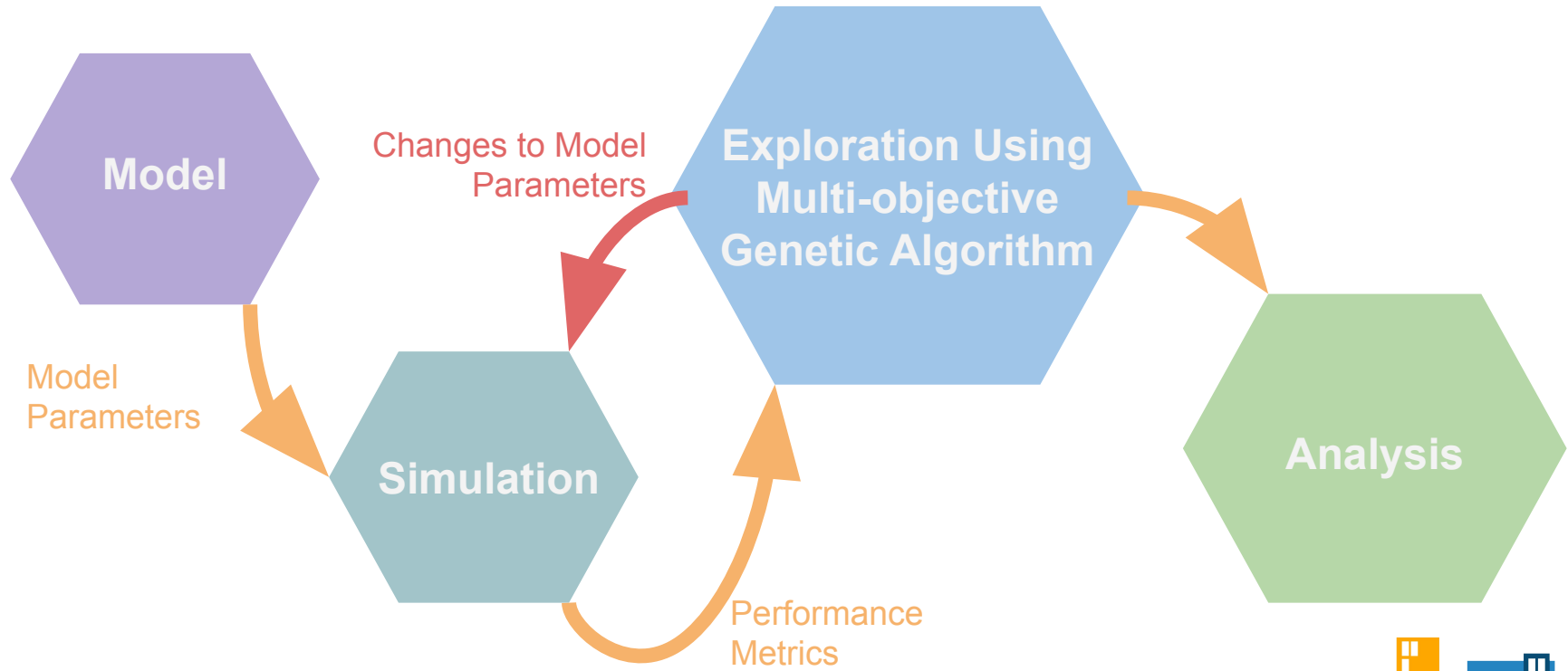
IEQ Category	Metric Name
 <p>LIGHT</p>	<ul style="list-style-type: none"> · Average light intensity · Work surface lighting intensity · View access distance · Spatial daylight autonomy · Annual sunlight exposure · Useful Daylight Illuminance
<p>Acoustic</p>  <p>COMFORT</p>	<ul style="list-style-type: none"> · Exterior Noise Intrusion · Perceived Noise Criteria · Reverberation Time · Sound Transmission Class · Speech Transmission Index
 <p>AIR</p>	<ul style="list-style-type: none"> · Formaldehyde · TVOC · CO · PM_{2.5} · PM₁₀ · Ozone · Radon · CO₂ · RH · Odor
 <p>COMFORT</p>	<ul style="list-style-type: none"> · Predicted Mean Vote · Predicted Percent Satisfied

Looking Back : What is Generative Design?

- More than parametric analysis
- Uses evolutionary optimization algorithms
- Compromise Oriented
 - Not intended to find single “Most Optimal” solution
- **Design options must be formatted for stakeholder evaluation**



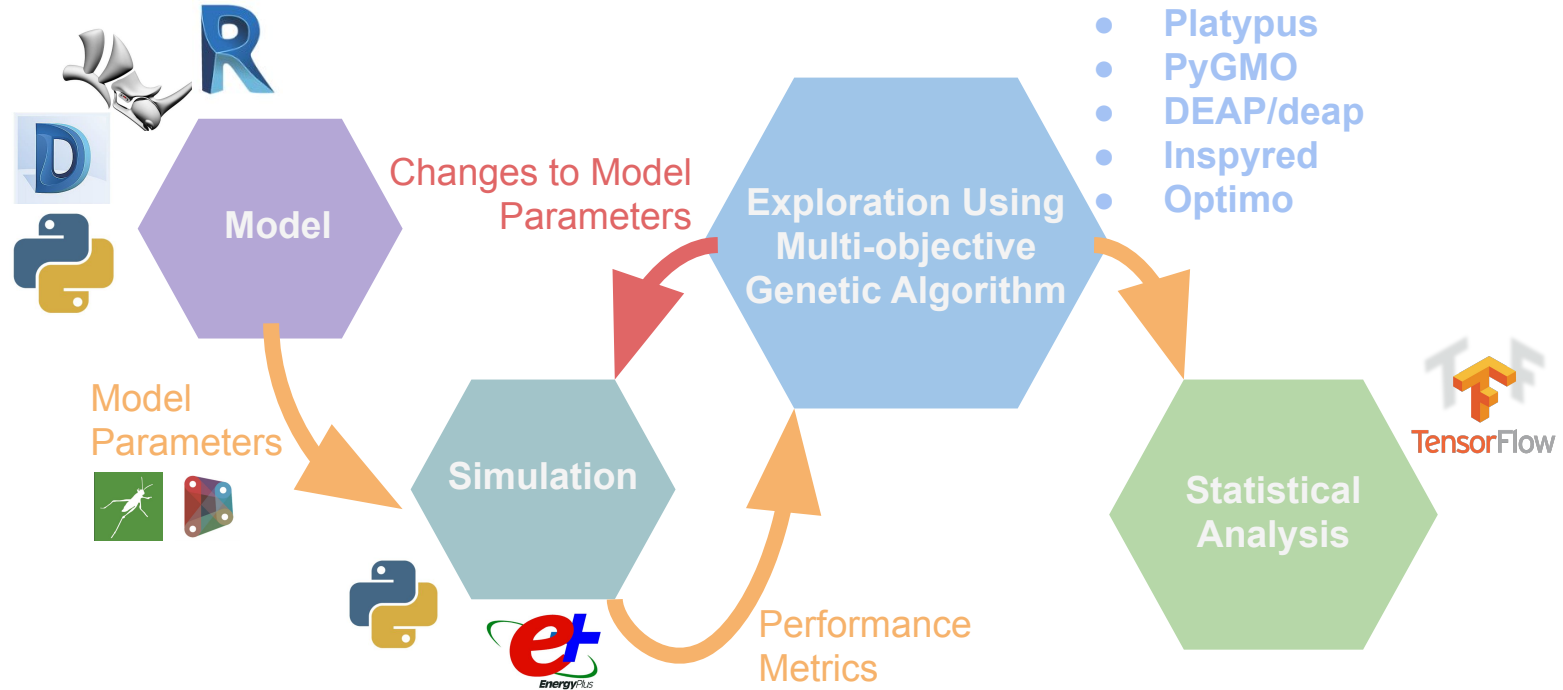
Looking Back : GD Methodology



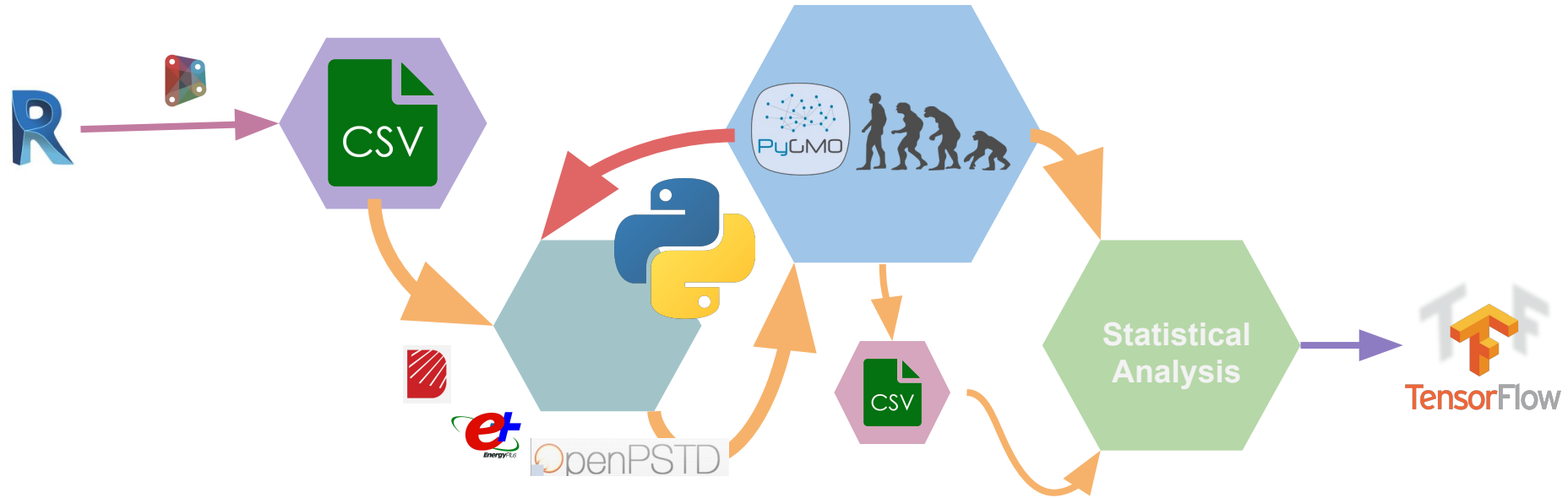
Be the chef, not the farmer*



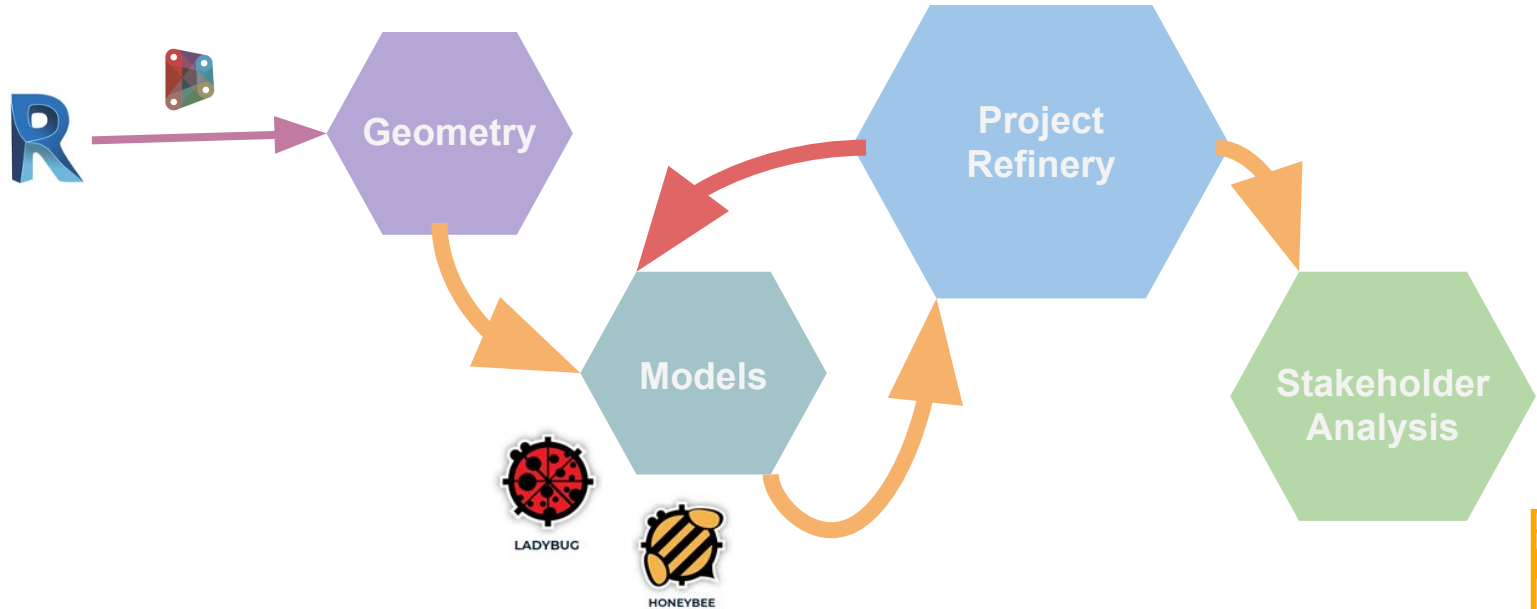
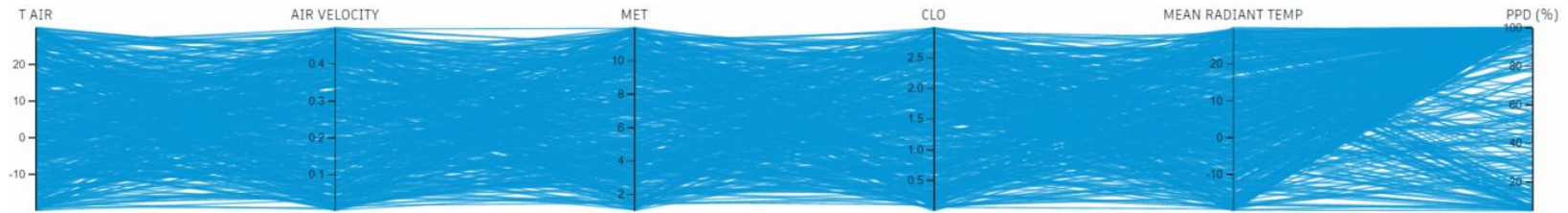
Looking Back : Tool Review



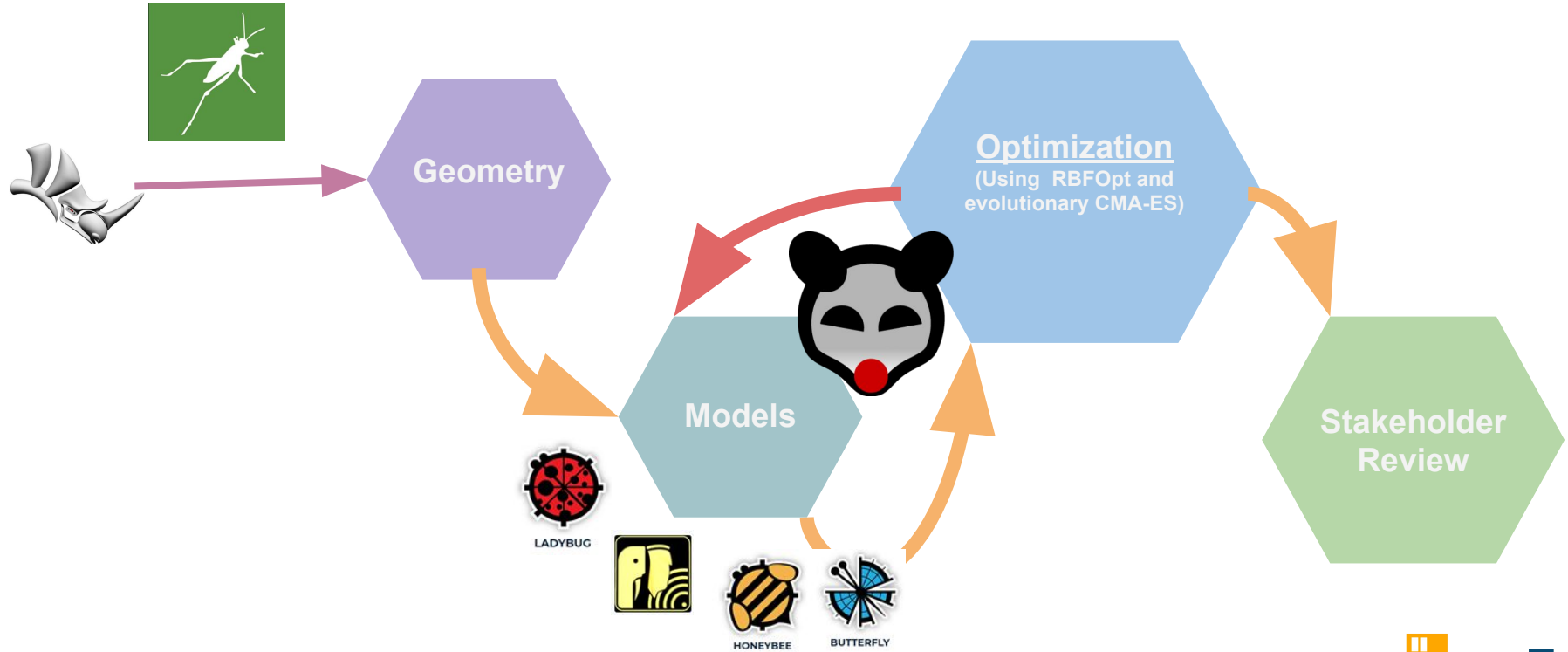
First Idea



Second Idea








Current Idea



Why did I move away from Dynamo?

Visual Programming Comparison

	 	
Interfaces with		
First Released	2013	2007
Open Source Back End	Yes	Yes
Python Interface	Yes	Yes, More Stable
Imports Geometry	Yes	Yes
Imports BIM Features	Yes	No
Apps / Plugins	1176	728, Tighter Control



LADYBUG



HONEYBEE

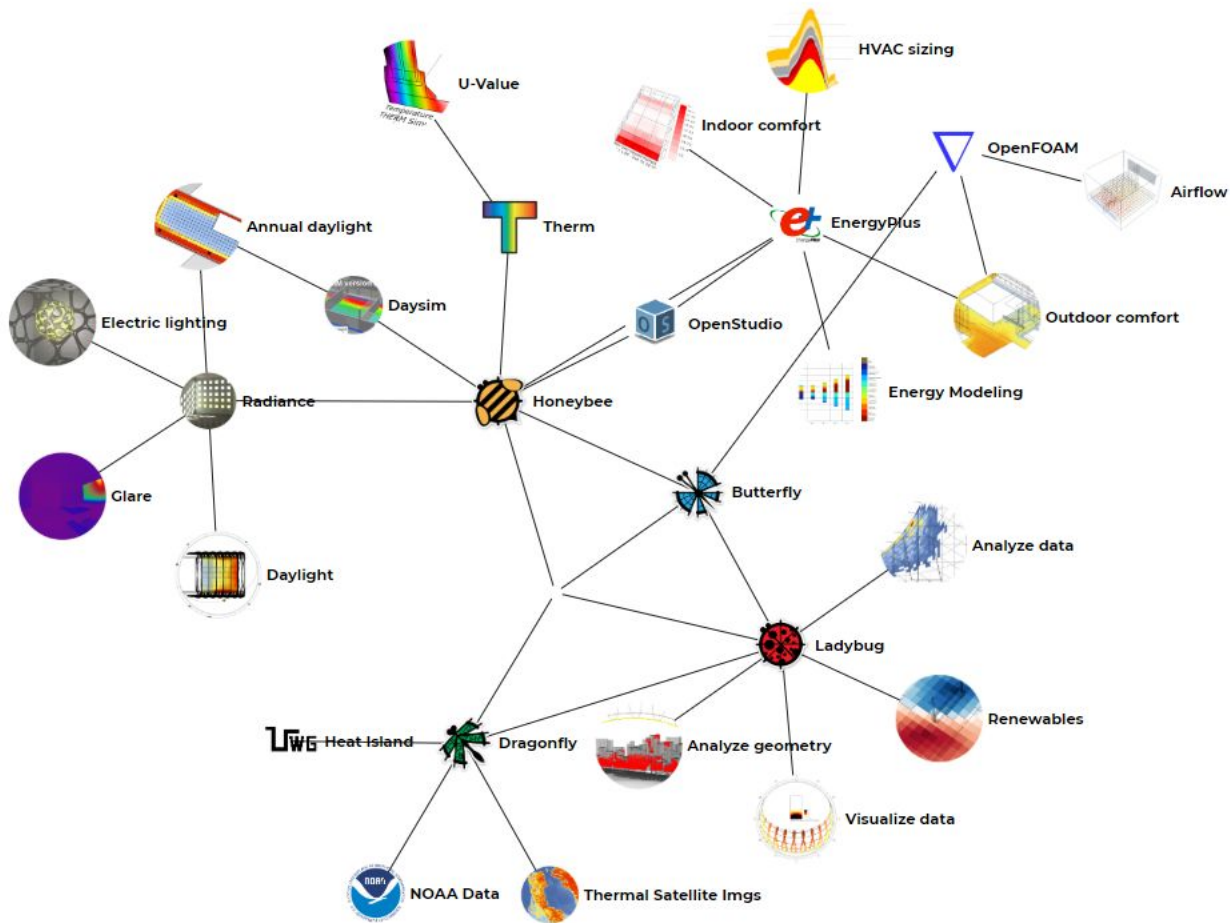


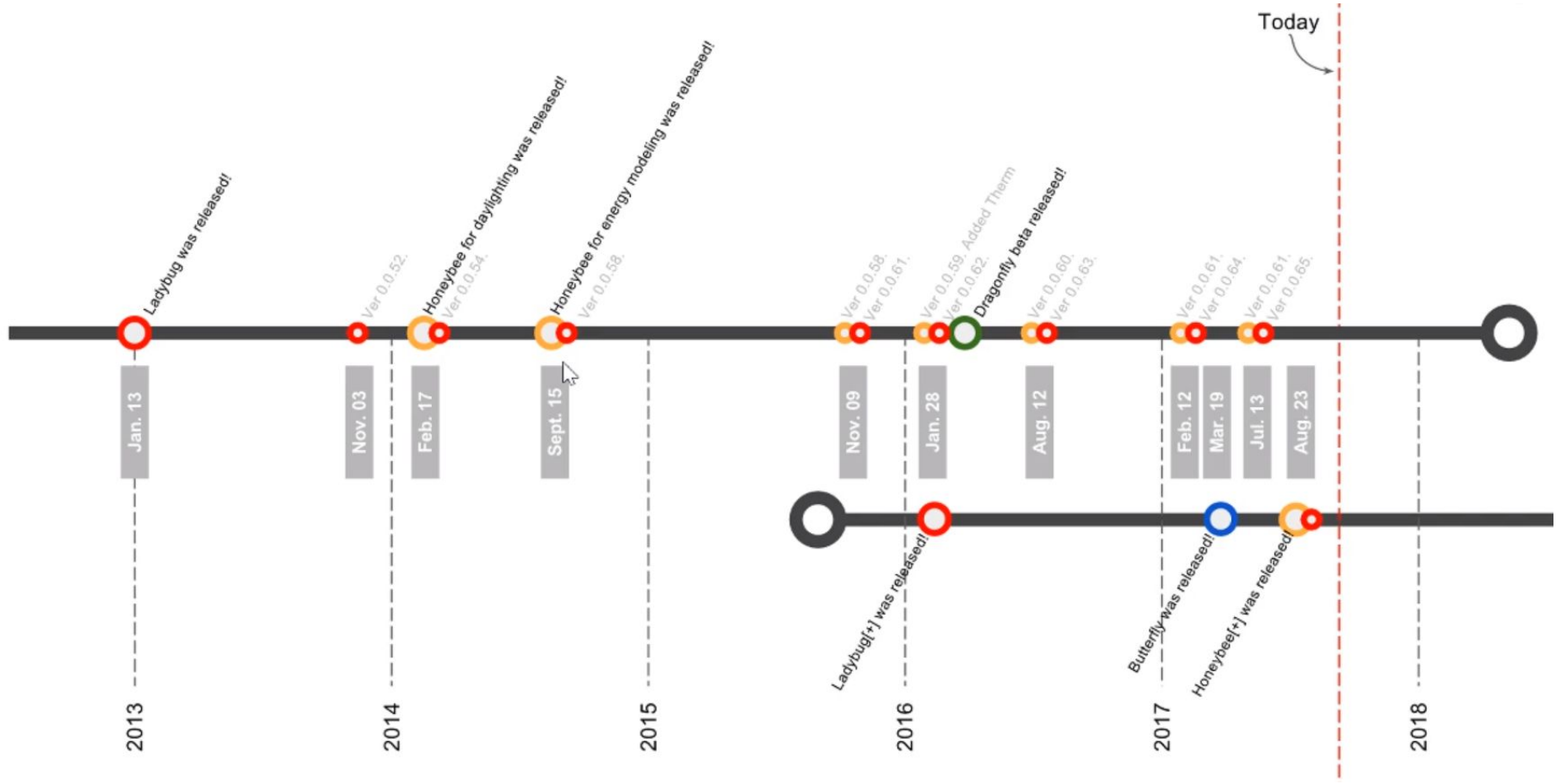
BUTTERFLY



DRAGONFLY

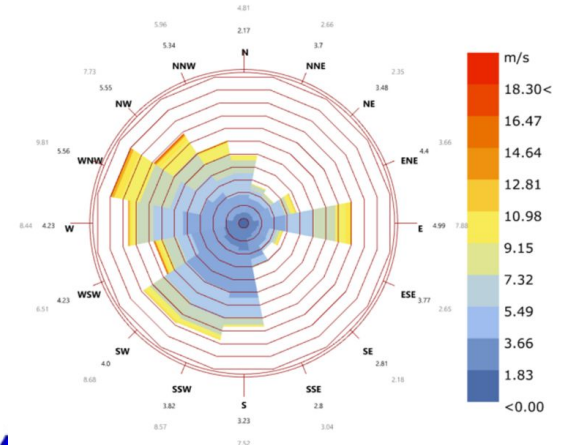
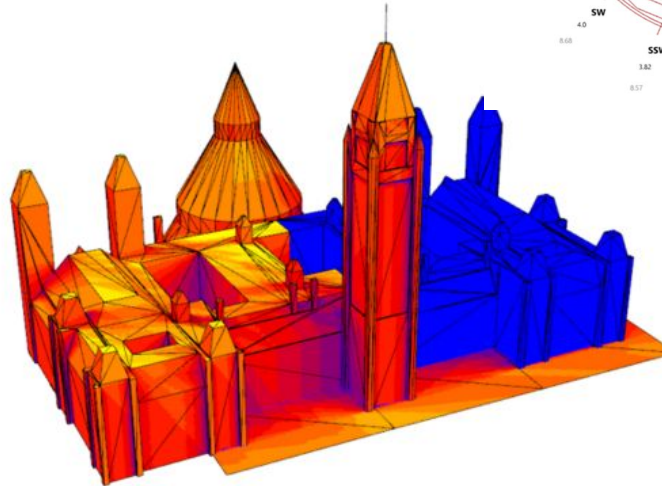
LINK



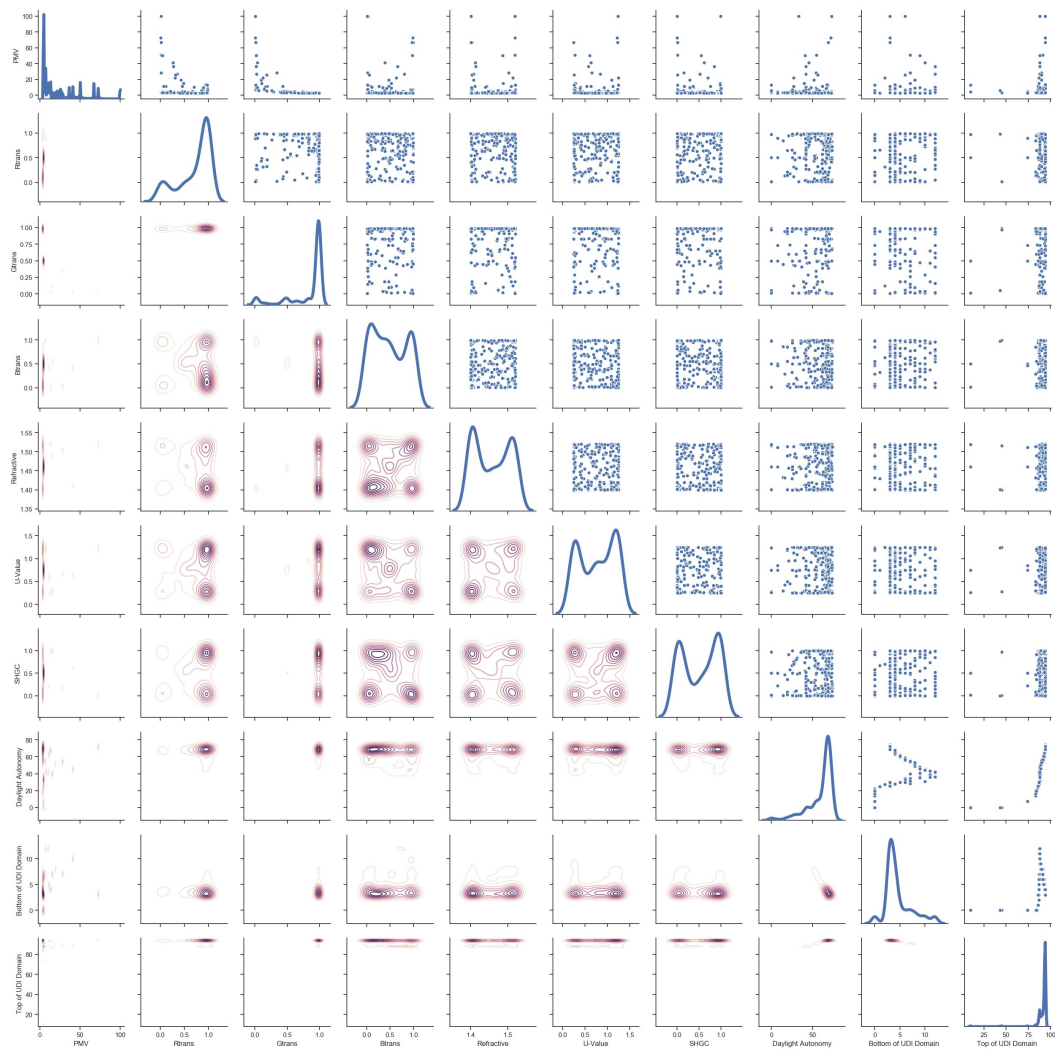


We should all be using / teaching grasshopper?

- Comfortable and interactive front end to **already verified simulation engines**
- Open source and developed in Python
- Robust data visualization capabilities
- Very flexible
- Extensive documentation
- Industry is using it!



Let's Dive into Grasshopper!

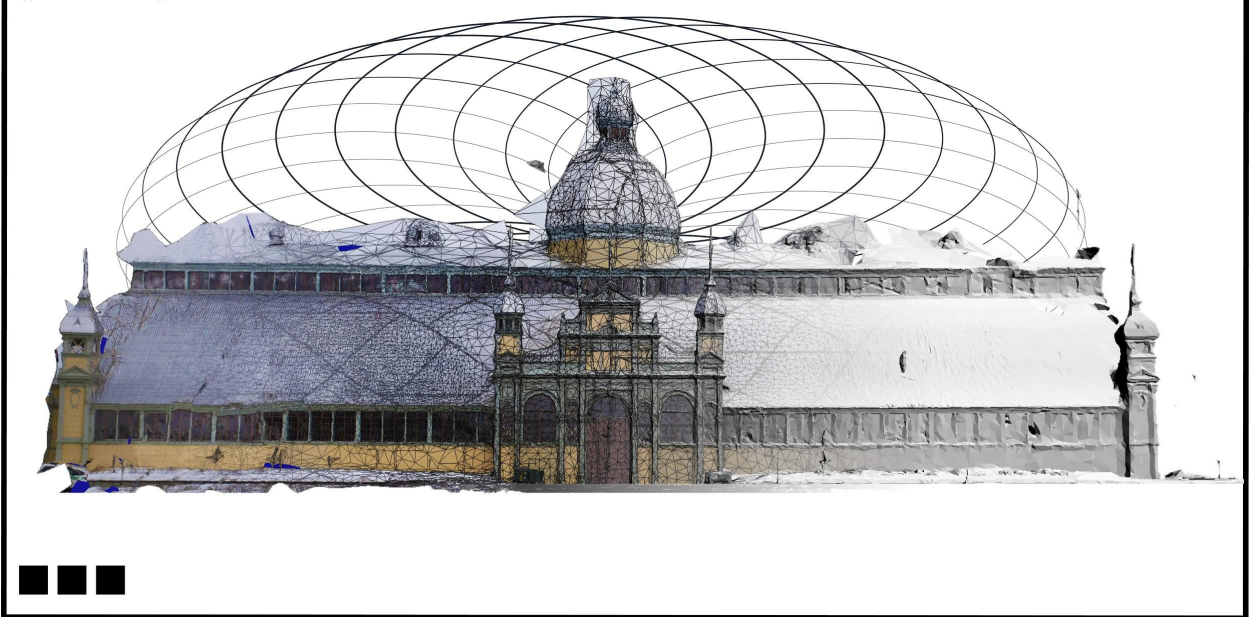


Looking Forward

- More optimization runs
- Develop balanced cost function for:
 - Light Comfort
 - Energy Efficiency
 - Thermal Comfort
 - Air Quality
- Figure out how to speed up run times
- Explore the potential for Acoustic Comfort modeling
- Develop other ways to navigate / communicate large volumes of options to stakeholders



~ // Aberdeen Pavilion // ~



45°24'00.1"N 75°40'58.8"W





Thank You

Adrian John Soble | adriansoble@cmail.carleton.ca





SLIDE ANNEX

IEQ Category	Metric Name	Ideal Range
 LIGHT	<ul style="list-style-type: none"> · Average light intensity · Work surface lighting intensity · View access distance · Spatial daylight autonomy · Annual sunlight exposure · Useful Daylight Illuminance 	<ul style="list-style-type: none"> · > 215 lux at 0.76 m · 300 lux—500 lux · 7.5 m - 12.5 m · > sDA_{300,50%} · < ASE_{1000,250}
Acoustic  COMFORT	<ul style="list-style-type: none"> · Exterior Noise Intrusion · Perceived Noise Criteria · Reverberation Time · Sound Transmission Class · Speech Transmission Index 	<ul style="list-style-type: none"> · > 50 dBA · 20 - 40 · RT60, 0.5 s—0.6 s · 45 STC—60 STC · 0.2—0.5
 AIR	<ul style="list-style-type: none"> · Formaldehyde · TVOC · CO · PM_{2.5} · PM₁₀ · Ozone · Radon · CO₂ · RH · Odor 	<ul style="list-style-type: none"> · < 27 ppb · < 500 µg/m³ · < 9 ppm · < 15 µg/m³ · < 50 µg/m³ · < 51 ppb · < 4 pCi/L · < 800 ppm · 30% - 90% · 0 - 4 OLF
 COMFORT	<ul style="list-style-type: none"> · PMV · PPD 	<ul style="list-style-type: none"> · ASHRAE Standard 55