



# Parties, Voters & The Environment

**Russell Dalton**  
**University of California, Irvine**

**Conference on Canada-Europe Transatlantic Dialogue:  
Environment Workshop, February 8. 2013, Ottawa, CA.**



# A Starting Point

**“We are not left, not right,  
we are out in front.”**

Jonathan Porritt,  
FOE Britain  
1980s

# **My Research Agenda for Today**

- **How does the emergence of environmentalism relate to the existing party cleavages in advanced industrial societies**
- **Has this relationship changed over time**
- **What is the link between voters and parties on environmental matters**

# Empirical Evidence

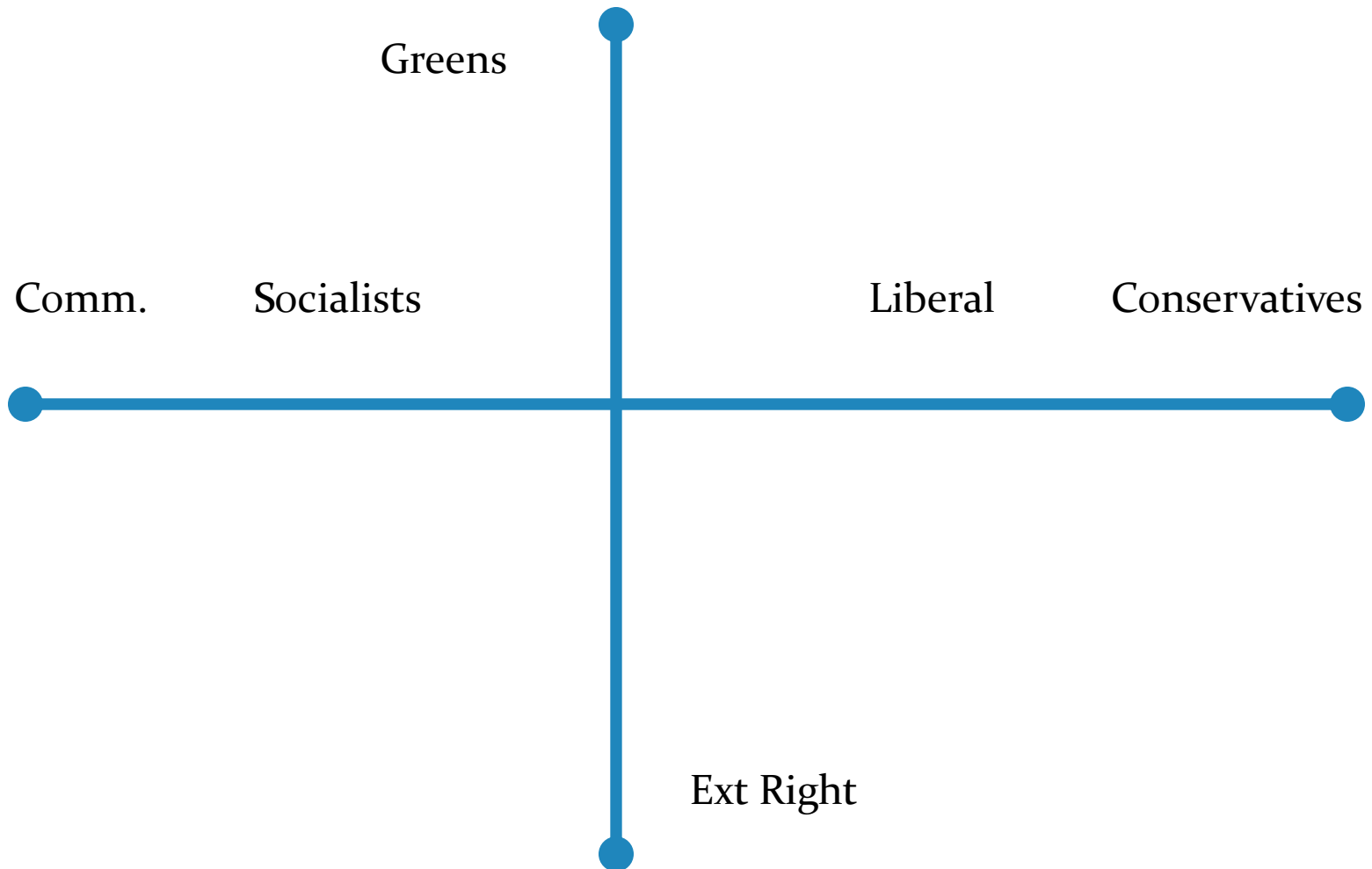
- **PARTY POSITIONS: the Hunt/Laver party expert study (1989)**
- **PARTY POSITIONS: the Benoit/Laver party expert study (2002-3)**
- **CITIZENS: the ISSP Environmental Module surveys (2010)**



## Parts I & II

# Parties and the Environment in Established Democracies

# New Cleavages and Old Parties

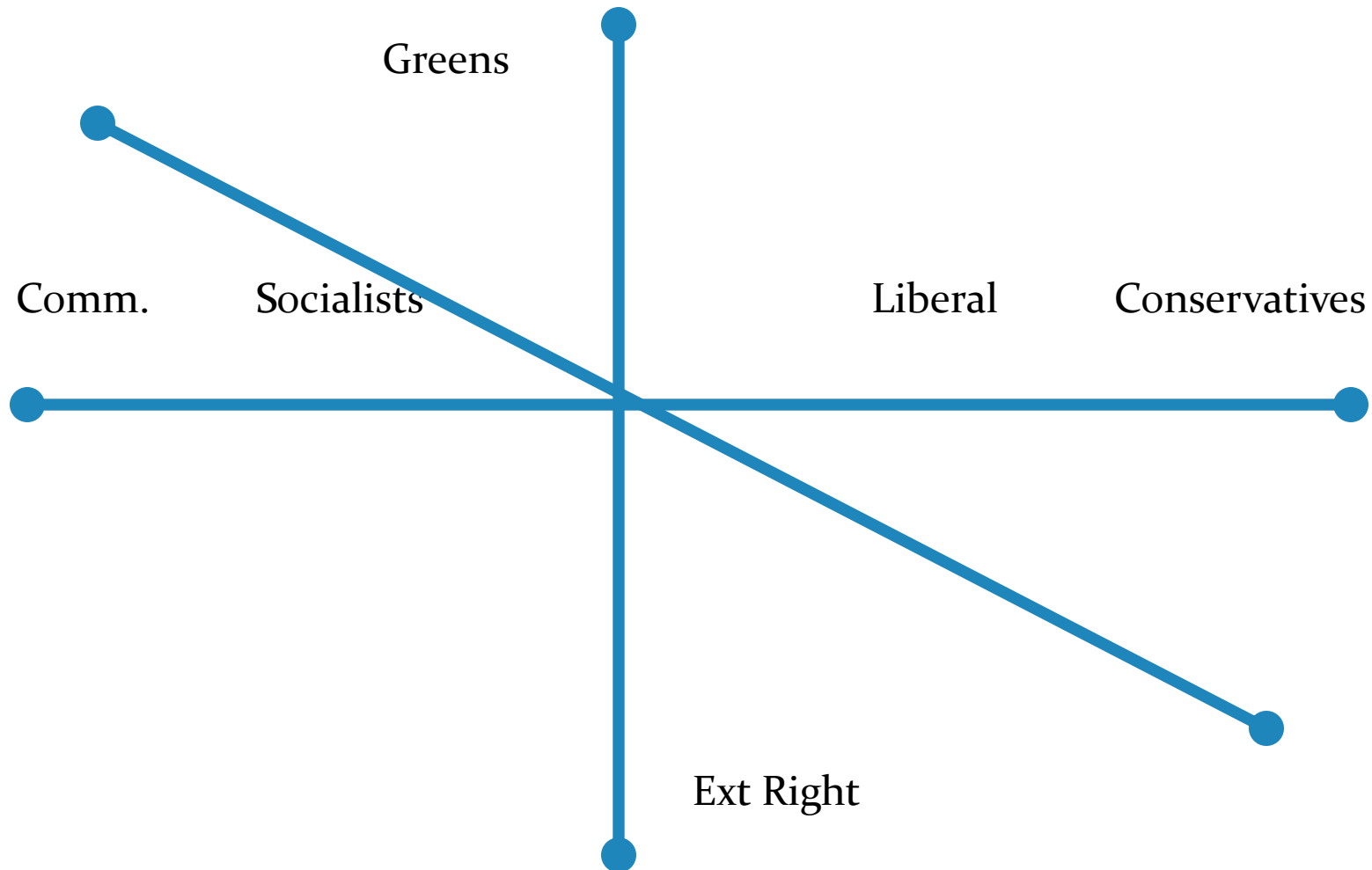


# Why this might change

## *ENVIRONMENTAL CONCERNS MAY BE INTEGRATED INTO THE EXISTING PARTY STRUCTURE*

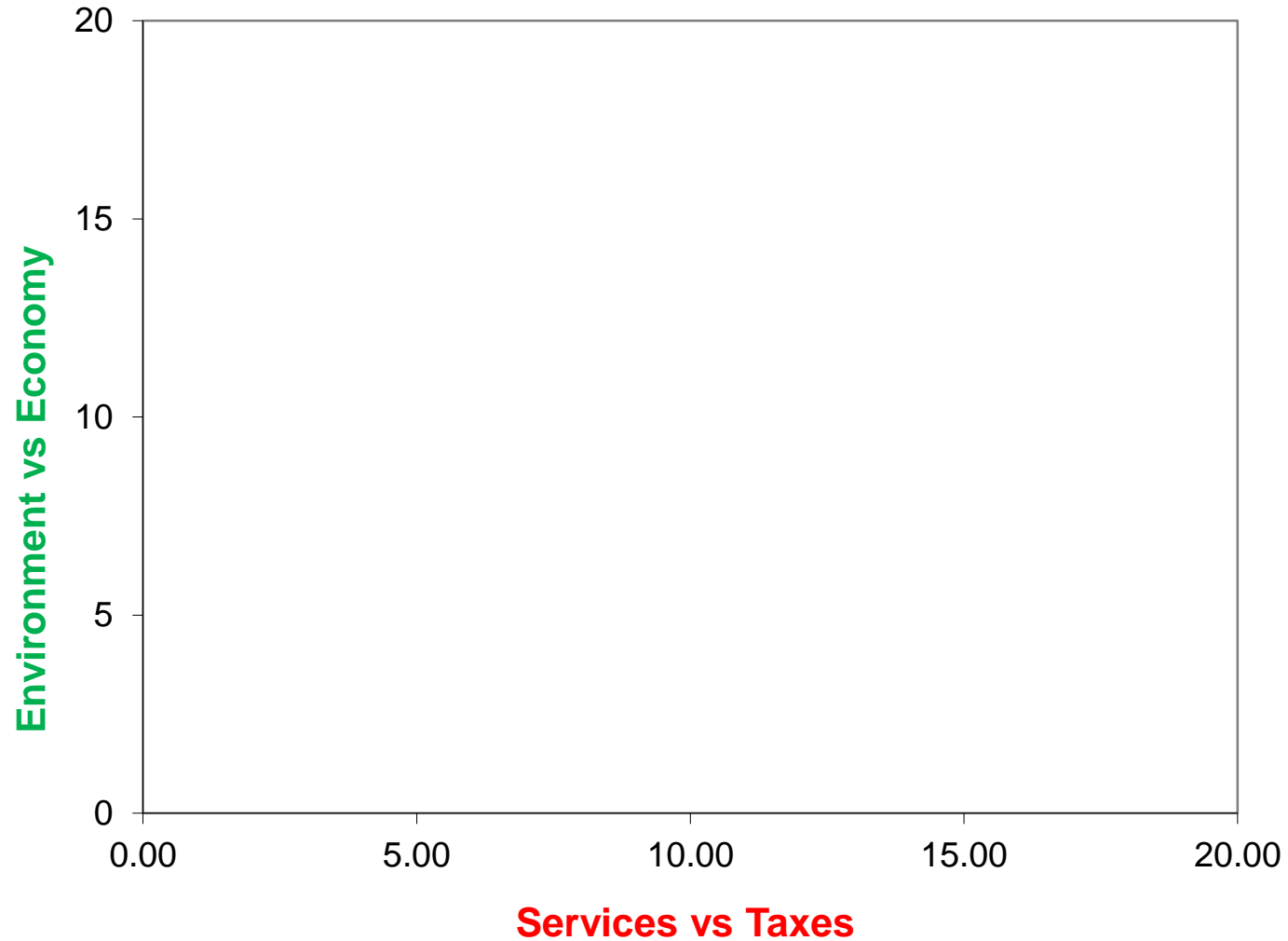
- Established parties respond to new issue demands
- Green parties are forced to broaden their policies on pre-existing issues (welfare state, social policy)
- Greens moderate in response to governing
- The aging of Green parties and leaders

# Possible Change in Party Cleavages Parties

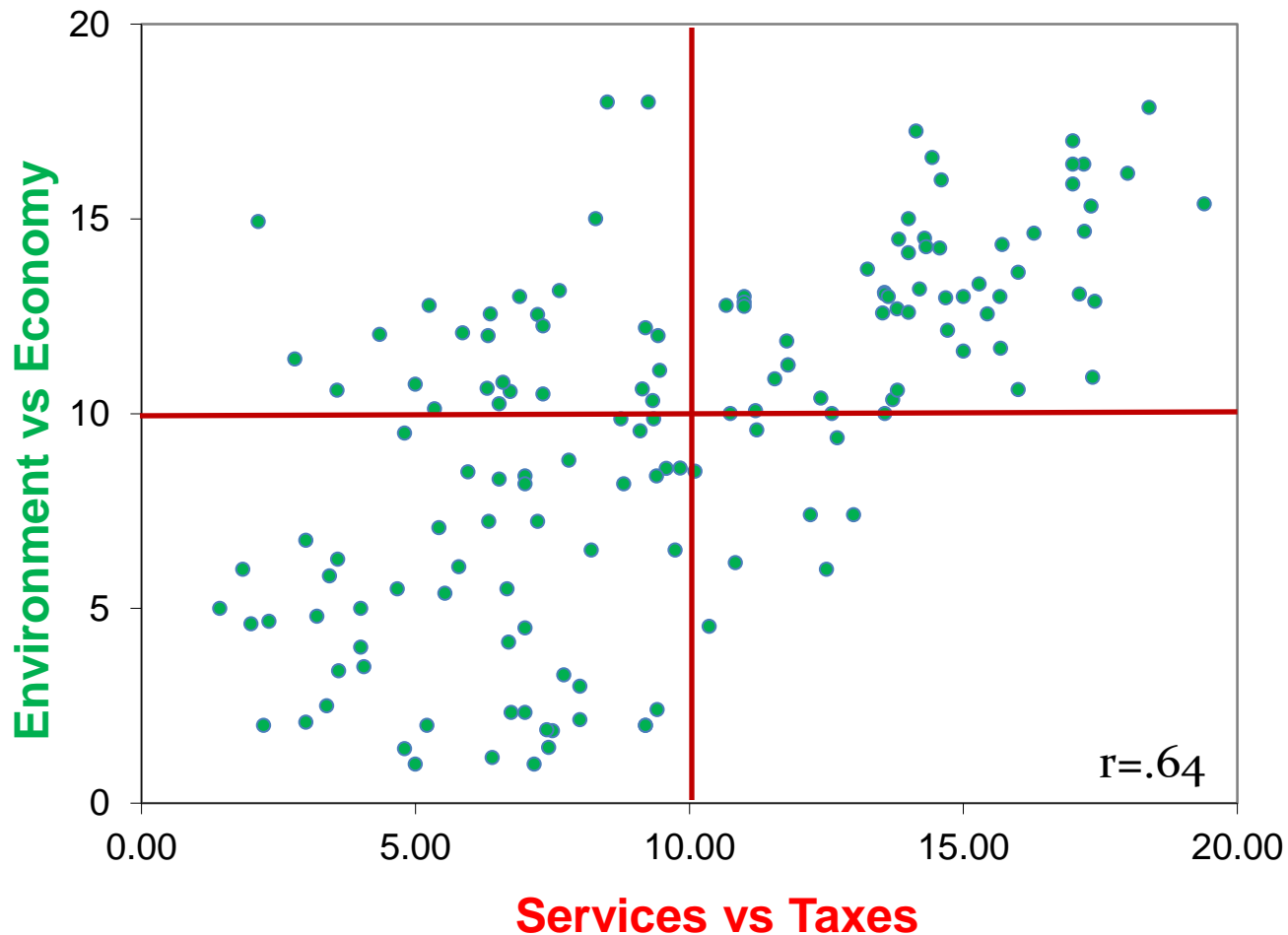




# Empirical Evidence

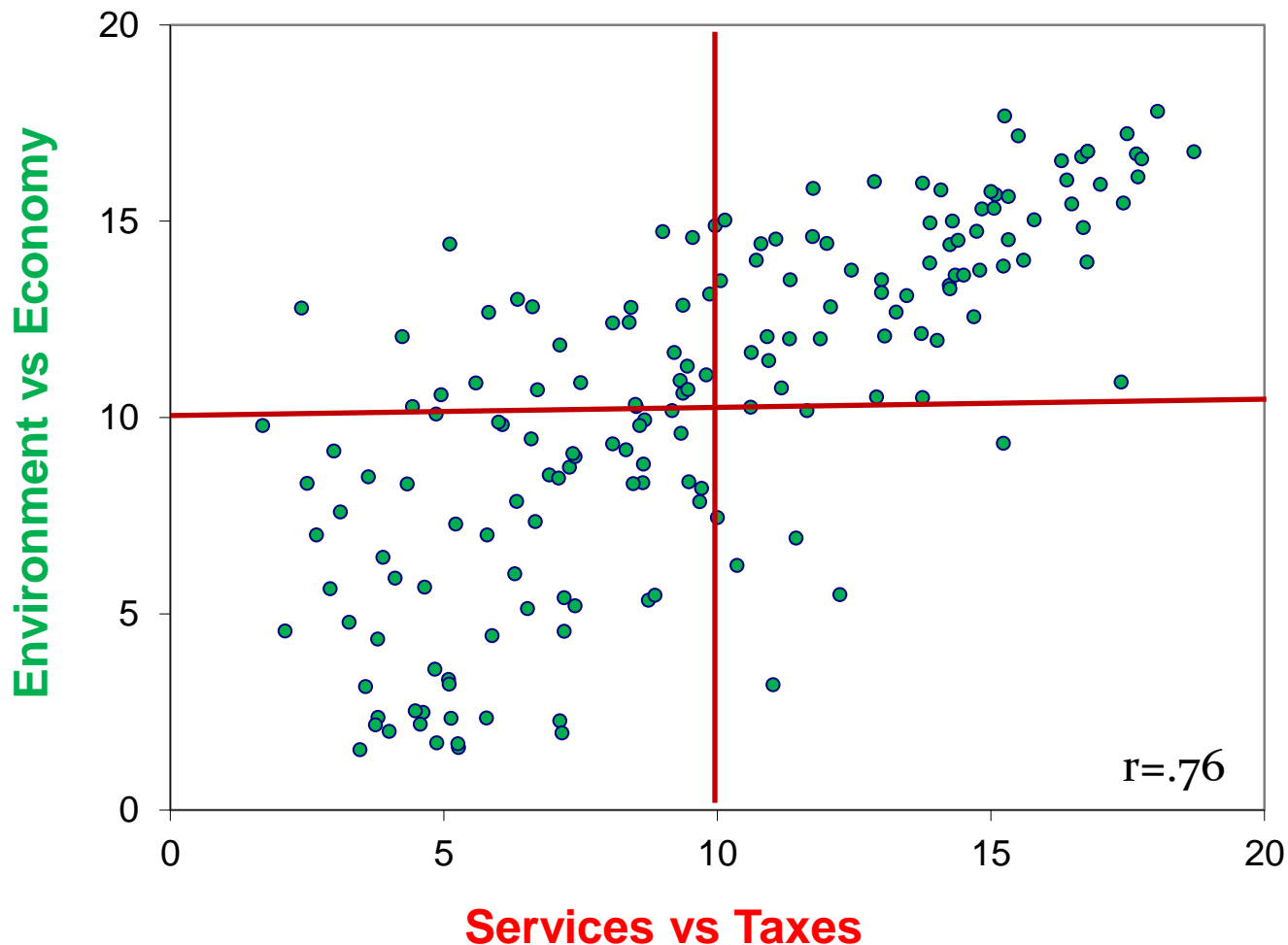


# Two Party Cleavages -- 1989



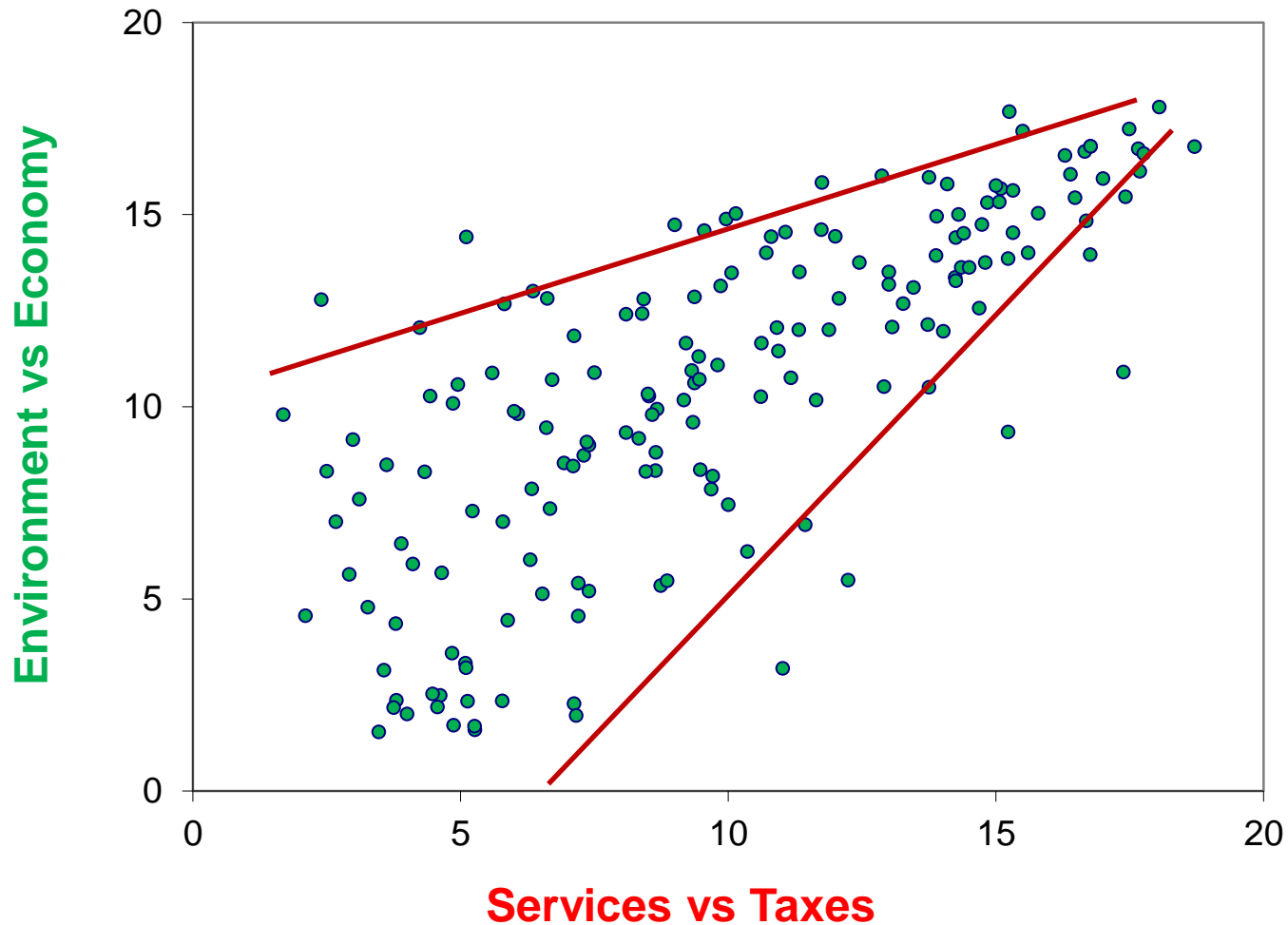
Hunt/Laver 1989 (Expert placement of 146 parties in West Europe)

# Two Party Cleavages – 2002

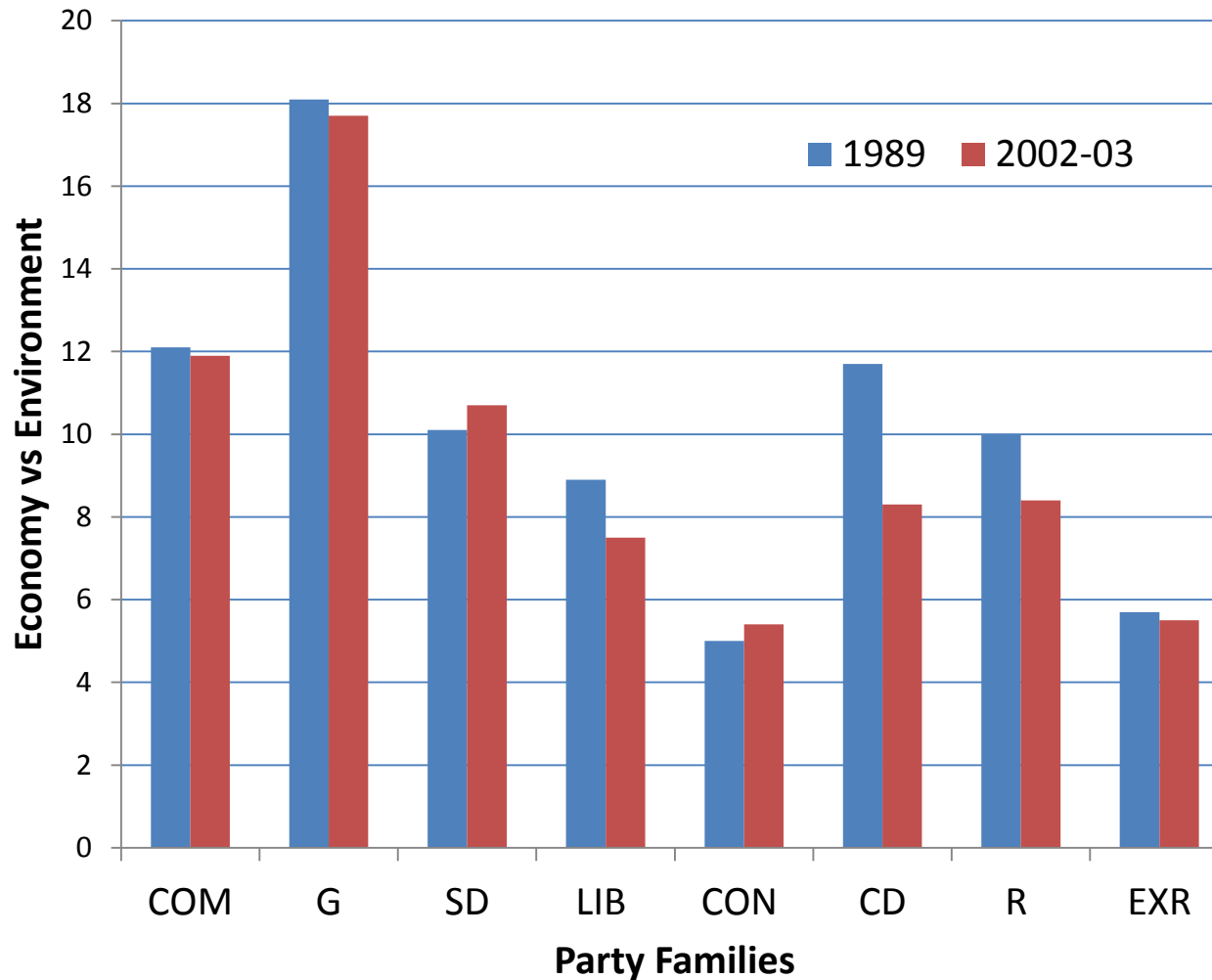


Benoit/Laver 2002-03 (Expert placement of 170 parties in West Europe)

# Disagreement on the Left -- 2002



# Party Families and Environment

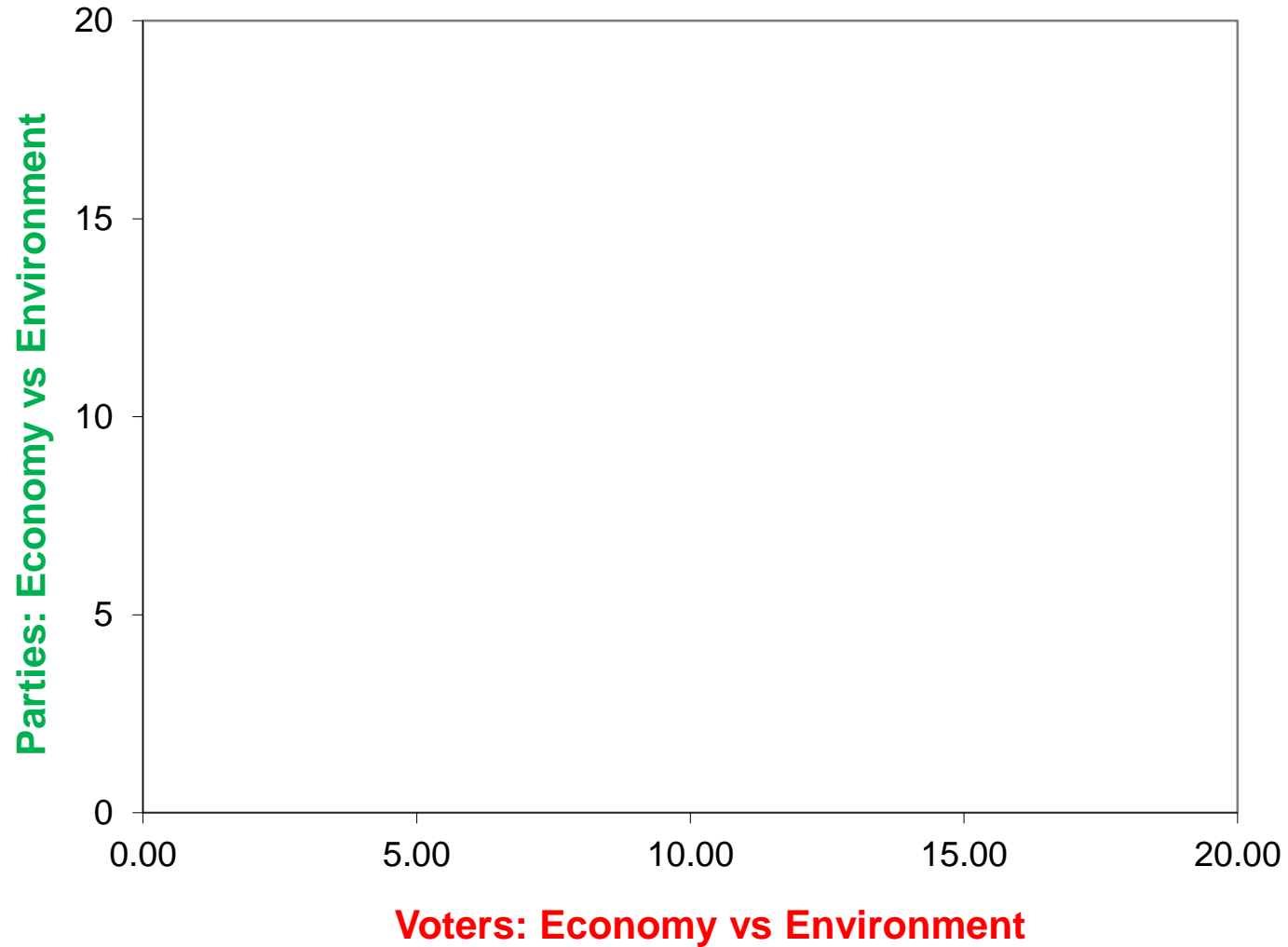




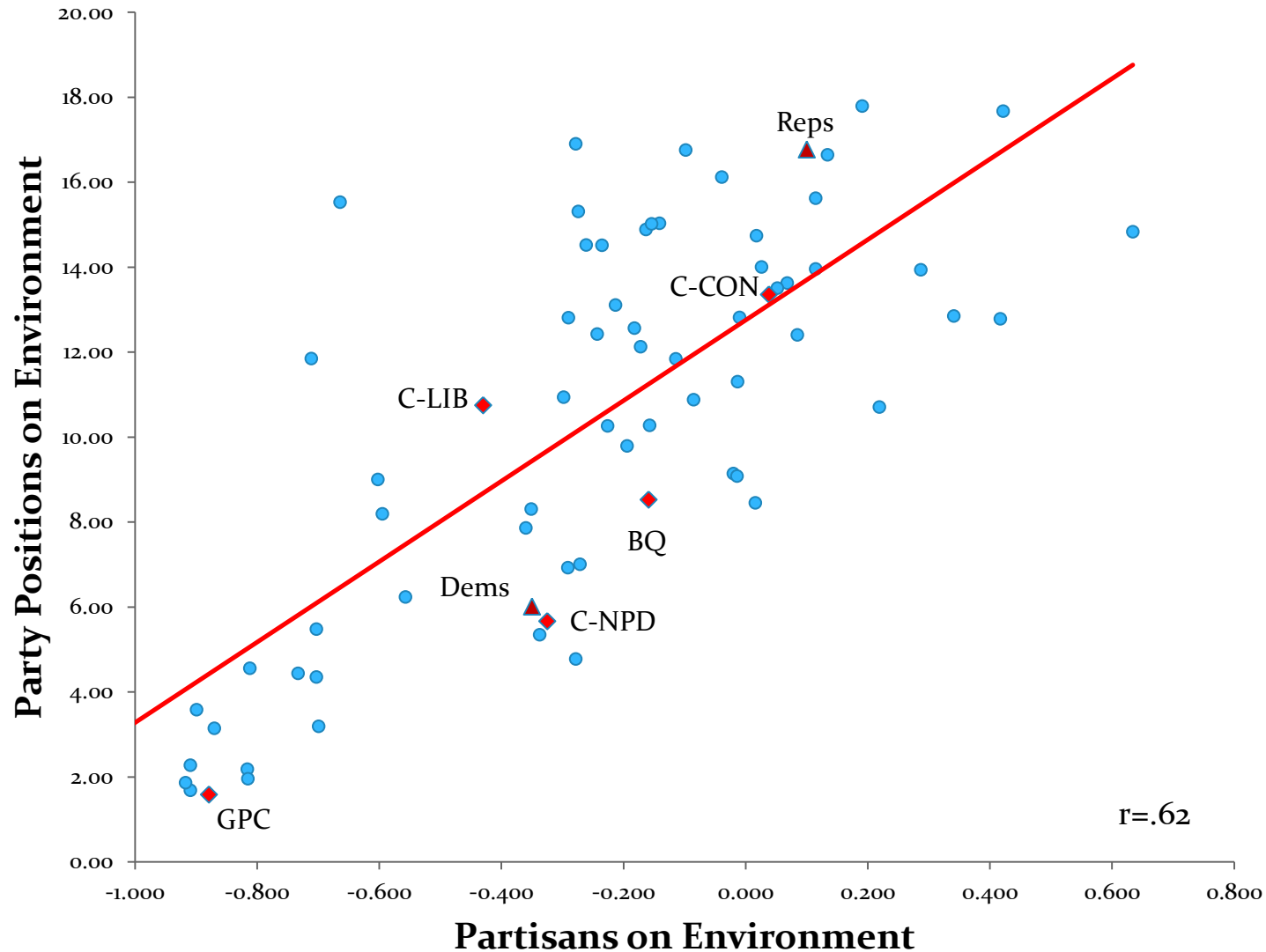
## Part II

# Parties and their Voters

# Empirical Evidence



# Voters (2010) & Parties (2002)





# Conclusions

- Green issues still salient to parties in Western industrial democracies
- Green cleavage persists among Western parties— and divisions among Leftist parties
- Cleavage less developed in new democracies
- Green representation is high: voters find parties that reflect their views.