



Booking & Rooms Overview

Sanctuary Main Hall	2
Woodside Hall	4
Woodside Kitchen.....	6
Jean Teron Green Room	7
Library.....	8
Parlour.....	9
Classroom 14	10
Classroom 15/16	11
Classroom 17	12
Fellowship Hall	13
Basement Floor – Level 1	14
Ground Floor – Level 2.....	15
Upper Floor – Level 3.....	16

Sanctuary Main Hall



Audience Seating Capacity:

- 844 (559 orchestra + 4 accessible + 281 balcony)
 - 822 (537 orchestra + 4 accessible + 281 balcony) with stage extension
- Note: all staff/volunteers to be assigned a seat to be included in the capacity

Stage Capacity:

- 120 artists/presenters/staff
 - 140 artists/presenters/staff with stage extension
- Note: the stage capacity to be reduced depending on the stage setup

Description and Features:

- Beautiful and historic main hall with excellent acoustics
- Romanesque byzantine architecture
- Ideal for hosting performances, lectures, and beyond
- Performance chairs and music stands available upon request
- Grand piano and pipe organ instrument options available
- Rolling acoustic shell and 3ft stage extension installations available to book
- Basic audio, lighting and video capabilities as outlined below
- Blinds for ground and balcony level rectangle exterior windows

General Concert/Event Rates:

Corporate \$189/hr + HST
Non-Profit \$158/hr + HST
Plus applicable staffing or services fees.

General Rehearsal Rates:

Corporate \$126/hr + HST
Non-Profit \$105/hr + HST
Plus applicable staffing or services fees.

Notes:

3-hour minimum booking required for all bookings and 5-hour minimum booking required for all concert bookings. User Groups must include time for deliveries, setup, and strike. All rates are subject to updates and revisions.

Sanctuary Main Hall – *Continued*

Technical Specifications

Approximate Stage Dimensions:

- 44ft deep (including alcove)
- 32ft deep (excluding alcove)
- 34ft wide (between pillars)

Audio:

- Two JBL AS2212 speakers with additional 2445J high frequency drivers (1 per side)
- 12" low frequency driver
- High frequency drivers: 4" voice coil, 2" throated horn
- Main speakers processed by DBX Driverack model 260
- Main speaker system is mono
- Main speakers are powered by an 800 Watt per channel QSC amplifier, providing ample power for most acoustic and small band shows
- 3 Wireless Shure ULXD channels (Up to 4 additional channels may be available based on technician and/or show requirements)
- Various assortment of wired mics (based on availability)
- Audio controlled via Yamaha TF3 at front of house

Lighting:

- 10 LED Elation Colour 5 Profile fixtures provide a wash of the stage
- 2 LED Elation Colour 5 Profile fixtures in balcony (additional front lighting or specials based on technician and/or show requirements)
- Various House fixtures to provide audience lights and architectural ambiance
- Lighting controlled via ETC ColorSource 40 at front of house

Video:

- Dual rear projection system with two (2) 3500 Lumen Projectors (one on each side of the stage). Image duplicated on screens. Resolution of 1280 x 800 pixels.
- Retractable remote-controlled Screens (16:9 aspect ratio).
- Connection to screens via HDMI connection at Front of House or at Stage Left.
- Audio interface available upon request.

Electrical:

- Four 30amp (208/120Volt) outlets are available on the stage (upstage right)
- Four 15amp 120volt U-ground outlets (on 2 circuits) are available on the stage (upstage right)
- Two additional 30amp (208/120Volt) outlets at the rear of the main hall, in a separate storage area

Woodside Hall



Dimensions:

- Approximate dimensions 38 x 57 ft

Capacity:

- Varies depending on setup
- Lecture style setup < 150
- Banquet/dinner style setup < 72-78
- Room capacity / standing reception < 200

Description and Features:

- Large windows, high ceilings and great natural light
- Ideal lecture or reception space
- Access to private garden (seasonal)
- Tables and chairs available by request
- Grand piano instrument option available (Can be moved within room by CDCC Staff)
- Adjacent to bookable large kitchen for catering and hospitality requirements
- Woodside Hall is recommended to be booked alongside large concert events in the sanctuary for pre or post lobby area for patrons
- Blinds for all exterior windows and doors, fluorescent lighting in two zones

General Rates:

Corporate \$126/hr + HST

Non-Profit \$105/hr + HST

Plus applicable staffing or services fees.

Notes:

3-hour minimum booking required for all bookings and 5-hour minimum booking required for all concert bookings. User Groups must include time for deliveries, setup, and strike. All rates are subject to updates and revisions.

Woodside Hall – *Continued*

Technical Specifications

Audio:

- Electro-Voice ZX-1 Speakers, 2 at each end of the room.
- 2 Wireless Shure UHF-R Hand Held Mics (Up to 2 additional channels and/or belt pack mics may be available based on technician and/or show requirements)
- Line input for external audio devices
- Laptop audio interface - audio connection available for laptop computer

Video:

- 12ft video screen (front projection, ceiling mounted at South end of room)
- Portable LCD projector available to book

Woodside Kitchen



Dimensions:

- Approximate dimensions 26 x 17 ft (main kitchen)

Capacity:

- Room capacity of 20

Description and Features:

- Basic service kitchen available to support catered meals & receptions
- There are two residential stoves, and residential microwave
- There are three double sinks, and one industrial dishwasher (requiring CDCC orientation)
- There is one double-wide refrigerator, and one standing freezer
- One hot water and one coffee percolator (coffee/supplies not included)
- User groups are required to bring all service ware, linens and prep materials
- The kitchen connects directly to Woodside Hall through a servery area

General Rates:

Corporate \$63/hr + HST
Non-Profit \$53/hr + HST

General Rates w/ Woodside Hall:

Corporate \$32/hr + HST
Non-Profit \$27/hr + HST

Notes:

3-hour minimum booking required for all bookings and 5-hour minimum booking required for all concert bookings. User Groups must include time for deliveries, setup, and strike. All rates are subject to updates and revisions.

Jean Teron Green Room



Dimensions:

- Approximate dimensions are 36 x 25 ft

Capacity:

- Varies depending on setup
- Lecture style setup < 70
- Room capacity / standing reception < 90

Description and Features:

- Stained glass and wood features
- Ideal green room or meeting space
- Tables and chairs available upon request
- Grand piano instrument option available (Not to be moved within room at this time)
- Easy access to Sanctuary stage right entrance and adjacent Woodside
- The Jean Teron Green Room is recommended to be booked alongside large concert events in the Sanctuary as a green room or volunteer room

General Rates:

Corporate \$63/hr + HST

Non-Profit \$53/hr + HST

Plus applicable staffing or services fees.

Notes:

3-hour minimum booking required for all bookings and 5-hour minimum booking required for all concert bookings. User Groups must include time for deliveries, setup, and strike. All rates are subject to updates and revisions.

Library



Dimensions:

- Approximate dimensions are 12 x 12 ft

Capacity:

- Room capacity / meeting setup < 10

Description and Features:

- Natural light, faux fireplace and wood features
- Ideal small green room or meeting space
- Table and leather chairs remain in the space
- Extra tables and chairs available upon request
- Easy access to stage right entrance in main hall
- The Library is recommended to be booked alongside events hosted in the Sanctuary main hall as a guest or solo artist green room

General Rates:

Corporate \$19/hr + HST

Non-Profit \$16/hr + HST

Plus applicable staffing or services fees.

Notes:

3-hour minimum booking required for all bookings and 5-hour minimum booking required for all concert bookings. User Groups must include time for deliveries, setup, and strike. All rates are subject to updates and revisions.

Parlour



Dimensions:

- Approximate dimensions for Room 7 (West room) are 32 x 22 ft
- Approximate dimensions for Room 8 (East room) are 28 x 25 ft

Capacity:

- Varies depending on setup
- Lecture style setup < 75
- Room capacity / standup reception < 130

Description and Features:

- Ideal reception room or meeting space
- Flexible couch chairs remain in the space
- Extra tables and chairs available upon request
- Two grand piano instrument option available (Can be moved within rooms by CDCC Staff)
- Accordion-style door can easily define or separate into two rooms
- Small kitchenette included with the space (Access through hallway via stairs or from Room 8)
- Universally Accessible only through Room 7
- The Parlour / Room 7 is recommended to be booked alongside concert events in the Sanctuary for smaller pre- or post-concert receptions

General Rates:

Corporate \$82/hr + HST

Non-Profit \$68/hr + HST

Plus applicable staffing or services fees.

Notes:

3-hour minimum booking required for all bookings and 5-hour minimum booking required for all concert bookings. User Groups must include time for deliveries, setup, and strike. All rates are subject to updates and revisions.

Classroom 14



Dimensions:

- Approximate dimensions are 26 x 23.5 ft

Capacity:

- Varies depending on setup
- Lecture style setup < 50
- Classroom style setup < 18
- Room capacity < 60

Description and Features:

- Spacious multi-purposes flex spaces
- Ideal for classes or meeting space
- Extra tables and chairs available upon request
- Upright piano instrument option available (Not to be moved within room at this time)
- Access to small communal kitchenette on same level
- Projector and speakers installed in the ceiling

General Rates:

Corporate \$32/hr + HST

Non-Profit \$27/hr + HST

Plus applicable staffing or services fees.

Notes:

3-hour minimum booking required for all bookings and 5-hour minimum booking required for all concert bookings. User Groups must include time for deliveries, setup, and strike. All rates are subject to updates and revisions.

Classroom 15/16



Dimensions:

- Approximate dimensions are 43.5 x 33 ft

Capacity:

- Varies depending on setup
- Lecture style setup < 100
- Classroom style setup < 40
- Room capacity / standing reception < 130

Description and Features:

- Hardwood oak sprung floor
- Ideal for dance, movement and drama classes or meeting space
- Extra tables and chairs available upon request
- Access to small communal kitchenette on same level

General Rates:

Corporate \$63/hr + HST

Non-profit \$53/hr + HST

Plus applicable staffing or services fees.

Notes:

3-hour minimum booking required for all bookings and 5-hour minimum booking required for all concert bookings. User Groups must include time for deliveries, setup, and strike. All rates are subject to updates and revisions.

Classroom 17



Dimensions:

- Approximate dimensions 32 x 24 ft

Capacity:

- Varies depending on setup
- Lecture style setup < 60
- Classroom style setup < 30
- Room capacity / standing reception < 60

Description and Features:

- Spacious multi-purpose flex space
- Ideal for classes or meeting space
- Extra tables and chairs available upon request
- Grand piano instrument option available (Can be moved within room by CDCC Staff)
- Access to small communal kitchenette on same level
- Projector and speakers installed in the ceiling

General Rates:

Corporate \$44/hr + HST

Non-Profit \$37/hr + HST

Plus applicable staffing or services fees.

Notes:

3-hour minimum booking required for all bookings and 5-hour minimum booking required for all concert bookings. User Groups must include time for deliveries, setup, and strike. All rates are subject to updates and revisions.

Fellowship Hall

**Dimensions:**

- Approximate dimensions 40 x 40 ft

Capacity:

- Varies depending on setup
- Lecture style setup < 120
- Room capacity / stand-up reception < 150

Description and Features:

- Large and spacious multi-purposes flex space
- Ideal large classroom or small presentation space
- Tables and chairs available by request
- Grand piano instrument option available (Can be moved within room by CDCC Staff)
- Portable screen, projector, and audio options available

General Rates:

Corporate \$100/hr + HST

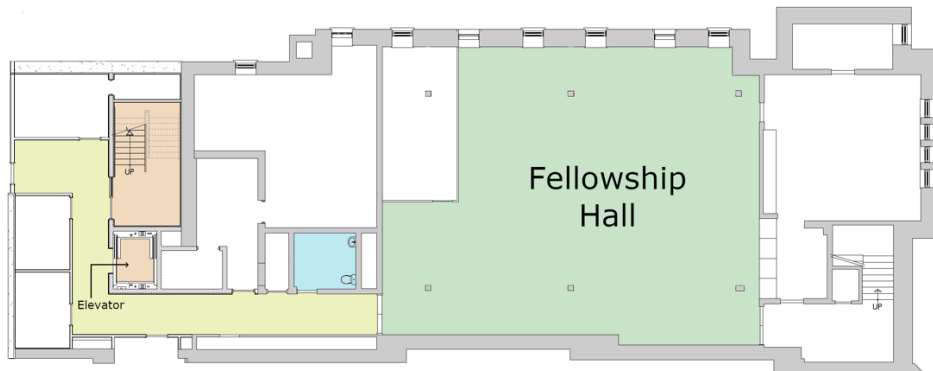
Non-Profit \$84/hr + HST

Plus applicable staffing or services fees.

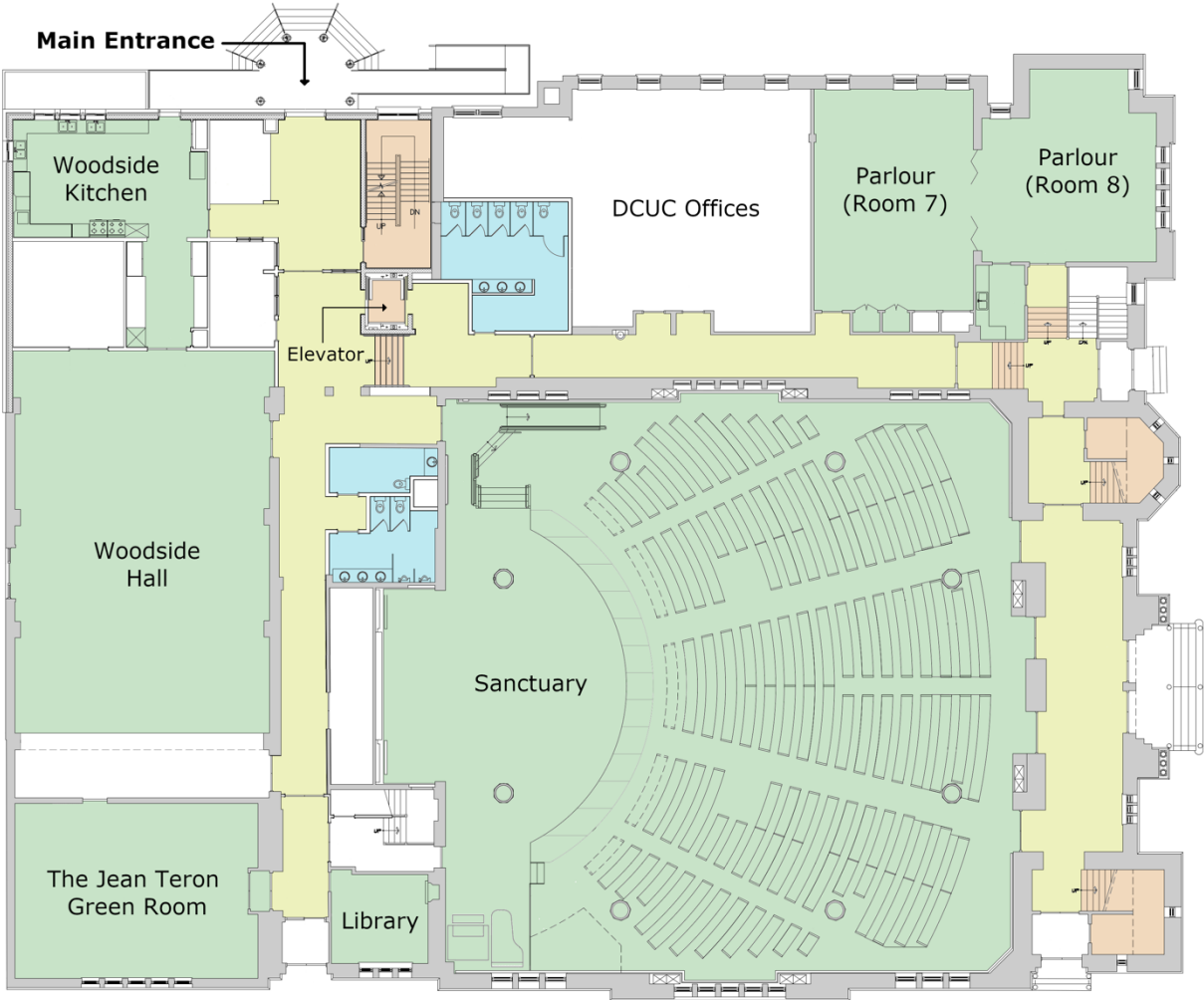
Notes:

3-hour minimum booking required for all bookings and 5-hour minimum booking required for all concert bookings. User Groups must include time for deliveries, setup, and strike. All rates are subject to updates and revisions.

Basement Floor – Level 1



Ground Floor – Level 2



Upper Floor – Level 3

