

Putting Community first: Practices and policies for maximizing the benefits to nonprofits of community-campus engagement

Ted Jackson, Geri Briggs, Karen Shcwarz, Peter Andree, Cathleen Kneen, Patricia Ballamingie, Stephanie Kittmeer, Christopher Yordy & Christina Muehlberger



Introduction

- Overview of CFICE (Ted and Geri)
- What's in a theory? (Chris)

Five great Hubs (and four featured here)

1. Poverty Reduction Hub (Karren)
2. Community Environmental Sustainability Hub (Trish, Stephanie)
3. Knowledge Mobilization Hub (Geri)
4. Community Food Security Hub
(Cathleen, Peter, Christina)



CFICE Purpose

CFICE is a 7-year project that aims to strengthen Canadian non-profits, universities and colleges, and funding agencies to build ***more successful, innovative, resilient and prosperous communities.***

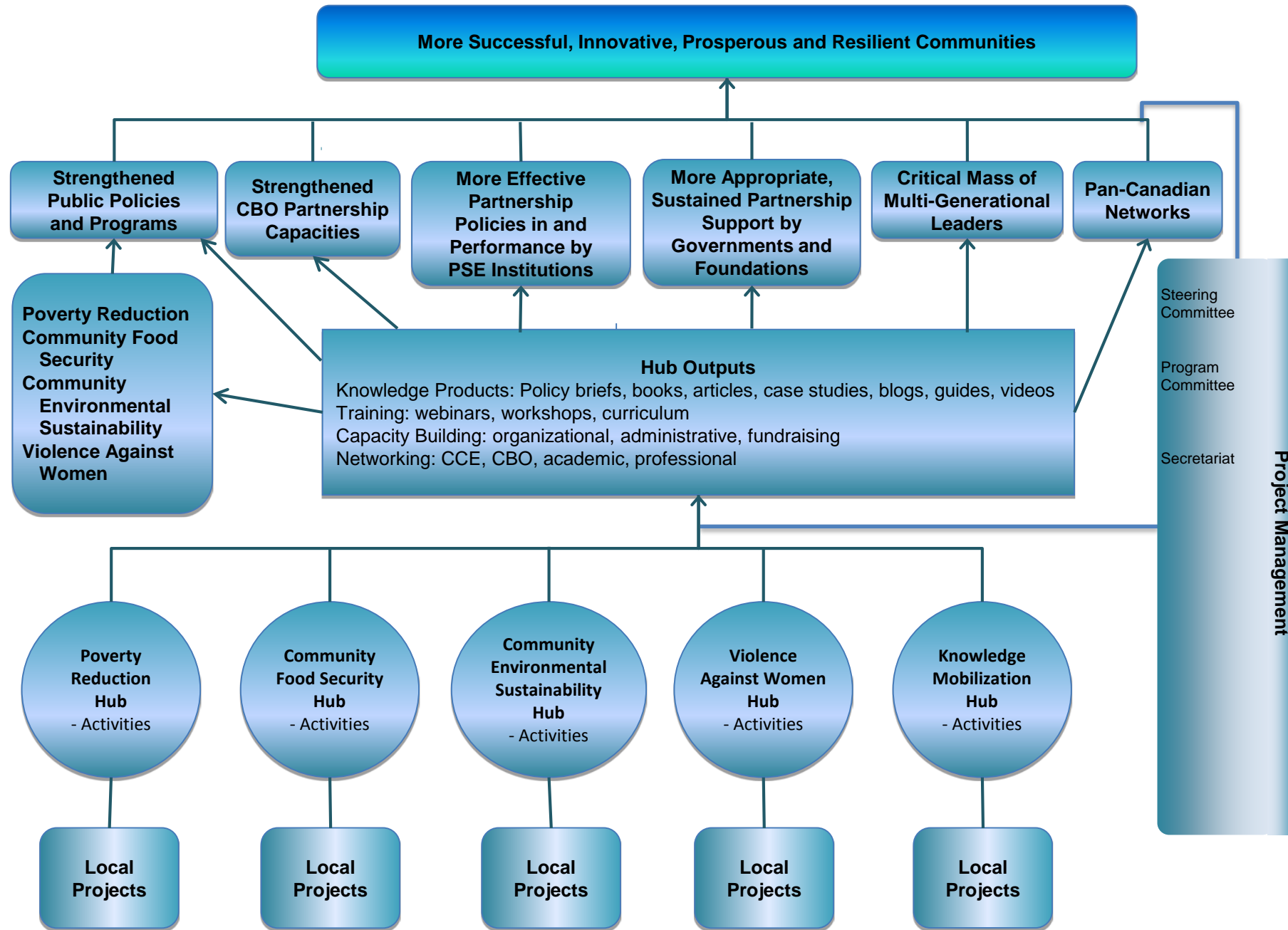


CFICE Research Question

How can Community Campus Engagement be designed and implemented to maximize value for nonprofit community based organizations (CBO's)?

- **Scale and replication**
- **CBO definition, evaluation, and use of Community Campus Engagement (CCE)**
- **CBO control or shared control**
- **Governance, evaluation, feedback, course design**
- **Measuring impacts for community based organizations**
- **Ethical issues**





What's in a theory?

Evaluation framework for CFICE which is infinitely flexible and versatile:

- **Theory of Change (adopted and translated by Hubs)**
 - Emergent Theory of Change from Communities (Hubs)
 - Macro Theory of Change for entire project (Steering Committee)
- **Developmental evaluation**
- **Critical theory**



What's in a theory?

- Level 1: To the *overall non-profit intervention, organization or network* within which the community-campus partnership has been formed
- Level 2: To the *community-campus partnership* itself
- Interaction between L1 and L2: To the *contribution* of the partnership to the goals of the non-profit organization and other features of that *relationship*



What's in a theory?

As networks evolve, we should not lose sight of collective impacts and policy changes, even in early stages of project

- This means regarding the specific ways in which inequality is represented at each level of the project

Who has power in each research partnership?

- Well funded graduate students
- Community partners
- Tenured professors
- University administration
- Other funders, donors and partners of CFICE



Policy shifts in an age of Austerity

- Envisioning policy changes with origins in community networks
- Social change may look very different from within the perspective of each Hub, but we are also heading towards many common policy goals:
 - addressing large scale economic inequalities through systems change (99% and 1%)
 - shifting dynamics of power in University Policy
 - smoothing administrative hindrances to funding community based work with Government funding partners (SSHRC)
 - finding appropriate spaces for tracking successes / failures in policy change (Federal, Municipal levels)



Poverty Reduction Hub

Karen Schwartz, Carleton University
Liz Weaver, Vibrant Communities Canada
Co-Chairs

www.vibrantcommunities.ca



Poverty Reduction Hub Partners

**Hamilton Roundtable
for Poverty Reduction** | **MAKING
HAMILTON**
the best place
to raise a child.

McMaster
University 

 **Opportunities**
WATERLOO REGION
MOBILIZING SOLUTIONS TO POVERTY

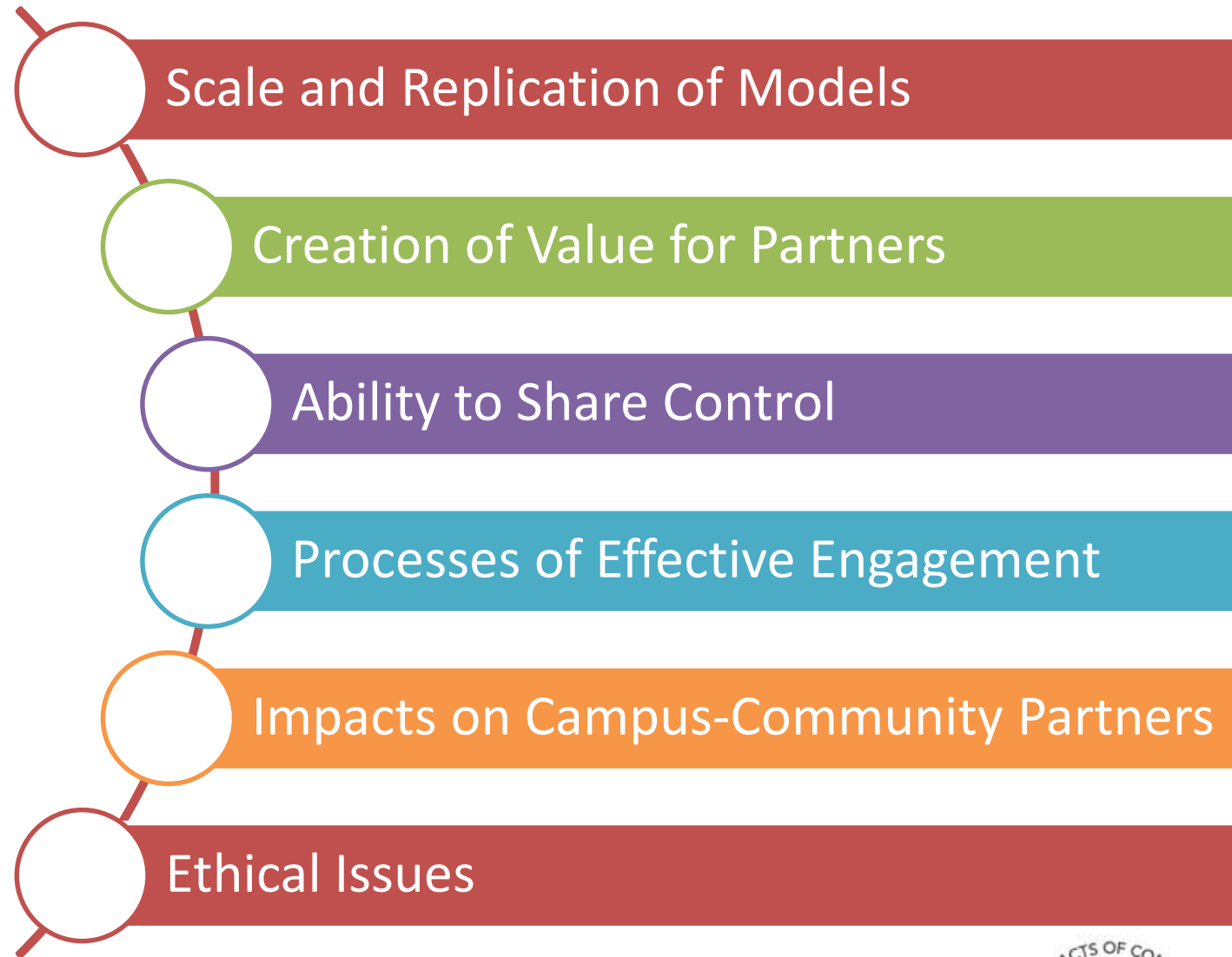
LAURIER 
Inspiring Lives!


Vibrant
SAINT JOHN

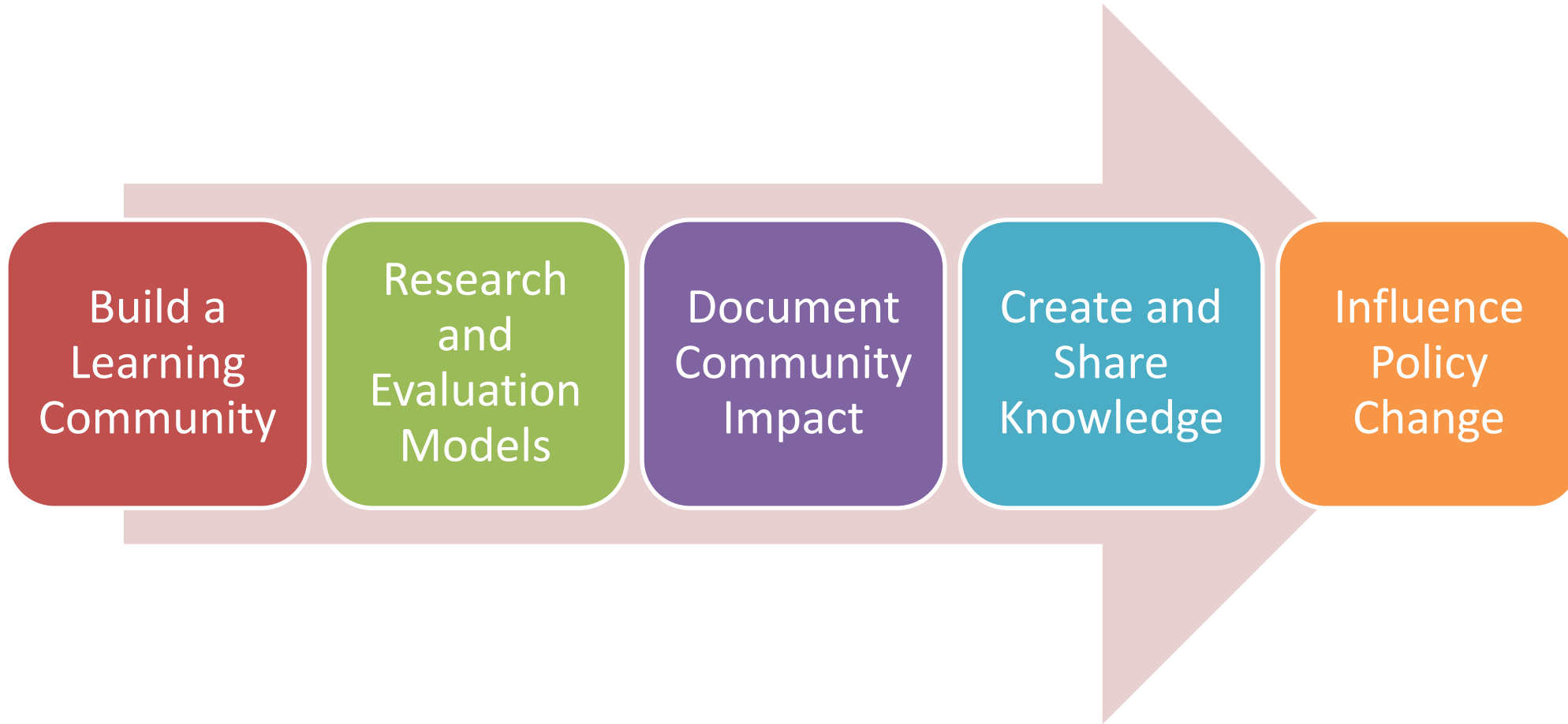

UNB
Saint John



CFICE Research Sub-Themes



Poverty Reduction Hub Outcomes





Living Wage
Research



Perceptions
of Poverty



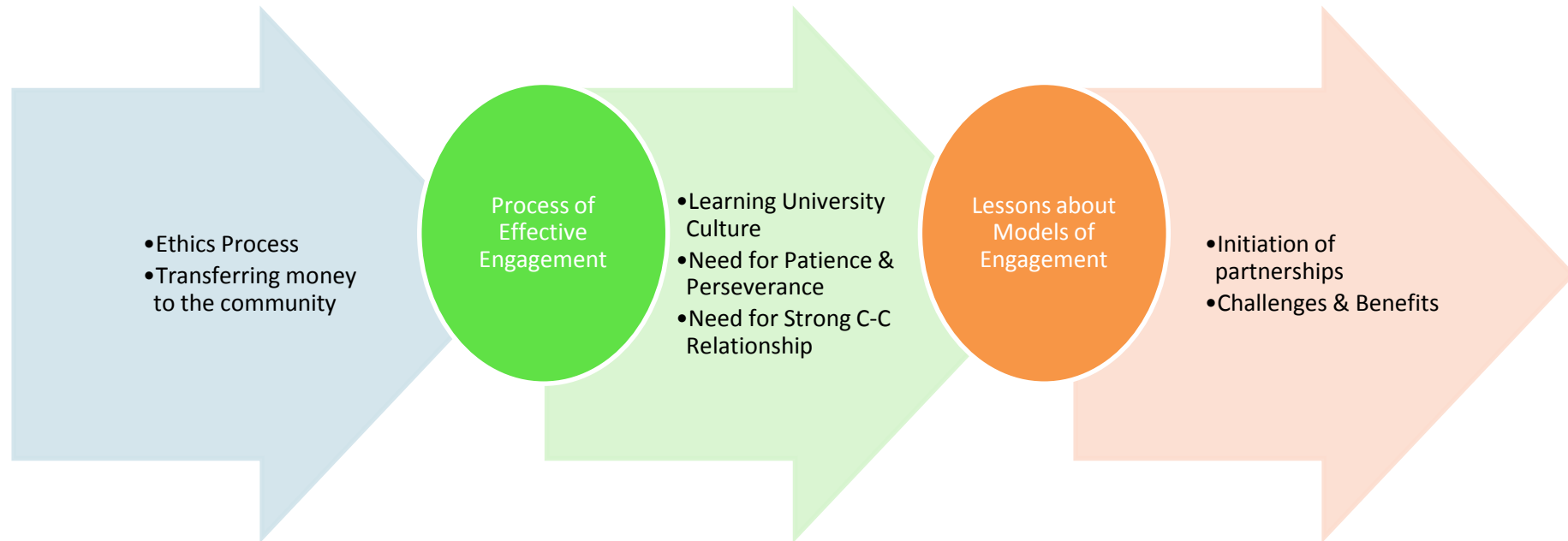
Impact of
Mentoring



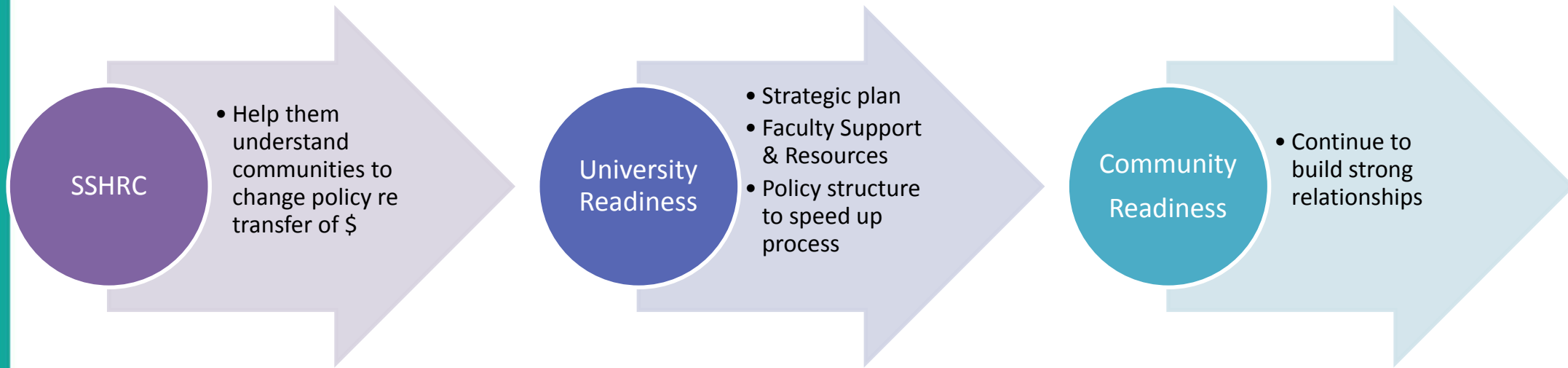
Models of
Collaboration

2012-2013 Poverty Hub Projects

What our hub has learned: Relationship, Relationship, Relationship



CCE Contributions to New Policies

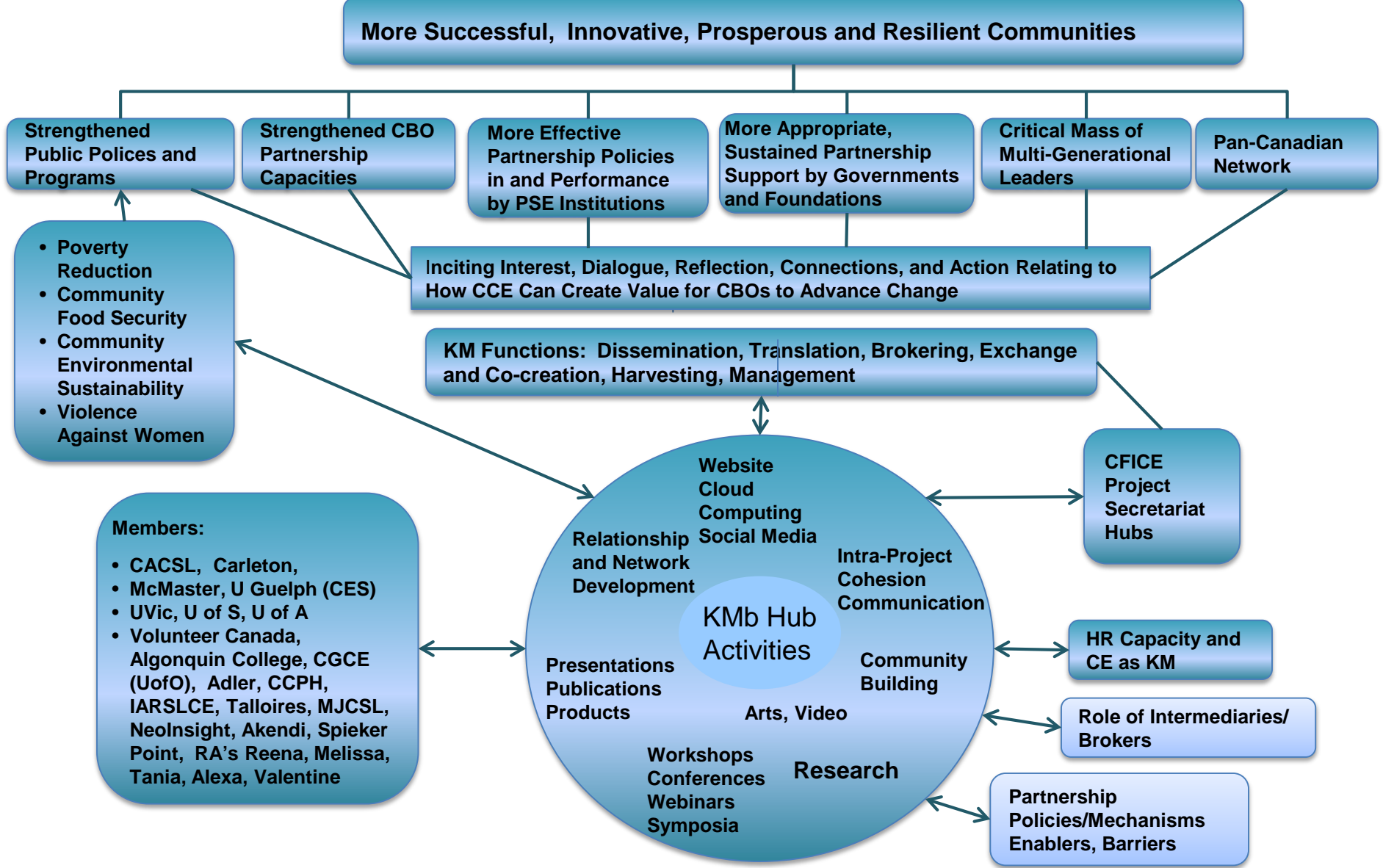


CFICE Knowledge Mobilization Hub

Co-leads: Elizabeth Whitmore
Geri Briggs



KMb Hub Theory of Change



Starting the Conversation

Create Dialogue:

- Share your experiences and learning
- Share what we're doing and learning

Connect with us:

[Website: www.thecommunityfirst.org](http://www.thecommunityfirst.org)

Blog: [CFICE To Say](#)

Online Dialogue: [CFICE Forum](#)

Twitter: [@CFICECan](#)





CFICE Community Food Security Hub

l'Association
canadienne des études
sur l'alimentation



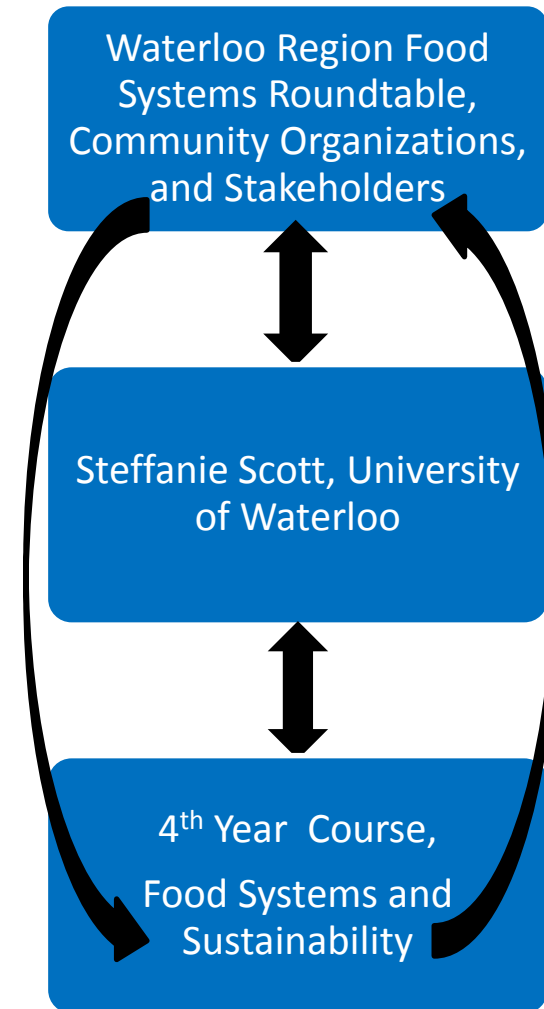
Canadian
Association for
Food Studies



Models of Community-University Partnerships

Model #1

University of Waterloo



Model #2

Region of Waterloo Public Health





So What Have we learned?

Community-university engagement can be enhanced through an 'in community' perspective based on complex adaptive systems principles of Contextual Fluidity



Timelines

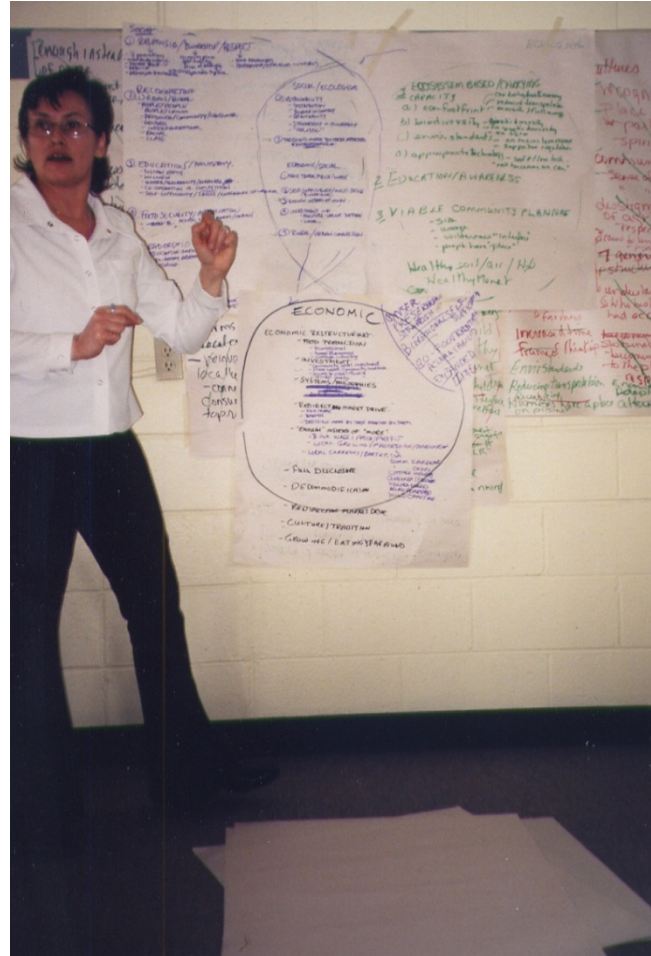


"If something is really a community priority, people will give it the time it needs to do it properly which sometimes means it will happen over a long time. Artificial, imposed timelines can be a problem- people feel like they have no control and they'll leave ."

-Ray Morton, Central Coast Eulichan Project and Gathering, Nuxalk Nation



“Community First” unpacked:



- First task is to build community among partners
- Ask questions about power – eg. perceived level of university access to power/information
- Community institutions as partners: hierarchies both within and between partners
- Perceived power imbalance fosters distrust (esp. in marginalized communities).

Recognize the different interests and goals, including those embedded in the funding

- SSHRC purpose is hiring graduate students
- This can be a problem for community organizations whose work requires nuanced handling

Negotiate the research questions on basis of both community priority “Community First” - but also the expertise available from the university partner (and community members too)



When we start to operate on the basis of 'power from below' we are moving from the more apolitical interpretation of 'food security' to the more directly political proposals of food sovereignty, not just within Indigenous communities but more generally.

All of this is in effect a description of the way in which we have developed /operated our Theory of Change.



Our Partners



This research was supported by the Social Sciences and Humanities Research Council of Canada.

