

Being Continued: Social Economy Research in Canada

Community First: Impacts of Community Engagement

Relevance to policy and practice in CED and
the Social Economy



Ted Jackson and Geri Briggs
CFICE, Carleton University,
April 18, 2013



Social Sciences and Humanities
Research Council of Canada

Conseil de recherches en
sciences humaines du Canada



CFICE – Community First: Impacts of Community Engagement



Project Goal:

CFICE aims to strengthen Canadian communities through action research on best-practice community-campus engagement

Research Question: How can community-campus engagement be designed and implemented in ways that maximize the value created for non-profit community-based organizations?



Community First: Impacts of Community Engagement



Research Hubs:

- Poverty Reduction (Vibrant Communities)
- Community Food Security (Food Secure Canada)
- Community Environmental Sustainability (Trent Centre)
- Violence Against Women (Elizabeth Fry)
- Knowledge Mobilization (CACSL)

Co-Management:

- Steering Committee
- Program Committee
- Research Hubs
- Secretariat

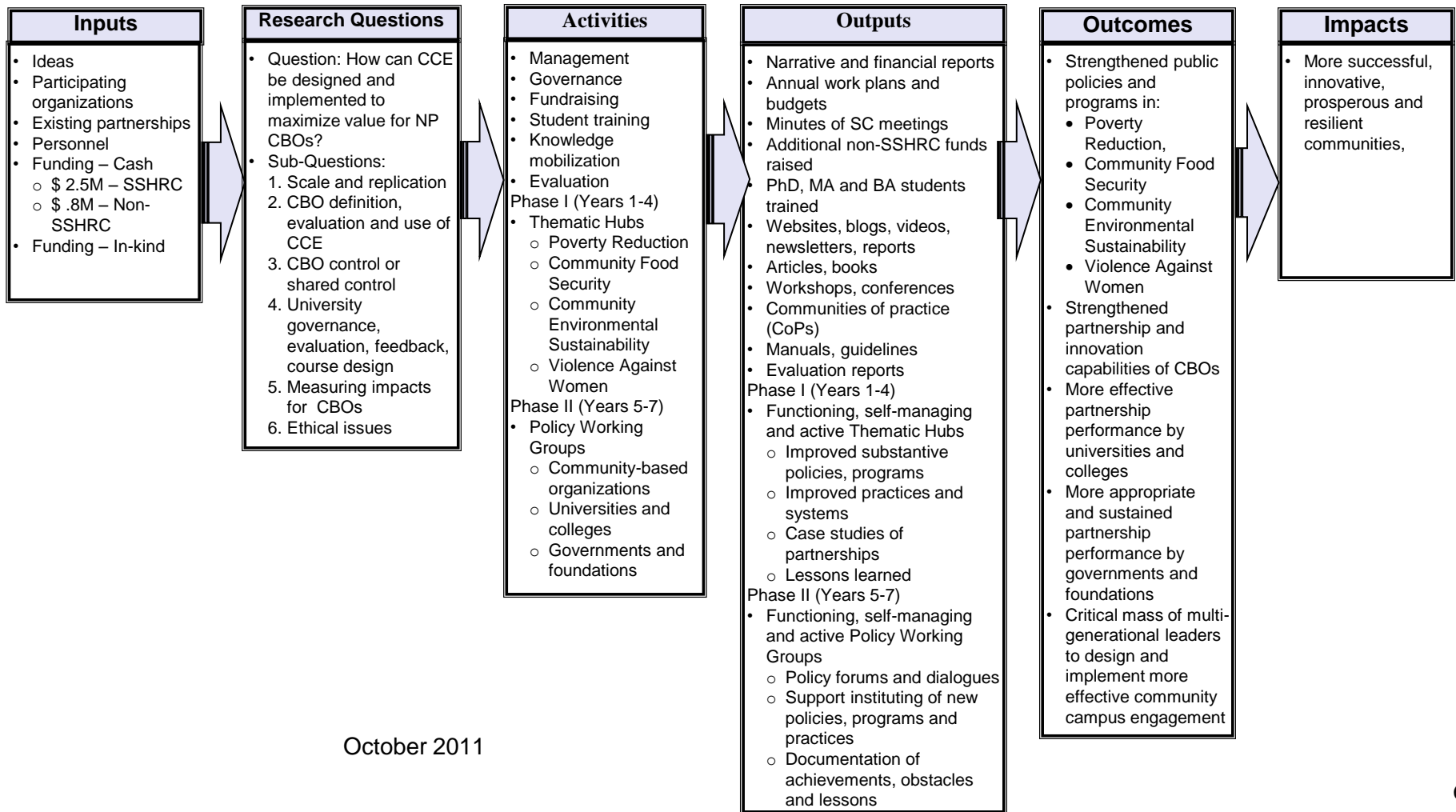


Checklist of CFICE Research Questions

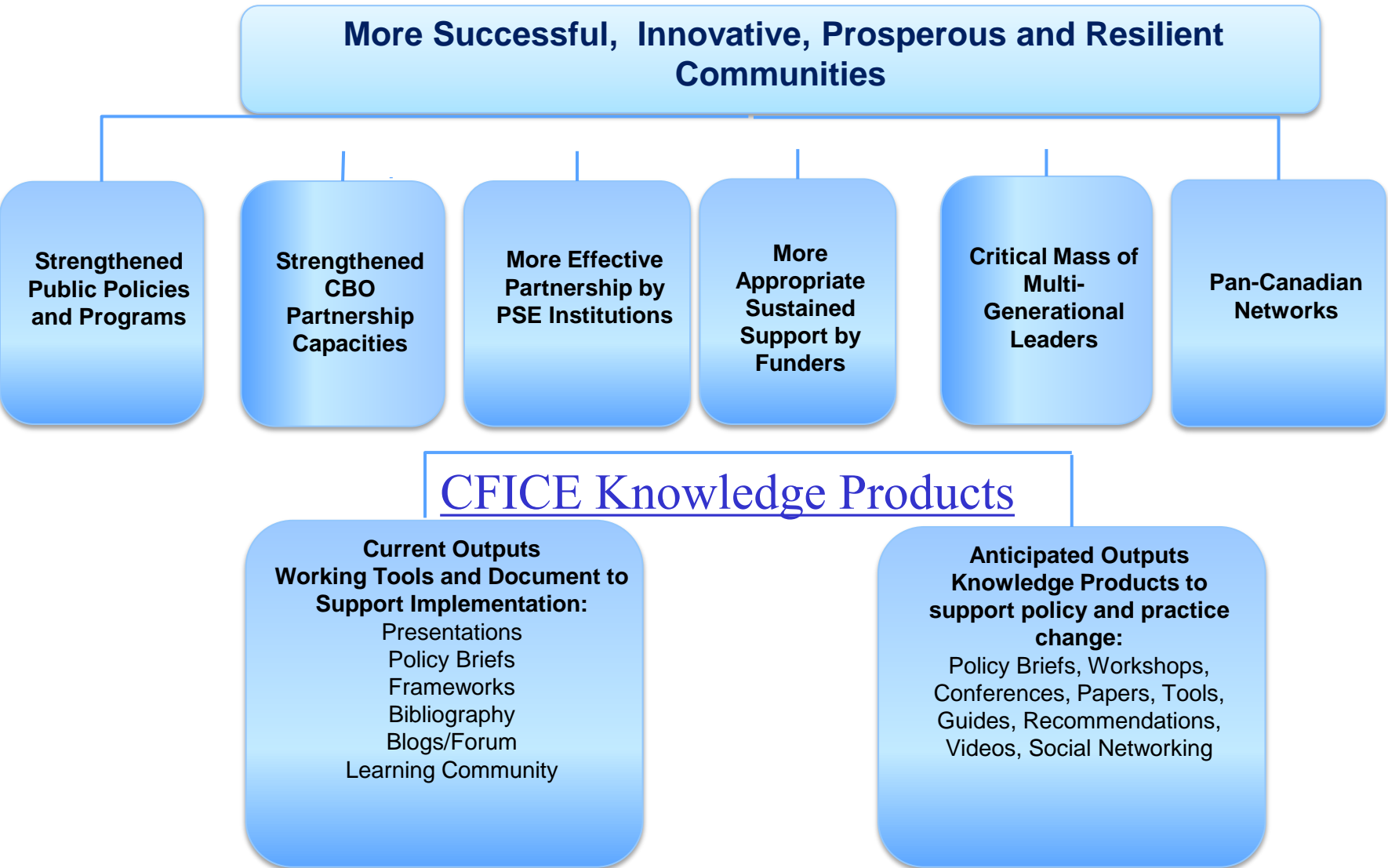


- *Overall:* How can community-campus engagement (CCE) be designed and implemented to maximize value for NP CBOs?
- *Sub-Questions:*
 - Scale and replication
 - CBO definition, evaluation and use of CCE
 - CBO control or shared control of the process
 - University governance, evaluation, feedback, course design
 - Measuring impacts for CBOs
 - Ethical issues

CFICE Logic Model



Current and Anticipated Outputs



Hub Projects, 2012-2013



- **Poverty Reduction Hub**
 - Societal Attitudes Toward People Living in Poverty- Opportunism Waterloo
 - Evaluate the impact of community-campus engagement in the Promise Partnership (UNB)
 - Hamilton Round Table for Poverty Reduction-Shared leadership model
- **Community Food Security Hub**
 - Cross-Cultural Food Networks: Inclusive Food Security Networks to Support Indigenous and Non-Indigenous Communities (Indigenous Food Network)
 - Models of Community-University Collaboration in the Waterloo Region Food System- document models of CCE
 - Cross Cultural Food Networks
- **Community Environmental Sustainability Hub**
 - Community-University Partnerships in Strategic Planning (Halliburton Highlands Land Trust)
 - Regional Approaches to Environmental, Social and Economic Innovation (COIN, U-Links)
 - Potential for “Deep Green” Development of the Oblate Lands in Old Ottawa East (SLOE)
- **Knowledge Mobilization Hub (2013-2014)**
 - Regenerating Community Sustainability through Student Engagement (CCE as KM)
 - Role of Intermediaries in CCE (Volunteer Canada, Kitchener-Waterloo, U of O)
 - Impact of CCE on HR policies and practices (U of S, U of A, Spiekerpoint)
 - CCE as Knowledge co-creation and exchange (UVic and United Way)



Possible Links Between CFICE Research and CED/Social Economy



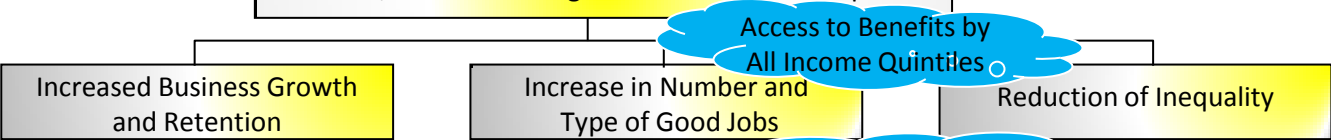
- Social enterprise and CED as components of poverty reduction strategies
- Poverty reduction policies--living wage, affordable housing, affordable transportation, etc--and CED/SE
- Affordable, healthy and sustainable food for low-income, immigrant and Aboriginal Canadians
- Green enterprise and deep green land development
- Sustainable procurement by universities and colleges
- Training and workforce programs for women survivors of violence
- New forms of knowledge production and dissemination for policy and institutional change
- New forms of financing for community-based organizations in an era of austerity



Economic Development - Theory of Change

- Social Outcomes
- Reduced Poverty
 - Reduced Crime
 - Expanded Social Infrastructure
 - Better Environmental Protection
 - Larger Tax Base

Inclusive, Sustainable Regional Economic Development



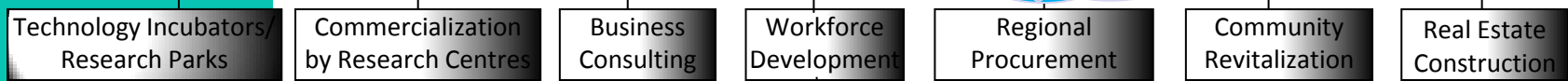
Access to Benefits by All Income Quintiles

Entrepreneurs/Employees Must Be Incented to Create and Sustain Good Jobs



Critical Mass of Business Start-Ups, New Patents, Employer Innovation and Competitiveness, Cluster Growth, Skilled Human Capital and Engagement of Marginalized Groups

Macro Conditions Must Be Supportive



Partnerships with Businesses, Economic Development Corporations, Non-Profits, Governments, Research Institutions, Business and Labour Associations, Social Organizations

Emphasis on Creation of Social/ Environmental Innovation

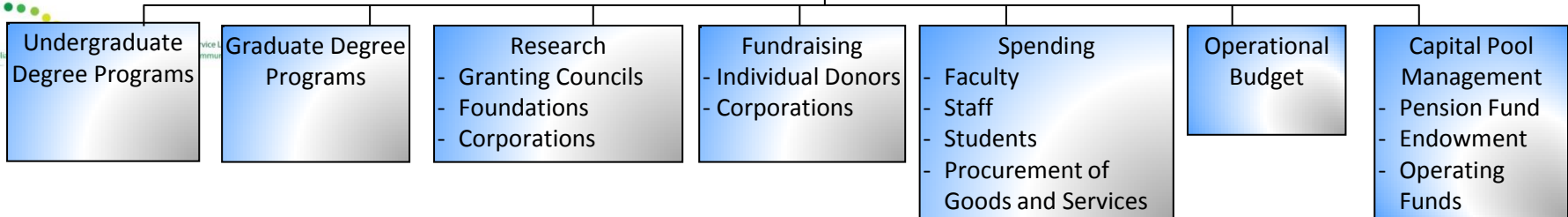
Need to Focus on Leading Clusters

Preference for Regional Suppliers

Find Public and Private Partners



University Programming and Administration



How to Get Involved



- Help get the CFICE learning community started:
 - Share your stories, results, insights, events (CFICE to Say)
 - Participate in and instigate conversations in the CFICE forum
 - Submit suggestions for the bibliography
 - Tell us about related research underway
 - Follow us on Twitter CFICECan

- Contact us: edward_jackson@carleton.ca
geri_briggs@carleton.ca

www.thecommunityfirst.org

