

CRCJ 3001a: Quantitative Research Methods in Criminology
Fall 2020

Course: CRCJ 3001a

Term: Fall 2020

Day & Time: Thursday, 11:35am – 2:25pm EST

Course prerequisites: *CRCJ 1000 and third year standing in the B.A. Honours program in Criminology and Criminal Justice*

Instructor: Logan Ewanation

- Office Hours: Zoom sessions by appointment
- E-mail: logan.ewanation@carleton.ca
- Telephone: n/a

TA Information:

- Natasha Azoulay
- natashaazoulay@cmail.carleton.ca
- Office hours:
 - TBD

Please note, you MUST use your Carleton email address in all correspondence with the instructor.

You may need special arrangements to meet your academic obligations during the term. For an accommodation request, the processes are as follows:

Pregnancy obligation

Please contact your instructor with any requests for academic accommodation during the first two weeks of class, or as soon as possible after the need for accommodation is known to exist. For more details, visit the Equity Services website: <http://carleton.ca/equity/wp-content/uploads/Student-Guide-to-Academic-Accommodation.pdf>

Religious obligation

Please contact your instructor with any requests for academic accommodation during the first two weeks of class, or as soon as possible after the need for accommodation is known to exist. For more details, visit the Equity Services website: carleton.ca/equity/wp-content/uploads/Student-Guide-to-Academic-Accommodation.pdf

Academic Accommodations for Students with Disabilities

If you have a documented disability requiring academic accommodations in this course, please contact the Paul Menton Centre for Students with Disabilities (PMC) at 613-520-6608 or pmc@carleton.ca for a formal evaluation or contact your PMC coordinator to send your instructor your Letter of Accommodation at the beginning of the term. You must also contact the PMC no later than two weeks before the first in-class scheduled test or exam requiring accommodation (if applicable). After requesting accommodation from PMC, meet with your instructor as soon as possible to ensure accommodation arrangements are made. carleton.ca/pmc

Survivors of Sexual Violence

As a community, Carleton University is committed to maintaining a positive learning, working and living

environment where sexual violence will not be tolerated, and is survivors are supported through academic accommodations as per Carleton's Sexual Violence Policy. For more information about the services available at the university and to obtain information about sexual violence and/or support, visit: carleton.ca/sexual-violence-support

Accommodation for Student Activities

Carleton University recognizes the substantial benefits, both to the individual student and for the university, that result from a student participating in activities beyond the classroom experience. Reasonable accommodation must be provided to students who compete or perform at the national or international level. Please contact your instructor with any requests for academic accommodation during the first two weeks of class, or as soon as possible after the need for accommodation is known to exist. <https://carleton.ca/senate/wp-content/uploads/Accommodation-for-Student-Activities-1.pdf>

For more information on academic accommodation, please contact the departmental administrator or visit: students.carleton.ca/course-outline

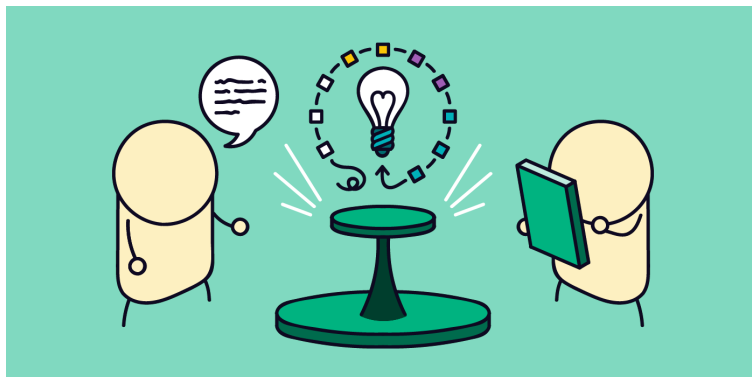
COURSE DESCRIPTION:

This course offers students a general introduction to the principles and practices involved in the quantitative research process. Together, we will be discussing and reflecting upon a variety of topics, including defining and measuring constructs, selecting participants, ethics in the research process, reliability and validity, and formulating a hypothesis. To be properly prepared for lecture each week, it is necessary for students to complete the relevant readings *before* class.

LEARNING OUTCOMES:

By the end of this course, students should be able to:

- Differentiate between related quantitative concepts
- Design basic research studies
- Summarize, interpret, and critically evaluate quantitative research



REQUIRED TEXTS:

Gravetter, F. J., & Forzano, L.A. B. (2018). *Research Methods for the Behavioral Sciences* (6th ed.). Wadsworth-Cengage Learning. ISBN-13: 978-1-305-10413-6

Older versions of the textbook will likely work fine.

COURSE WEB PAGE (CULEARN):

A website has been created for this course on CULearn (<https://carleton.ca/culearn/>). On the CULearn page, you will have access to your grades, the course syllabus, and lecture slides.

Lectures

Lectures will be delivered in the form of a Zoom meeting, during the allotted course time (Thursdays from 11:35am – 2:25pm EST). A link to access the lecture will be emailed to students the night before.

During the Zoom meeting, the lecture slides will be displayed on-screen, while I speak over them (closely mirroring the manner this course is typically delivered in-person). Using break-out groups in Zoom, lectures will also include small, un-graded group discussions and practice problems that are designed to engage you in the material and help you gauge your understanding of course content.

Lectures will be recorded and posted online through CULearn for students who are unable to attend the live lectures. Because lectures will be recorded, students may wish to turn their webcams off.

This class or portions of this class will be recorded by the instructor for educational purposes. These recordings will be shared only with students enrolled in the course.

Unauthorized student recording of classroom or other academic activities (including advising sessions or office hours) is prohibited. Unauthorized recording is unethical and may also be a violation of University policy. Students requesting the use of assistive technology as an accommodation should contact the [Paul Menton Centre](#). Unauthorized use of classroom recordings – including distributing or posting them – is also prohibited. Under the University's [Copyright Policy](#), faculty own the copyright to instructional materials – including those resources created specifically for the purposes of instruction, such as lecture slides, lecture notes, and presentations. Students cannot copy, reproduce, display, or distribute these materials or otherwise circulate these materials



without the instructor's written permission. Students who engage in unauthorized recording, unauthorized use of a recording, or unauthorized distribution of instructional materials will be referred to the appropriate University office for follow-up.

Office Hours/Meetings

Because we are unable to have in-person meetings, I won't be hosting regular office hours. If you would like to have a 1-on-1 meeting through Zoom, simply send me an email and we will find a time that works for both of us.

Course Schedule (Subject to change – any changes will be posted on CULearn and discussed in class)

Week	Date	Lecture Topic	Readings	Evaluation
Week 1	September 10	Course Introduction/Syllabus Review	N/A	
Week 2	September 17	Research Ideas and Hypotheses, APA Style	Chapter 2	Quiz 1 Due
Week 3	September 24	Defining and Measuring Variables	Chapter 3	Assignment 1 Due
Week 4	October 1	Sampling; Research Strategies; Validity	Chapter 5 - 6	
Week 5	October 8	Experimental Research, Between-Subjects Designs	Chapter 7 - 8	Quiz 2 Due
Week 6	October 15	Between-Subjects Designs; Within-Subjects Designs	Chapter 8 - 9	Assignment 2 Due
Week 7	October 22	Mid-Term (no lecture)		Mid-Term
ENJOY YOUR FALL BREAK!!				
Week 8	November 5	Nonexperimental and Quasi-Experimental Design	Chapter 10	
Week 9	November 12	Factorial Design	Chapter 11	Quiz 3 Due
Week 10	November 19	Correlational Design	Chapter 12	
Week 11	November 26	Descriptive Research	Chapter 13	Quiz 4 Due
Week 12	December 3	Statistical Analysis of the Data	Chapter 15	Quiz 5 Due
Week 13	December 10	Ethics in Research	Chapter 10	Article Critique Due

EVALUATION:

Below, I have included descriptions for the methods of evaluation for the course. On our first day of class, I will take time during lecture to go over these assignments and answer any immediate questions you have concerning them. I will also remind the class about every assignment closer to their individual due dates, where again you can ask me about any issues you are experiencing or things you need clarified. **Note that all components must be completed in order to achieve a passing grade.**



Quizzes	20%	see course schedule above
Assignments	5%	see course schedule above
Article Critique	15%	April 1
Mid-Term	25%	February 26
Final Exam	35%	Formal exam period (April 2020)

Quizzes – 20%

Throughout the semester, there will be **5** multiple-choice quizzes primarily based upon that week’s reading material. Each quiz will be worth 5% and will be completed online through CULearn. Quizzes will be made available online 1 week before they are due, and will be due at 11:30am EST on the respective day. Students will be able to complete the quiz anytime during the allotted timeframe.

You will be able to drop your lowest quiz grade. These quizzes are intended to keep you caught up on your readings, improve your comprehension of the material, and gauge your own understanding of course content. **There will be absolutely no makeup quizzes.**

Assignments – 5%

Throughout the semester, there will be *2 short* assignments in which you will need to apply course material to a series of questions. Each assignment will be worth 2.5%. Although assignments will be submitted online through the CULearn submission portal, students will often be given class time to work on them/ask questions. Specific information about the assignments will be provided during lectures.

Article Critique – 15%

Students will be required to read and critically evaluate two empirical journal articles using the information learned throughout the course. A 7 page paper following APA formatting will be expected. More information on the assignment will be provided on CULearn and during lectures.

Mid-Term – 25%

Halfway through the course, there will be a 3-hour online exam consisting of both multiple-choice and short-answer questions covering material from weeks 1-6. Questions will cover both the lecture and reading material.

Students will have be able to write the online exam anytime between October 19 at 8am EST and October 23 at 5pm EST

Those with appropriate medical documentation will have the opportunity to reschedule their mid-term (see below).

Final Exam – 35%

The final exam will be similar to the mid-term in that it will consist of multiple-choice and short-answer questions. *Although cumulative, the final will focus on material from weeks 8-12.* Questions will cover both the lecture and reading material



Standing in a course is determined by the course instructor subject to the approval of the Faculty Dean. This means that grades submitted by the instructor may be subject to revision. No grades are final until they have been approved by the Dean.

Policy on Late Assignments

Late assignments will be penalized at a rate of 10% of the assignment value per day or part day (i.e., if your final paper warrants a grade of 80%, but you hand it in one day late [i.e., anytime after 11:00 pm on the due date], your grade would be 70%). **After 3 days, I will no longer accept late assignments.** In the interest of being fair to all students, there will be no grace period. Therefore, it is strongly recommended that you leave yourself ample time to submit your assignment online in case of technological mishaps.

Proper documentation (i.e., a Medical Self-Declaration form) must be provided prior to the due date of an assignment in order to avoid late penalties. To be considered official, all extensions must be obtained in writing (over email) from me. If you are running into trouble, it is vital to approach me as soon as possible to discuss the situation. You must get permission for an extension *prior* to an assignment's due date.

Your top 4 quizzes will count towards your grade. Because you can drop one quiz, there will be NO chances for makeup quizzes.

POLICY ON MISSED EXAMS/QUIZZES

If you are unable to write the mid-term, you must email the TA and me within 24 hours of the deadline. In the email, include your name/student ID/reason for missing the exam. An opportunity to makeup the mid-term will only be provided to students with appropriate documentation. The makeup for the mid-term will occur within 1 week of the original mid-term dates. There will be limited time slots available for the makeup, so you will need to ensure that you arrange your schedule to meet these times. If you do not provide documentation, or miss the makeup exam, you will receive a grade of 0 for the mid-term.

Because you can drop your lowest quiz mark, there will be no makeup quizzes.

STATEMENT ON PLAGIARISM:

The University Senate defines plagiarism as “presenting, whether intentionally or not, the ideas, expression of ideas or work of others as one’s own.” This can include:

- reproducing or paraphrasing portions of someone else’s published or unpublished material, regardless of the source, and presenting these as one’s own without proper citation or reference to the original source;
- submitting a take-home examination, essay, laboratory report or other assignment written, in whole or in part, by someone else;
- using ideas or direct, verbatim quotations, or paraphrased material, concepts, or ideas without appropriate acknowledgment in any academic assignment;
- using another’s data or research findings;
- failing to acknowledge sources through the use of proper citations when using another’s works and/or failing to use quotation marks;
- handing in "substantially the same piece of work for academic credit more than once without prior written permission of the course instructor in which the submission occurs."

Plagiarism is a serious offence that cannot be resolved directly by the course’s instructor. The Associate Dean of the Faculty conducts a rigorous investigation, including an interview with the student, when an instructor suspects a piece of work has been plagiarized. Penalties are not trivial. They can include a final grade of "F" for the course.

Please don’t plagiarize, the consequences for doing so are severe and it is simply not worth it.

INTELLECTUAL PROPERTY:

Classroom teaching and learning activities, including lectures, discussions, presentations, etc., by both instructors and students, are copy protected and remain the intellectual property of their

respective author(s). All course materials, including PowerPoint presentations, outlines, and other materials, are also protected by copyright and remain the intellectual property of their respective author(s).

Students registered in the course may take notes and make copies of course materials for their own educational use only. Students are not permitted to reproduce or distribute lecture notes and course materials publicly for commercial or non-commercial purposes without express written consent from the copyright holder(s).