

**CRCJ 3001B: Quantitative Research Methods in Criminology**  
**Winter 2020**

Course: CRCJ 3001b

Term: Winter 2020

Day & Time: Wednesday, 8:35am – 11:25am

Room: Please check Carleton Central for current room location.

Course prerequisites: *CRCJ 1000 and third year standing in the B.A. Honours program in Criminology and Criminal Justice*

Instructor: Logan Ewanation

**Contact:**

Office: Dunton 2114

Office Hours: by appointment

E-mail: [logan.ewanation@carleton.ca](mailto:logan.ewanation@carleton.ca)

Telephone: n/a

**TA Information:**

TBD: - Please check CULearn for updated information regarding the TA

**Please note, you MUST use your Carleton email address in all correspondence with the instructor.**

---

You may need special arrangements to meet your academic obligations during the term. For an accommodation request, the processes are as follows:

**Pregnancy obligation**

Please contact your instructor with any requests for academic accommodation during the first two weeks of class, or as soon as possible after the need for accommodation is known to exist. For more details, visit the Equity Services website: <http://carleton.ca/equity/wp-content/uploads/Student-Guide-to-Academic-Accommodation.pdf>

**Religious obligation**

Please contact your instructor with any requests for academic accommodation during the first two weeks of class, or as soon as possible after the need for accommodation is known to exist. For more details, visit the Equity Services website: [carleton.ca/equity/wp-content/uploads/Student-Guide-to-Academic-Accommodation.pdf](http://carleton.ca/equity/wp-content/uploads/Student-Guide-to-Academic-Accommodation.pdf)

**Academic Accommodations for Students with Disabilities**

If you have a documented disability requiring academic accommodations in this course, please contact the Paul Menton Centre for Students with Disabilities (PMC) at 613-520-6608 or [pmc@carleton.ca](mailto:pmc@carleton.ca) for a formal evaluation or contact your PMC coordinator to send your instructor your Letter of Accommodation at the beginning of the term. You must also contact the PMC no later than two weeks before the first in-class scheduled test or exam requiring accommodation (if applicable). After requesting accommodation from PMC, meet with your instructor as soon as possible to ensure accommodation arrangements are made. [carleton.ca/pmc](http://carleton.ca/pmc)

---

---

**Survivors of Sexual Violence**

As a community, Carleton University is committed to maintaining a positive learning, working and living environment where sexual violence will not be tolerated, and its survivors are supported through academic accommodations as per Carleton's Sexual Violence Policy. For more information about the services available at the university and to obtain information about sexual violence and/or support, visit: [carleton.ca/sexual-violence-support](http://carleton.ca/sexual-violence-support)

**Accommodation for Student Activities**

Carleton University recognizes the substantial benefits, both to the individual student and for the university, that result from a student participating in activities beyond the classroom experience. Reasonable accommodation must be provided to students who compete or perform at the national or international level. Please contact your instructor with any requests for academic accommodation during the first two weeks of class, or as soon as possible after the need for accommodation is known to exist. <https://carleton.ca/senate/wp-content/uploads/Accommodation-for-Student-Activities-1.pdf>

For more information on academic accommodation, please contact the departmental administrator or visit: [students.carleton.ca/course-outline](http://students.carleton.ca/course-outline)

---

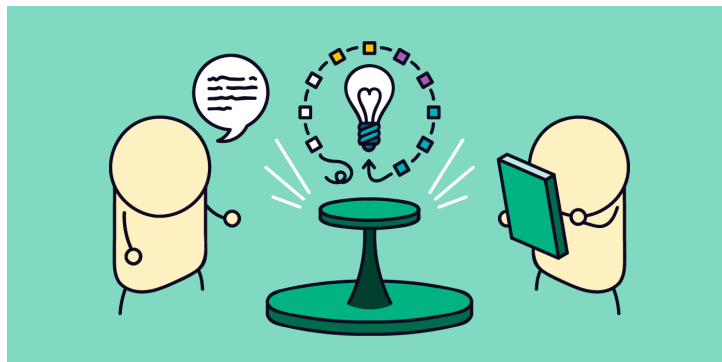
**COURSE DESCRIPTION:**

This course offers students a general introduction to the methods involved in quantitative research process. Together, we will be discussing and reflecting upon a variety of topics, including measuring and manipulating variables, reliability, validity, sampling, experimental, quasi-experimental designs and ethics. To be properly prepared for lecture each week, it is necessary for students to complete the relevant readings *before* class.

**LEARNING OUTCOMES:**

By the end of this course, students should be able to:

- Differentiate between related quantitative concepts
- Design basic research studies
- Summarize, interpret, and critically evaluate quantitative research



**REQUIRED TEXTS:**

Gravetter, F. J., & Forzano, L.A. B. (2018). *Research Methods for the Behavioral Sciences* (6<sup>th</sup> ed.). Wadsworth-Cengage Learning. ISBN-13: 978-1-305-10413-6

**Older versions of the textbook will likely work fine.**

**COURSE WEB PAGE (CULEARN):**

A website has been created for this course on CULearn (<https://carleton.ca/culearn/>). On the CULearn page, you will have access to your grades, the course syllabus, and lecture slides.

**Course Schedule** (Subject to change – any changes will be posted on CULearn and discussed in class)

<b>Week</b>	<b>Date</b>	<b>Lecture Topic</b>	<b>Readings</b>	<b>Evaluation</b>
Week 1	January 8	Course Introduction/Syllabus Review	N/A	
Week 2	January 15	Research Ideas and Hypotheses, APA Style	Chapter 2	<b>Quiz 1</b>
Week 3	January 22	Defining and Measuring Variables	Chapter 3	
Week 4	January 29	Sampling; Research Strategies; Validity	Chapter 5 - 6	<b>Assignment 1</b>
Week 5	February 5	Experimental Research, Between-Subjects Designs	Chapter 7 - 8	
Week 6	February 12	Between-Subjects Designs; Within-Subjects Designs	Chapter 8 - 9	<b>Quiz 2</b>
<b>ENJOY THE READING WEEK</b>				
Week 7	February 26	<b>Mid-Term (no lecture)</b>		<b>Mid-Term</b>
Week 8	March 4	Nonexperimental and Quasi-Experimental Design	Chapter 10	<b>Assignment 2</b>
Week 9	March 11	Factorial Design	Chapter 11	<b>Quiz 3</b>
Week 10	March 18	Correlational Design	Chapter 12	<b>Assignment 3</b>
Week 11	March 25	Descriptive Research	Chapter 13	<b>Quiz 4</b>
Week 12	April 1	Statistical Analysis of the Data	Chapter 15	<b>Article Critique</b>

## **EVALUATION:**

Below, I have included descriptions for the methods of evaluation for the course. On our first day of class, I will take time during lecture to go over these assignments and answer any immediate questions you have concerning them. I will also remind the class about every assignment closer to their individual due dates, where again you can ask me about any issues you are experiencing or things you need clarified. **Note that all components must be completed in order to achieve a passing grade.**



<b>Quizzes</b>	15%	see course schedule above
<b>Assignments</b>	15%	see course schedule above
<b>Article Critique</b>	15%	April 1
<b>Mid-Term</b>	20%	February 26
<b>Final Exam</b>	35%	Formal exam period (April 2020)

### **Quizzes – 15%**

Throughout the semester, there will be **4** multiple-choice quizzes primarily based upon the previous week's lecture and reading material. Each quiz will be worth 5%, and will be administered at the start of the respective class. You will be able to drop your lowest quiz grade. These quizzes are intended to keep you caught up on your readings, improve your comprehension of the material, and gauge your own understanding of course content.

### **Assignments – 15%**

Throughout the semester, there will be 3 short assignments in which you will need to apply the recently covered course material to a series of questions. Each assignment will be worth 5%. Although assignments will be submitted online through the CULearn submission portal, students will often be given class time to work on them/ask questions. Specific information about the assignments will be provided during lectures.

### **Article Critique – 15%**

Students will be required to read and critically evaluate two empirical journal articles using the information learned throughout the course. A 5-7 page paper following APA formatting will be expected. More information on the assignment will be provided on CULearn.

## **Mid-Term – 20%**

Halfway through the course, there will be a 3-hour exam consisting of both multiple-choice and short-answer questions covering material from weeks 1-6. Questions will cover both the lecture and reading material.

Students with appropriate medical documentation will have the opportunity to reschedule their mid-term (see below).

## **Final Exam – 35%**

The final exam will be similar to the mid-term in that it will consist of multiple-choice and short-answer questions. *Although cumulative, the final will focus on material from weeks 8-12.* Questions will cover both the lecture and reading material



Standing in a course is determined by the course instructor subject to the approval of the Faculty Dean. This means that grades submitted by the instructor may be subject to revision. No grades are final until they have been approved by the Dean.

### **Policy on Late Assignments**

Late assignments will be penalized at a rate of 10% of the assignment value per day or part day (i.e., if your final paper warrants a grade of 80%, but you hand it in one day late [i.e., anytime after 11:00 pm on the due date], your grade would be 70%). Assignments submitted after 3 days will receive a grade of zero. In the interest of being fair to all students, there will be no grace period. Therefore, it is strongly recommended that you leave yourself ample time to submit your assignment online in case of technological mishaps.

A doctor's note or other documentation must be provided prior to the due date of an assignment in order to avoid late penalties. To be considered official, all extensions must be obtained in writing (over email) from me. If you are running into trouble, it is vital to approach me as soon as possible to discuss the situation. You must get permission for an extension *prior* to an assignment's due date.

Because the quizzes will be held at the beginning of lecture, you must come to class in order to earn a grade for them. **Your top 3** quizzes will count towards your grade. Therefore, if you miss a class with a quiz, you can drop that quiz from your final grade. Because you can drop one quiz, there will be NO chances for makeup quizzes. Students with appropriate documentation who miss a quiz must email me *before* the quiz to schedule a makeup that will be held within 1 week of the original quiz date.

Once the quiz has begun, students will not be permitted to enter the class until the quiz is completed. This is primarily to ensure academic integrity. As such, if you come to class after the quiz has begun, you will receive a mark of 0 for that quiz.

### **POLICY ON MISSED EXAMS/QUIZZES**

If you are absent for our mid-term exam, you must email the TA and me within 24 hours. In the email, include your name/student ID/reason for missing the exam. An opportunity to makeup the mid-term will only be provided to students with appropriate documentation. The makeup for the mid-term will occur within 1 week of the original mid-term date. There will be only 1 time slot available for the makeup, so you will need to ensure that you arrange your schedule to meet this time. If you do not provide documentation, or miss the makeup exam, you will receive a grade of 0 for the mid-term.

Students with appropriate documentation who miss a quiz must email me *before* the quiz to schedule a makeup that will be held within 1 week of the original quiz date.

### **STATEMENT ON PLAGIARISM:**

The University Senate defines plagiarism as “presenting, whether intentionally or not, the ideas, expression of ideas or work of others as one’s own.” This can include:

- reproducing or paraphrasing portions of someone else’s published or unpublished material, regardless of the source, and presenting these as one’s own without proper citation or reference to the original source;
- submitting a take-home examination, essay, laboratory report or other assignment written, in whole or in part, by someone else;
- using ideas or direct, verbatim quotations, or paraphrased material, concepts, or ideas without appropriate acknowledgment in any academic assignment;
- using another’s data or research findings;
- failing to acknowledge sources through the use of proper citations when using another’s works and/or failing to use quotation marks;
- handing in "substantially the same piece of work for academic credit more than once without prior written permission of the course instructor in which the submission occurs."

Plagiarism is a serious offence that cannot be resolved directly by the course’s instructor. The Associate Dean of the Faculty conducts a rigorous investigation, including an interview with the student, when an instructor suspects a piece of work has been plagiarized. Penalties are not trivial. They can include a final grade of "F" for the course.

**Please don’t plagiarize, the consequences for doing so are severe and it is simply not worth it.**

**INTELLECTUAL PROPERTY:**

Classroom teaching and learning activities, including lectures, discussions, presentations, etc., by both instructors and students, are copy protected and remain the intellectual property of their respective author(s). All course materials, including PowerPoint presentations, outlines, and other materials, are also protected by copyright and remain the intellectual property of their respective author(s).

Students registered in the course may take notes and make copies of course materials for their own educational use only. Students are not permitted to reproduce or distribute lecture notes and course materials publicly for commercial or non-commercial purposes without express written consent from the copyright holder(s).