

COLLABORATIVE SPECIALIZATION IN **DATA SCIENCE**

Join our hub of data science experts and shape the future.

Carleton's Collaborative Specialization in Data Science is geared at graduate students and high-tech professionals who are interested in understanding how to analyze and use 'big data' sets collected by governments, NGOs and industry for purposes ranging from generating personal recommendations for online shopping to improving the efficiency of health care delivery or predicting national security threats.

Students will earn their degree from a participating master's program with a specialization in Data Science (or an MBA

concentration in Business Analytics) through research, project work or coursework that addresses a data science challenge.

More than 130 researchers are working on 'big data' projects at Carleton ranging from artificial intelligence and sensor data analytics to improving health care delivery.

Depending on availability, students may also gain real-world experience through **internships**.

PARTICIPATING PROGRAMS

Biology (thesis), Biomedical Engineering (thesis), Business (concentration), Cognitive Science (research project, thesis),

Communication, Computer Science (thesis), Economics (thesis or coursework), Electrical and Computer Engineering, Geography (MSc), Health Sciences, History, Information Technology (Digital Media), Psychology.

CAREER OPTIONS

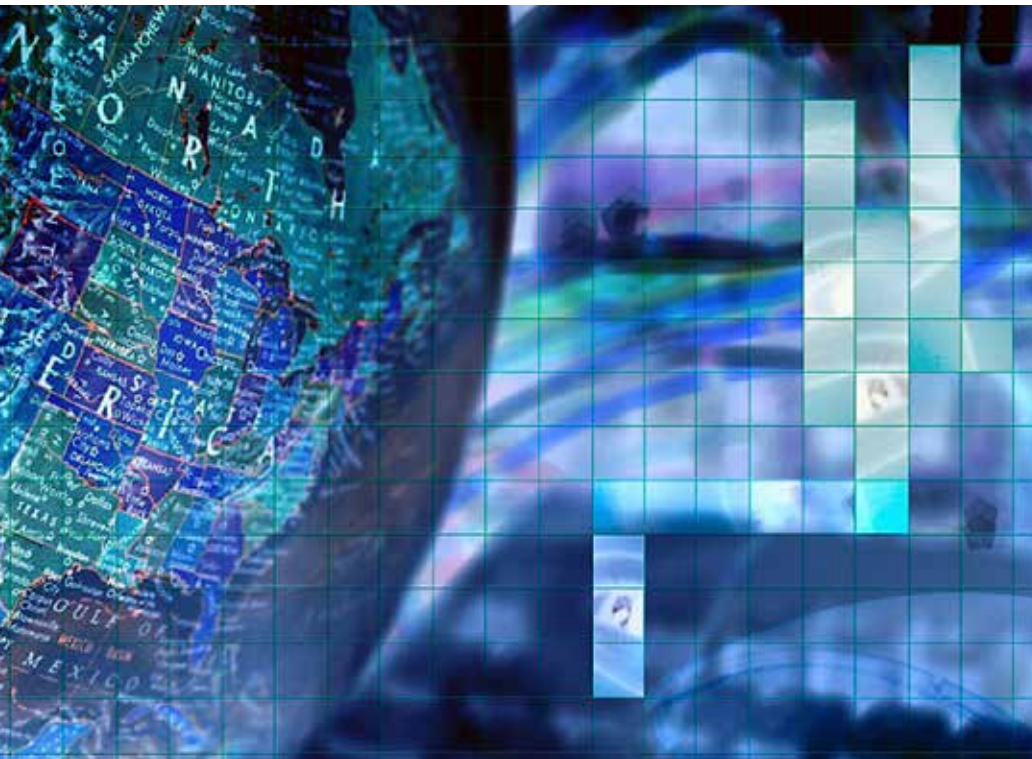
Over the next five years in North America, it is predicted that there will be more than four million jobs involving data science. Working with its partners and Ottawa's tech sector, Carleton is poised to become a national hub for data science research and training, educating a highly skilled workforce for local, national and international communities, and creating the next generation of IT leaders.

APPLICATION DEADLINE

The deadline dates for applications vary according to the deadline of each participating program. Those wishing to apply for the Collaborative Specialization in Data Science must indicate their intent when applying to their participating program (home degree).

ADMISSION REQUIREMENTS

Applicants must be admitted to one of the participating master's programs. Requirements vary according to which program a student chooses.



CONTACT INFO

613-520-2600 x8751
CUIDS@Carleton.ca

carleton.ca/datascience