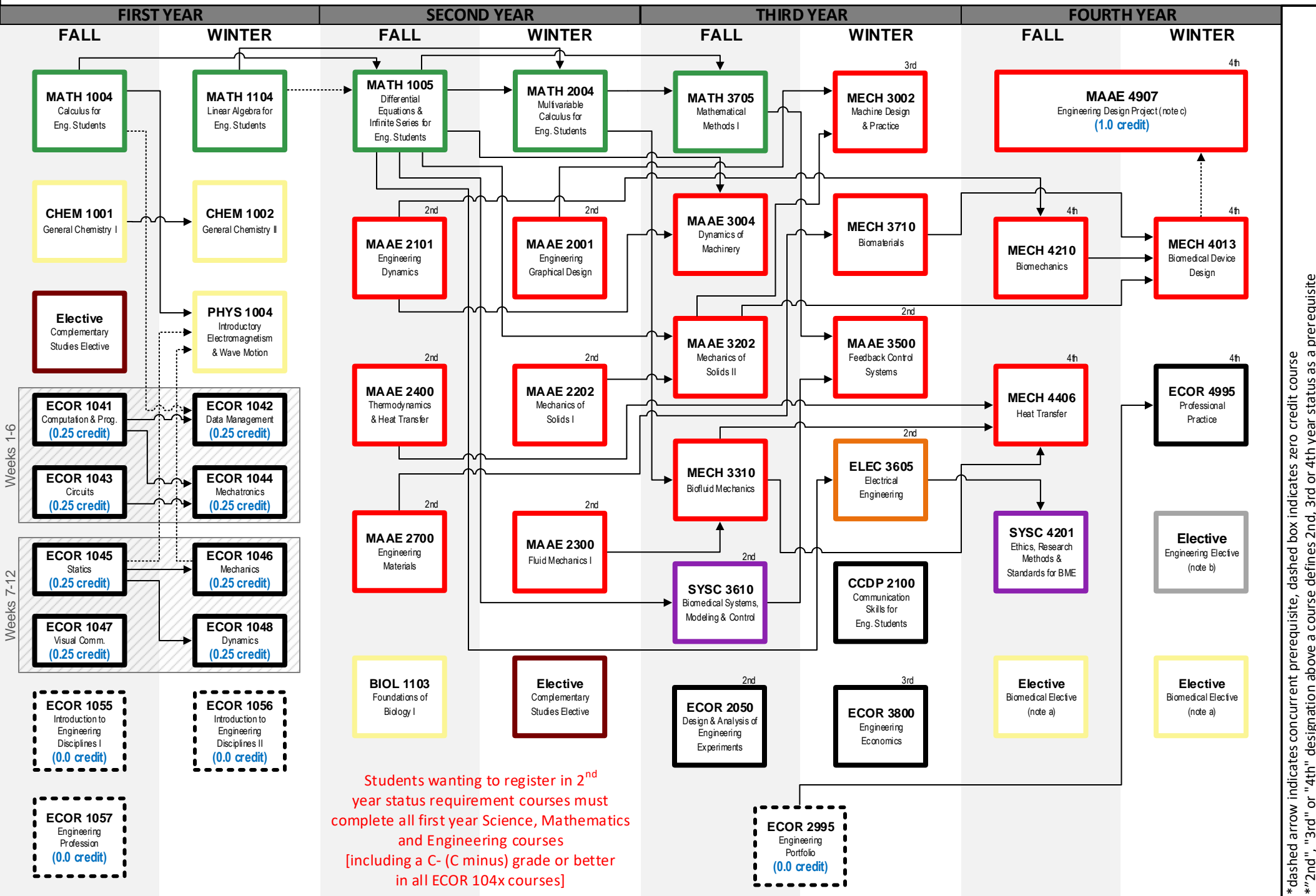


BIOMEDICAL & MECHANICAL ENGINEERING



Weeks 1-6

Weeks 7-12

Students wanting to register in 2nd year status requirement courses must complete all first year Science, Mathematics and Engineering courses [including a C- (C minus) grade or better in all ECOR 104x courses]

*dashed arrow indicates concurrent prerequisite, dashed box indicates zero credit course
 **"2nd", "3rd" or "4th" designation above a course defines 2nd, 3rd or 4th year status as a prerequisite

- Engineering Common Core
- Mech. & Aerospace Engineering
- Electronics
- Civil & Environmental Engineering
- Mathematics & Statistics
- Science (Physics, Chemistry, etc)
- Systems & Computer Engineering
- Electives

Notes:

(a) 1.0 credits in BIOL 2005, BIOL 2201 or CHEM 2203 or any BIOL, BIOC or CHEM course with permission from the department.

(b) 0.5 credits in MAAE, MECH or AERO course at the 4000-level or SYSC 4202 or SYSC 4203.

(c) Students must complete all first and second year courses, as well as 3.5 credits of third year courses (with the exception of Complementary Studies Elective) to enroll in MAAE 4907 (Engineering Design Project).