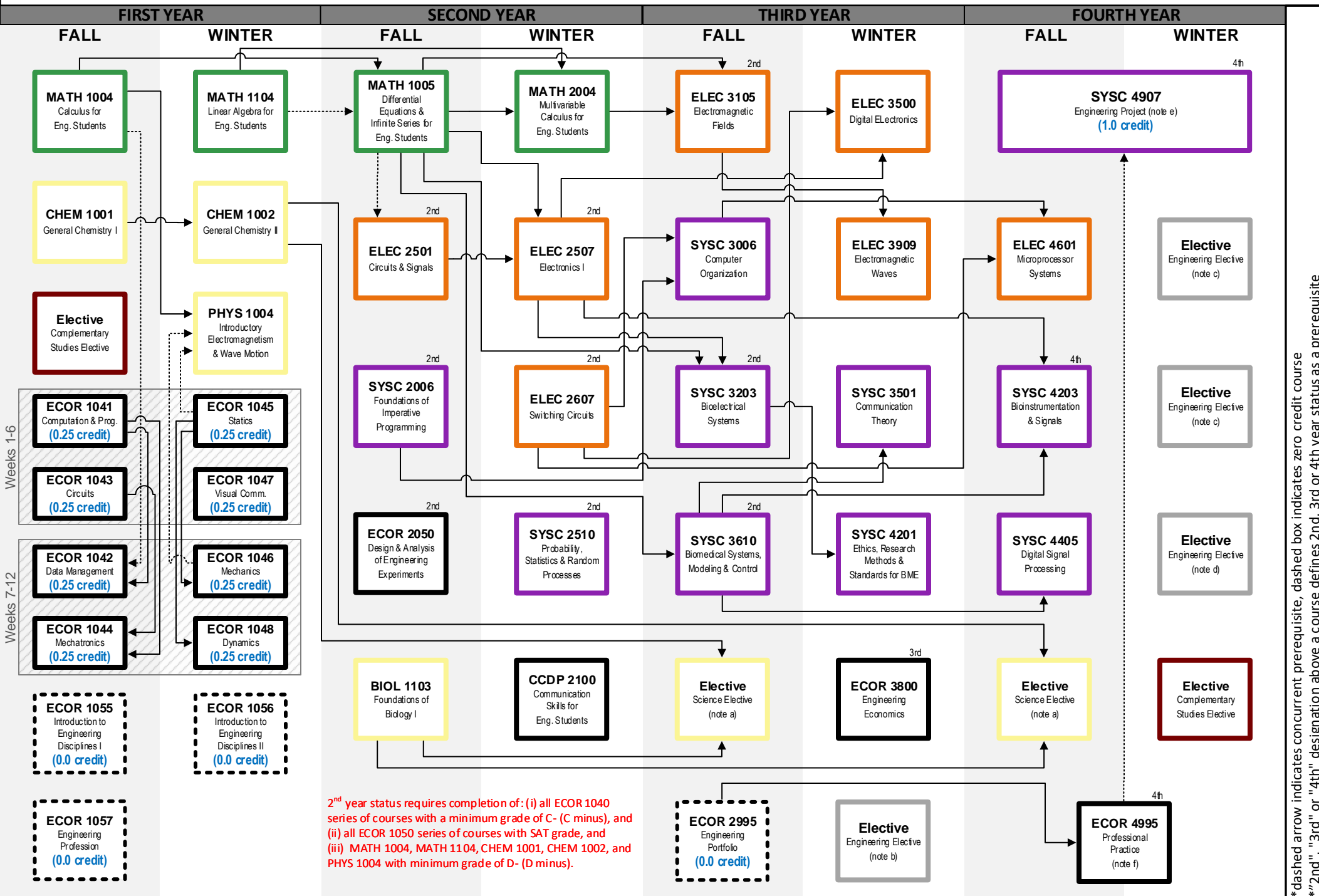


# BIOMEDICAL & ELECTRICAL ENGINEERING

Last modified: 06/16/2021  
catalog year: 2021-30



\*dashed arrow indicates concurrent prerequisite, dashed box indicates zero credit course  
\*\*2nd", "3rd" or "4th" designation above a course defines 2nd, 3rd or 4th year status as a prerequisite

Engineering Common Core
  Mech. & Aerospace Engineering
  Electronics
  Civil & Environmental Engineering
  Mathematics & Statistics

Science (Physics, Chemistry, etc)
  Systems & Computer Engineering
  Electives