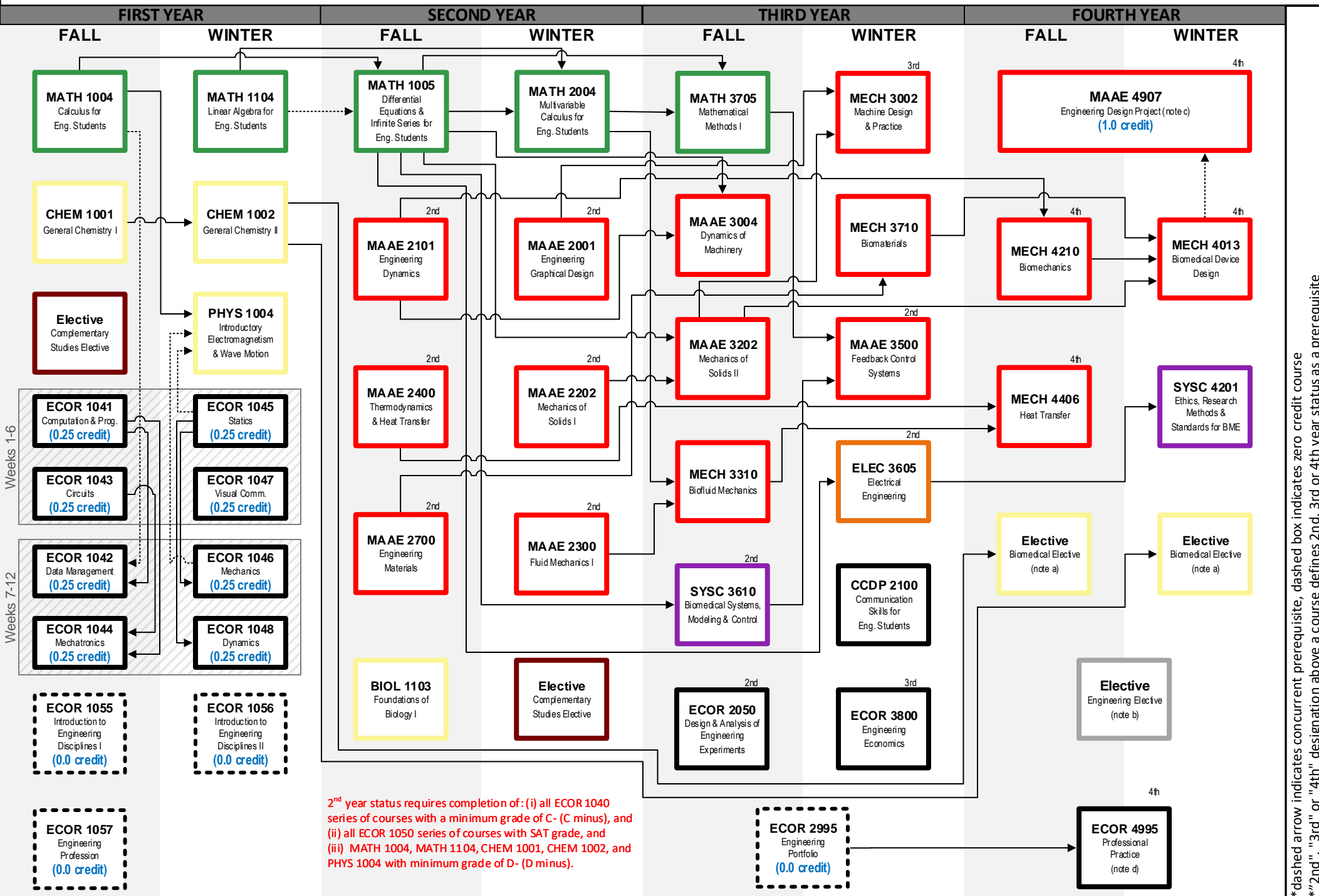


BIOMEDICAL & MECHANICAL ENGINEERING

Last modified: 06/16/2021
catalog year: 202130



Weeks 1-6
Weeks 7-12

- Engineering Common Core
- Mech. & Aerospace Engineering
- Electronics
- Arts and Social Sciences
- Civil & Environmental Engineering
- Mathematics & Statistics
- Science (Physics, Chemistry, etc)
- Systems & Computer Engineering
- Electives

Notes:

- (a) 1.0 credits in BIOL 2005, BIOL 2201 or CHEM 2203 or any BIOL, BIOC or CHEM course with permission from the department.
- (b) 0.5 credits in MAAE, MECH or AERO course at the 4000-level or SYSC 4202 or SYSC 4203.
- (c) Students must complete all first and second year courses, as well as 3.5 credits of third year courses (with the exception of Complementary Studies Elective) to enroll in MAAE 4907 (Engineering Design Project).
- (d) ECOR 4995 can be taken in Fall or Winter term, if elective options allow for it.

*dashed arrow indicates concurrent prerequisite, dashed box indicates zero credit course
**2nd", "3rd" or "4th" designation above a course defines 2nd, 3rd or 4th year status as a prerequisite