

**Carleton University
Fall/Winter 2019-2020
Department of English**

ENGL 3502B: British Literature from 1700-1914

Prerequisites: 3rd-year standing or permission of the department

W/F / 8:30-10:00

Location: *Please confirm location on Carleton Central*

Instructor: Janice Schroeder

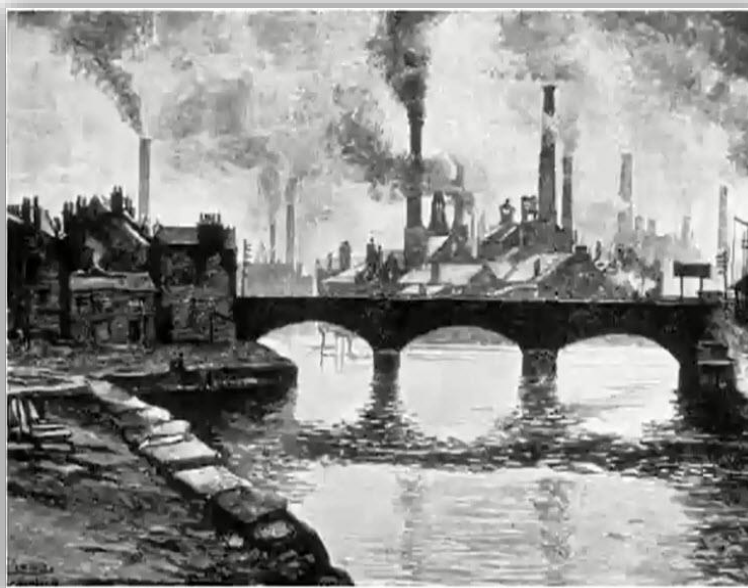
Email: janice.schroeder@carleton.ca

Office: 1924 Dunton Tower

Phone: use email

Office Hours: Fridays 10:00-11:00 or by appointment

Carleton University is located on unceded Algonquin territory.



Course Description

British literature from 1700-1914 is the literature of the Industrial Revolution. Much of this writing describes the human and environmental costs of rapid urbanization, land enclosures, and the mass production of consumables. It also documents the origins of environmentalism and ecological awareness. From eighteenth-century experimentation with pastoral poetry, to the

Romantic “nature poets” and their “discovery” of the natural world as a source of self-knowledge, to the feminization of land as “vulnerable” and in need of “protection,” to “waste literature” of the urban slums, to the de-centering of the human in Charles Darwin’s theories of evolution, to fin-de-siècle literature of global-imperial crisis, scholars are increasingly coming to regard the literary writing of this period as some of the most significant evidence we have of the human shaping of “nature” and the natural shaping of the “human.” This course explores these themes by introducing students to a range of British literary and cultural texts in a range of genres from the 18th century through the Romantic, Victorian, and pre-war periods. It also offers practice in basic methodologies of literary study, research, and the writing process.

Course Objectives

- Read a sample of British literature between approximately 1700 and 1914 covering a range of authors, genres, and styles of writing;
- develop an understanding of the social and cultural contexts that informed this literature, and how literature in turn shaped those contexts;
- cultivate a greater understanding of the formal dimensions of literary texts and why they matter;
- practice skills and increase vocabulary for analyzing and writing about literary texts of the past;
- improve skills and confidence in oral discussion;
- improve research and essay writing skills.

Text List

Broadview Custom Anthology (Broadview)—mandatory edition
 Mary Prince, *The History of Mary Prince* (Penguin)
 Elizabeth Gaskell, *North and South* (Oxford)
 Bram Stoker, *Dracula* (Broadview)

Required texts are available at **Haven Books, 43 Seneca (at Sunnyside – 613-730-9888)**

Writing Attentiveness

The Department of English has designated ENGL 3502 a “writing-attentive” course. That means that students in this course must

- Write at least one substantial essay each term in which they are expected to
 - develop an argument or thesis statement across each essay
 - develop complex ideas using correct and effective expression according to academic English practice
 - use and cite from primary texts appropriately
 - develop secondary research and citation skills
- Complete at least two supervised writing assignments in the course (tests, in-class essays, or formal examinations)

- Spend a portion of class time developing and improving essay writing skills and research essay skills

Teaching Approach

I teach this course using a combination of lecture, discussion, and in-class writing assignments. Come to class prepared to share your thoughts about the readings during class discussion or in small “think-pair-share” groups. In-class writing assignments are designed to help you articulate your responses to the reading material, to practice writing, and to develop skills related to the learning outcomes of the course. I strongly believe in writing as process that begins in the classroom. Everyone in this class, including me, is learning how to be a better interpreter of literary texts. I encourage a safe, respectful learning environment.

Course Assignments

The following assignments are **mandatory**. You must complete all of them in order to receive a grade for the course. You cannot pass the course if you do not complete all of the assignments.

- Two 3-4 page response essays, 1 per term (10% each)
- Two essay process journals in preparation for research essays (5% each)
- Two 8-page research essays, due end of term (15% each)
- In-class test, first term (10%)
- Final exam, second term: (20%)
- Participation/attendance/in-class writing exercises: (10%)

Participation and Attendance

Class participation will be evaluated as follows:

- Did you attend class regularly?
- Did you read the assigned texts before class?
- Did you complete in-class writing assignments* satisfactorily?
- Did you arrive with questions and comments about the reading?
- Did you respond to or engage with other students in class discussion?
- Did other students and/or the professor learn from your contributions?

*In-class writing assignments will take a variety of forms. They may be close reading assignments, impromptu 5-minute essays, learning self-assessments, lecture talk-backs, meetings with your writing, and/or small-group discussion papers. There may even be a reading quiz once in a while. I have a bunch of tricks up my sleeve, and all of these mini in-class assignments will factor into your participation grade, which will be an easy 10% for you if you show up regularly and prepared to work.

Class attendance is mandatory. I take attendance at the beginning of every class. If you arrive to class late and/or forget to sign the attendance sheet, it will appear as an unexplained absence on

your record. Regular attendance is a crucial component of your participation grade. If you don't show up to class, you are not participating, and therefore not completing one of the assignments. You must complete all of the assignments in order to pass the course. Spotty attendance and/or serial absences will result in an email from me and a request for a meeting. If there is no pattern of improvement after our meeting, you will receive a grade of zero on the participation assignment for the fall term. Five absences or more will lead to a remedial writing assignment which you will be required to complete if you want to pass the course.

It is extremely important that you come to class *prepared*: this means **bringing the textbook to class with you**, and questions/comments for discussion. I do regular spot checks to see who has the text in front of them in class.

Writing Assignments

There will be three types of formal writing assignments per term.

1. A 3-4 page response essay will ask you to develop an argument about a primary text in conjunction with a pre-assigned journal article or book chapter.
2. An 8-10 page research essay will require you to do your own secondary research and provide a list of works cited.
3. Your research essay must be accompanied by an essay process journal—a detailed account of your writing and research process that you are encouraged to work on throughout the term and submit before the writing workshops at the end of term.

Details on these assignments will be circulated separately and discussed in class well before the assignment deadlines.

I will post a document on cuLearn giving you an idea of what I look for on essay assignments (a grading rubric).

MLA

The MLA is the Modern Language Association, an international organization founded to promote the study and teaching of language and literature. The MLA publishes the *MLA Handbook for Writers of Research Papers*, now in its 8th edition. This book is our format bible and will be essential for you not only in this course but in all your English courses. It teaches you how to do things like present names and titles of works correctly, quote from sources, prepare a works cited list at the end of your paper, and use, evaluate, and document online sources. If you haven't already picked up a copy of the *MLA Handbook*, I **strongly encourage you** to do so. It is not available online. However, the Purdue Online Writing Lab (OWL) offers a helpful overview of the basics of MLA style requirements. (Google "Owl English Purdue MLA.") The MacOdrum Library also has resources on its website. Many/most databases, including JStor, also provide you with the correct journal article citation format for works cited lists in a separate tab.

We will have a brief in-class session on the basics of MLA in the fall term. Do not come to me at the last minute with questions about MLA style for your works cited list before an assignment is due. I am not the MLA. When you are in doubt, especially in the case of an unusual source, use your best judgment using the resources at your disposal and keep it consistent. The information is out there in multiple places and it is *your responsibility* to track it down and use it correctly. That is part of the assignment.

Assignment Submission: Your response essay, essay process journal, and research essay must be submitted via hard copy. In-class writing assignments must be completed and submitted **in class, no exceptions.**

Late assignments: For the essays, everyone gets a bank of 4 penalty-free days **per term** (“grace days”). A “day” is the 24-hour period that begins at 4:00 p.m. on the day the assignment is due in class. Once a student uses all 4 grace days, any essay they submit late receives an automatic zero. Special consideration may be given to students dealing with health or other issues.

- Note that the grace days apply only to the essays and **not** the essay process journals, which are due in hard copy to me on November 22 and March 25.
- I will keep track of your use of grace days by recording the date on which you submit your assignments, but you are also responsible for keeping track of the number of grace days you have left to use.
- If time is of the essence and you want to submit your paper to put a stop to using any further grace days, you need to save your essay as a PDF and email it to me, then print up a duplicate copy and submit it ASAP (either via the department drop box, office hours, or in class) since we can’t begin marking until the paper version is in hand. Note that the electronic and paper versions you submit must be **exact** duplicates; if there are any differences, I treat the day you submit the paper copy as the day you submitted the essay.

Course Policies

Electronics Policy

No laptop computers, cell phones, or e-readers are permitted in class except in certain circumstances. Please note that our classroom will be computer and device-free. Each week, two students will volunteer to take notes (on a laptop) for the entire class. Their notes will be posted on cuLearn after every class or by the end of each week. I need about four to six volunteers who can take notes on a rotational basis. Please speak to me after class or e-mail me if you are interested; you will receive additional credit at the end of term for your efforts. The only other students who will be permitted to use laptops will be those who have permission from the Paul Menton Centre. Otherwise, any students who want to take notes in class are more than welcome to use pen and paper. I have had this policy in place for a number of years and have received few complaints about it. I find the quality of class engagement is significantly higher when we don’t have the distraction of multiple screens in the classroom. For certain assignments, it will be helpful to have a laptop for use in class, but I will let you know in advance.

Course Copyright

I would like to remind you that my lectures and course materials, including power point presentations, outlines, and similar materials, are protected by copyright. I am the exclusive owner of copyright and intellectual property in the course materials. You may take notes and make copies of course materials for your own educational use. You may not and may not allow others to reproduce or distribute lecture notes and course materials publicly for commercial purposes without my express written consent.

Contacting me

I am available during my **office hour on Fridays from 10:00-11:00** to discuss any aspect of the course. If this time conflicts with your schedule, I would be happy to schedule an appointment with you. I will usually be available directly after this class ends on Wednesdays.

Email

I am available on email and I usually respond promptly. If I email you directly with a question or a concern, I expect you to respond. Please do not send me long-winded emails explaining why you were unable to attend class.

Etiquette

Please do not ask me to bring you up to speed on material we covered in class; it is your responsibility to attend class and/or consult the notes posted on cuLearn for any classes you miss. You may address me in your emails, and in person as Jan, Professor Schroeder, or Dr. Schroeder.

University Policies**Final Grades**

Standing in a course is determined by the course instructor subject to the approval of the Faculty Dean. This means that grades submitted by the instructor may be subject to revision. No grades are final until they have been approved by the Dean.

Completion of Course

Take careful note of Section 5.1 of the Academic Regulations in the Undergraduate Calendar: "To obtain credit in a course, students must satisfy the course requirements as published in the course outline."

Academic Integrity

The University Senate defines plagiarism as "*presenting, whether intentionally or not, the ideas, expression of ideas or work of others as one's own.*" This can include:

- reproducing or paraphrasing portions of someone else's published or unpublished material, regardless of the source, and presenting these as one's own without proper citation or reference to the original source;
- submitting a take-home examination, essay, laboratory report or other assignment written, in whole or in part, by someone else;
- using ideas or direct, verbatim quotations, or paraphrased material, concepts, or ideas without appropriate acknowledgment in any academic assignment;
- using another's data or research findings;

□ failing to acknowledge sources through the use of proper citations when using another's works and/or failing to use quotation marks;

□ handing in "substantially the same piece of work for academic credit more than once without prior written permission of the course instructor in which the submission occurs."

Plagiarism is a serious offence that cannot be resolved directly by the course's instructor. The Associate Dean of the Faculty conducts a rigorous investigation, including an interview with the student, when an instructor suspects a piece of work has been plagiarized. Penalties are not trivial. They can include a final grade of "F" for the course.

SUPPORT SERVICES & ACCOMMODATIONS

Writing Tutorial Service (WTS): The [WTS](#) offers students one-on-one, personalized assistance with academic writing, free of charge. To make an appointment for a 50-minute session, call 613-520-2600, ext. 1125, or visit in person at the Learning Support Services Desk on the 4th floor of the MacOdrum Library.

Learning Support Services (LSS): LSS offers students a variety of free services, including academic skills workshops and information sessions, and individualized assistance in the form of a tutor referral service and a supportive staff of Peer Helpers. To learn more about these services, visit LSS on the 4th floor of the MacOdrum library, contact them by phone at (613) 520-2600, x.1125, or visit [online](#).

Foot Patrol: The Foot Patrol is a student-run, volunteer-based service available to Carleton students, free of charge. Its patrollers will escort you safely to your destination, whether on or off campus (provided that it is within 30-minutes' walking distance of campus). For more information, visit [online](#). To register for a Safe-Walk, call 613-520-4066 or visit in person at 426 UC.

Carleton Health and Counselling Services: Provides outpatient medical services and confidential personal counselling services. Students can self-refer to counselling. For more information visit <http://carleton.ca/health/> or call 613-520-6674.

Accommodations: You may need special arrangements to meet your academic obligations during the term. For an accommodation request, the processes are as follows:

Pregnancy obligation

Please contact your instructor with any requests for academic accommodation during the first two weeks of class, or as soon as possible after the need for accommodation is known to exist. For more details, visit the Equity Services website: carleton.ca/equity/wp-content/uploads/Student-Guide-to-Academic-Accommodation.pdf

Religious obligation

Please contact your instructor with any requests for academic accommodation during the first two weeks of class, or as soon as possible after the need for accommodation is known to exist.

For more details, visit the Equity Services website: carleton.ca/equity/wp-content/uploads/Student-Guide-to-Academic-Accommodation.pdf

Academic Accommodations for Students with Disabilities

If you have a documented disability requiring academic accommodations in this course, please contact the Paul Menton Centre for Students with Disabilities (PMC) at 613-520-6608 or pmc@carleton.ca for a formal evaluation or contact your PMC coordinator to send your instructor your Letter of Accommodation at the beginning of the term. You must also contact the PMC no later than two weeks before the first in-class scheduled test or exam requiring accommodation (if applicable). After requesting accommodation from PMC, meet with your instructor as soon as possible to ensure accommodation arrangements are made.

carleton.ca/pmc

Survivors of Sexual Violence

As a community, Carleton University is committed to maintaining a positive learning, working and living environment where sexual violence will not be tolerated, and its survivors are supported through academic accommodations as per Carleton's Sexual Violence Policy. For more information about the services available at the university and to obtain information about sexual violence and/or support, visit: carleton.ca/sexual-violence-support

Accommodation for Student Activities

Carleton University recognizes the substantial benefits, both to the individual student and for the university, that result from a student participating in activities beyond the classroom experience. Reasonable accommodation must be provided to students who compete or perform at the national or international level. Please contact your instructor with any requests for academic accommodation during the first two weeks of class, or as soon as possible after the need for accommodation is known to exist. <https://carleton.ca/senate/wp-content/uploads/Accommodation-for-Student-Activities-1.pdf>

3502B Reading Schedule Fall Term

- **I recommend that you read the head notes in the anthology to all the texts we are studying this term**
- **The reading schedule is subject to minor changes, which will be announced ahead of time**

Wednesday, September 4

Welcome and orientation

Friday, September 6

Introduction to the course

Wednesday, September 11

William Blake, “The Ecchoing Green”
 “The Lamb”
 “The Tyger”
 “London”

Friday, September 13

Henry Mayhew, “The Watercress Seller”
 “Boy Crossing-Sweepers and Tumblers”
 “Of the Mudlarks”

Wednesday, September 18

Alexander Pope, “Windsor Forest”

Friday, September 20

William Wordsworth, “Tintern Abbey”

Wednesday, September 25

Edmund Burke and William Gilpin, “The Sublime and the Picturesque” (ARES)

Friday, September 27

TBA

Wednesday, October 2

Dorothy Wordsworth, “Grasmere, A Fragment”
 Dorothy Wordsworth, from “Grasmere Journals”

Friday, October 4

William Wordsworth, “Nutting”

+ Essay Writing: A Refresher

Wednesday, October 9

William Blake, “The Chimney Sweeper” (From *Songs of Innocence and Songs of Experience*)

+ Response essays due

Friday, October 11

Stephen Duck, “The Thresher’s Labour”
 Mary Collier, “The Woman’s Labour”

Wednesday, October 16

Oliver Goldsmith, “The Deserted Village”

Friday, October 18

TBA

Wednesday, October 23

Fall break; no class

Friday, October 25

Fall break; no class

Wednesday, October 30Elizabeth Gaskell, *North and South*

+ A meeting with your writing

Friday, November 1*North and South*

+ Research skills and resources for essay writers

Wednesday, November 6*North and South***Friday, November 8***North and South***Wednesday, November 13**

Samuel Taylor Coleridge, "The Rime of the Ancient Mariner"

Friday, November 15

In-class test

Wednesday, November 20

Coleridge, "Rime"

Friday, November 22

Percy Shelley, "Ozymandias"

Alfred Tennyson, "The Kraken"

+ Essay process journals due

Wednesday, November 27

Mandatory in-class writing workshop

Friday, November 29

Lord Byron, “Darkness”

+ Know Your MLA

Wednesday, December 4

John Ruskin, “The Storm Cloud of the Nineteenth Century”

+ Research essays due

3502B Reading Schedule Winter Term

Wednesday, January 8

Robert Browning, “My Last Duchess”

Friday, January 10

Augusta Webster, “A Castaway”

+ A meeting with your writing

Wednesday, January 15

“A Castaway”

Friday, January 17

Mary Prince, *The History of Mary Prince*

Wednesday, January 22

The History of Mary Prince

Friday, January 24

Jonathan Swift, “The Lady’s Dressing Room”

Wednesday, January 29

Lady Mary Wortley Montague, “The Reasons that Induced Dr. S to Write a Poem Called The Lady’s Dressing Room”

Friday, January 31

Charles Darwin, from *The Origin of Species*

Wednesday, February 5

The Origin of Species

+ Polishing your writing: common errors, passive voice, etc.
--

Friday, February 7

William Wordsworth, from “Preface to the Lyrical Ballads”

Percy Shelley, from “A Defence of Poetry”

Wednesday, February 12

Matthew Arnold, “The Function of Criticism at the Present Time”

Friday, February 14

Matthew Arnold, “The Scholar Gypsy”

+ Response essays due

Wednesday, February 19

Winter break; no class

Friday, February 21

Winter break; no class

Wednesday, February 26Bram Stoker, *Dracula***Friday, February 28***Dracula***Wednesday, March 4***Dracula***Friday, March 6***Dracula*

+ A meeting with your writing

Wednesday, March 11

Alfred Tennyson, “The Lady of Shalott”

Friday, March 13

“The Lady of Shalott”

Wednesday, March 18

Christina Rossetti, "After Death"

Friday, March 20

Arthur Conan Doyle, "A Scandal in Bohemia"

Wednesday, March 25

"A Scandal in Bohemia"

Doyle, "The Man with the Twisted Lip" (ARES)

+ Essay process journals due

Friday, March 27

Writing workshop

Wednesday, April 1

"The Man with the Twisted Lip"

Friday, April 3

Course review in preparation for the final exam

Learning self-assessment

Course evaluation

Final essays due in class