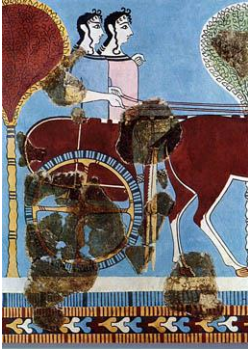


**The College of the Humanities
Greek and Roman Studies Program
CLCV 2303/ARTH 2102
Fall Term
Location Saint Patrick's Building, room 100**



**GREEK ART AND
ARCHAEOLOGY**

Professor:	Dr. L. Gagné
Office:	Paterson Hall, room 310A
E-mail:	laura.gagne@carleton.ca
Classes:	Tuesdays and Thursdays 11:35-12:55
Office Hours:	Tuesdays and Thursdays 10:00-11:00 or by appointment

COURSE DESCRIPTION

CLCV 2303 [0.5 credit]

Greek Art and Archaeology

The art, architecture and archaeology of ancient Greece. Vase painting, sculpture, architecture, town planning and analogous arts.

Also listed as ARTH 2102.

Precludes additional credit for CLCV 2302 (no longer offered) and ARTH 2100 (no longer offered).

Prerequisite(s): second-year standing or permission of the unit.

Lecture three hours a week.

TEXTBOOK

Pedley, John Griffiths. 2012. *Greek Art and Archaeology. Fifth Edition*. Boston: Prentice Hall.

The text book is available at the University Bookstore. You can also rent it as an e-book on 180-day loan from the bookstore for \$45.21, or you can purchase it as an e-book:

<https://www.vitalsource.com/products/greek-art-and-archaeology-john-g-pedley-v9780205976294>. The prices on this site are in US dollars, so be aware of the cost of conversion of currency.

A copy is on course reserve at the library on a 4-hour loan basis.

EVALUATION

Quizzes (5% each, one per module)	20%
Workshops (5% each)	10%
Midterm Test:	30%
Final examination:	40%

PARTICIPATION

Regular attendance is required in order to succeed in this course. Much of the material covered is available only in the lectures. The quizzes, midterm and final exams will be based mainly on the lectures, although there will also be material from the readings.

Students are expected to check their university email regularly and also to visit the course website on CuLearn often. This is how I will communicate with you. Classes will only be cancelled in extreme circumstances. Notification will appear on CuLearn if this is the case. Please note that in case of bad weather, there is a small chance I may be late if traffic is unusually bad. If there is no notice on CuLearn to state that class is cancelled, this means I am driving and will teach during the time remaining after I arrive.

WORKSHOPS

This course has been registered in the Incentive Program offered through the Centre for Student Academic Support (CSAS). CSAS Skill Development Workshops are designed to help students cultivate and refine their academic skills for a university environment. To earn 10% marks towards attendance/participation you are expected to attend 2 of workshops throughout the term.

Skill Development Workshops for the Fall 2017 term will be available starting September 18th, 2017 and must be completed by **December 8th, 2017** to receive credit for the Incentive Program.

To see the complete Skill Development Workshop schedule, please visit mySuccess via Carleton Central. You can also view your CSAS Skill Development Workshop attendance history at any time by logging into mySuccess. In addition to the CSAS Skill Development Workshops hosted on campus, CSAS offers several online workshops. If you are interested in participating in an online workshop, you can enroll through the CSAS website: carleton.ca/csas.

Finally, please review the Incentive Program participation policies. You can find more information about these policies here: carleton.ca/csas/incentive-program/.

If you have any questions related to the Incentive Program or the CSAS Skill Development Workshops, please contact the Centre for Student Academic Support at csas@carleton.ca or 613-520-3822.

COURSE STRUCTURE

The course is divided into four modules. The format will be standard lectures. The course schedule below is a guide to the material to be covered in each lecture. Adjustments may be made to the schedule based on class needs.

QUIZZES

There will be four quizzes, each worth 5% of the final grade. These quizzes will be accessed through a link on CuLearn. You will have one week to attempt each quiz, but the quiz has a time limit of 25 minutes. Once you begin, you must finish it in one sitting, so ensure you have adequate time to do so. You cannot stop and restart the quiz. You will be given 20 questions assigned randomly from a bank of questions. The questions will be a mixture of multiple choice, true/false, and matching questions. You may use your notes and textbook, but you need to study as well, since you will not have time to look everything up in your notes. Students are to take the quiz on their own. Please note that quiz 2 will remain open over the fall break, but you do not need to do it during this time. There are days before and after. Quiz 4 will remain open into the final exam period to allow you the full week, but you are expected to try to do the quiz before December 10th. Since a quiz is only worth 5%, it can be given in the last week of class.

MIDTERM AND FINAL EXAMINATIONS

The midterm examination will be held on Tuesday, October 30th in class. It will cover material from the beginning of the course to the end of the lectures on the Archaic Period (the lecture of October 19th). It will be worth 30% of the final grade for the course.

The final examination will be scheduled by the Registrar's Office. Students are advised not to make travel plans during the final examination period. The final examination will be worth 40% of the overall mark for the course. It will cover material from after the midterm (November 2nd (Early Classical Art) will be the first lecture for the material covered in the final exam).

STUDENT SUPPORT

I will use CuLearn for the administration of this course. You will need to have a Carleton University email account and will need to make sure you can access CuLearn. You can also send me an email anytime and I will do my best to answer within 48 hours. Please

make sure you put the course code CLCV 2303 or ARTH 2102 in the subject line of your email so that I will not think it is spam and delete it.

Student or professor materials created for this course (including presentations and posted notes, labs, case studies, assignments and exams) remain the intellectual property of the author(s). They are intended for personal use and may not be reproduced or redistributed without prior written consent of the author(s).

SCHEDULE

Readings are taken from the textbook, unless otherwise specified. Readings from other sources are available for download as PDFs from CuLearn.

Date	Topic	Readings
Thursday September 7	Introduction to Greek Art	Introduction pp. 11-29
Module 1	Bronze Age Greece	
Tuesday September 12	The Early Bronze Age	Chapter 1 pp. 31-43
Thursday September 14	Minoan Art and Religion	Chapter 2 pp. 45-52 Chapter 3 pp. 70-80
Tuesday September 19	Minoan Architecture – palaces, “mansions”, and town planning	Chapter 3 pp.63-70
Thursday September 21	Akrotiri, Thera	Chapter 3 pp. 81-85
Tuesday September 26	Mycenae – the Shaft Graves and other tombs	Chapter 3 pp. 86-95
Thursday September 28	Mycenaean palaces – Linear B, architecture, and wall-painting	Chapter 3 pp.75-77
Tuesday October 3	The end of the Bronze Age, the Age of Transition, and the Geometric Period	Chapter 3 pp. 99-101 Chapter 4 pp. 103-119
Tuesday October 3 – Tuesday October 10	Quiz 1 on CuLearn	
Module 2	The Archaic Period	
Thursday October 5	The Orientalizing Period	Chapter 5 pp. 121-145
Tuesday October 10	Archaic Sculpture	Chapter 6 pp. 171-189
Thursday October 12	Archaic Architecture	Chapter 6 pp. 147-171
Tuesday October 17	Archaic Pottery – Black Figure Technique	Chapter 6 pp. 189-199

Thursday October 19	Archaic Pottery – Red Figure Technique	Chapter 6 pp. 200-205
Thursday, October 19- Monday, October 29	Quiz 2 on CuLearn (you would be wise to do it BEFORE reading week if possible)	
Monday October 23- Friday October 27	Fall Break	
Tuesday October 30	Midterm Test (modules 1 &2)	
Module 3	The Classical Period	
Thursday November 2	Early Classical Art	Chapter 7 pp. 229-247
Tuesday November 7	Early Classical Architecture	Chapter 7 pp. 207-229
Thursday November 9	High Classical Art	Chapter 8 pp. 276-287
Tuesday November 14	High Classical Architecture The Parthenon and other buildings of the Acropolis	Chapter 8 pp. 249-276
Thursday November 16	Controversial issues – The Parthenon Marbles, reconstructions, protection of cultural heritage	Readings will be posted on CuLearn
Thursday, November 16- Thursday, November 23	Quiz 3 on CuLearn	
Module 4	The Fourth Century	
Tuesday November 21	Architecture and town planning	Chapter 9 pp. 289-303
Thursday November 23	Sculpture	Chapter 9 pp. 308-317
Tuesday November 28	Vase painting, wall painting and mosaics	Chapter 9 pp. 318-337
Thursday November 30	Hellenistic architecture Pergamon	Chapter 10 pp. 339-354
Tuesday December 5	Hellenistic art	Chapter 10 pp. 354-38
Tuesday, December 5 – Tuesday, December 12	Quiz 4 on CuLearn	

Thursday December 7	Exam Review	
Sunday December 10- Friday December 22	Final exam period. Date, time, and location TBD	



University Regulations for All Humanities Courses

Copies of Written Work Submitted

Always retain for yourself a copy of all essays, term papers, written assignments or take-home tests submitted in your courses.

Academic Integrity at Carleton

Plagiarism is presenting, whether intentionally or not, the ideas, expression of ideas, or work of others as one's own. Plagiarism includes reproducing or paraphrasing portions of someone else's published or unpublished material, regardless of the source, and presenting these as one's own without proper citation or reference to the original source. Examples of sources from which the ideas, expressions of ideas or works of others may be drawn from include but are not limited to: books, articles, papers, literary compositions and phrases, performance compositions, chemical compounds, art works, laboratory reports, research results, calculations and the results of calculations, diagrams, constructions, computer reports, computer code/software, and material on the internet. More information can be found on <https://carleton.ca/registrar/academic-integrity/#AIatCU>.

Academic Accommodation Policy

Academic Accommodation

You may need special arrangements to meet your academic obligations during the term. For an accommodation request the processes are as follows:

Pregnancy obligation: write to the instructor with any requests for academic accommodation during the first two weeks of class, or as soon as possible after the need for accommodation is known to exist. For more details see the [Student Guide](#)

Religious obligation: write to the instructor with any requests for academic accommodation during the first two weeks of class, or as soon as possible after the need for accommodation is known to exist. For more details see the [Student Guide](#)

Academic Accommodations for Students with Disabilities: The Paul Menton Centre for Students with Disabilities (PMC) provides services to students with Learning Disabilities (LD), psychiatric/mental health disabilities, Attention Deficit Hyperactivity Disorder (ADHD), Autism Spectrum Disorders (ASD), chronic medical conditions, and impairments in mobility, hearing, and vision. If you have a disability requiring academic accommodations in this course, please contact PMC at

613-520-6608 or pmc@carleton.ca for a formal evaluation. If you are already registered with the PMC, contact your PMC coordinator to send me your Letter of Accommodation at the beginning of the term, and no later than two weeks before the first in-class scheduled test or exam requiring accommodation (if applicable). After requesting accommodation from PMC, meet with me to ensure accommodation arrangements are made. Please consult the [PMC website](#) for the deadline to request accommodations for the formally-scheduled exam (if applicable).

Grading System at Carleton University

Standing in a course is determined by the course instructor, subject to the approval of the faculty Dean. Standing in courses will be shown by alphabetical grades. The system of grades used, with corresponding grade points and the percentage conversion is below. Grade points indicated are for courses with 1.0 credit value. Where the course credit is greater or less than one credit, the grade points are adjusted proportionately.

[Grading System Chart](#)

Course Sharing Websites and Copyright

Classroom teaching and learning activities, including lectures, discussions, presentations, etc., by both instructors and students, are copy protected and remain the intellectual property of their respective author(s). All course materials, including PowerPoint presentations, outlines, and other materials, are also protected by copyright and remain the intellectual property of their respective author(s).

Students registered in the course may take notes and make copies of course materials for their own educational use only. Students are not permitted to reproduce or distribute lecture notes and course materials publicly for commercial or non-commercial purposes without express written consent from the copyright holder(s).

Statement on Class Conduct

The Carleton University Human Rights Policies and Procedures affirm that all members of the University community share a responsibility to:

- promote equity and fairness,
- respect and value diversity,
- prevent discrimination and harassment, and

preserve the freedom of its members to carry out responsibly their scholarly work without threat of interference.

Deferred Term Work

In some situations, students are unable to complete term work because of illness or other circumstances beyond their control, which forces them to delay submission of the work.

Students who claim illness, injury or other extraordinary circumstances beyond their control as a reason for missed term work are held responsible for immediately informing the instructor concerned and for making alternate arrangements with the instructor and **in all cases this must occur no later than three (3.0) working days after the term work was due.**

The alternate arrangement must be made before the last day of classes in the term as published in the academic schedule. Normally, any deferred term work will be completed by the last day of term. More information is available [in the calendar](#).

Deferred Exams

Students who do not write/attend a final examination because of illness or other circumstances beyond their control may apply to write a deferred examination.

1. be made in writing to the Registrar's Office **no later than three working days after the original final examination or the due date of the take-home examination;** and
2. be fully supported by appropriate documentation and in cases of illness by a medical certificate dated no later than one working day after the examination or by appropriate documents in other cases. Medical documents must specify the date of the onset of the illness, the (expected) date of recovery, and the extent to which the student was/is incapacitated during the time of the examination. The University's preferred medical form can be found at the Registrar's Office [forms and fees page](#).

The granting of a deferral also requires that the student has performed satisfactorily in the course according to the evaluation scheme established in the Course Outline, excluding the final examination for which deferral privileges are requested. Reasons for denial of a deferral may include, among other conditions, a failure to (i) achieve a minimum score in the course before the final examination; (ii) attend a minimum number of classes; (iii) successfully complete a specific task (e.g. term paper, critical report, group project, computer or other assignment); (iv) complete laboratory work; (v) successfully complete one or more midterms; or (vi) meet other reasonable conditions of successful performance.

More information can be found [in the calendar](#).

Any questions related to deferring a Final Exam or Final Assignment/Take Home Examination should be directed to: [Registrar's Office](#)

Withdrawal From Courses

Withdrawn. No academic credit, no impact on the CGPA.

NEW FALL 2017: WDN is a permanent notation that appears on the official transcript for students who withdraw after the full fee adjustment date in each term. Students may withdraw on or before the last day of classes.

Dates can be found here: <http://calendar.carleton.ca/academicyear/>

Department Contact Information

College of the Humanities 300 Paterson Hall (613)520-2809

CollegeOfHumanities@cunet.carleton.ca

Drop box for CLCV, HUMS LATN GREK Term Papers and assignments is outside 300 P.A.

Greek and Roman Studies 300 Paterson Hall (613)520-2809

GreekAndRomanStudies@cunet.carleton.ca

Drop Box is outside of 300 P.A.

Religion 2A39 Paterson Hall (613)520-2100

Religion@cunet.carleton.ca

Drop box for RELI Term Papers and assignments is outside of 2A39 P.A.

Registrar's Office 300 Tory (613)520-3500

<https://carleton.ca/registrar/>

Student Resources on Campus

[CUKnowHow Website](#)