

# SONDOS BAZARA

---

INDUSTRIAL DESIGN PORTFOLIO 2020



# INDEX:

★ “FAKE GROWTH” SERIES

3	IGUANA DRAWING
4	IMPROVISE
5	SELF PORTRAIT
6	GESTURE DRAWINGS
7	ANATOMY STUDY
8 ★	W.A.R.
9 ★	THE CHAIR
10	CARDBOARD CHAIR (PROTOTYPE)
11 ★	THE STRUCTURE
14	ALTERED NATURE
16	3CENTS <sup>2</sup> LOGO
17	3CENTS <sup>2</sup> ADS
19	MURAL

# IGUANA DRAWING



28" X 24"  
CHALK & CHARCOAL  
REAL LIFE DRAWING



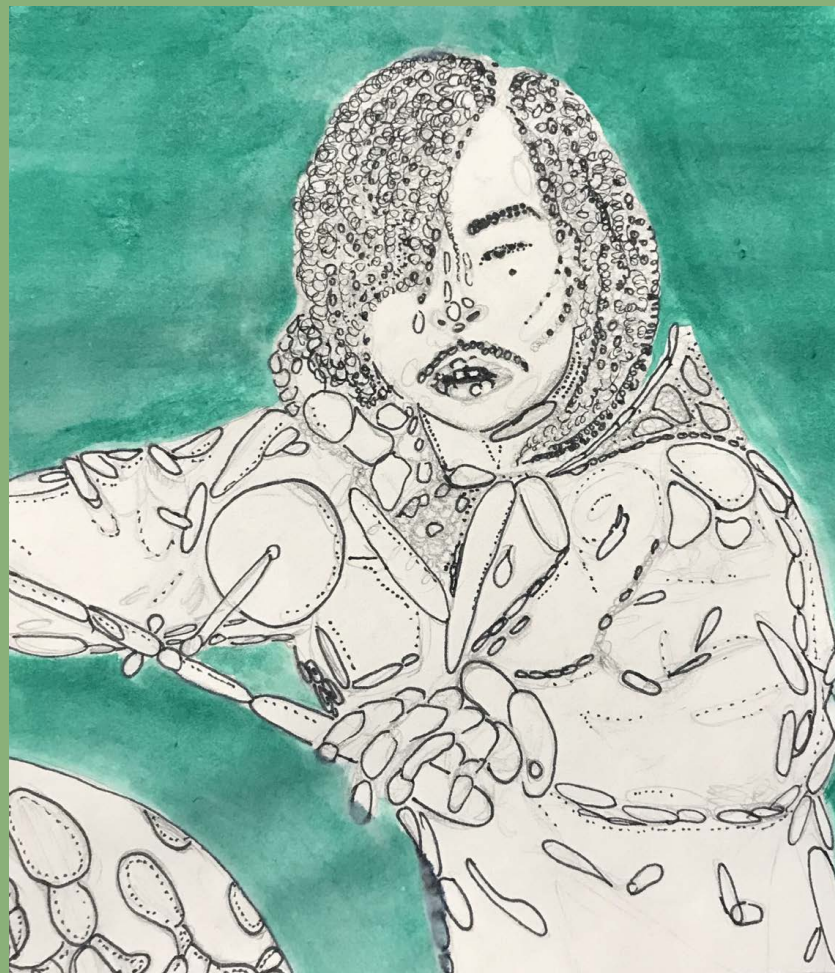


# IMPROVISE

6" X 5"

watercolour, ink, &  
graphite  
MULTIMEDIA

MINIMALISTIC DRAWING  
WITH THE USE OF CIRCLES  
AND ONE SHADE OF COLOUR  
TO EMPHASISE IMPACT.



# SELF PORTRAIT

11" X 8"

CHALK & CHARCOAL  
ON TINTED CHALK PAPER

USED REFERENCE IMAGE FROM  
GRADUATION PICTURE DAY. PIECE  
FOCUSES MOSTLY ON SHADOWS,  
HIGHLIGHTS AND PROPORTIONS



# GESTURE DRAWINGS

BASED ON GRADE 9 DRAMA CLASS  
TABLEAU; "MISSION IMPOSSIBLE"



10sec/GESTURE  
GRAPHITE (2B & 4B)



# ANATOMY STUDY

17" X 12"  
CHALK & CHARCOAL

PIECE FOCUSES ON  
FORM WITH THE HELP  
OF BOLD HIGHLIGHTS  
AND SHADOWS

2<sub>MIN</sub>/SKETCH  
GRAPHITE (2B)



# W.A.R. *WEAPONS AGAINST RITUALS*



28" X 24"

ACRYLIC PAINT, ALUMINIUM,  
STICKS, FAKE PLANTS  
MULTIMEDIA





# THE CHAIR

10" X 8"  
CHALK PASTEL &  
ACRYLIC PAINT  
MULTIMEDIA

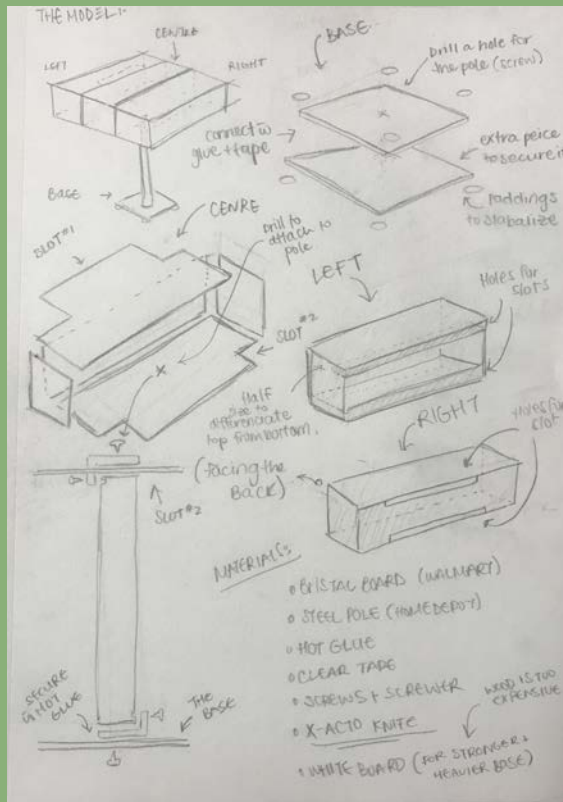
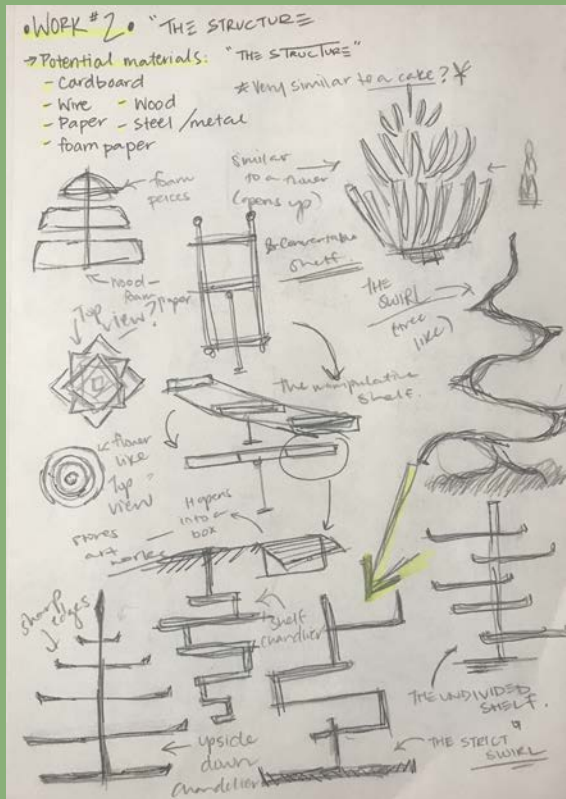
IMPACTFUL PIECE, SHOWING  
THE RELATIONSHIP BETWEEN  
MAN-MADE OBJECTS AND  
NATURE



SCHOOL PROJECT, TO MAKE  
A CHAIR OUT OF  
CARDBOARD. THUMBNAIL  
SKETCHES TOP RIGHT, FINAL  
DESIGN IN THE CENTRE,  
MEASUREMENTS TO SCALE  
1":10" ON THE LEFT, AND  
THE PROTOTYPE, SCALE  
1":5". WORK IN PROGRESS



# THE STRUCTURE (PLANNING)



BRAINSTORMING A  
CONVERTIBLE  
SHELF & TABLE

A 3 DIMENSIONAL PIECE  
FOR THE "Fake GROWTH"  
SERIES WHICH REFLECTS  
SIMILAR IDEAS FROM BOTH  
PIECES.





# THE STRUCTURE (PROTOTYPE)

8" X 6" X 5"

HOT GLUE, MASKING TAPE,  
AND CARDBOARD  
MIXED MEDIA

A PROTOTYPE FOR THE 3  
DIMENSIONAL PIECE IN  
ORDER TO TEST WHETHER IT  
WOULD WORK OR NOT.



# THE STRUCTURE (FINAL)

## BASE PROCESS:

27" X 19" X 17"

STEEL ROD, METAL WIRES, FOAM  
CORE, HOT-GLUE, SCREWS, SILICON,  
WHITE BOARD, FAKE PLANTS, ACRYLIC,  
ROPE, PLASTIC, TISSUE

## MIXED MEDIA

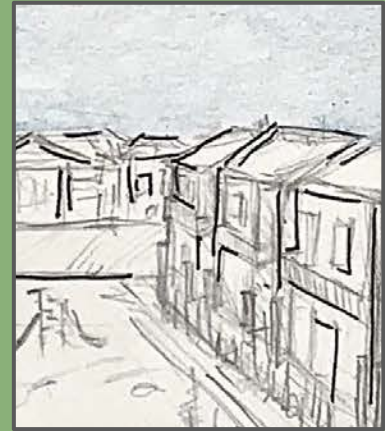
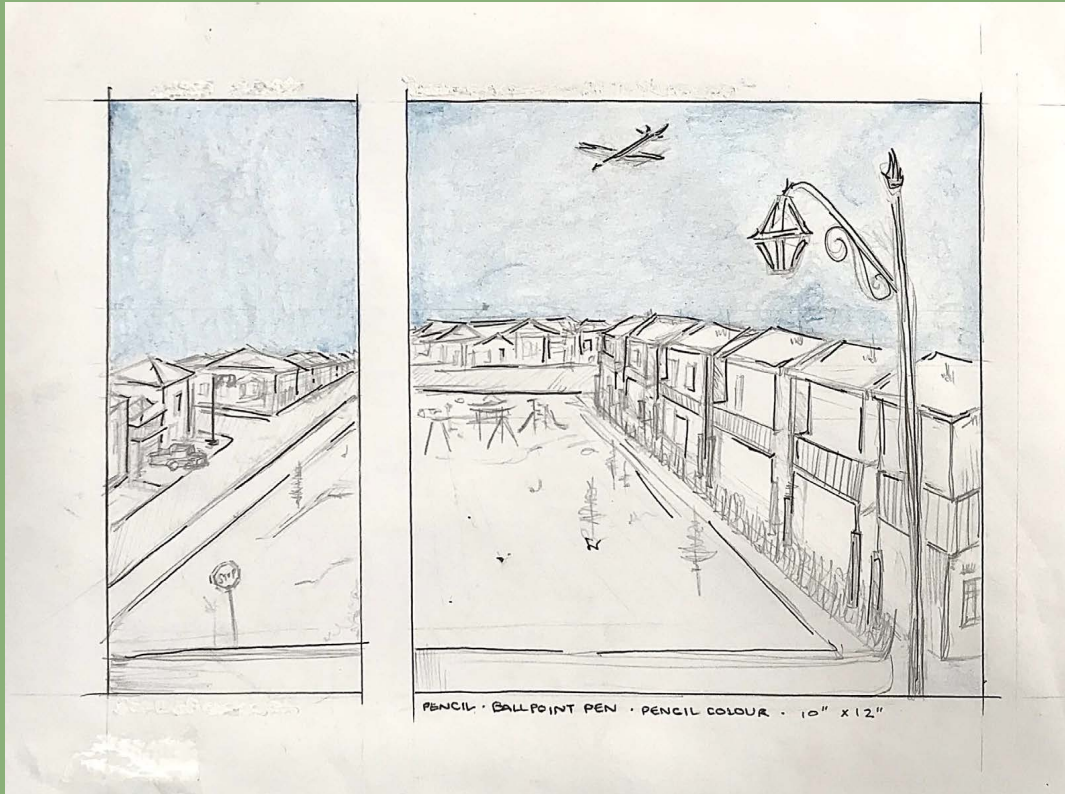
3D DETACHABLE PIECE,  
SHOWING THE USEFUL  
PURPOSE OF MAN-MADE  
OBJECTS WITH THE  
CONNECTION TO NATURE



# ALTERED NATURE

10" X 12"

PENCIL, BALLPOINT PEN,  
PENCIL COLOUR  
OBSERVATIONAL DRAWING



OUTSIDE MY WINDOW



# ALTERED NATURE

PHOTOGRAPHY

BUILDINGS: DOWNTOWN, TORONTO

NATURE: KEN-ROSS PARK, OTTAWA



# 3CENTS<sup>2</sup> LOGO



5" X 5" X ¼"  
PINE WOOD, PAINT,  
VCARVE, VARNISH  
COMPUTER  
PROGRAMMED

BY USING THE COMPUTER PROGRAM  
VCARVE, THE MACHINE WAS ABLE TO  
CARVE MY DESIGN ONTO PINE WOOD.  
I THEN ROUGHLY PAINTED IT. I  
SANDED IT TO GIVE IT A CLEAN  
TOUCH, THEN FINISHED IT WITH A  
VARNISH LAYER (LIQUID PLASTIC)

# 3CENTS<sup>2</sup> AD. (PHYSICAL)

BY USING A SKETCH I DREW, I SCANNED IT THEN UPLOADED IT TO THE COMPUTER PROGRAM *VCARVE*. THE MACHINE WAS ABLE TO CARVE MY DESIGN ONTO MDF. I THEN ROUGHLY PAINTED THE CARVED AREAS, THEN PAINTED THE REST OF THE BOARD WHITE WITH A ROLLER. I FINISHED THE ENTIRE PIECE WITH A VARNISH LAYER (LIQUID PLASTIC).

**BAZARA**

(carved on the back)



12" X 10" X 1/4"

MDF, PAINT, *VCARVE*, VARNISH  
COMPUTER PROGRAMMED





# 3CENTS<sup>2</sup> AD. (GRAPHICAL)

PHOTOGRAPHY, CANVA EDITS  
 INSTAGRAM PROFILE  
 @3CENTS2



# MURAL (PLANNING)

THIS MURAL IS LOCATED ON 3-1940 BANK STREET, *3CENTS*<sup>2</sup> COFFEESHOP. IT SHOWS ALL THE MAIN PRODUCTS THAT ARE SERVED.



THE IDEA:  
Q CARDS TAPED TOGETHER



THE STENCIL:



THE SKETCH:  
FINAL PLAN (MINOR CHANGES  
WERE MADE LATER ON)

THE WALL:



THE  
COLOUR  
SWATCH:





# MURAL (FINAL)

~ 11' X 8'

