



# Fact Sheet

2024/2025

**1**

## International Relations Office

---

Contact Details

PAG 2

**2**

## Academic Information

---

Language of instruction

PAG 4

Academic Calendar

PAG 4

Restrictions

PAG 5

Partner Universities: Students Nomination

PAG 6

Students: Personal Data, Subjects Selection  
and Enrolment Confirmation

PAG 6

Learning agreement

PAG 6

Subject Selection and Confirmation of Enrolment

PAG 7

Transcript of records

PAG 7

**3**

## Practical information for incoming students

---

Arrival dates

PAG 8

Informative meetings

PAG 8

Buddy program

PAG 9

Language support

PAG 9

Accommodation

PAG 10

Cost of living

PAG 10

Health insurance

PAG 10

Documentation for  
practical courses

PAG 11

Visa

PAG 11



1

# Contact information

## INTERNATIONAL RELATIONS OFFICE

### Institution details

NAME OF THE INSTITUTION

Universidad de Málaga (UMA)

ERASMUS CODE

EMALAGA01

WEBSITE

[www.uma.es](http://www.uma.es)

### International office

NAME OF THE INTERNATIONAL OFFICE

Servicio de Movilidad y Cooperación Internacional

ADDRESS

Edificio Rosa Gálvez (First Floor)  
Bulevar Louis Pasteur, 35  
29071 Campus de Teatinos MÁLAGA

OFFICE HOURS


9h-14h, from Monday to Friday (closed during Easter week,  
Christmas Holidays and August-Summer Holidays)


TELEPHONE

+34 952 131 111

WEBSITE

[www.uma.es/relaciones-internacionales](http://www.uma.es/relaciones-internacionales)

 @rriiuma

 @rriiuma

 /relacionesinternacionalesuma



## Contact details

**Susana Cabrera Yeto**

VICE-CHANCELLOR FOR INTERNATIONAL MOBILITY AND COOPERATION

+34 952 133 203 | [vrinternacional@uma.es](mailto:vrinternacional@uma.es)

**Elidia Beatriz Blázquez Parra**

DEPUTY VICE-PRESIDENT FOR INTERNATIONAL  
MOBILITY

+34 952 136 512 | [vra.movilidad@uma.es](mailto:vra.movilidad@uma.es)

**José Jesús Delgado Peña**

DEPUTY VICE-PRESIDENT FOR INTERNATIONAL  
COOPERATION

+34 952 136 339 | [vra.coopinternacional@uma.es](mailto:vra.coopinternacional@uma.es)

**Miriam Seghiri**

UMA INTERNATIONAL HUB DIRECTOR

+34 951 953 127 | [dir.internationalhub@uma.es](mailto:dir.internationalhub@uma.es)

**Ricardo del Milagro Pérez**

HEAD OF INTERNATIONAL RELATIONS OFFICE

+34 952 137 860 | [rdmilagro@uma.es](mailto:rdmilagro@uma.es)



## Erasmus+ KA131

**Lilian Barranco**

HEAD OF ERASMUS+ KA103

+34 952 134 144 | lbarranco@uma.es

OUTGOING STUDENT ADVISORS

+34 951 953 115 | outgoing@uma.es

**Magdalena Chica/Lorena Caro**

INCOMING STUDENT ADVISORS

+34 952 134 283 | incoming@uma.es

## Erasmus+ KA171

**M. Carmen Doblas**

SENIOR COORDINATOR

+34 952 134 300 | mcdoblas@uma.es

**Mar Viciano/Cynthia García**

INCOMING & OUTGOING STUDENT/STAFF ADVISORS

+34 952 136 302 | icm@uma.es

## America, Asia & Oceania

ISEP / PIMA / Lectureship Programme

**Virginia Escriche**

SENIOR COORDINATOR

+34 952 124 300 | mcdoblas@uma.es

**Isabel Martín**

OUTGOING STUDENT ADVISORS

+34 951 953 116 | outgoing@uma.es

**Magdalena de la Chica**

INCOMING STUDENT ADVISOR

+34 952 134 283 | incoming@uma.es

**Laura Rodriguez**

DICKINSON COLLEGE / TEACHING ASSISTANT  
PROGRAM COORDINATOR

+34 952 137 349 | ta.programs@uma.es

## Transcript of records

EVERY MOBILITY PROGRAMME

**Delia García**

COORDINATOR

+ 34 951 953 117 | digarcia@uma.es

## International projects

ERASMUS+

**Margarita Delgado**

HEAD OF ERASMUS+ PROJECTS

+34 952 137 349 | intprojects@uma.es

**Laura Rodriguez/Carmen Ramos**

INT. PROJECT COORDINATORS

+34 952 137 349 | intprojects@uma.es

## 2

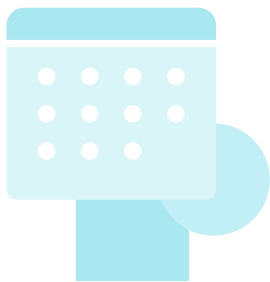
## Academic Information



### ▶ Language of instruction

- Classes are taught in Spanish
- No certificate of level is required, although a B1 level is recommended.

[Subjects taught in English](#)



### ▶ Academic calendar

Each faculty publishes its own calendar and timetables. It must be consulted in the specific website of the faculty: [www.uma.es/centros-listado](http://www.uma.es/centros-listado)

SEMESTER 1	02/09/2024 – 14/02/2025
SEMESTER 2	17/02/2025 – 18/07/2025
EXAMINATIONS	SM1. During the month of January SM2. From the last week of May to the first week of July



## ■ Requirements and Restrictions

Each faculty reserves the right to restrict courses for exchange students with the intention of guaranteeing a better academic assistance and security to students.

### STUDY PROGRAMME

---

Please, find the Academic Offer and Programme of bachelor and master degrees here:  
<http://u.uma.es/d18/>

#### MASTER

Postgraduate students (Master and PhD) will be ONLY accepted if this option is included in the Bilateral Agreement. In this case, only master courses from the main faculty will be accepted.

<http://www.uma.es/masteres-oficiales/>

### FACULTY RESTRICTIONS

---

- Students coming from the **Erasmus+ programme** can only be nominated to the area of study stipulated in the inter-institutional agreement.
- Students must register for undergraduate level courses only and have to choose at least **50%** of their courses in their main faculty or school where they have been nominated.
- Medicine students cannot enroll in 6th year courses.
- TFG (Final degree dissertation) and TFM (final master dissertation) need approval from the coordinators of the dissertation at UMA.
- Practicum or practical courses need approval of the Practicum coordinator.
- Master courses need approval of the master coordinator.
- Health Sciences and Medicine courses when none of these are the main faculty of the student, the approval of the coordinator of the correspondent faculty is required.
- Mobility students may NOT enrol for subjects at the Faculty of Fine Arts if said faculty is not their main centre.
- Mobility students may NOT register for courses at the School of Architecture if the School of Architecture is not their main school.

## ■ Partner Universities: Students Nomination

■ Nominations will be made through the ALGORIA platform. Only nominations made through this channel will be accepted.

■ Link to nomination platform:

<https://relacionesi.uma.es/>

■ Account activation guide and nomination process:  
<u.uma.es/dXh/>

■ **Nomination deadlines:**

**Start:** 15 April 2024

**End:**

| First semester and full year: June 14, 2024

| Second semester: November 15, 2024

### EXCEPTION

Faculties:

- **Medicine**
- **Health Sciences**
- **Fines Arts**

FIRST SEMESTER, SECOND SE-  
MESTER AND FULL YEAR:

**JUNE 14, 2024**

## ■ Students: Personal Data, Subjects Selection and Enrolment Confirmation

■ Once nominated, students will receive a welcome email with instructions to access their private space for international mobility students.

■ Students will carry out their administrative procedures with UMA through the ALGORIA platform.

■ Link to the ALGORIA procedures guide: <https://www.uma.es/relaciones-internacionales/info/141812/algoria-student-guide/>

### Learning Agreement

(ONLY FOR ERASMUS+ STUDENTS)

The Learning Agreement will be signed by the academic tutor or centre coordinator. As it is an academic document, the International Relations Service is not responsible for its signature. The details of the centre coordinators can be found at the following link:

<u.uma.es/dj5/>

Any Learning Agreement signed prior to the registration of subjects at UMA will be provisional.

Due to the current development of our own software connected to EWP, we do not accept the digital version of the Learning Agreements (OLA) this year.

The student must upload the agreement in PDF format to his/her private space ALGORIA Incoming so that his/her tutor can sign it.



## Subject Selection and Confirmation of Enrolment

Incoming international mobility students will be able to select and register their subjects in ALGORIA. This option will be available on the following dates:

- First semester and full year: from 20 June to 15 September 2024
- Second semester and full year: from 18 December 2024 to 15 February 2025

### Minimum number of ECTS credits required:

Per semester:

- Erasmus+ KA131 Students: 6 ECTS
- NON Erasmus+ KA131 student: 18 ECTS

Per full year:

- o All students: 36 ECTS

### Maximum number of ECTS credits required:

Per semester:

36 ECTS

Per full year:

66 ECTS

## Transcript of Records

Both partner universities and students will be able to download the transcript of records from their respective online platforms. Once this information is available, an email will be sent to both the university and the student.

Indicative dates for downloading transcripts:

- **First semester:** From 1 March 2025 (First semester)
- **Second semester and Full Year:** From 1 June 2025 (Second semester and full year)

## 3

## Practical information for incoming students



### Certificate of arrival

It is an official certificate that shows the day when the student's mobility starts at UMA. Our document will be signed and stamped by the staff of the International Relations Service at the end of the Informative Meeting. The Certificate of Arrival provided by the home university will also be signed at the end of the Informative Meeting.

If the student is unable to attend the meeting, the Certificate of Arrival can be signed in person at the International Relations Office.

The start date of the study period will be the day of the Informative Meeting.



### Informative meetings

A welcome meeting for exchange students takes place at the start of every semester in order to provide all relevant and useful information about the main administrative and academic procedures, as well as inform about support services and other activities offered to exchange students.

<b>First Semester</b>	4th September 2024 - 11:00am (Spanish time) <i>(orientative date)</i>
	Salón de Actos de la Escuela Superior de Ingeniería de Telecomunicación/ Informática
<b>Second Semester</b>	4th February 2025 - 11:00am (Spanish time) <i>(orientative date)</i>
	Salón de Actos de la Escuela Superior de Ingeniería de Telecomunicación/ Informática

**If you are not able to attend any informative meeting:**

You will be responsible of following the administrative instructions included in our Procedures Guide and reading all the informative emails from the International Relations Office.





## Buddy programme

The Buddy Program aims to help exchange students to adapt to life studying and living in Malaga by putting them in contact with a local student. Your buddy can help you before and during your stay, give advice on how to get started at University (enrolment, virtual campus), how to get around campus and town, give you recommendations about cultural and leisure activities in Málaga, etc.

**Email** buddyprogram@uma.es

**Website** [u.uma.es/dj2/](http://u.uma.es/dj2/)



## Language Support

INTERNATIONAL CENTRE FOR SPANISH (CIE)

The CIE organizes a voluntary Spanish course for Erasmus+ and international exchange students. They will contact directly international students by email in order to inform them about the enrollment procedure and requirements.

**Adress** Avenida de la Estación s/n. El Palo 29017 - Málaga  
Tel.+34951952738 - Fax+34951952742

**Email** [cie@uma.es](mailto:cie@uma.es)

**Website** Please, check the specific dates, registration fees, class hours and ECTS credits on the following link:  
<http://www.uma.es/centrointernacionaldeespanol/>



## Accommodation

Students have to arrange their own accommodation, although UMA can assist them in finding accommodation through the following services:

▶▶ <http://u.uma.es/dPy/>



## Average cost of living

Accommodation	Single room in shared apartment: +300 €/month aprox. Residence (including meal): +800€-900€ month aprox.
Food	Menú on campus: 5 - 7 € aprox.
Transport	Student Bus Card: 27 €/month



## Health insurance

European Students	European Insurance Card: <a href="https://ec.europa.eu/social/main.jsp?catId=559&amp;langId=es">https://ec.europa.eu/social/main.jsp?catId=559&amp;langId=es</a> <a href="https://ec.europa.eu/social/main.jsp?catId=653&amp;langId=es">https://ec.europa.eu/social/main.jsp?catId=653&amp;langId=es</a>
Non European Students	Before arriving in Malaga, students with Non-European nationality must take out a private health insurance to cover them from their arrival date until their departure to home country
<b>*Exception:</b> UK students should bring a valid UK European Health Insurance Card or the new UK Global Health Insurance Card (GHIC) and they are not required to contract any additional health insurance.	

### IMPORTANT:

Incoming students must inform themselves prior to arrival the conditions and procedures to follow in Malaga in order to receive medical attention.



## Documentation FOR PRACTICAL COURSES

### Medicine, Education and Health Sciences Students

Incoming students who will attend practical courses (for instance, practicum) at the Faculty of Medicine or Health Sciences must bring from home country where they are nationals a Liability Insurance.

### Students who will conduct practical courses with minors

Incoming students who will attend practical courses (for instance, practicum) with minors must bring from home countries where they are nationals (if they have dual citizenship, of both country), a negative certificate from the Central Registry of Sexual Offenders, or a criminal record, and failing that, a consular certificate of good standing.



## Visa

### Non-European Students (Non - European Programs) and Erasmus+ KA107

In order to help students from Non-European Programmes in their visa procedures, Original Acceptance Letter will be able for downloading by the home Coordinator once students are nominated. Depending on the visa obtained at the Spanish Embassy/Consulate in their home country, the student may need to attend to the Police Station within the month after their arrival. Students may inform themselves about the need of this procedure when they apply for the visa.

### Non-European Students (Erasmus+ KA103)

All Erasmus+ students will be able to download the Letter of Acceptance after completing the Application form online. This Letter of Acceptance will serve for VISA applications.

### IMPORTANT

Non-European students are responsible for the application of their VISA or any other procedures established by the Spanish Embassy /Consulates in their home countries prior to their arrival in Malaga.