



THE UNIVERSITY  
OF THE  
WEST INDIES  
CAVE HILL CAMPUS  
BARBADOS, WEST INDIES

# EXCHANGE PROGRAMME INFORMATION SHEET 2024-2025



## ACADEMIC CALENDAR 2024-2025

The Campus operates a semester system with two semesters.  
August – December and  
January – May

### Semester I (Fall) *to be confirmed*

Start of Semester August 25<sup>th</sup>, 2024

End of Semester December 20<sup>th</sup>, 2024

### Semester II (Spring) *to be confirmed*

Start of Semester January 19<sup>th</sup>, 2025

End of Semester May 16<sup>th</sup>, 2025

## CONTACT US

### Senior Assistant Registrar/ Director

Mrs. Patricia Atherley

Tel: (246) 417-4208

Email: [patricia.atherley@cavehill.uwi.edu](mailto:patricia.atherley@cavehill.uwi.edu)

### International Programmes and Mobility Coordinator

Mrs. Paula Jarvis

Tel: (246) 417-4972

Email: [paula.jarvis@cavehill.uwi.edu](mailto:paula.jarvis@cavehill.uwi.edu)

### International Programmes and Student Mobility Assistant

Mrs. Cheri-Ann John

Tel: (246) 417-4903

Email: [internationaloffice@cavehill.uwi.edu](mailto:internationaloffice@cavehill.uwi.edu)

## NOMINATIONS, APPLICATIONS AND ACCEPTANCE

Nomination Deadlines April 1<sup>st</sup> for semester I (August)

September 15<sup>th</sup> for semester II (January)

Applications Deadlines April 15<sup>th</sup> - for Semester I or academic year

October 1<sup>st</sup> - for Semester II

### Supporting documentation

**English translations are required for ALL documents not in English**

- Official Transcript (student copies are not accepted)
- Copy of Passport Bio page
- Application to Reside on Hall where relevant
- Proof of English Language proficiency if English is not the applicant's first language
- Applications should indicate courses which students wish to take while on exchange. No processing can be done until this information is received.

### International Office

Student Enrolment and Retention Unit

Leslie Robinson Building

The University of the West Indies

Cave Hill Campus

P.O. Box 64, Bridgetown, BB11000, BARBADOS

Tel: (246) 417-4972/4994

Email: [internationaloffice@cavehill.uwi.edu](mailto:internationaloffice@cavehill.uwi.edu)

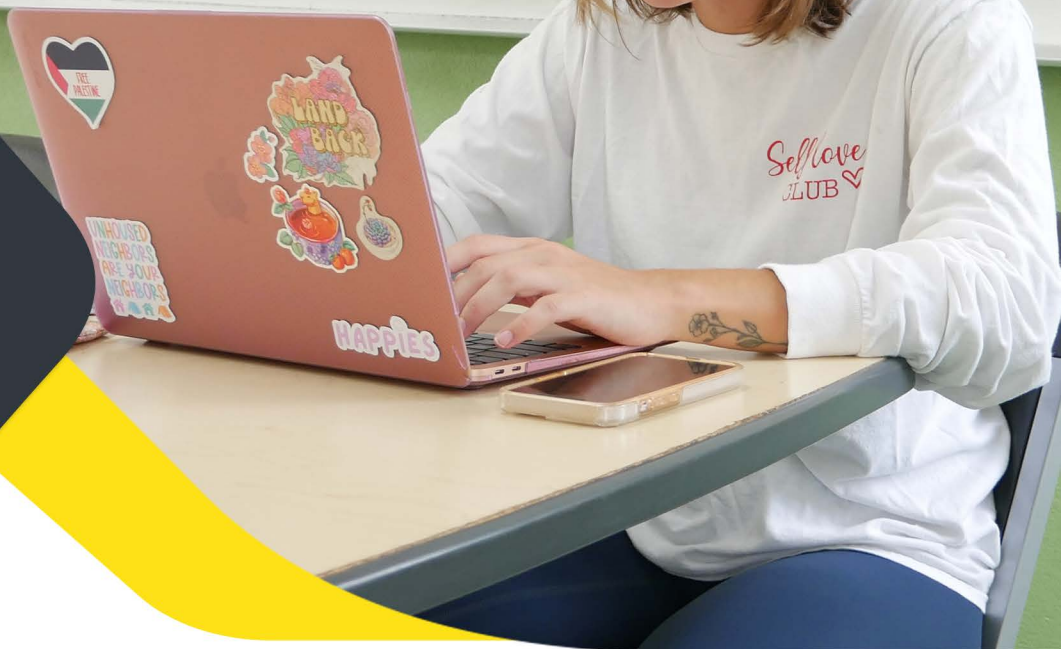
Website: [www.cavehill.uwi.edu/international](http://www.cavehill.uwi.edu/international)



THE UNIVERSITY  
OF THE  
WEST INDIES  
CAVE HILL CAMPUS  
BARBADOS, WEST INDIES

2

# EXCHANGE PROGRAMME INFORMATION SHEET 2024-2025



## LANGUAGE OF INSTRUCTION

English is the language of instruction at The UWI. Students must show evidence of their ability to follow the programme in English.

## PROGRAMME LEVELS AND RESTRICTIONS

Exchanges are generally opened to undergraduate and graduate students.

Graduate students should confirm that their university is included.

Exchange Students are not permitted to register for courses in the following programmes

- Faculty of Medical Sciences - Undergraduate MBBS programme and all Graduate programmes
- Cave Hill School of Business (Graduate programmes)
- Nursing

## COURSE INFORMATION

Updated information on courses offered each semester will be available at [www.cavehill.uwi.edu/cho1](http://www.cavehill.uwi.edu/cho1) (see the class schedule. Use the semester from the previous academic year as a guide).

## COURSE DESCRIPTIONS

Information on course descriptions may be found at [www.cavehill.uwi.edu](http://www.cavehill.uwi.edu) (see the course catalog).

## STUDENT VISA REQUIREMENTS

All non-Barbadian students are required to apply for a student visa to the Barbados Immigration Department through the Cave Hill Campus. Students should check to confirm whether they also require an entry visa to Barbados

([www.foreign.gov.bb/wp-content/uploads/2022/08/Updated-visa-list-August-2022.pdf](http://www.foreign.gov.bb/wp-content/uploads/2022/08/Updated-visa-list-August-2022.pdf))

## HEALTH INSURANCE

All exchange and study abroad students are registered in the Campus' Student CariCARE Health Plan on payment of the mandatory University Fees. This insurance provides coverage for routine medical care and any medical emergencies during their studies at The UWI Cave Hill, Barbados.

## SERVICES AVAILABLE

- Pharmacy
- Student Shuttle
- Campus App
- Student Health Clinic
- Sporting Facilities including a student gym
- Student Union
- Student Health Insurance
- Sporting Facilities including a student gym
- Counselling: Clinical, Psychological and Career



THE UNIVERSITY  
OF THE  
WEST INDIES  
CAVE HILL CAMPUS  
BARBADOS, WEST INDIES

3

# EXCHANGE PROGRAMME INFORMATION SHEET 2024-2025

## TUITION AND OTHER FEES

Tuition Fees for students coming under an exchange programme are paid to the student's home institution. However, all registered students are required to pay mandatory University Fees to the Cave Hill Campus. These fees include a Student Guild Fee, Student Amenities Fee and ID Card fee. Full details regarding fee payments will be provided to students in their letter of acceptance documents.

Study Abroad students coming to the Cave Hill Campus under other agreements and Free Moving students will be required to pay Tuition Fees along with the mandatory University Fees.

## ACCOMMODATION

\*\*(Fees are used as a guide and are subject to change for the 2024-2025 academic year).  
Current fees will be communicated to students directly by the Halls Administration Office.

### On-campus:

#### Frank Worrell and Sherlock Halls

- Semester I - US\$1512.50
- Semester II - US\$1537.50

#### Keith Hunte Hall

- Semester I - US\$2722.50
- Semester II - US\$2767.50

### Off-Campus:

- Approximately US\$300 - \$400 per month

## CAMPUS SHUTTLE SERVICE

The University Student Shuttle Service offers free transportation for students to Bridgetown and the general areas around the campus.

RELATED  
INFORMATION



@visitbarbados  
@serucavehill

@cavehillinternational  
@cavehillguild



THE UNIVERSITY  
OF THE  
WEST INDIES  
CAVE HILL CAMPUS  
BARBADOS, WEST INDIES

# EXCHANGE PROGRAMME INFORMATION SHEET 2024-2025



## Accommodation

\*\*(Fees are used as a guide and are subject to change for the 2024-2025 academic year. Current fees will be communicated to students directly by the Halls Administration Office)

### On-campus:

#### Frank Worrell and Sherlock Halls

- Semester I - US\$1512.50
- Semester II - US\$1537.50

#### Keith Hunte Hall

- Semester I - US\$2722.50
- Semester II - US\$2767.50

### Off-Campus:

- Approximately US\$300 - \$400 per month

## Campus Shuttle Service

The University Student Shuttle Service offers free campus shuttle service for students.

## RELATED INFORMATION

Living in Barbados Student Guild - [www.visitbarbados.org/](http://www.visitbarbados.org/)  
- [www.instagram.com/cavehillguild/](https://www.instagram.com/cavehillguild/)