

**STUDY ABROAD**  
**NORWICH | UK**

**UEA**  
University of East Anglia

# **STUDY AT THE UNIVERSITY OF EAST ANGLIA**

**RICH WITH CULTURE  
AND COMMUNITY**





One of the  
**BEST PLACES  
TO LIVE**  
in the UK  
The Sunday Times 2024



Norwich is a beautiful, classic English city. It was everything I imagined to be wonderful about England: cobblestone streets, architecture from different time periods, gorgeous big trees, and squirrels, of course!

Anna-Rose – Deakin University, Australia



## DISCOVER NORWICH

# QUINTESSENTIALLY BRITISH

Norwich is a bustling city with a big heart and a global and diverse community, just 20 minutes from the UEA campus. UEA is the perfect choice if you're looking for a multicultural, friendly university in a beautiful city with character and fascinating medieval history.

Regularly voted one of the best places to live in the UK, Norwich embraces the fresh

perspectives that students bring and is welcoming, accessible and eclectic.

Norwich is a hidden gem, a city of stories with art, creativity and culture in abundance. Its city centre blends the old with the new and is an incredible place to live, study and explore. Norwich will give you a true taste of British living.



It's easy to explore the towns and scenery of Norfolk. London is only two hours away and Cambridge is within easy reach, with direct links to both places by train and coach.

Alba – Nebrija University, Spain



### FIVE REASONS TO CHOOSE NORWICH AND BEYOND

- Eat fish and chips by the sea
- Cycle through the countryside
- Enjoy the bustling café culture and night life
- Wander the cobbled streets and explore the castle
- Browse independent shops and famous brands



### DISCOVER NORFOLK

## NORWICH AND BEYOND...

Norwich is a city located in Norfolk, a beautiful part of England offering big skies, green spaces and a warm welcome.

With a National Park and areas of outstanding natural beauty, stunning beaches, stately homes and a royal residence, Norfolk is somewhere that will stay with you long after you leave.

A short bus ride will take you to beautiful English villages surrounding the city. We're also just two hours from London, and half an hour from 90 miles of stunning Norfolk coastline. The area is a great base from which to travel to the rest of the UK and Europe by road, rail or air.



UK TOP 25  
**UNIVERSITY**

Complete University  
Guide 2024



UEA's campus fosters an  
incredible sense of community  
that I have never experienced  
anywhere else.

Nicole, Simon Fraser University, Canada



UK TOP 20  
**FOR RESEARCH  
QUALITY**

Times Higher Education  
REF2021 Analysis



WORLD TOP 20  
**FOR RESEARCH  
CITATIONS**

Times Higher Education  
World University Rankings 2023

**DISCOVER UEA**

## THE PERFECT CHOICE

Whether you're considering the UK to study abroad for a summer, a semester or a whole year, UEA is ready to welcome and support you.

We're at the heart of the Norwich Research Park, one of Europe's largest collaborative research parks, and home to some of the finest minds and best facilities in the world.

Our teaching is designed to inspire and challenge you, with interactive classes, real-world research and exciting projects to become immersed in.

You'll join over 3,500 international students from more than 100 countries, along with the 17,000 students who live and learn here together. And you'll become an important member of our community – it's the people that make UEA unique.

Wherever you're from, we'll nurture your talent and help you develop and succeed – making your time abroad the most memorable part of your degree.



WORLD TOP 100  
**SUSTAINABILITY  
IMPACT**

Times Higher Education  
Rankings 2024





UEA  
**SAFE ZONE**

24/7 on-campus security presence  
365 days a year



The Sportspark is great. I loved experimenting with different sports in the open sessions.

Silvia – LUISS, Italy

**CAMPUS COMMUNITY**

**FRIENDLY, FUN AND SAFE**

Making new friends and gaining new experiences is a huge part of studying abroad. Our campus is a multicultural community with a varied social and cultural scene. Set in acres of parkland, UEA was designed so that everything you need for living and studying is just a few minutes away.

**Clubs and societies**

Our Students' Union offers over 250 clubs and societies covering a wide variety of extracurricular interests.

**Staying healthy**

Our Sportspark has an Olympic-sized swimming pool, astro pitches, squash and tennis courts, an athletics track, climbing wall, fitness centre and more.

**24/7 Library and study spaces**

Our library has over 800,000 books and journals, is open 24/7 and offers flexible individual and group study spaces.

**Cutting-edge art gallery**

The internationally renowned Sainsbury Centre is home to world-class art collections and exhibitions. It's housed in an iconic building designed by British architect Norman Foster, and has featured as The Avengers' Headquarters in the Marvel film franchise.

**Cafés and shops**

The Street allows you to stock up on essentials, do your laundry, fix your bike, get a haircut, and grab a coffee and something to eat.

**Live music**

The LCR is a live music venue run by the Students' Union. It hosts over 50 gigs a year, attracting big names from across the world.

**Place of worship**

The Faith Centre welcomes all denominations.



Home to  
**STUDENTS  
OF OVER 100  
NATIONALITIES**





UEA is a truly unique place. The campus is great and the locals are friendly... My time here has been life-changing in infinite ways.

Tavish – Goucher College, USA



## SUPPORT

# WE'RE HERE TO HELP

We recognise that studying abroad can be daunting, so we have dedicated teams to support you.

### UEA Study Abroad Team

We're here to help you with everything from initial questions through to completion of your time with us. We organise regular social activities for you to connect with other students, ranging from quiz nights to treasure hunts, and community events supported by UEA student ambassadors who have studied abroad too.

### Wellbeing Team

UEA Student Services is committed to enhancing your study abroad experience with a team of professional advisers looking after your wellbeing. Additionally, our Student Services Residents live on campus, offering support and ensuring you feel at home every step of the way.

### Student Life Team

UEA Student Life advisers are dedicated to supporting international students with immigration and visa advice, personal and welfare advice and general guidance about studying in the UK.

# EVERYTHING WITHIN EASY REACH

## NORWICH INTERNATIONAL AIRPORT

25 mins by bus

## CITY CENTRE

20 mins by bus

## THE BROADS

The Norfolk Broads  
National Park

## THE COAST

90 miles of coastline  
and stunning beaches

## TRAIN STATION

30 mins by bus

## PARKS

Eaton Park and café

## ACCOMMODATION

Off-site

## HEALTHCARE

Medical and  
dental practice

## ACCOMMODATION

On-site

## SPORTSPARK

Fully equipped  
sports facilities

## ENTERPRISE CENTRE

Local business  
innovation hub

## LIBRARY

Open 24/7

## MUSIC

Over 50 concerts  
a year

## NATURE

Beautiful countryside  
on your doorstep

## SQUARE

Cafés, shops  
and post office

## SCIENCE

New labs and  
research space

## ART

Sainsbury Centre

## GREEN SPACES

Earlham Park

## LONDON

Two hours by train

## HOSPITAL

Norfolk and Norwich  
University Hospital



My lecturers went above and beyond to make sure that, as a study abroad student, I was equipped and provided with support to ensure that I could succeed to the same level as the home students.

Natalie – Macquarie University, Australia



## STUDYING AT UEA

# ACADEMIC LIFE

With many different classes to choose from, you can select modules that fit with your studies back home, or explore a completely new subject.

A class at UEA is known as a module. Modules may be comprised of one or more of a number of different elements: lectures, seminars/tutorials, workshops, lab work, studio time and field work.

A complete list of modules can be found on our website, and areas of study are highlighted on the following pages. Enrolment is subject to module availability and your academic background.

Undergraduate modules come in three levels: level 4 (first year); level 5 and level 6 (final year). Depending upon module enrolments, classroom contact time may be between 2-8 hours per module per week. The number of credits to study each semester at UEA is 60 UK credits, which

is equivalent to 30 ECTS (European Credit Transfer and Accumulation System).

UEA's academics actively integrate their own research into their modules, providing students with an opportunity to learn about the very latest discoveries in their academic fields.

Interdisciplinarity and collaborative projects are central to our research and teaching philosophy – you can take an interdisciplinary approach when studying at UEA by combining classes from different schools of study.

### Academic support

UEA's Learning Enhancement tutors provide expert guidance on study skills, maths and statistics, academic writing and use of English, while our academic advisers will help you get the most from your studies.





I think this is an incredible place to study writing, to study creative arts, and to figure out who you are and what it is that you want to do with your life.

Joe Russo, acclaimed American filmmaker and screenwriter, on his time studying abroad at UEA

© David Kirkham



# ARTS AND HUMANITIES

With its vibrant arts scene and status as a UNESCO City of Literature, Norwich is a fantastic backdrop to your study of Arts and Humanities.

UEA is a place for the courageous and the compassionate – for those who can think critically, communicate clearly, act creatively and listen carefully. We cultivate inclusivity, as well as ambition.

Engaging with people beyond the academic world is an essential part of our Arts and Humanities faculty: communicating with the public is at the heart of all the research we undertake, and we are proud to be an active part of cultural events locally, nationally and globally.

## AVAILABLE SUBJECT AREAS:

- History
- Philosophy
- Art History
- Media Studies
- Communication
- Creative Writing
- English Literature
- American Studies
- Film and Television
- Languages and Translation
- Politics and International Relations



UEA'S

## CREATIVE WRITING

graduates have won or been shortlisted for every major UK literary award





My favourite module was ‘Cancer Biology’ for its in-depth exploration of cellular mechanisms. It was taught by several specialist lecturers, and students were able to gain in-depth understanding of the topic.

Pere – Universitat Rovira I Virgili, Spain



## SCIENCE

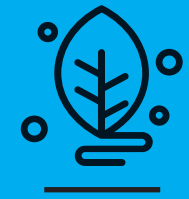
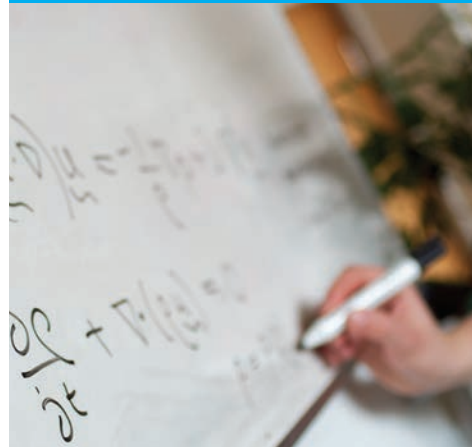
UEA sits at the heart of the Norwich Research Park – one of Europe’s largest collaborative research sites – with opportunities for students to learn from top researchers and innovators.

With high quality, research-led teaching, our students are given opportunities to get involved with the real-life research which underpins our activities – from influencing government policy to giving presentations at local schools.

Our research strengths are wide-ranging, thanks to the variety of research groups and centres on and around campus. These include the Tyndall Centre for Climate Change Research, the John Innes Centre, the Wolfson Materials and Catalyst Centre, the Biophysical Chemistry Group and the Cancer Studies Group.

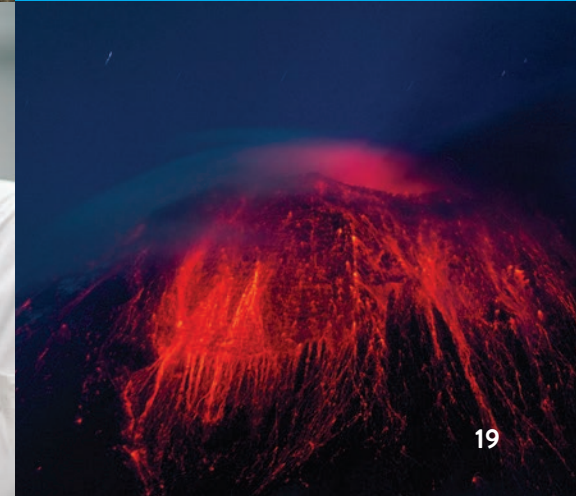
### AVAILABLE SUBJECT AREAS:

- Biological Sciences
- Chemistry
- Computing Sciences
- Environmental Sciences
- Engineering
- Mathematics and Actuarial Science
- Physics



**11TH IN THE UK  
FOR LIFE SCIENCES**

The Times/Sunday Times  
Good University Guide 2023





UK TOP 15  
**FOR  
ACCOUNTING  
AND FINANCE**

The Guardian University Guide 2023



# SOCIAL SCIENCES

Our Social Sciences faculty is at the forefront of academic and professional development, with students able to benefit from outstanding study facilities and boundary-pushing research.

UEA has a regional business hub in one of the greenest buildings in the UK, the Enterprise Centre, nurturing UEA's academic connection to the thriving local business community. Our law school is housed in the beautiful historic Earlham Hall surrounded by peaceful green spaces.

The faculty is home to seven schools of study, each collaborating to make a real difference to individuals, communities, policy makers and organisations, both in the UK and internationally.

Employability is the backbone of our curriculum. Each course's syllabi are rich in real world examples and with opportunities for students to experience how the subject and its methods are applied. Guest lecturers from graduate employers also contribute to the content of some of our modules.

### AVAILABLE SUBJECT AREAS:

- Business
- Economics
- Education
- Global Development
- Law
- Sociology
- Psychology



UK TOP 20  
**FOR  
ECONOMICS**

The Guardian University Guide 2024



WORLD TOP 20  
**FOR DEVELOPMENT  
STUDIES**

QS World University  
Rankings by subject 2024



# HOW TO APPLY

## Exchange students

If your home university has an exchange agreement with UEA, you may be eligible to study at UEA for a semester or a full year. Your home university will need to nominate you as an exchange student. Once nominated, you will be sent details about how to apply.

## Fee-paying students

If your home university is not currently one of our exchange partners, or you cannot apply as an exchange student, you can study at UEA as a fee-paying student. You'll need to apply and enrol directly with UEA via our study abroad webpages, or through a study abroad provider. Please check with your home university or our team at [visiting.uea@uea.ac.uk](mailto:visiting.uea@uea.ac.uk) to find out more.

## Academic entry requirements

Applicants must have completed an academic year of study at their home university and be in good academic standing with a grade equivalent to a UK upper second class (60%).

Independent fee-paying students (not from a study abroad partner university) who apply without being nominated, need an academic reference from their home university.

## English language requirements

Students from English-speaking countries and those studying in the US do not need to provide proof of English language proficiency. All other applicants must demonstrate a minimum level of English, as explained on our website.



## Tuition fees

Exchange students pay no tuition fees to UEA (you will pay tuition fees to your home university). Fee-paying study abroad students pay UEA's international tuition fees, which you can find on our website. Fees include tuition, registration and exams. Some fee-paying students may be eligible for a tuition fee discount – please contact your home university or email [visiting.uea@uea.ac.uk](mailto:visiting.uea@uea.ac.uk) for more information.

## Other fees

You will be responsible for other costs, such as accommodation, living and travel expenses as well as any extra study-related costs such as field trips.

## Apply for accommodation

As part of the study abroad application process you will be sent instructions on how and when to apply for accommodation at UEA.

UEA's study abroad team will provide you with support throughout the application process. For information about visa and insurance requirements please visit our website or contact us.

## Semester dates

### Autumn Semester:

- Orientation in September
- Teaching from September to December
- A four-week Christmas break in December/January
- Assessments until January (online for Autumn-only students)

### Spring Semester:

- Orientation in January
- Teaching from January to May
- A four-week Easter break in March/April
- Assessments in May and June (online and in-person)

**For further details about dates please check here**

## CONTACT DETAILS

**UEA study abroad website:**  
[Visit www.uea.ac.uk/studyabroad](http://www.uea.ac.uk/studyabroad)

**UEA study abroad email:**  
[visiting.uea@uea.ac.uk](mailto:visiting.uea@uea.ac.uk)





My study abroad highlight was most definitely the friends I made from the accommodation I stayed in.

Jacintha, Florida International University – USA



## ACCOMMODATION

# A HOME TO SUIT YOU

Norwich is an affordable city in which to live: it's 49% less expensive than London, with rents 60% lower (Numbeo 2024). We have a range of on- and off-campus accommodation options, offering a variety of sharing arrangements.

### On campus

Our on-campus accommodation boasts beautiful views of green spaces and the UEA lake. You'll find somewhere to call home within walking distance of your classes.

### In the heart of the city

If you prefer city living to campus life, you can live in the heart of Norwich in modern, high-quality student accommodation – or you can opt for private rental accommodation.

### Homestay

Students also have the option to live in homestay accommodation in Norwich, which is a fantastic opportunity to experience life with a local family, experience British culture and practice your English.

## INCLUSIVITY

# WELCOMING AND POSITIVE

UEA is committed to accessibility and inclusive study and working conditions. We invest in supporting the entire university community and maximising everyone's positive involvement with student life on campus.

### English language support

The English Language Support Programme (ELSP) aims to help UEA international students develop the English language skills necessary for successful academic study. The classes are free and open to all students who speak English as a second or additional language.

### Student services

We offer a disability support service for all students with a physical or mental disability, or a Specific Learning Difference.

### LGBTQ+ community

We have a thriving Pride network and fast-growing networks of LGBTQ+ allies. Students who'd like to find out more about LGBTQ+ in Norwich, including safe spaces for LGBTQ+ people, can connect with advisory groups including UEA Students' Union Pride Society.



Norwich is a very special place. It's a place where nobody is excluded.

Kash – current UEA degree student, Biological Sciences





LEARN. EXPLORE. TRAVEL.

## SUMMER IN NORWICH

Norwich is a fantastic place to experience during the UK summer and we offer a range of short-term study options throughout July and August.

### Pathways to sustainability

Join UEA for our summer school. Choose from 2 and 4 week accredited modules (10, 20 and 25 credit options).

The course focusses on multidisciplinary approaches to sustainability and is open to students from all subject areas.

You'll be able to study with students from around the world on projects that focus on key areas of sustainable development, enhance your graduate employability skills, enrich your global citizenship and give your CV a boost.

There are preferential rates if you're a student at one of our study abroad partner schools, colleges and universities. Contact us to find out more.

### UEA Summer University

We also run credit and non-credit courses to complement your current studies. This could be a work-integrated learning programme, school-led programme, English language programme or a customised programme. Speak to your home university to see whether there are arrangements in place already.

[www.uea.ac.uk/summer-university](http://www.uea.ac.uk/summer-university)  
[summer.university@uea.ac.uk](mailto:summer.university@uea.ac.uk)



If you're still hesitant, I just want to say take this incredible opportunity and GO FOR IT. Take the next step and just make the most of it. You'll have an incredible year!

Letizia – Université de Lausanne, Switzerland

We are in  
**NORWICH**

**City centre**  
20 mins by bus



**The beach**  
45 mins by bus



**London**  
2 hours by train



**Amsterdam**  
60 mins by plane



**Paris**  
5 hours by train



**EDINBURGH**

**MANCHESTER**

**UEA**

**NORWICH**

**LONDON**

**Find out more**

[uea.ac.uk/studyabroad](http://uea.ac.uk/studyabroad)