



Setting up File Browser to map and explore your network (w: drive) folders.

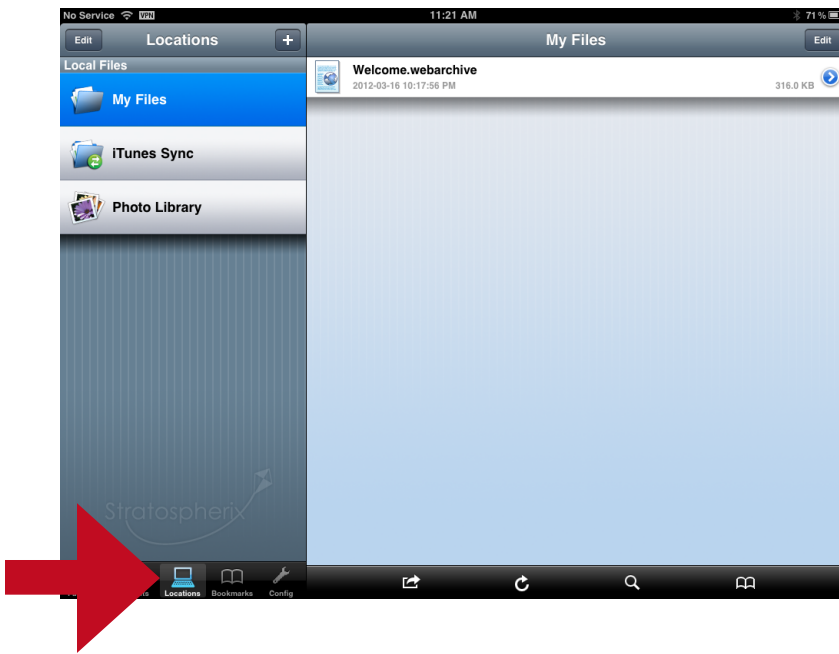
FileBrowser is a paid app that can be purchased from the app store. The price is currently 4.99 USD

The app also comes with extensive documentation and help files, as well as more support online. This document will concentrate on connecting to Carleton University's specific network drives.



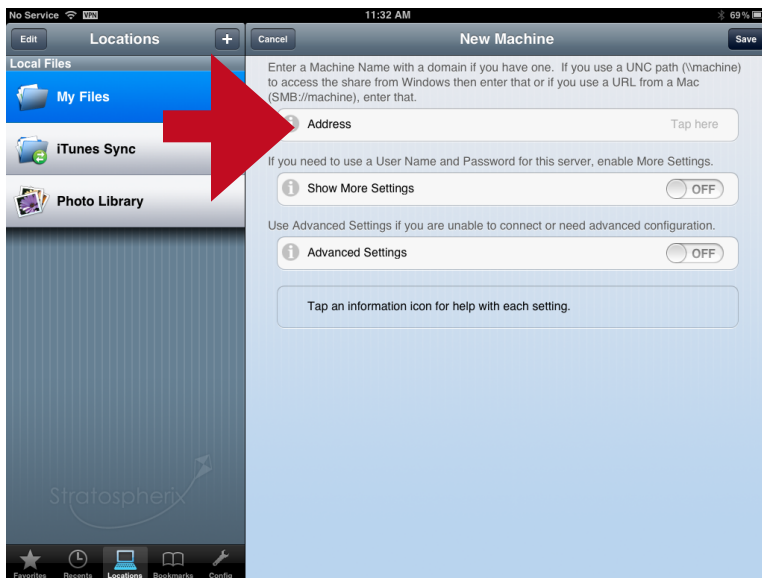
Help files and documentation included with the paid app.

First off you need to connect to the Carleton VPN. See "VPN Configuration for iPad" for help setting up your VPN connection.



This is the initial screen to set up your network connection. Click the locations button in the bottom of the left hand panel to pull up the view as shown.

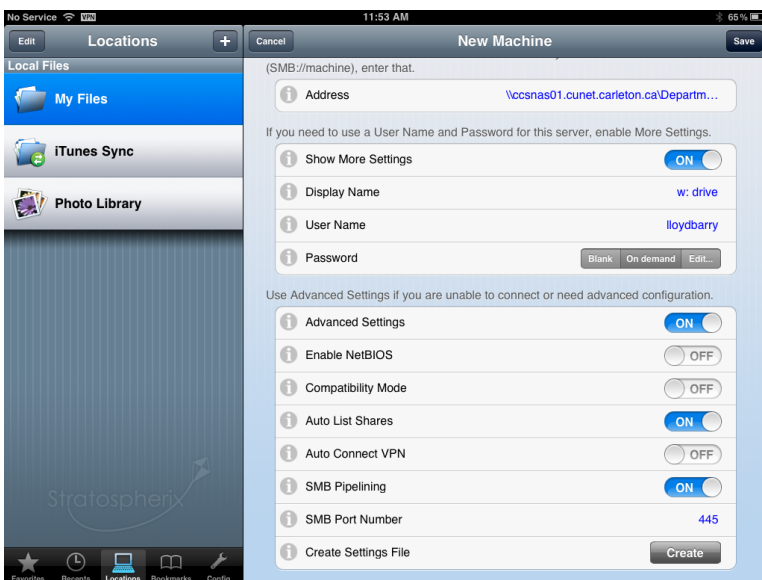
Click the '+' button (at the top of the Locations side bar) to add a new network location.



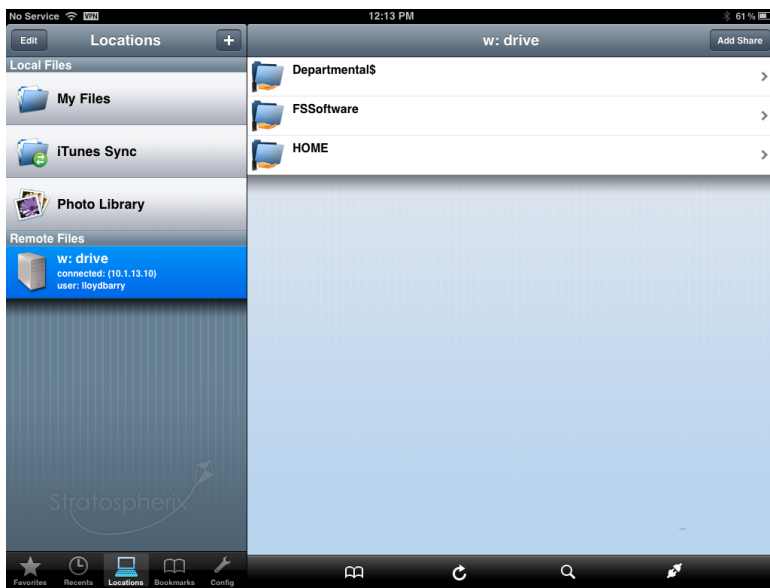
Tap the 'Address' field to enter in your server address in the form:

`\\CCSNAS01.cunet.carleton.ca*`

* = your departmental drive name



Press save to complete the configuration.



Your new drive mapping is now ready for use! Press the bar under 'Remote Files' and enter in your password, and you will be connected to your departmental share.