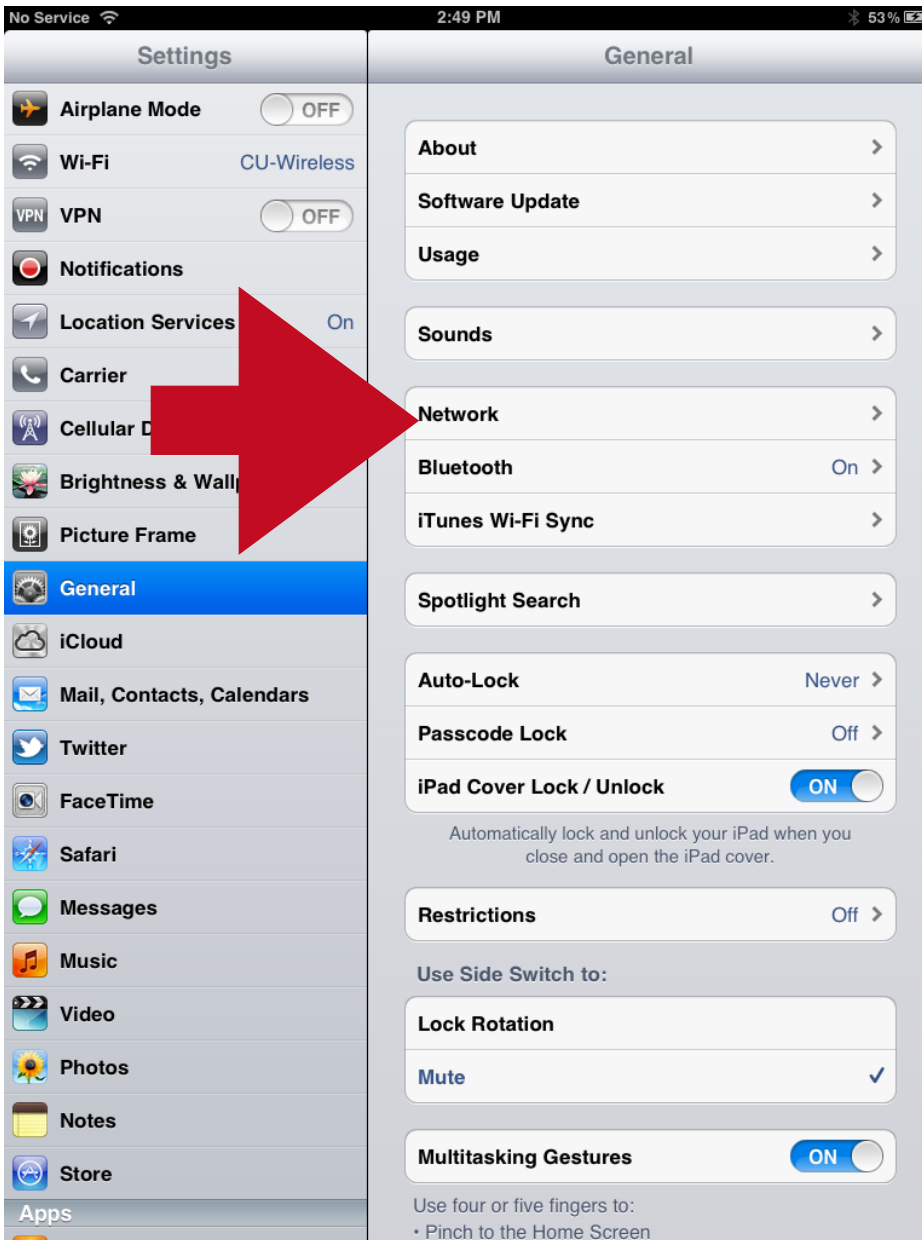


Carleton VPN Connection Instructions



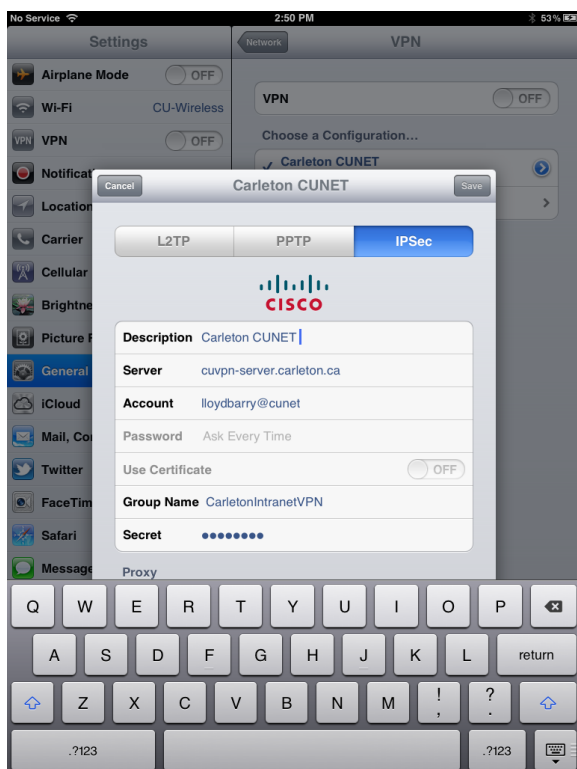
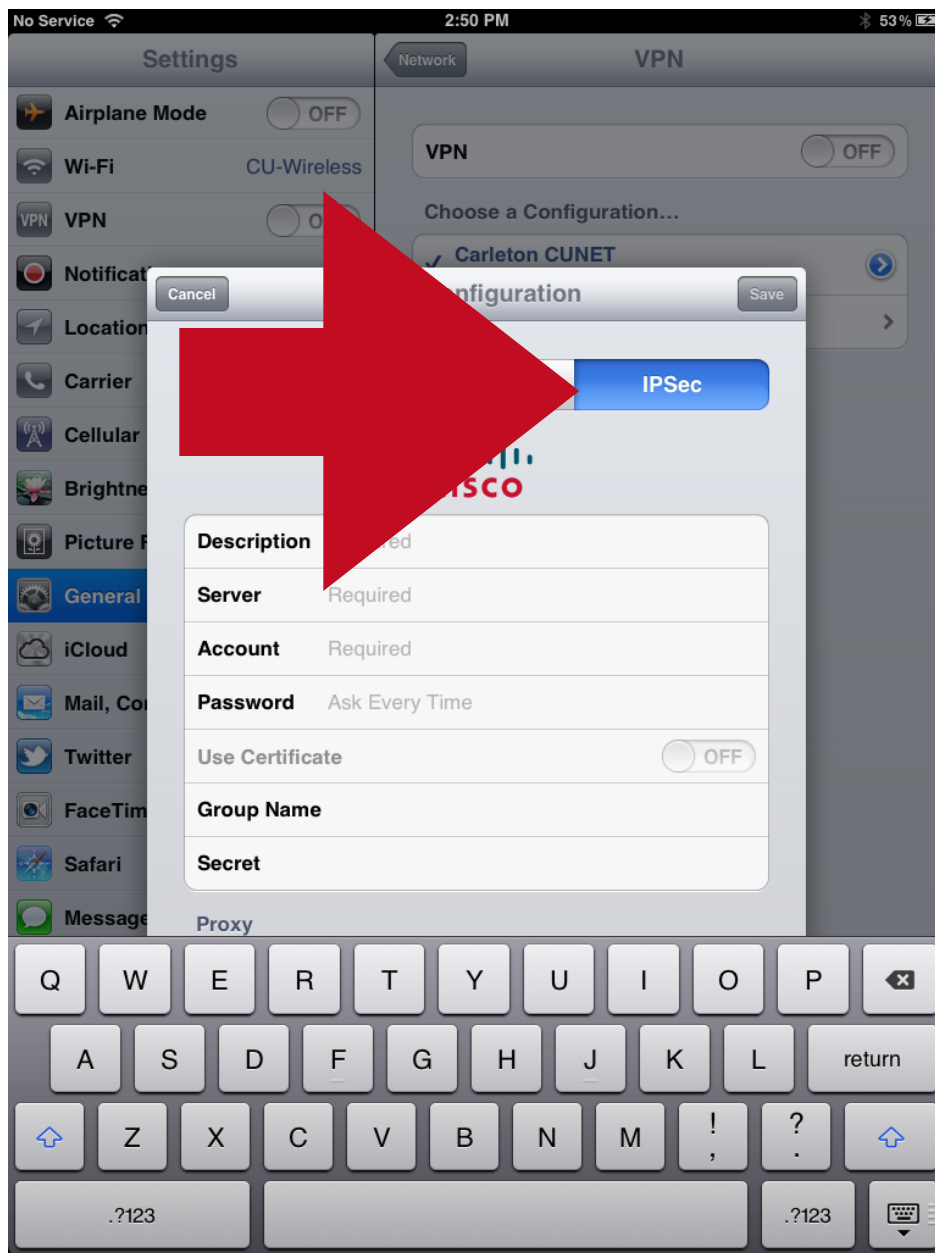
In settings, select **General** and then **Network**



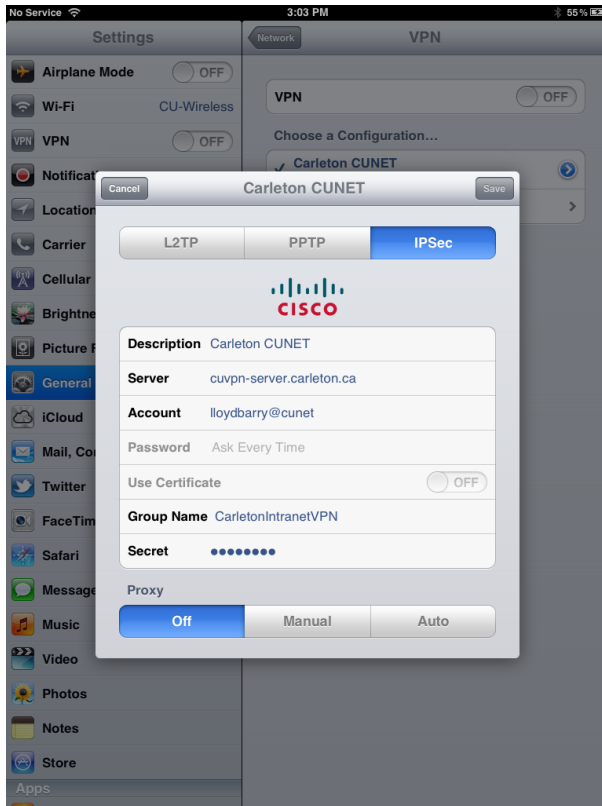
Then select VPN



On the 'add configuration' screen select **IPSec**

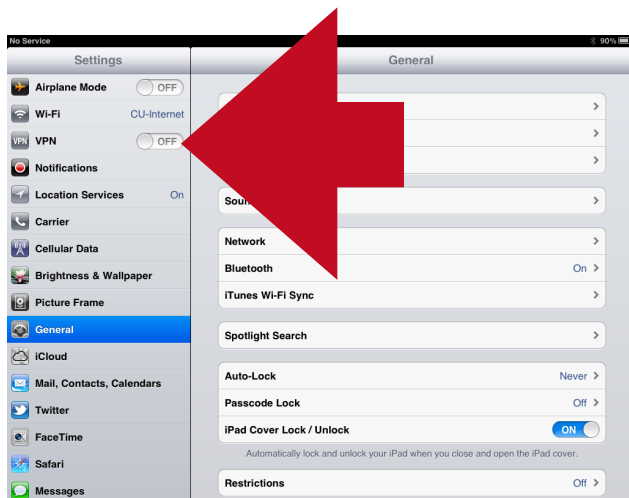


Fill in the blanks with the information shown below
The 'secret' blank is:
vgy74rgb

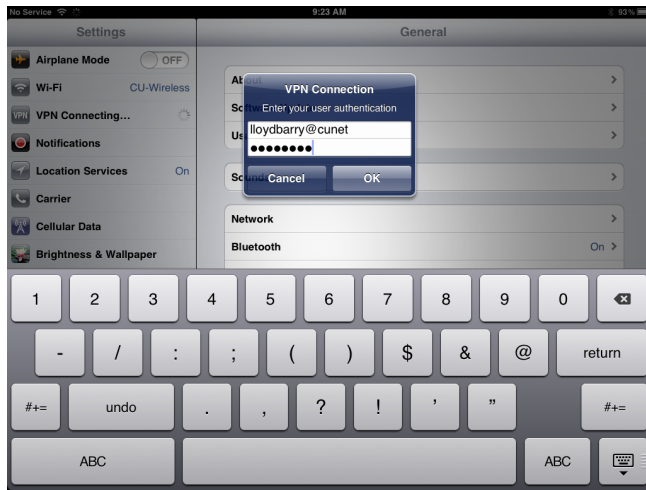


Press save when done. Your password field should be set to 'ask every time' and your password is your current CUNET or MC1 password.

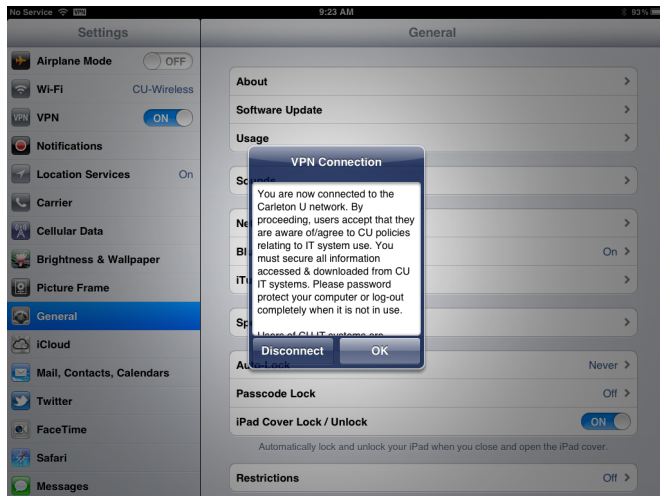
To connect to VPN once the configuration settings are complete:



In settings, slide the switch to 'on' in the VPN bar



You will be prompted for your password:



After you enter your credentials, you will be greeted by this pop up message.

Congratulations, you have connected your iPad to Carleton's VPN!