

Babchishin, K. M. (2025, August). Exploring the risk factors for sibling- and father-perpetrated sexual abuse. IATSO conference, Poznań, Poland.

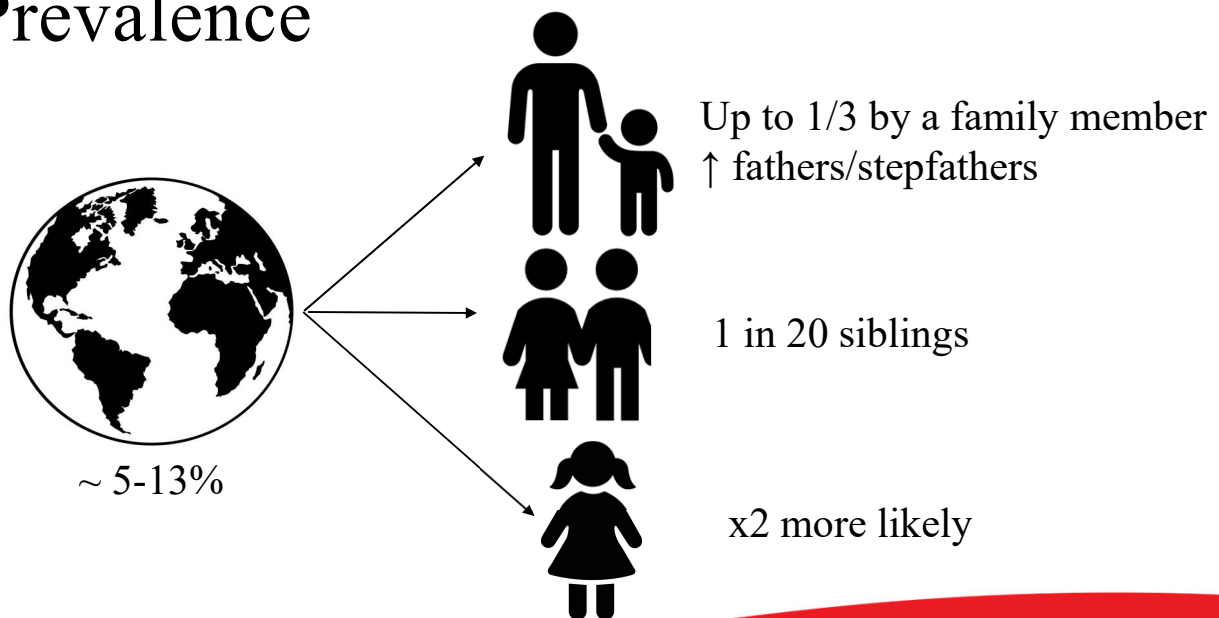
# Exploring the risk factors for sibling- and father-perpetrated sexual abuse

Chair: Kelly M. Babchishin



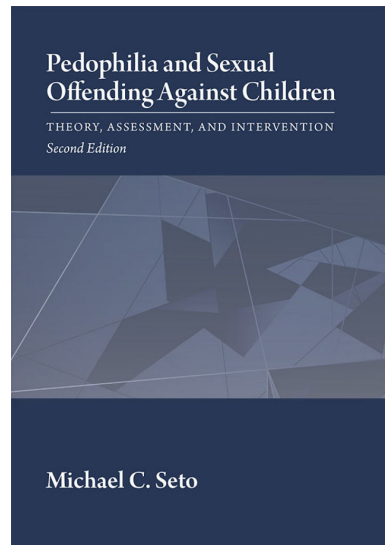
1

## Prevalence



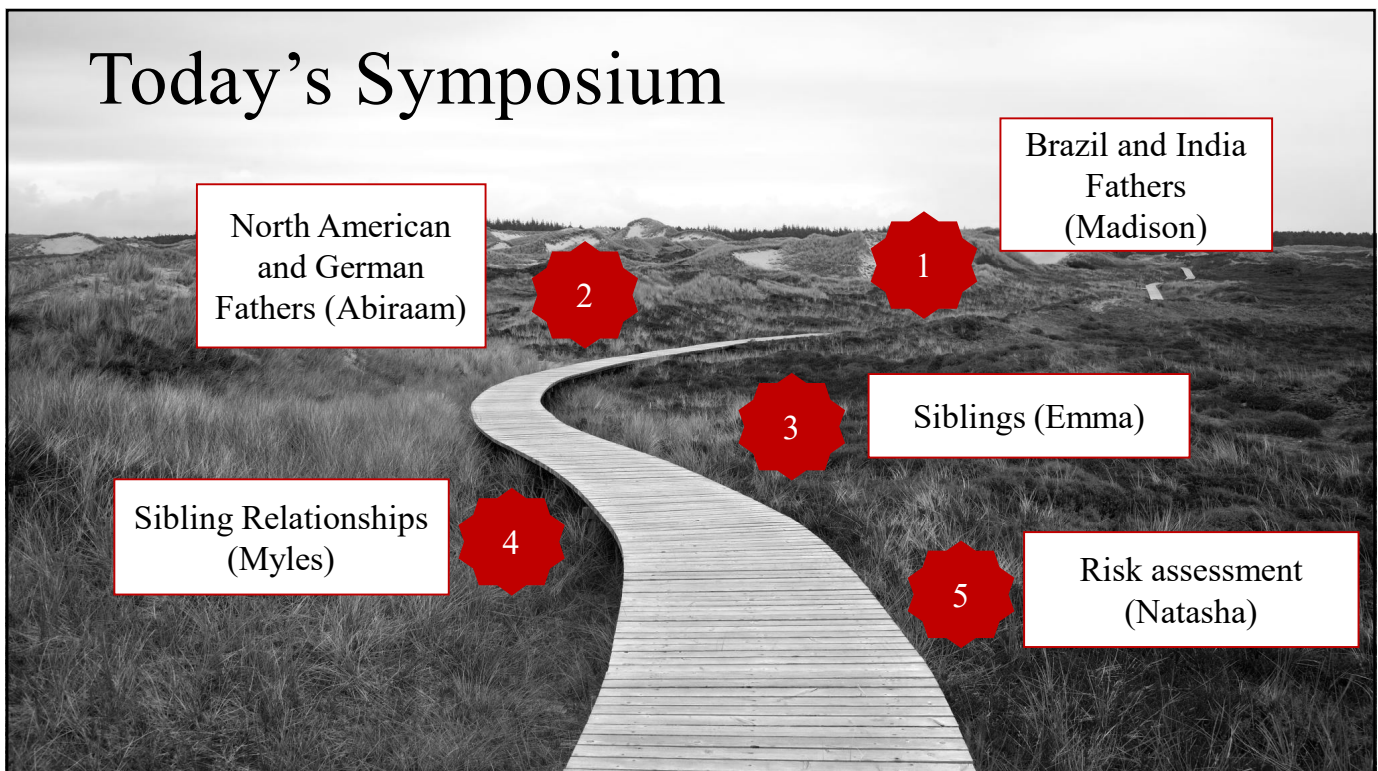
2

## Why?



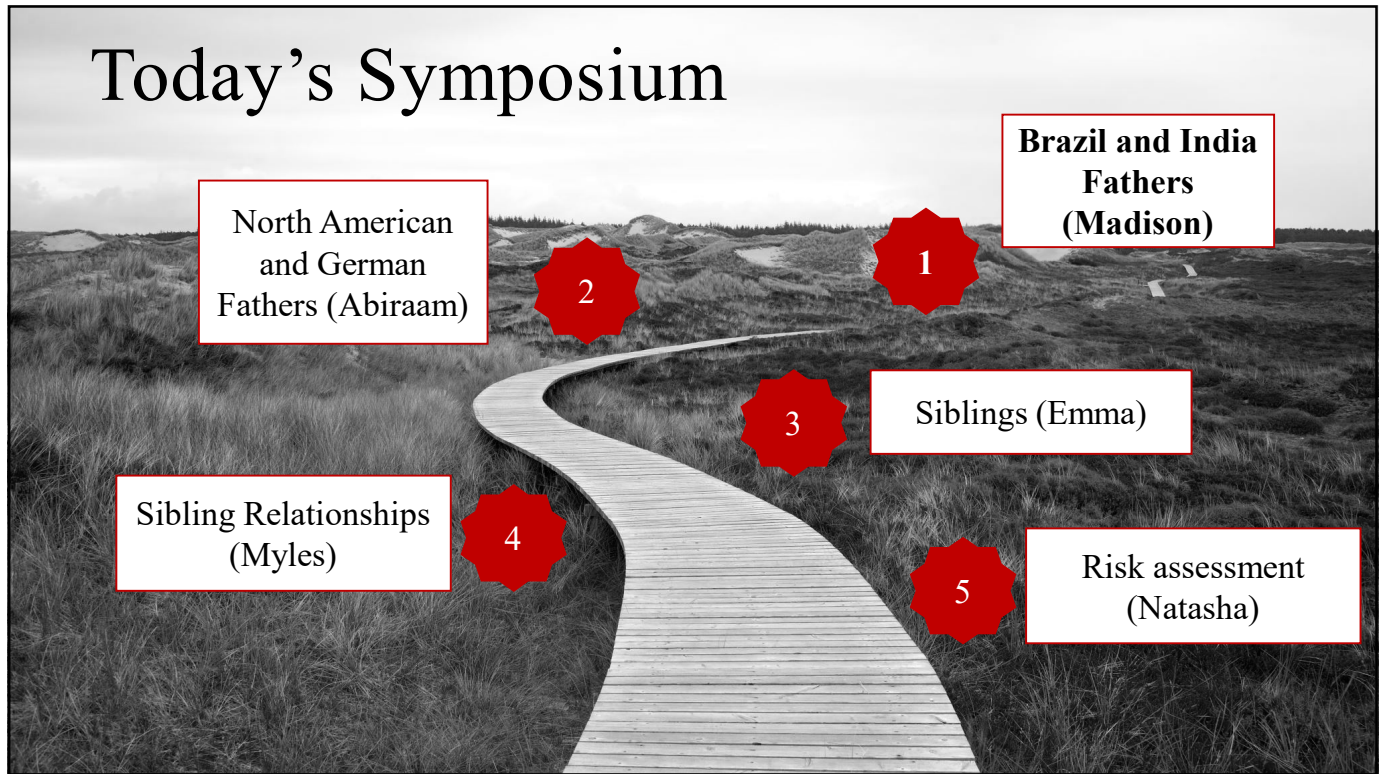
3

## Today's Symposium



4

# Today's Symposium



5

Madison McAskill,  
Kelly M.  
Babchishin,  
Abiraam  
Samithamby, &  
Michael C. Seto

## Testing explanations for incest among a large sample of fathers from Brazil and India

University of Ottawa  
Institute of Mental  
Health Research

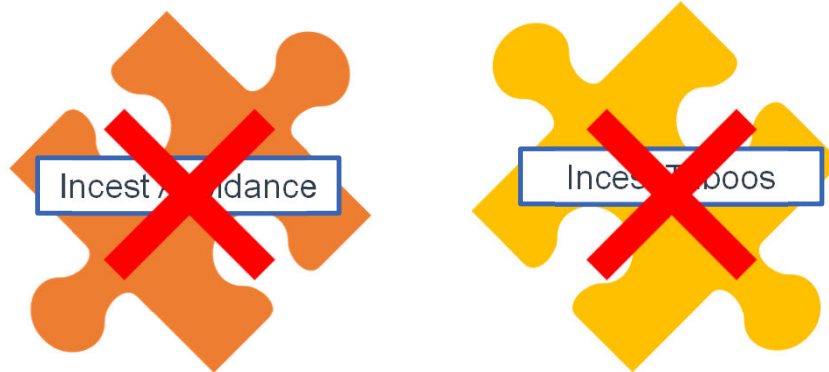
Carleton  
University

SSHRC CRSH

6

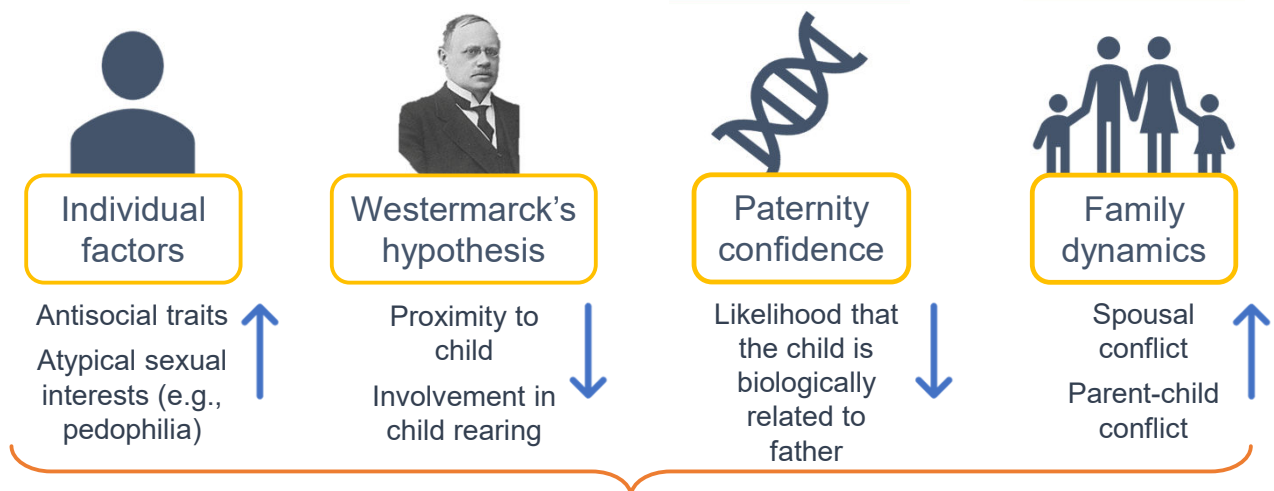
## THE PUZZLE OF INCEST

Occurs despite evolutionary mechanisms meant to prevent it:



7

## EXPLAINING FATHER-DAUGHTER INCEST



Can these factors explain propensity for incest among fathers?

8

## METHOD

- Online survey of two market panel samples:
  - IPSOS Brazil (N=1200)
  - IPSOS India (N=1325)
- Eligibility = fathers with **at least one daughter**

- Items based on **explanations for incest**
- Questions about **vignette** depicting father-daughter incest (**outcome variable**)
- **Viewing time (VT) task**



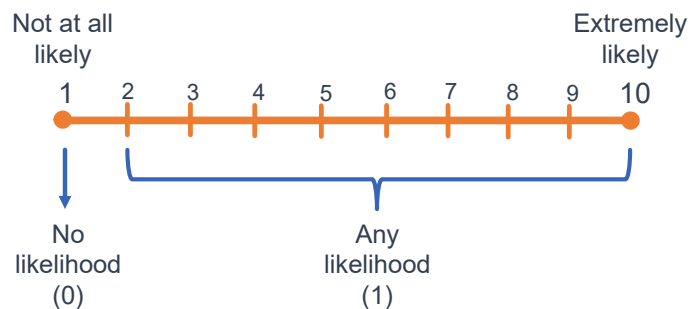
9

## FATHER-DAUGHTER INCEST PROPENSITY

### Incest vignette

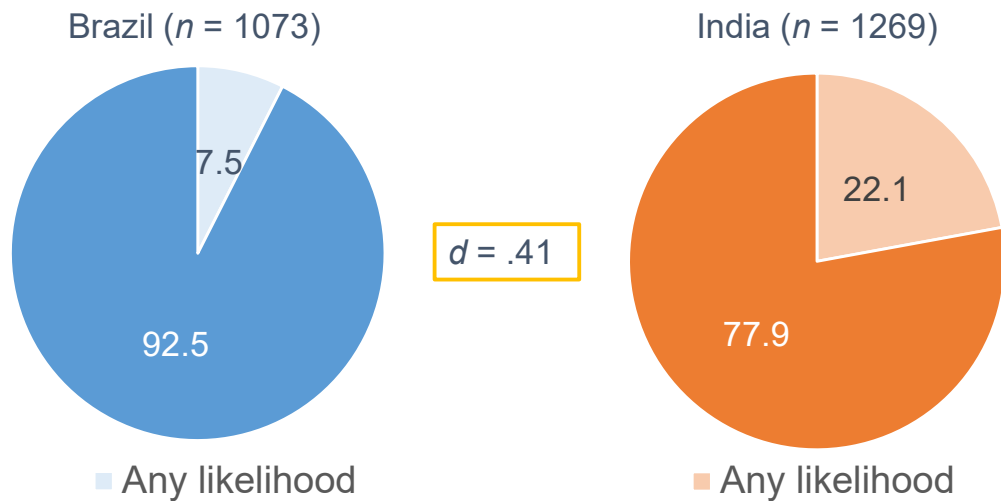
Márcio/Jitesh is alone with his 10 year old [step]daughter, Carolina/Meeta, in their home on a Friday evening. They are sitting next to each other on the couch and watching a movie. Márcio/Jitesh has a bowl of popcorn in his lap. Carolina/Meeta reaches her arm with the intention of grabbing some popcorn from the bowl. **Instead, she touches his genitals and starts caressing them.**

"If you were in a similar situation, how likely would you be to encourage continued sexual contact with your daughter?"



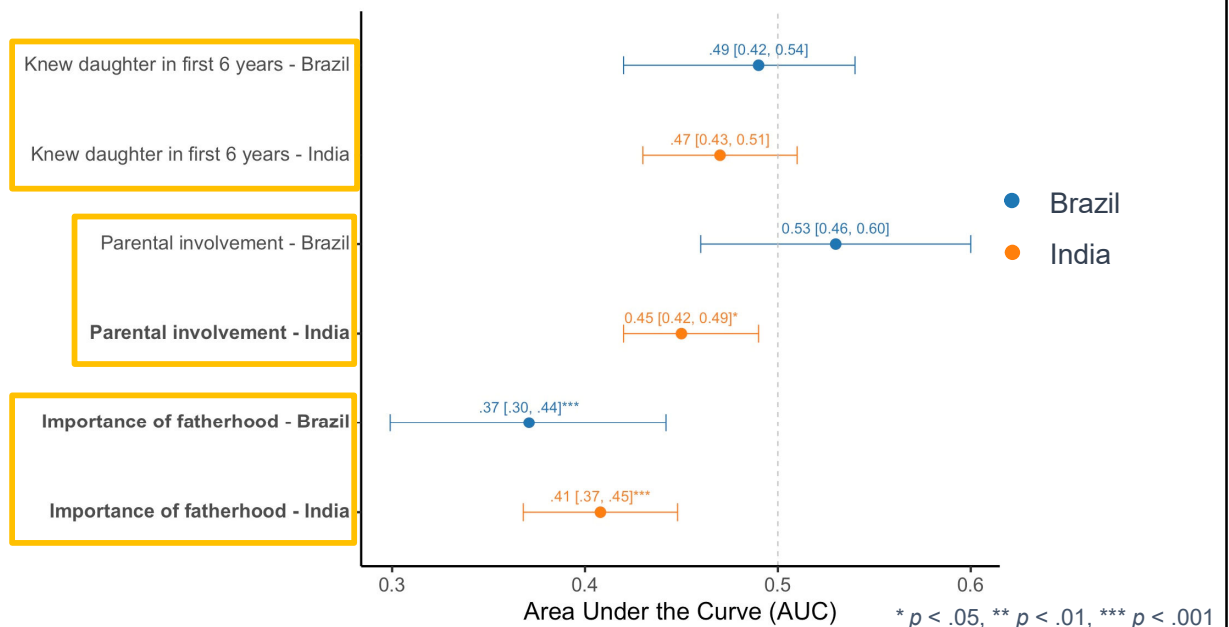
10

## FATHER-DAUGHTER INCEST PROPENSITY

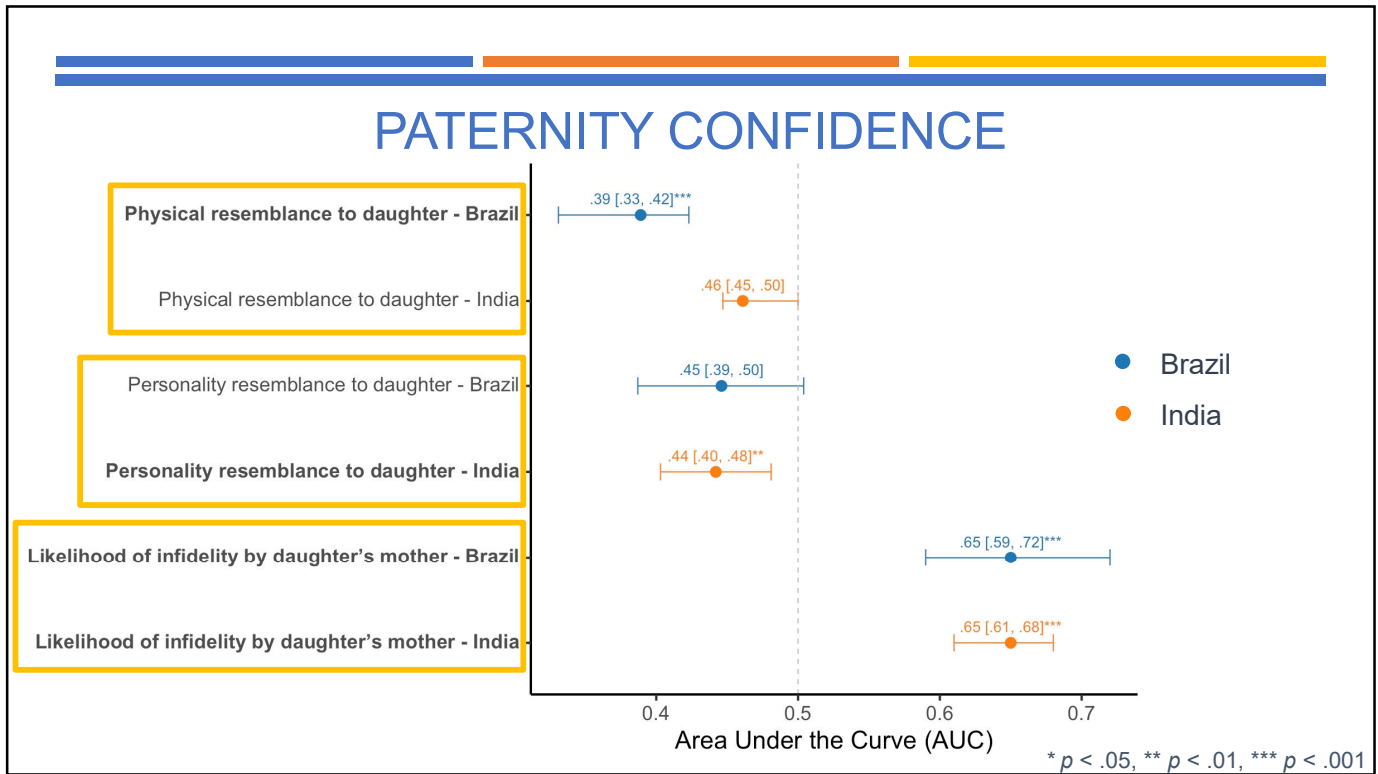


11

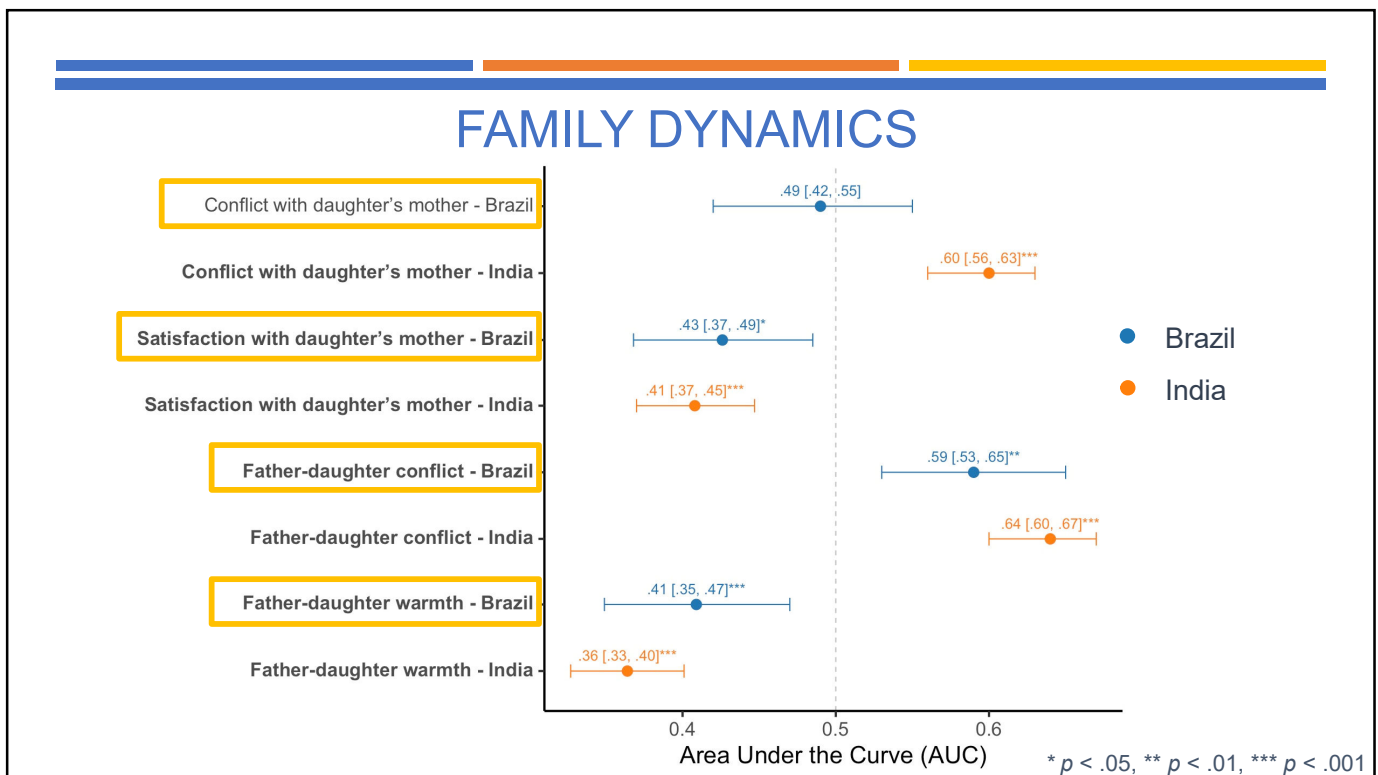
## WESTERMARCK



12



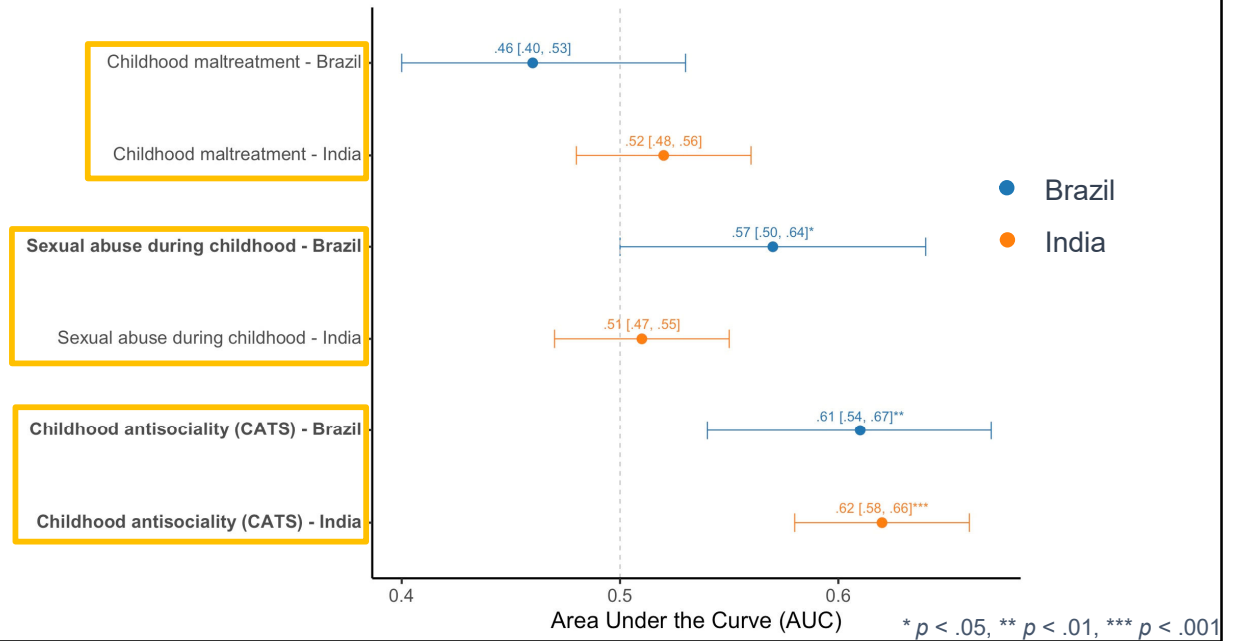
13



14

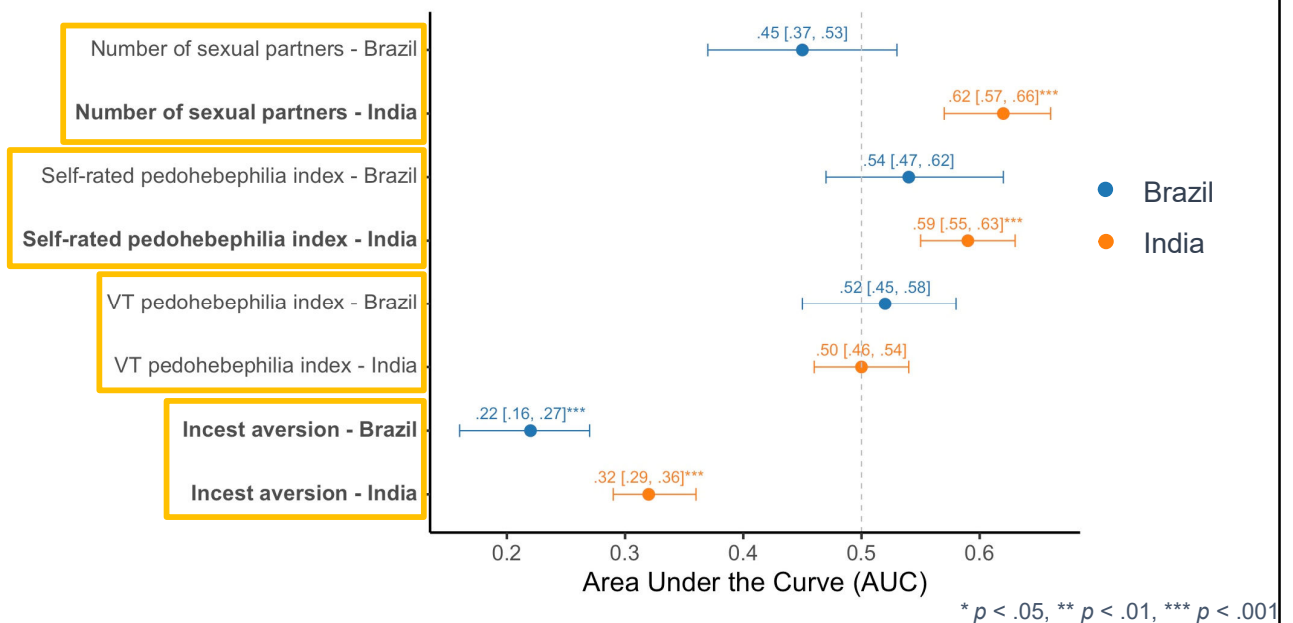


## INDIVIDUAL FACTORS



15

## INDIVIDUAL FACTORS



16



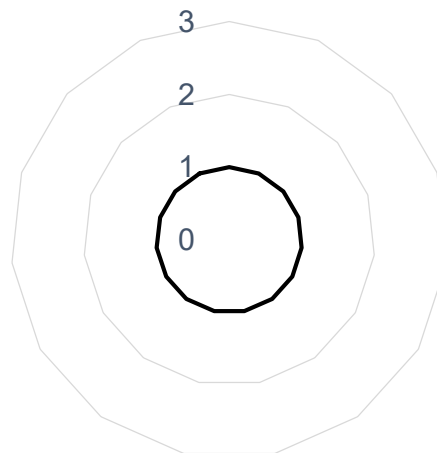
### Multivariate Predictors of Incest Propensity Reported as Adjusted Odds Ratios

aOR > 1.00: higher scores, **more** likely to report incest propensity

RISK FACTOR

aOR < 1.00: higher scores, **less** likely to report incest propensity

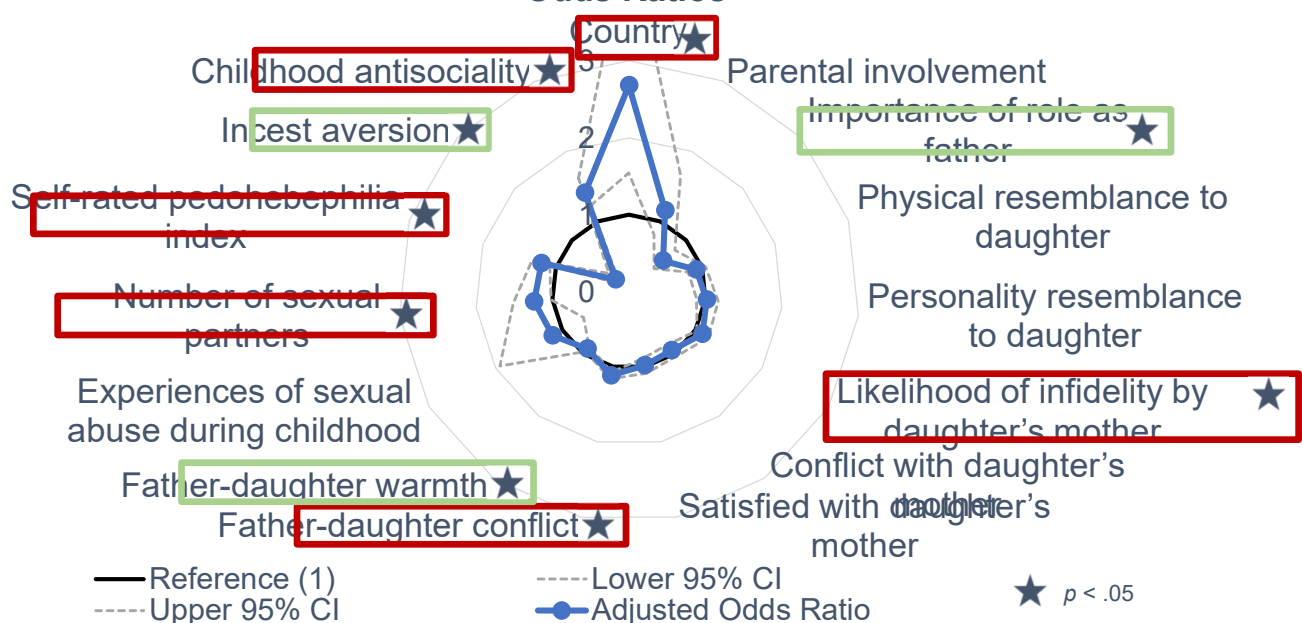
PROTECTIVE FACTOR



—Reference (1)

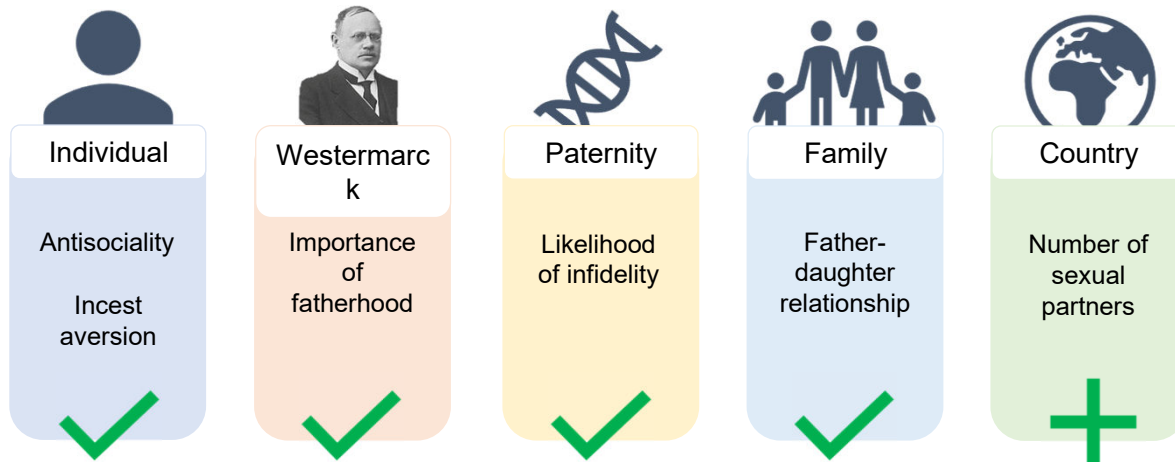
17

### Multivariate Predictors of Incest Propensity Reported as Adjusted Odds Ratios



18

## DISCUSSION



19

## Questions?

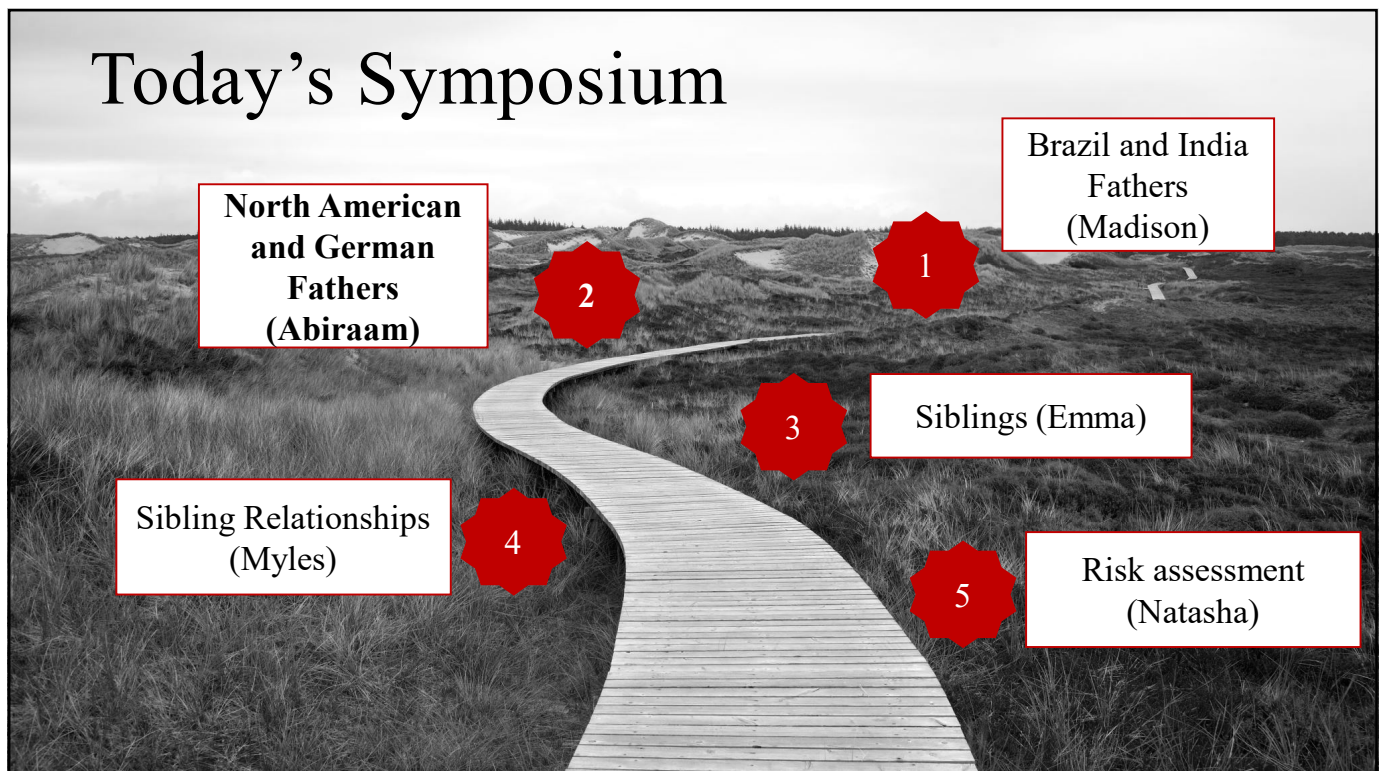
20

## SAMPLE DEMOGRAPHICS

- Mean age:
  - Brazil (43.4,  $sd = 13.6$ ) > India (35.3,  $sd = 8.6$ )
- Education:
  - Brazil < India: 79.3% of participants in India completed college/university or higher compared to 31.4% in Brazil
- Location:
  - Even proportion of urban (50.4%) vs rural (49.6%) participants in India, but in Brazil 81.9% sample lived in urban area
- Children
  - Fathers in Brazil had avg of 2.12 ( $sd = 1.2$ ) children and fathers in India had avg of 2.25 ( $sd = 1.0$ )
  - 90.6% of fathers in Brazil and 91.9% in India had only biological daughters

21

## Today's Symposium



22

# Father-daughter intrafamilial child sexual abuse (ICSA): Exploring risk factors

Abiraam Samithamby ([abiraamsamithamby@cmail.carleton.ca](mailto:abiraamsamithamby@cmail.carleton.ca))

Kelly M. Babchishin, & Michael C. Seto

August 28, 2025

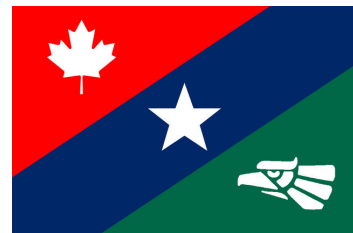
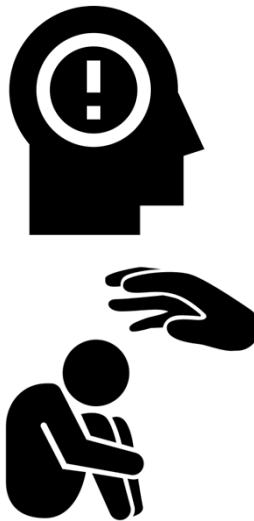
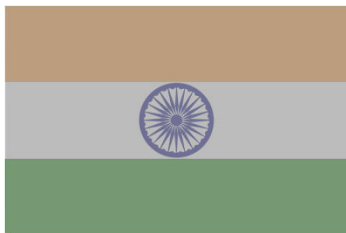


SSHRC  CRSH

Carleton University 

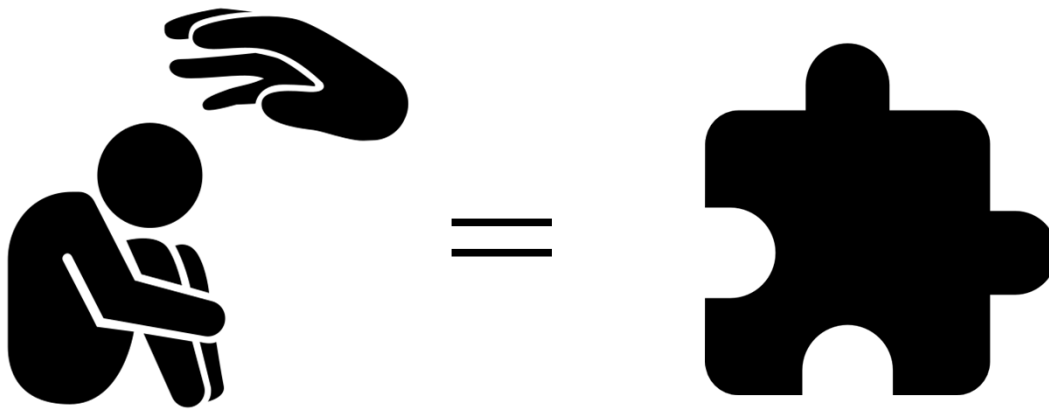
23

## Shifting the focus



24

## Incest is a puzzle



25

## Risk factors for ICSA



Antisocial  
traits



Pedohebephilic  
interests



Westermarck



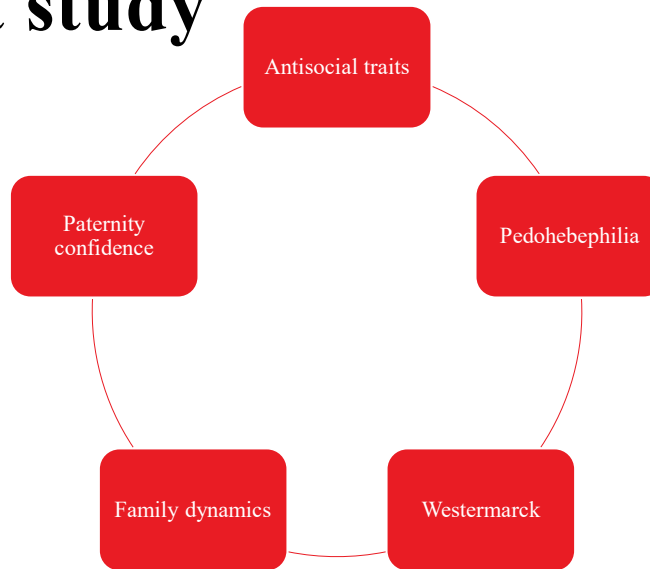
Family  
dynamics



Paternity  
confidence

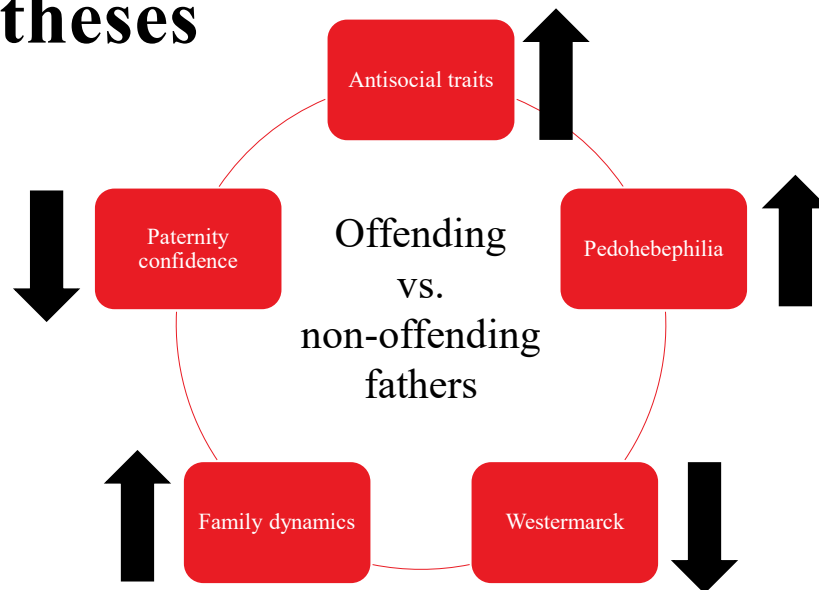
26

## Current study



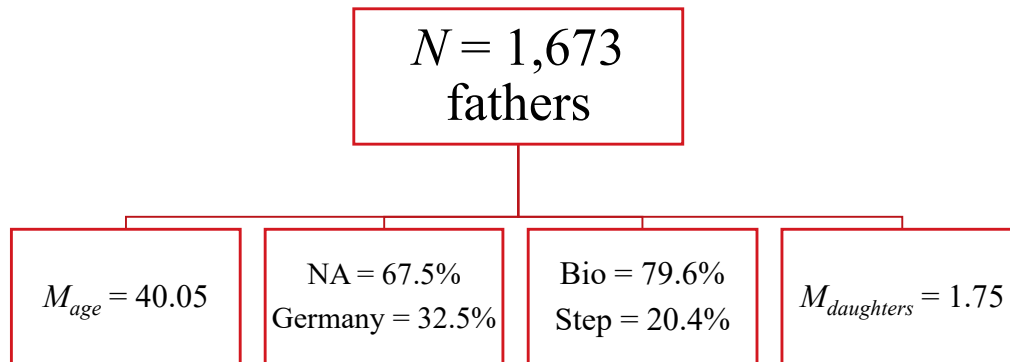
27

## Hypotheses



28

## Method – Participants



29

## Method – Questionnaire

Antisocial traits	<ul style="list-style-type: none"> <li>CATS (12 items)</li> </ul>
Pedohebephilia	<ul style="list-style-type: none"> <li>Rate attractiveness (adults + children)</li> <li>↑ scores = ↑ attraction to children</li> </ul>
Westermarck	<ul style="list-style-type: none"> <li>Present during first 6 years?</li> <li>Parental involvement (8 items)</li> </ul>
Family dynamics	<ul style="list-style-type: none"> <li>Parent-child warmth (5 items); Parent-child conflict (5 items); Partner conflict (5 items); Exposure to violence (8 items); Sexual abuse history (1 item)</li> </ul>
Paternity confidence	<ul style="list-style-type: none"> <li>How much resemble child physically? In personality?</li> <li>Suspicion that mother of child cheated?</li> </ul>
Outcome measures	<ul style="list-style-type: none"> <li>ICSA behaviour</li> <li>ICSA proclivity (arousal and disgust)</li> </ul>

30



## Method – Story vignette

- “Andrew is driving **his young daughter** Nicole home from a ballet recital. It’s late in the evening and they have been driving for a good while when the car suddenly breaks down. Andrew decides they should spend the night in a hotel. The hotel is fully booked and there is only one room left with a double bed. They take the room and go to sleep. Andrew wakes up in the middle of the night because Nicole is embracing him and **fondling his genitals** with one hand. Andrew responds by **kissing her**. They move closer together under the covers and **begin to have intercourse.**”

How **arousing** do you find the story? (0 to 10)

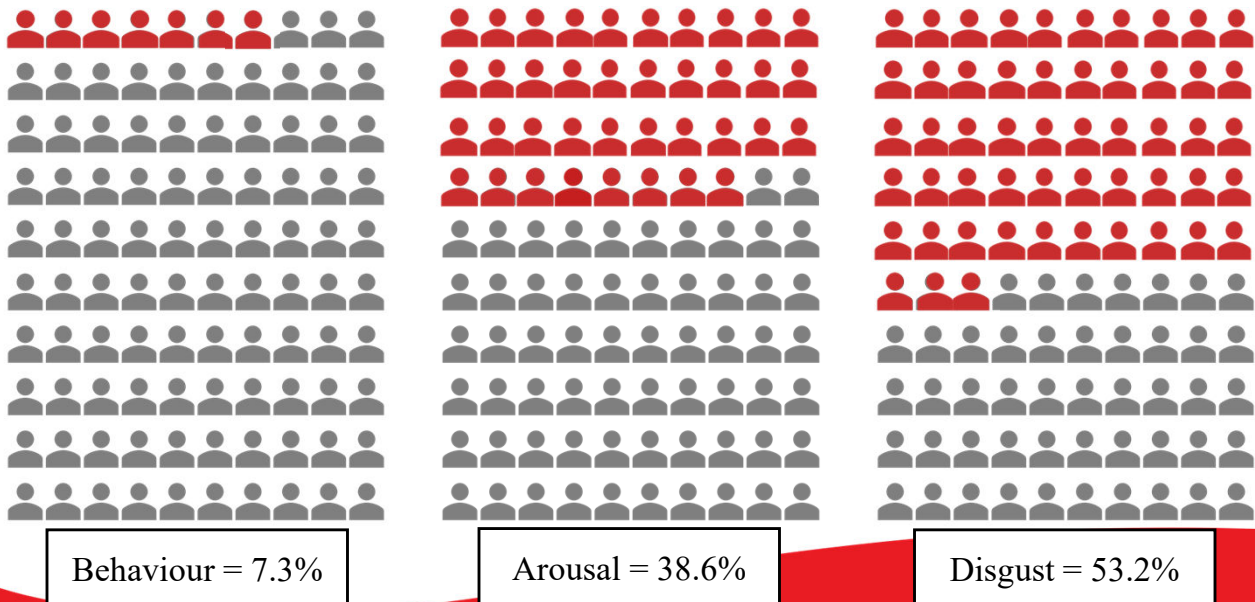
- 0: No proclivity
- 1-10: Some proclivity

How **disgusting** do you find the story? (0 to 10)

- 10: No proclivity
- 0-9: Some proclivity

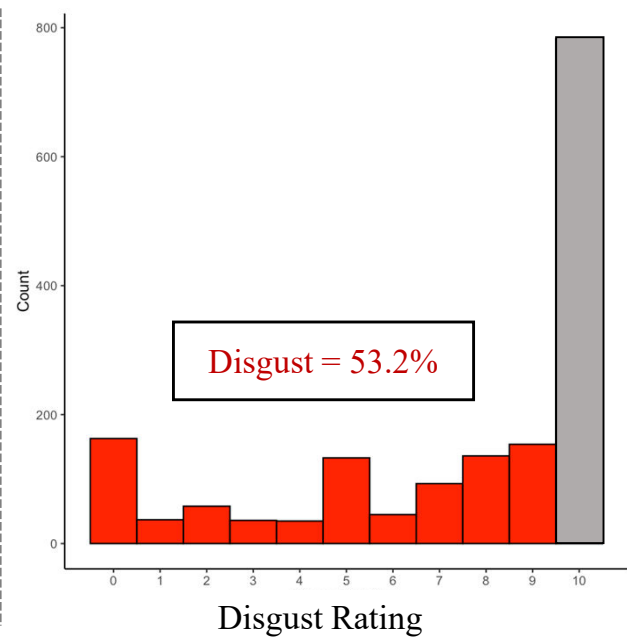
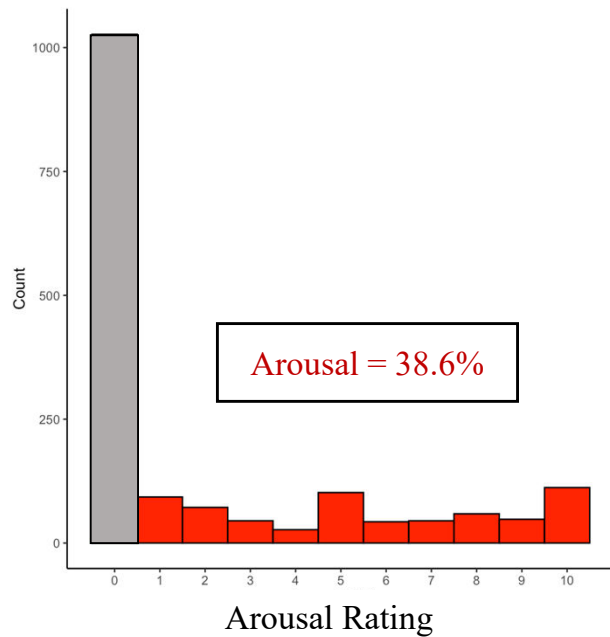
31

## Results – Outcome measures



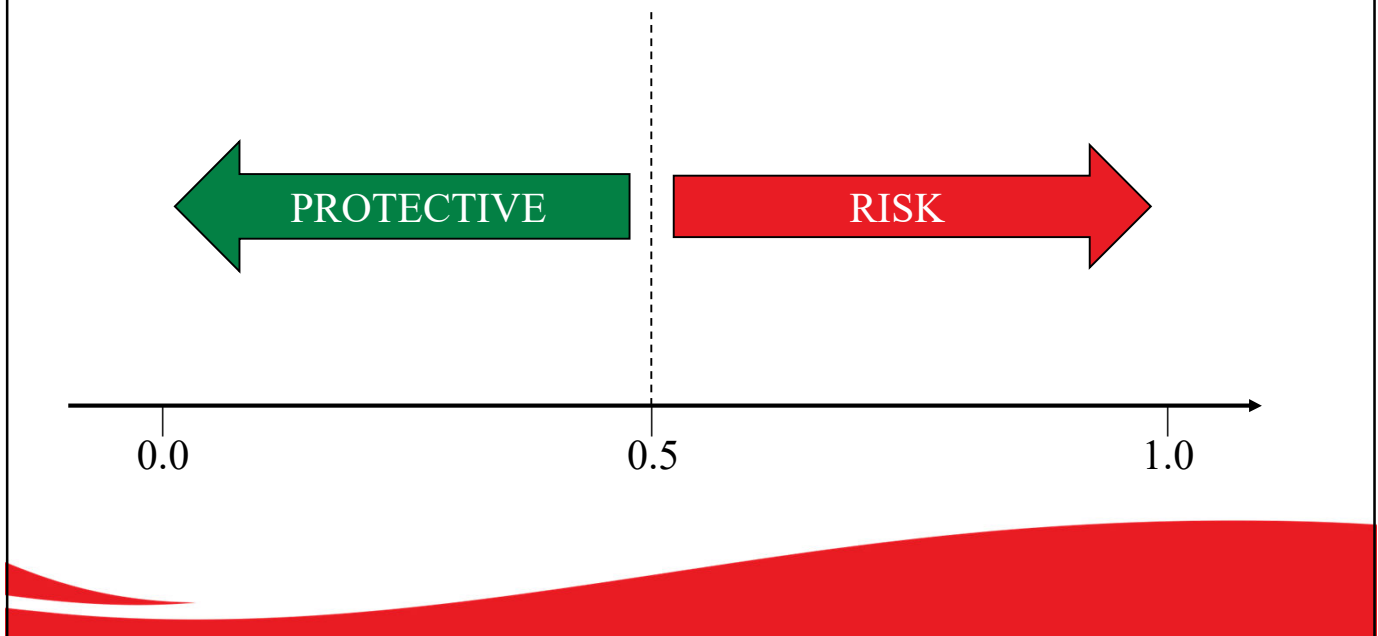
32

## A note on proclivity measures



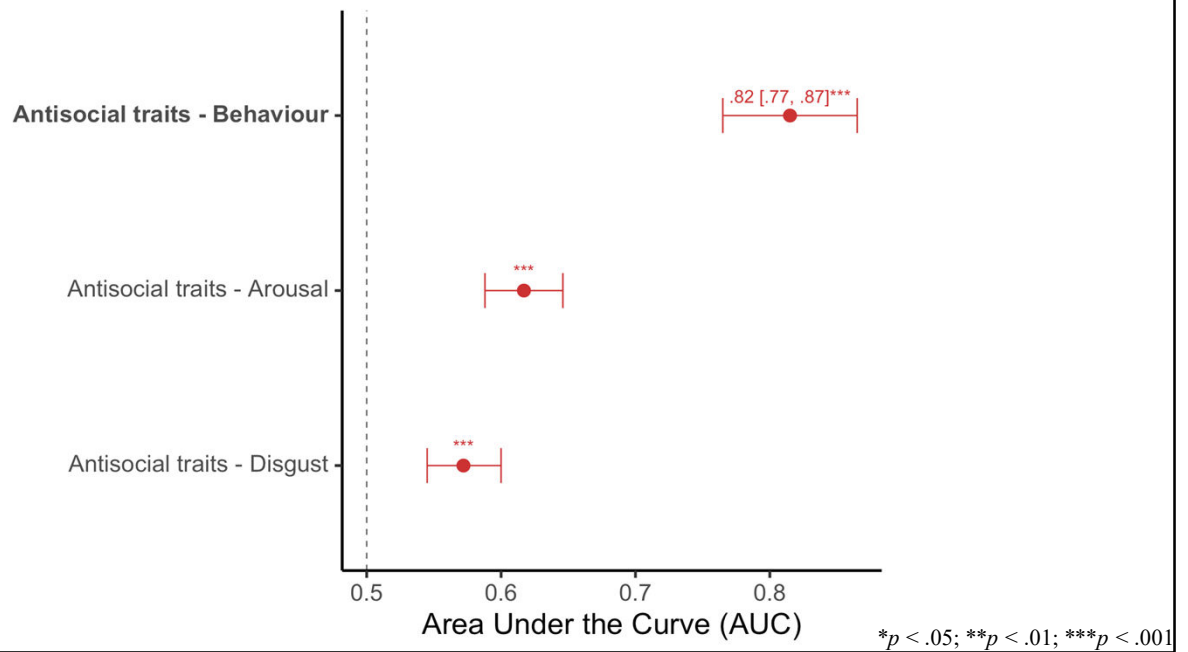
33

## Results – Area Under the Curve (AUC)



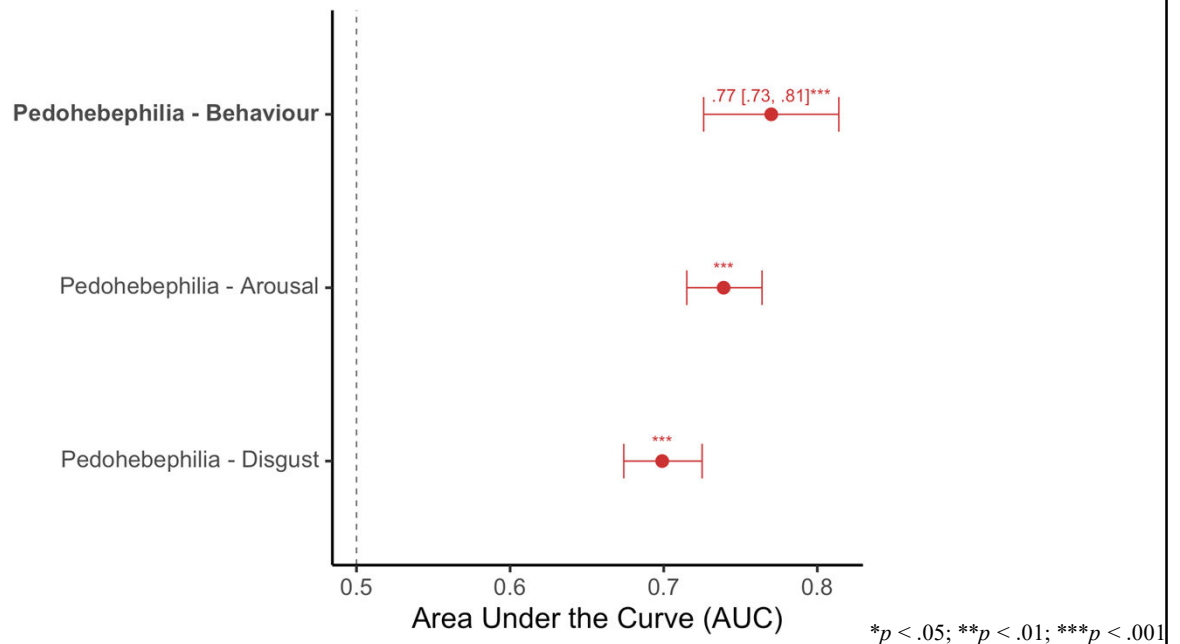
34

## Results – Antisocial traits



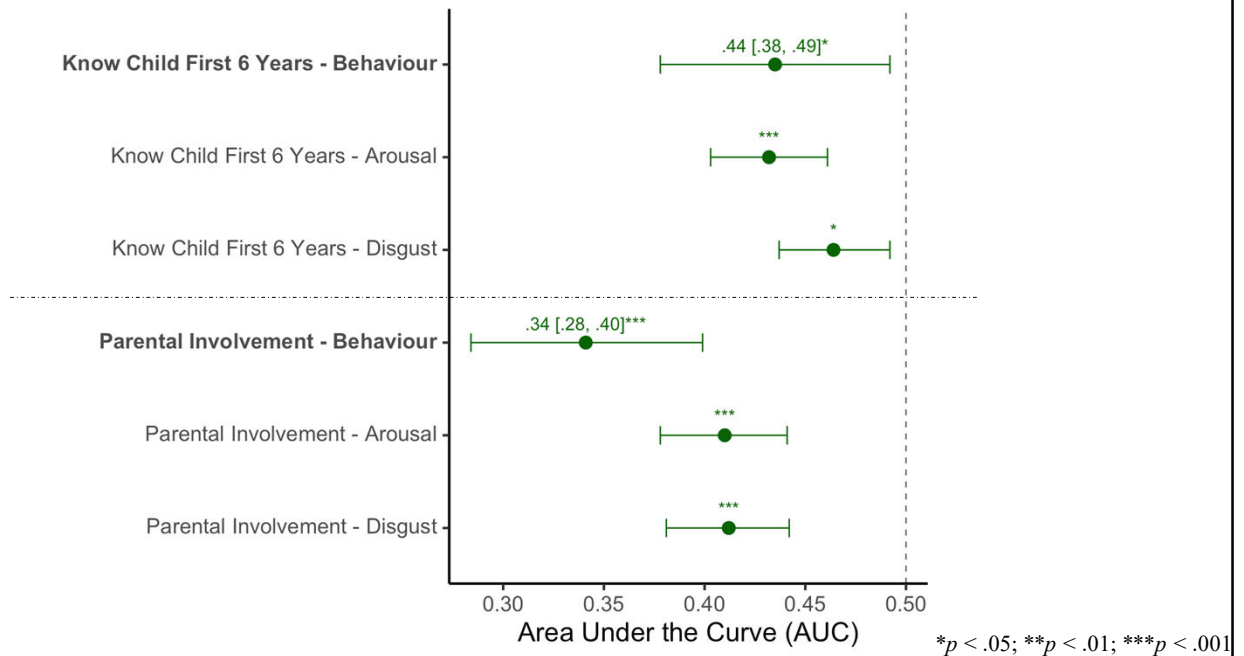
35

## Results – Pedohebephilia



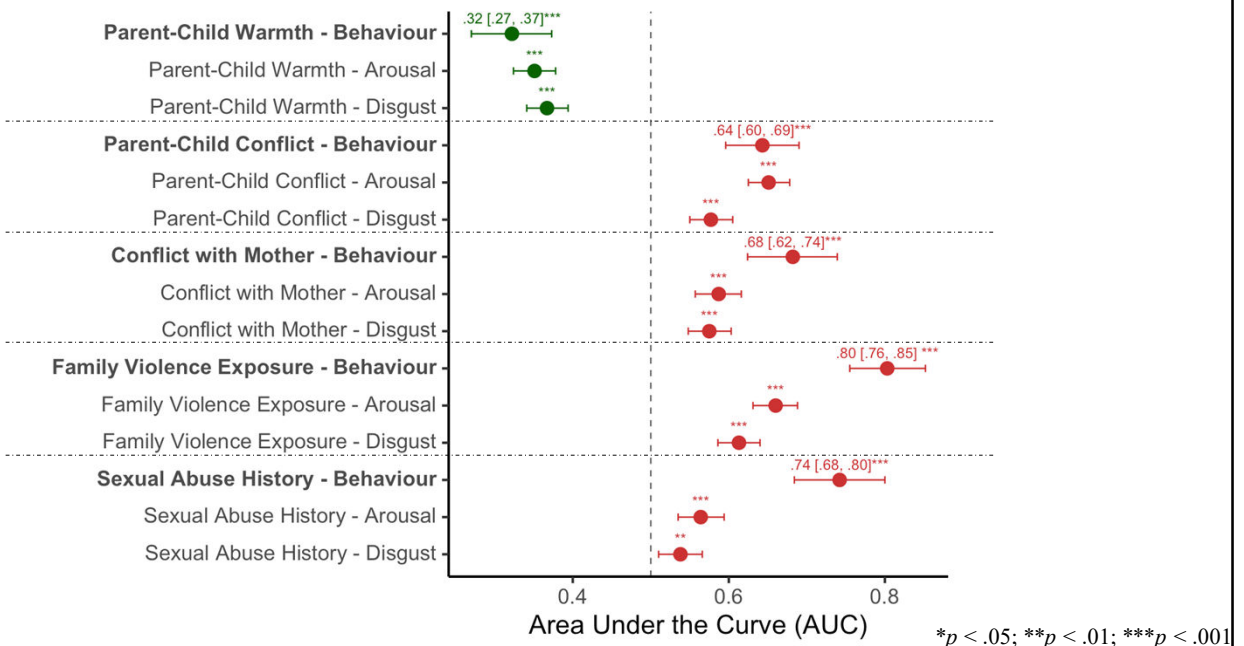
36

## Results – Westermarck



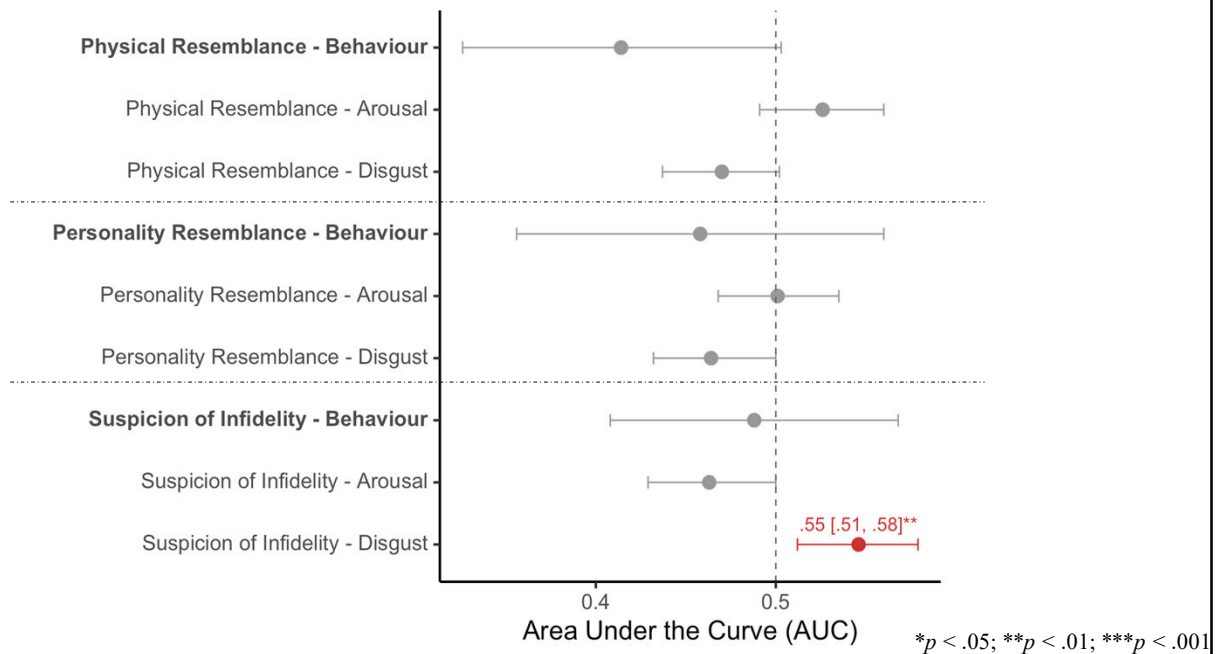
37

## Results – Family dynamics



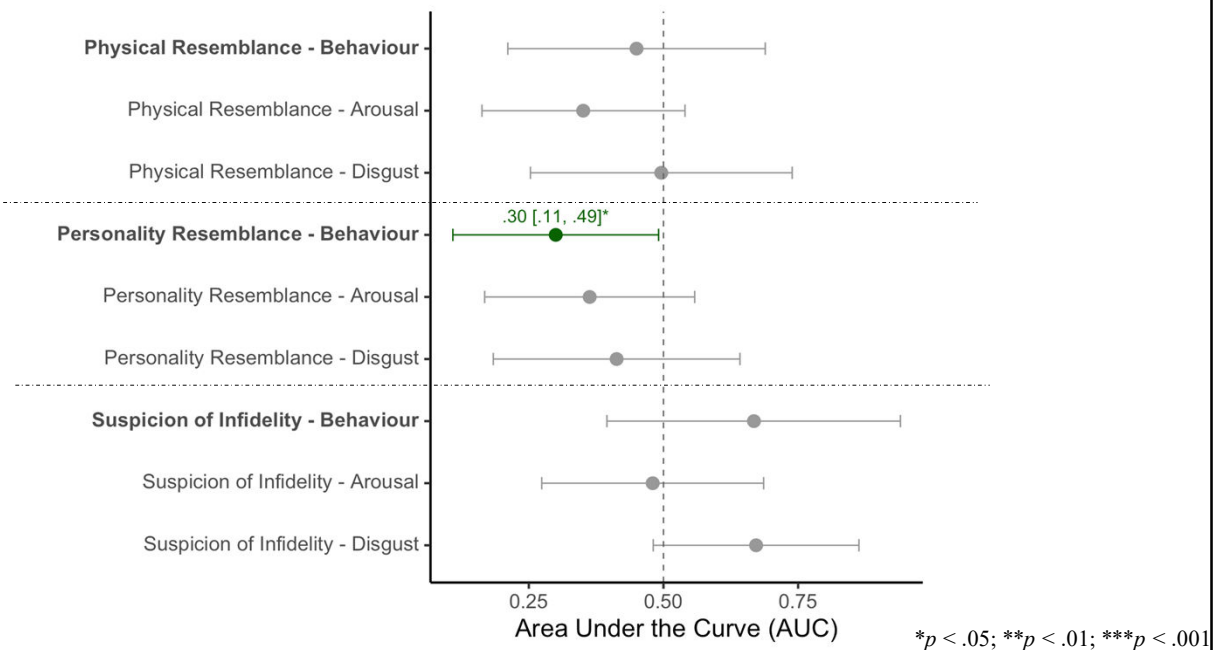
38

## Results – Paternity confidence (bio only)



39

## Results – Paternity confidence (step only)



40

# Discussion

Current study:



Antisocial  
traits



Pedohebephilic  
interests



Westermarck



Family  
dynamics



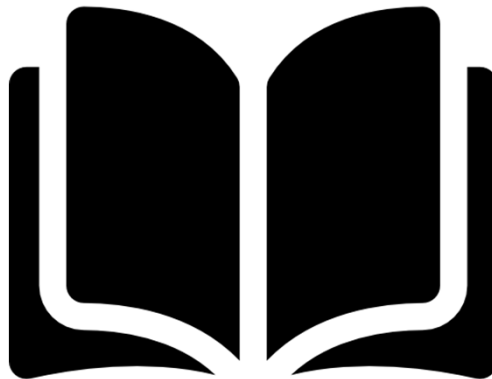
Paternity  
confidence

Madison's Study:



41

## The use of vignettes



42

# Conclusion



43

## Thank You!

Email: [abiraamsamithamby@email.carleton.ca](mailto:abiraamsamithamby@email.carleton.ca)

**Carleton**  
University

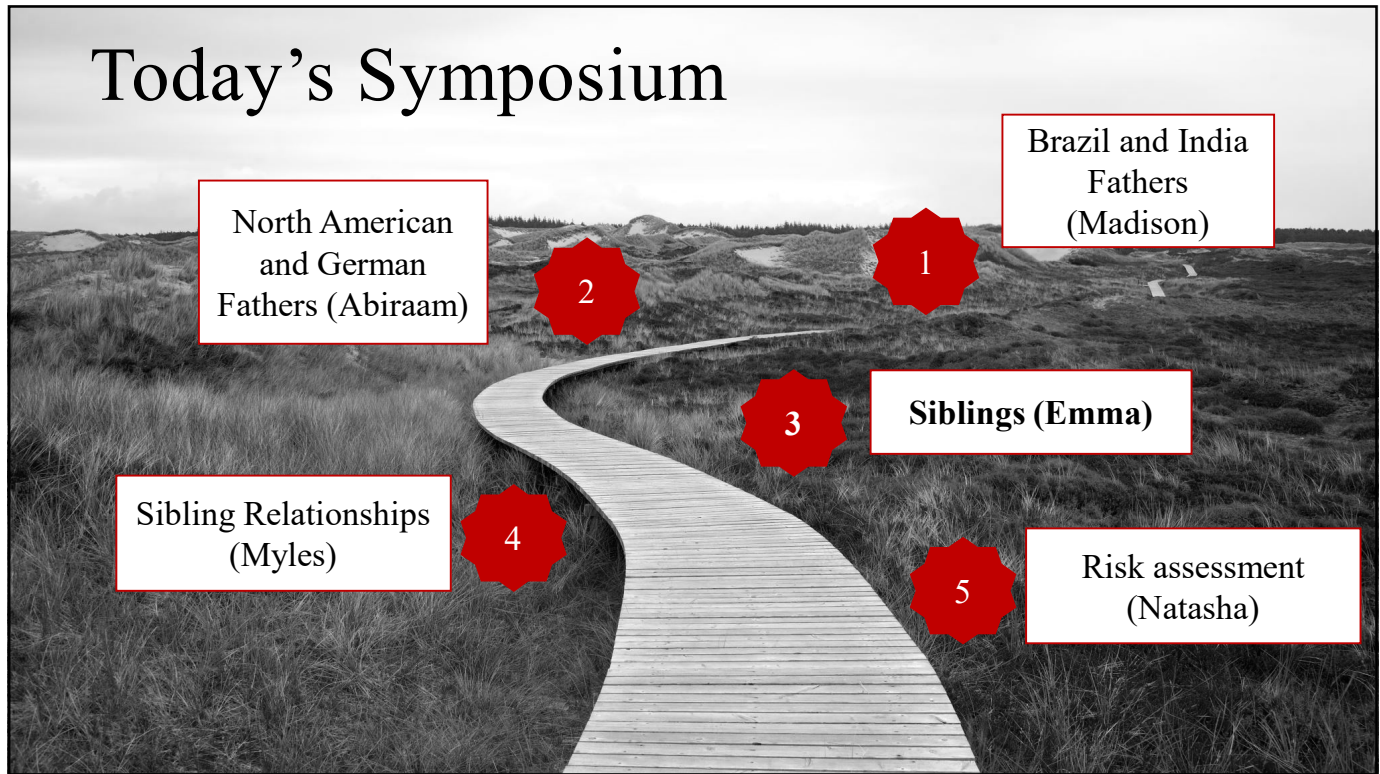


SEXUALLY  
HARMFUL  
BEHAVIOURS  
*Responsible. Loud.*

44



# Today's Symposium



45

## The impact of individual and evolutionary factors on the propensity for sibling sexual abuse

Emma J. Holmes ([emmajholmes@cmail.carleton.ca](mailto:emmajholmes@cmail.carleton.ca))

Kelly M. Babchishin & Yan Liu

August 28<sup>th</sup>, 2025



SSHRC  CRSH

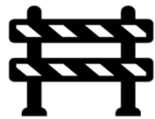


46

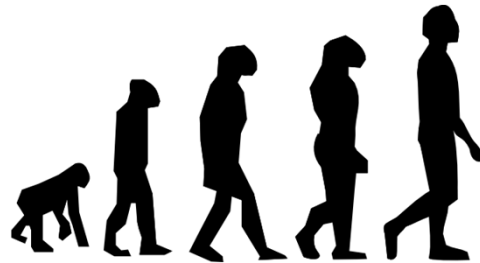
# Theories of sibling sexual abuse



Motivation  
factors



Facilitation  
factors



Evolutionary theory of incest  
aversion

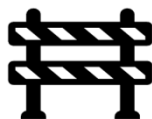
47

## Current study

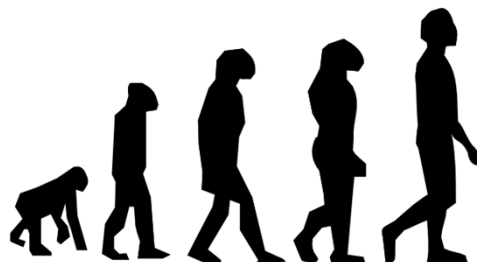
Which combination of factors best explain propensity for sibling sexual abuse?



Motivation  
factors



Facilitation  
factors



Evolutionary theory of incest  
aversion

48

## Method – Participants

Wave 1:  $N = 684$



Wave 2

$N = 225$



$N = 255$



$N = 1,164$

- ✓ 18 – 30 years old
- ✓  $\geq 1$  biological sibling(s) within 5 years of participant
- ✓ Live in Canada or the USA
- ✗ Twins
- 46.6% identified as women
- 49.1% identified as straight

49

## Method – Measures

Reactions to 3 fictional vignettes depicting sibling sexual abuse

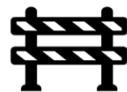
- Likelihood of reciprocation
- Moral opposition
- Disgust



Propensity



Motivation  
factors



Facilitation  
factors

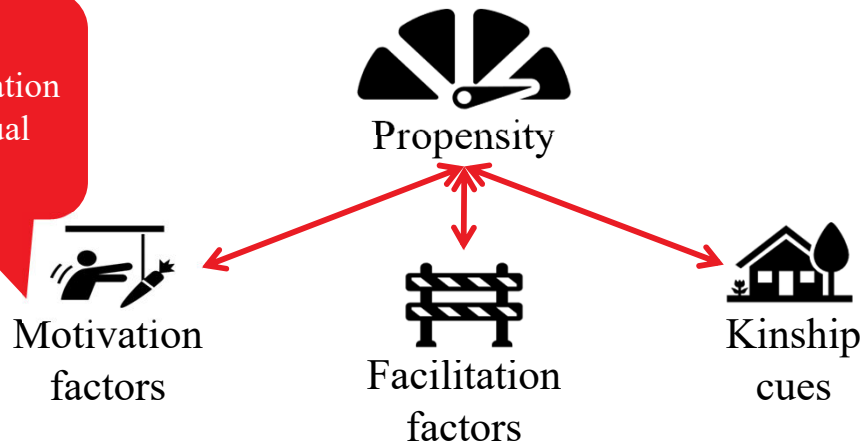


Kinship  
cues

50

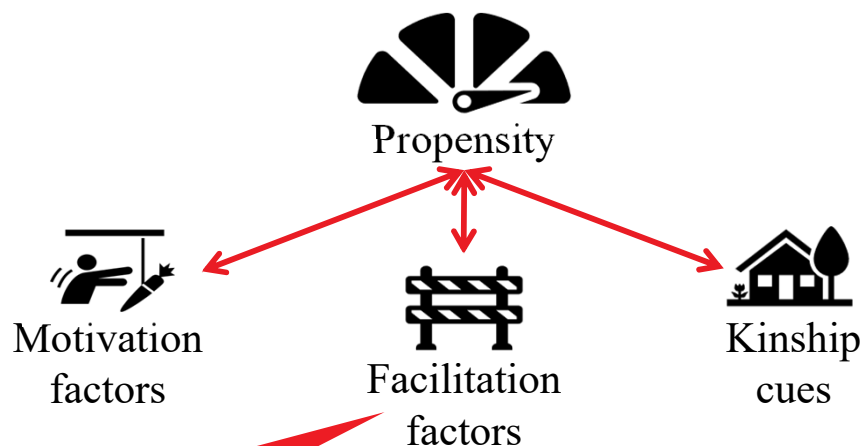
## Method – Measures

- Pedophilia
- Sexual regulation
- Atypical sexual behaviours



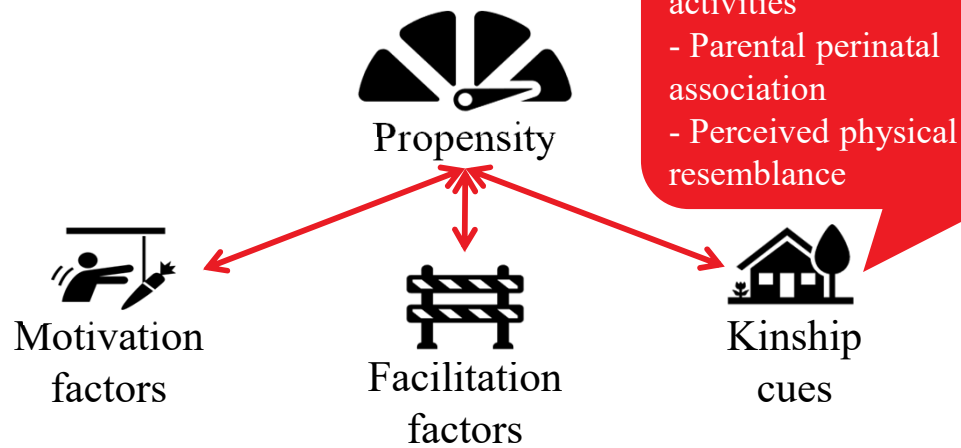
51

## Method – Measures



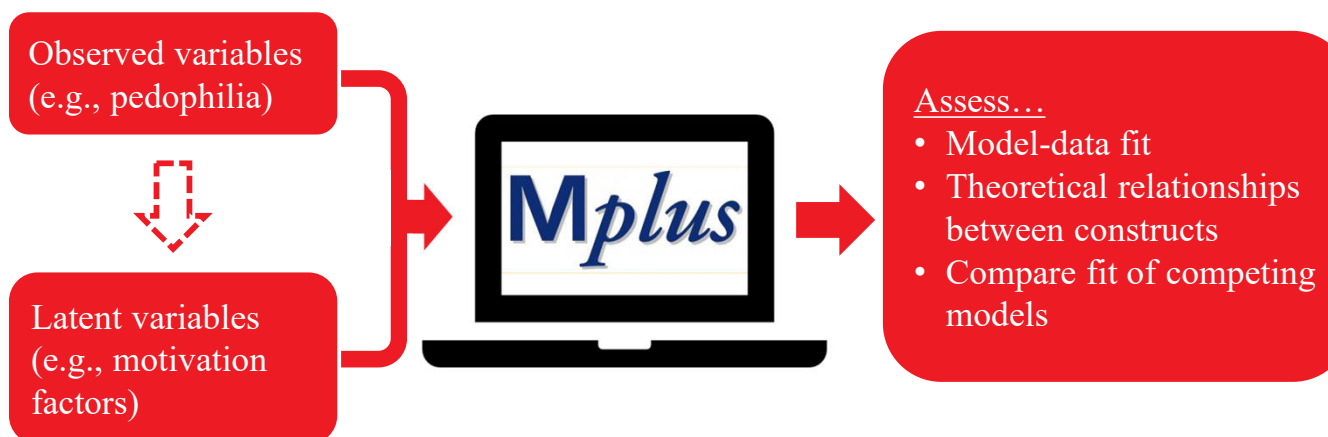
52

## Method – Measures



53

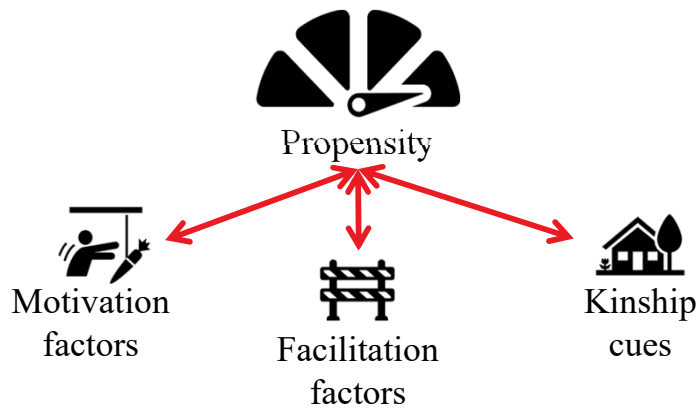
## Method – Analyses



54

# Results

Motivation-Facilitation-Kinship model



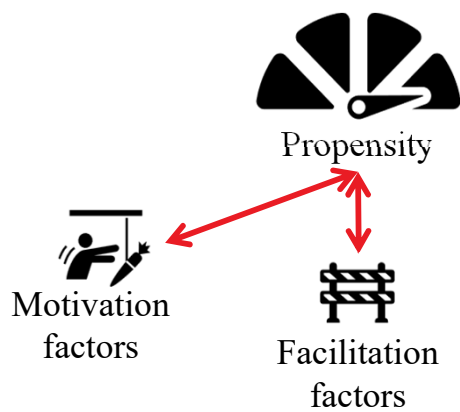
Model fit:

- M-F-K: baseline model

55

# Results

Motivation-Facilitation model



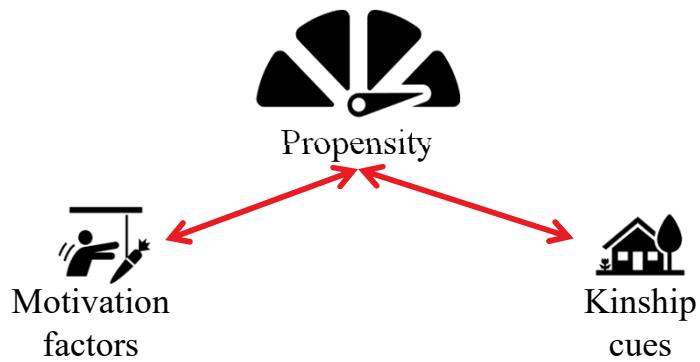
Model fit:

- M-F-K: baseline model
- M-F: significantly worse fit

56


# Results

Motivation-Kinship model



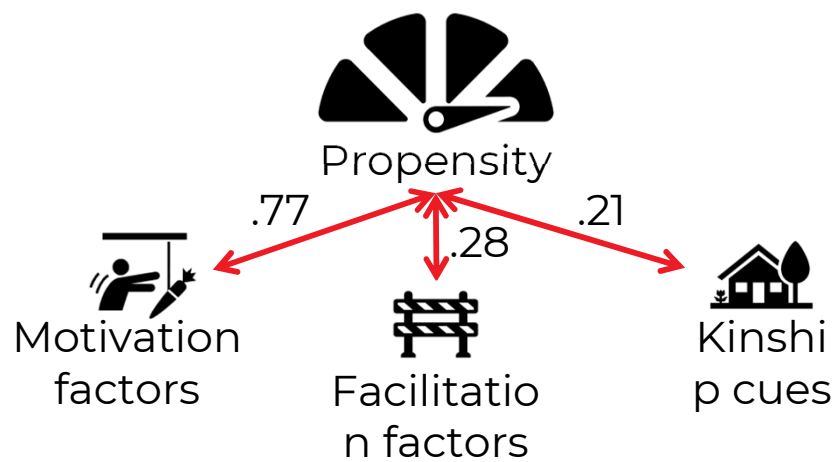
Model fit:

- M-F-K: baseline model
- M-F: significantly worse fit
- M-K: significantly worse fit

 The Motivation-Facilitation-Kinship model fit the data the best.

57

# Results



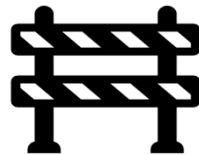
58



# Conclusion



Motivation  
factors



Facilitatio  
n factors

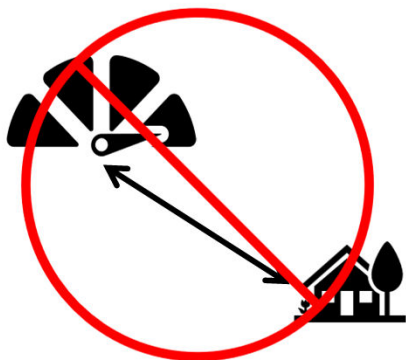


Kinshi  
p cues



59

# Conclusion



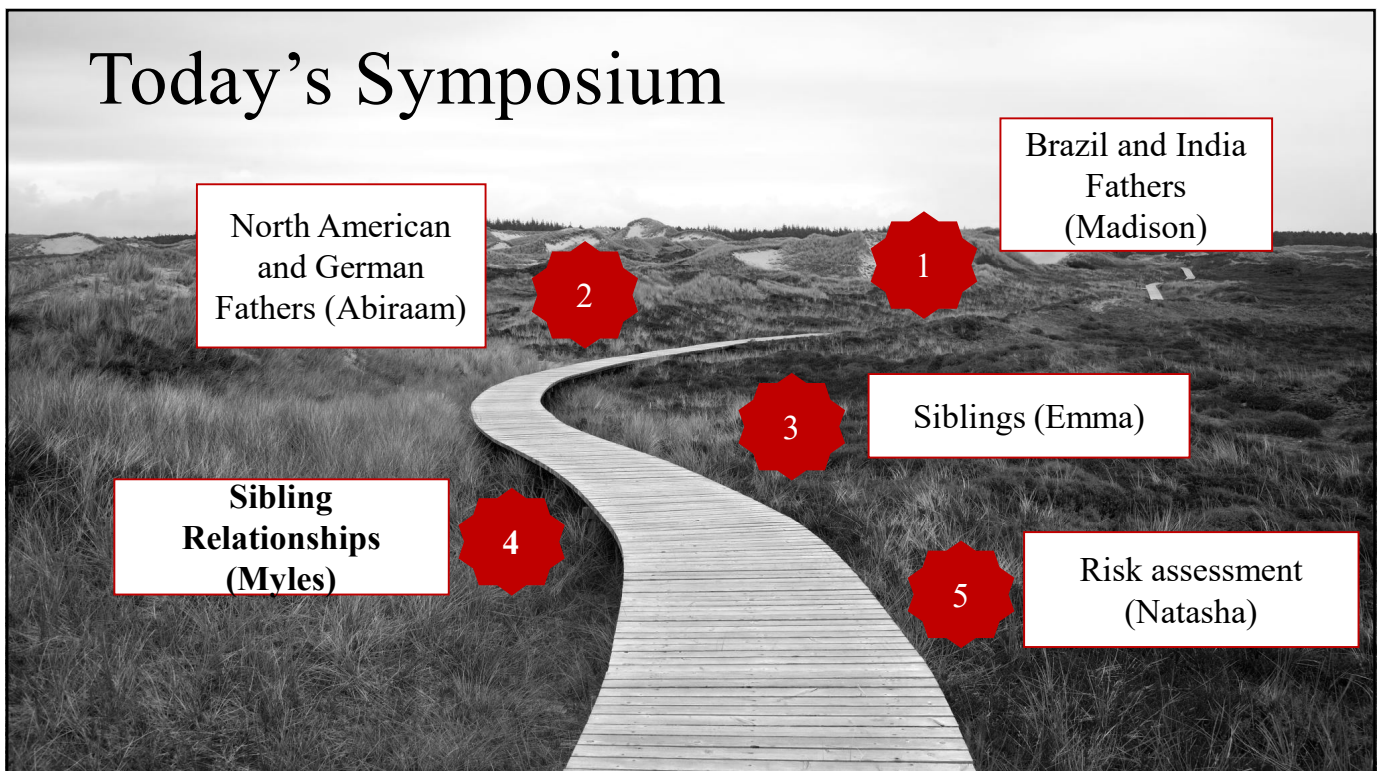
Alternative explanations

- Specificity of evolved mechanisms
- Kinship cues = proximity = opportunity

60



61



62

# Assessing the Link between Sibling Relationship Quality and Propensity for Sibling Sexual Abuse (SSA)

Myles Davidson ([mylesdavidson@cmail.carleton.ca](mailto:mylesdavidson@cmail.carleton.ca))

Emma J. Holmes, & Kelly M. Babchishin

August 28, 2025



SSHRC  CRSH



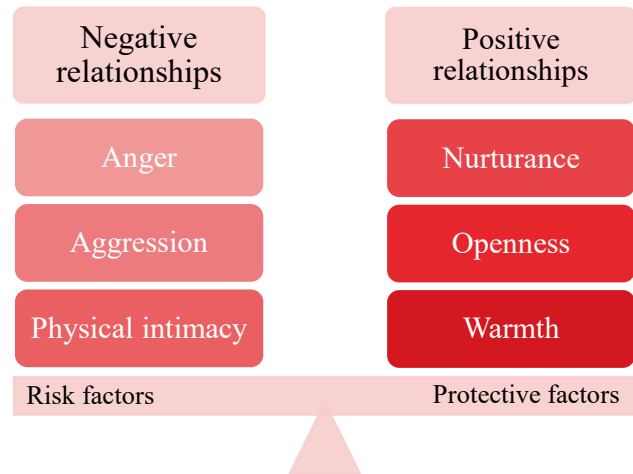
63

## Why study sibling relationship quality?



64

Sibling relationship quality can be a protective or risk factor for SSA



65



Research Question

Is sibling relationship quality related to propensity for SSA?

66

## Method – Participants

Wave 1:  $N = 684$



Wave 2:

$N = 225$



$N = 255$



$N = 1,164$

- ✓ 18 – 30 years old
- ✓  $\geq 1$  biological sibling(s) within 5 years of participant
- ✓ Live in Canada or the USA
- 46.6% identified as women
- 49.1% identified as straight

67

## Method – Measures



### Modified Sibling Attachment Inventory (SAI)

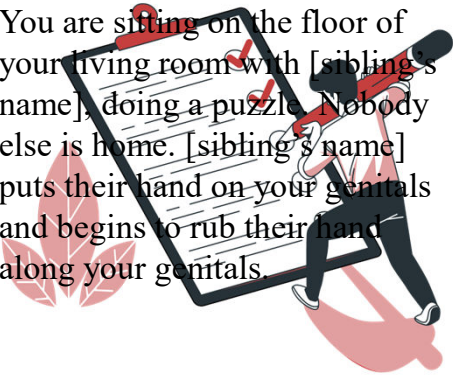
Noel et al., 2018

- Predictor variable
- 10 items
- **Items personalized** using participants' sibling's name
- Items rated from **participant's** and their **sibling's** perspective (e.g., "I accept [sibling] as they are" vs. "[Sibling] accepts me as I am")
- Two additional items added

68

# Method – Measures

You are sitting on the floor of your living room with [sibling's name], doing a puzzle. Nobody else is home. [sibling's name] puts their hand on your genitals and begins to rub their hand along your genitals.



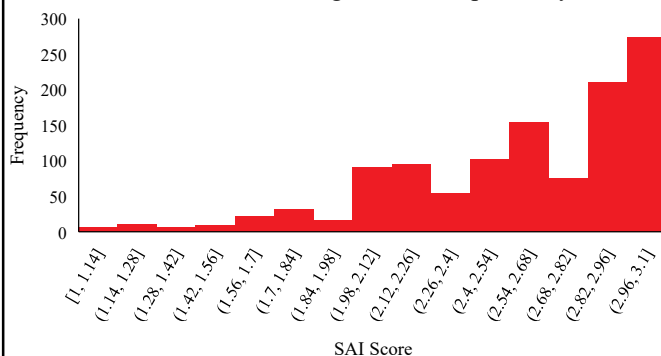
## Propensity for SSA

- Outcome variable
- Measured using reactions to author-generated vignette
  - Disgust
  - Arousal
  - Moral wrongness
  - Likelihood of encouraging sibling reciprocation
- Composite propensity computed and grouped into quartiles

69

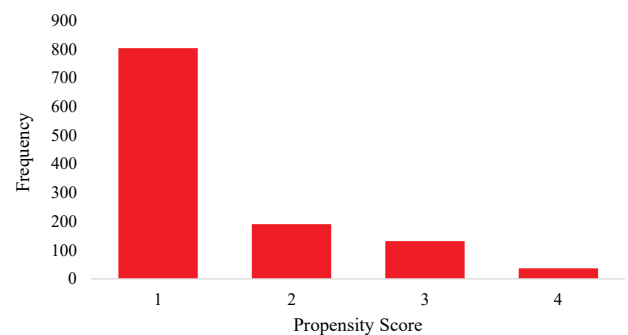
# Results

Distribution of Sibling Relationship Quality



$$M_{SAI} = 2.57 (SD = 0.43)$$

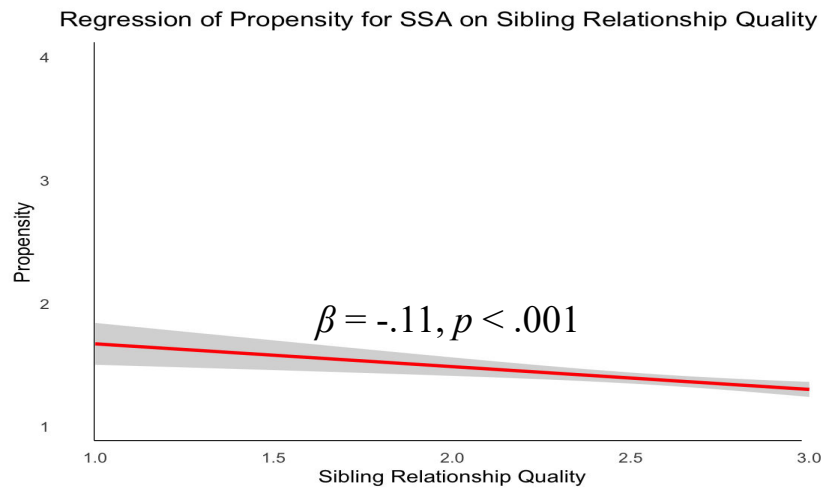
Distribution of Propensity for SSA



$$M_{Propensity} = 1.49 (SD = 0.82)$$

70

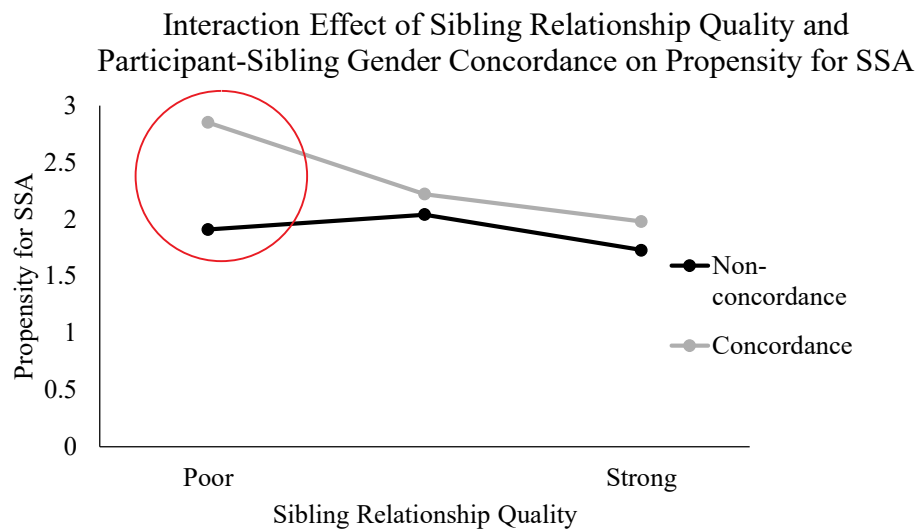
# Results



Model explained 1% of the variance ( $R^2 = .01$ ).

71

# Results

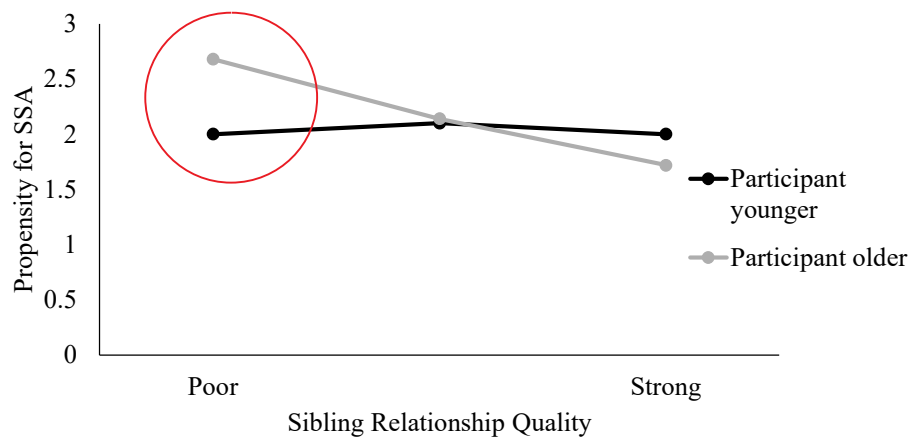


72



# Results

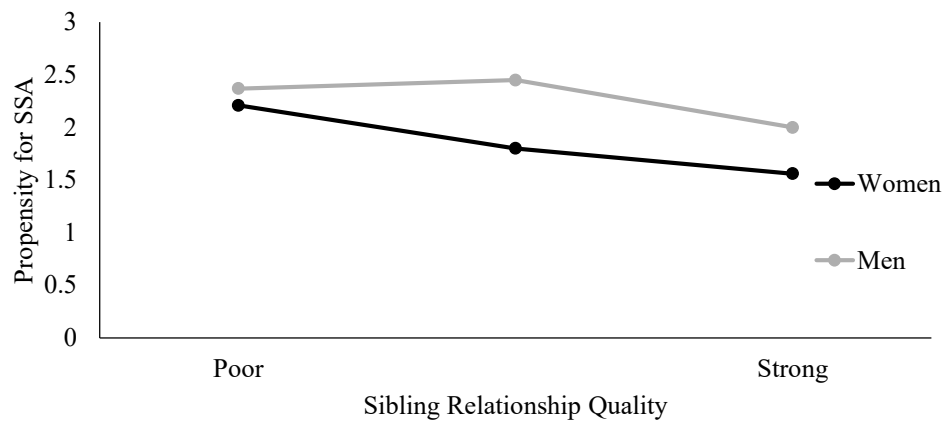
Interaction Effect of Sibling Relationship Quality and Sibling Age Order on Propensity for SSA



73

# Results

Interaction Effect of Sibling Relationship Quality and Participant Gender on Propensity for SSA



74

## Discussion

Sibling relationship quality is potentially protective against SSA, especially in certain contexts



75

**Thank you!**

**Carleton**  
University

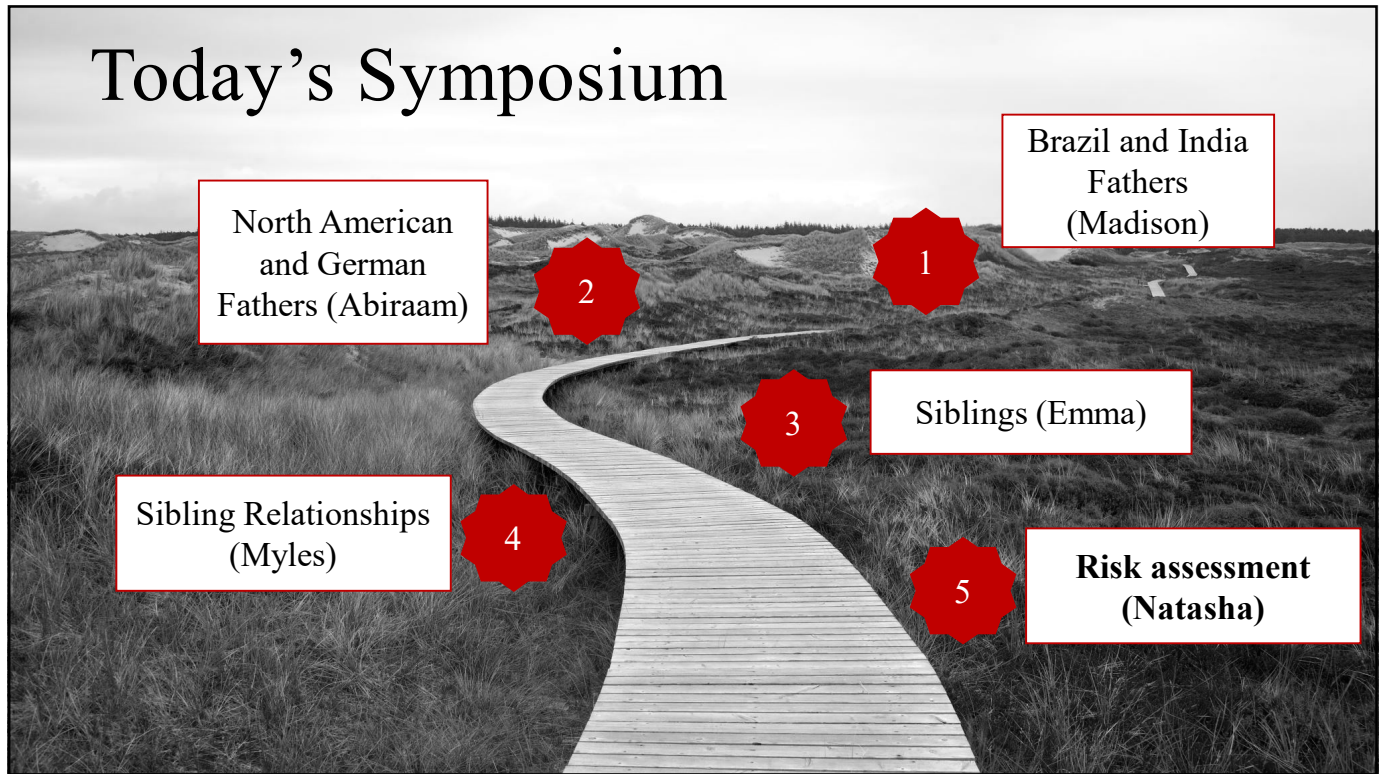


SEXUALLY  
HARMFUL  
BEHAVIOURS  
*Research Unit*

[mylesdavidson@email.carleton.ca](mailto:mylesdavidson@email.carleton.ca)

76

# Today's Symposium



77

## Risk Assessment for Men with Incest Sexual Offences: Predictive Accuracy of the Static-99R



Natasha Fracassi  
& Maaïke Helmus

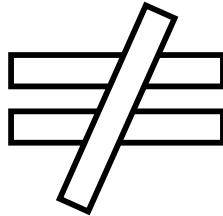
IATSO 2025  
Poznań, Poland

Thursday, August 28<sup>th</sup>, 2025

78

# Introduction

Incest Child  
Sexual Abuse  
(CSA)



Extrafamilial  
Child Sexual  
Abuse  
(CSA)



79

# Introduction

## ICD-11

- Child over 5 years = 5-14 years

## DSM-5

- Prepubescent child ≈ <13 years

## Research

- Varies per study, per jurisdiction → <18 years

## Incest

- child age may be extended due to the unique dynamics of familial abuse

80

## Static-99R



[www.saarna.org](http://www.saarna.org)

Item #	Risk Factor	Possible Score
1	Age at release from index sex offence	-3, -1, 0, 1
2	Ever lived with a lover	0, 1
3	Index non-sexual violence - Any Convictions	0, 1
4	Prior non-sexual violence - Any Convictions	0, 1
5	Prior Sex Offences	0, 1, 2, 3
6	Four or more prior sentencing dates	0, 1
7	Any convictions for non-contact sex offences	0, 1
8	Any Unrelated Victims	0, 1
9	Any Stranger Victims	0, 1
10	Any Male Victims	0, 1
	<b>Total Score (Sum)</b>	From -3 to 12



© 2022 American Psychological Association  
ISSN: 1076-8971

Psychology, Public Policy, and Law

2022, Vol. 28, No. 3, 307-331  
<https://doi.org/10.1037/law0000331>

Static-99R: Strengths, Limitations, Predictive Accuracy Meta-Analysis, and  
Legal Admissibility Review

L. Maaïke Helmus<sup>1</sup>, Sharon M. Kelley<sup>2</sup>, Annabelle Frazier<sup>3</sup>, Yolanda M. Fernandez<sup>4</sup>, Seung C. Lee<sup>4</sup>,  
Martin Rettenberger<sup>5</sup>, and Marcus T. Boccaccini<sup>6</sup>

81

## Purpose of Current Study

**Given the discrepancy in Static-99R total score and risk factors between incest and extrafamilial CSA, would the predictive accuracy of Static-99R vary between these two groups?**

**Does the way we define “child” have substantial impact on recidivism research?**

82

# Hypotheses

The predictive accuracy of Static-99R will vary between incest and extrafamilial CSA



The age cutoff used to define child will have substantial impact on recidivism research



83

## Method: Multiple Datasets

In order for a dataset to be used in this study:



84

18 Datasets	Dataset Name	Dataset #	Sample Size	Total 3,585
	DSP	1	308	
	Knight & Thorton 1	4.1	124	
	Knight & Thorton 2	4.2	87	
	Proulx	6	89	
	Boer	7	164	
	Hang	8	71	
	Langstrom	11	580	
	Reinhardt	12	85	
	Bartosh	15	53	
	Bonta/Yessine	17	31	
	Wilson	18	40	
	Grace	19	298	
	Johansen	25	227	
	Lehmann	29	376	
	Nicholaichuk	32	48	
	Romine Swinburne	33	331	
	Proulx (Pinel)	34	117	
	BC-RAPSA-D	35	556	

85

Datasets		
<i>Child Age</i>	<i>Jurisdiction</i>	<i>Recidivism</i>
<ul style="list-style-type: none"> <li>• 3 → 0-13, 0-17 (if incest)</li> <li>• 5 → 0-15</li> <li>• 5 → 0-13</li> <li>• 5 → unknown/undefined</li> </ul>	<ul style="list-style-type: none"> <li>• 9 Canadian</li> <li>• 5 American</li> <li>• 3 European</li> <li>• 1 New Zealand</li> </ul>	<ul style="list-style-type: none"> <li>• 10 charges</li> <li>• 8 convictions</li> </ul>

86

## CSA Type

### Incest CSA

Individuals who commit sexual offenses exclusively against children within their own family, such as their biological children, stepchildren, or other close relatives

### Extrafamilial CSA

Individuals who committed a sexual offence outside of their family circle

CSA Type	N (%)
Extrafamilial CSA	1,997 (55.7%)
Incest CSA	1,588 (44.3%)
Total	3,585 (100%)

87

## Static-99R Total Score

### Averages Static-99R Total Score

2 CSA Type	Mean (SD)
Extrafamilial	3.27 (2.46)
Incest	0.73 (1.94)
	2.15 (2.57)

**Min.****Max**

-3, 11

### Cohen's D

1.129

**Very Large Effect Size**

### 95% Confidence Interval

2.390, 2.678

**Statistically Significant**

88



## Sexual Recidivism at Fixed 5-year Follow Up

### Defined In Primary Data

Reoffending with a new sexual offense and/or crimes with a sexual motivation, whether or not the offence was explicitly sexual

### Chi-Square

2 CSA Type	No Recidivism	Yes Recidivism	Total	p < .001
Extrafamilial	1,747 (87.5%)	250 (12.5%)	2,007 (100%)	
Incest	1,514 (95.3%)	74 (4.7%)	1,588 (100%)	
	<b>3,261 (91%)</b>	<b>324 (9%)</b>	<b>3,585 (100%)</b>	

89

## Child Age

Child Age	n (%)
0-13	1,136 (31.7%)
0-15	825 (23%)
0-17 (if incest)	756 (21.1%)
Unknown/Undefined	868 (24.2%)
Total	3,585 (100%)



90

## Jurisdiction

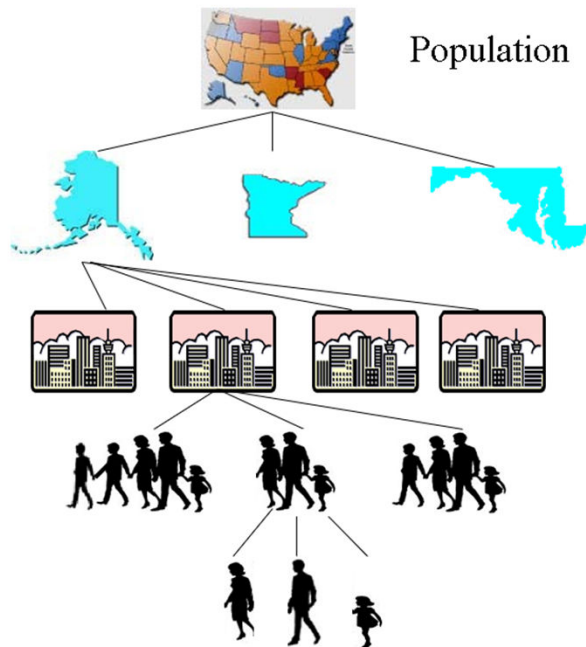


Jurisdiction	n (%)
Canada	1,424 (39.7%)
United States	822 (22.9%)
Europe	1,041 (29%)
New Zealand	298 (8.3%)
Total	3,585 (100%)



91

## Data Analysis



### Multilevel Logistic Model

Compared different models to see:

- If Static-99R predicts sexual recidivism differently based on the type of CSA
- If age cutoff used to define a child influences research findings

92

## Results: CSA Type

The odds of incest CSA sexually recidivating were  
66.9% lower compared to extrafamilial CSA

**Statistically significant**

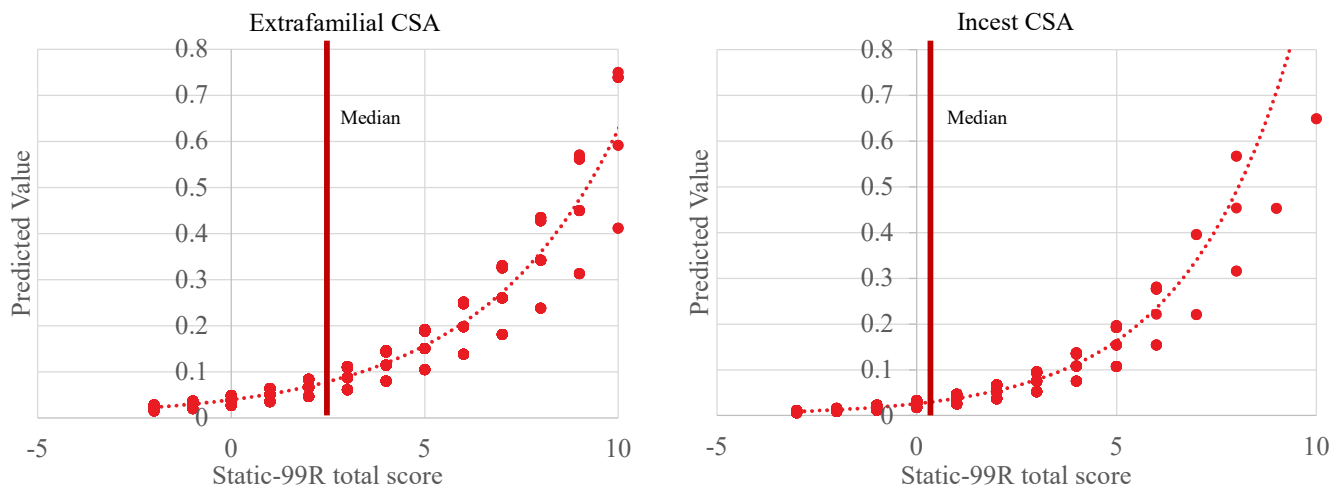
Once Static-99R is added to the model

**Not statistically significant**



93

## Comparing Slopes



The predictive accuracy of sexual recidivism for the Static-99R total score is **THE SAME**  
across both extrafamilial CSA and incest CSA

94

## Results: Child Age

The odds of sexual recidivism for individuals who committed CSA categorized by 0-17 (if incest) were 4.7% more than those categorized by 0-13

The odds of sexual recidivism for individuals who committed CSA categorized by 0-17 (if incest) were 7.4% more than those categorized by Unknown/Undefined

95

## Summary of Findings

Static-99R shows its reliable predictive accuracy across CSA subtypes



Older child age cutoffs show a less homogenous and riskier group



96

# Questions?

Natasha Fracassi

Simon Fraser University  
[Natasha\\_Fracassi@sfu.ca](mailto:Natasha_Fracassi@sfu.ca)



Canada 