

PC Laptop (VGA)

To sign out a VGA cable visit the IMS Classroom Technology Support office in Loeb D283. Once you have the VGA cable you will be able to connect it to your laptop and the classroom projector(s) by using the VGA port located inside the teaching console.

STEP 1

Connect one end of the VGA cable to the port inside the equipment cabinet (labeled VGA), and connect the other end of the VGA cable to your laptop.



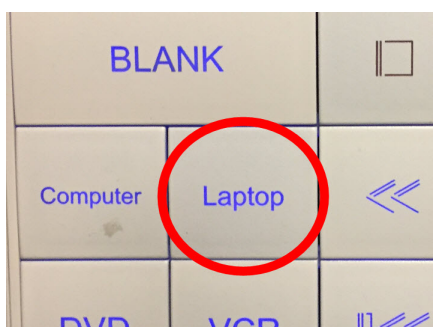
STEP 2

Please note that, if necessary, a separate audio cable is required when connecting a laptop through a VGA connection. This too can be signed out from the IMS Classroom Technology Support office.

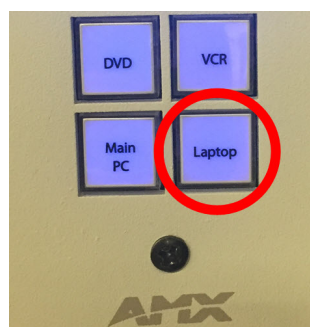


STEP 3

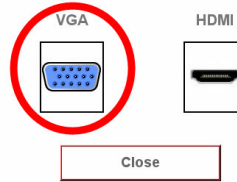
In **single** projection rooms with a keypad, select "Laptop".



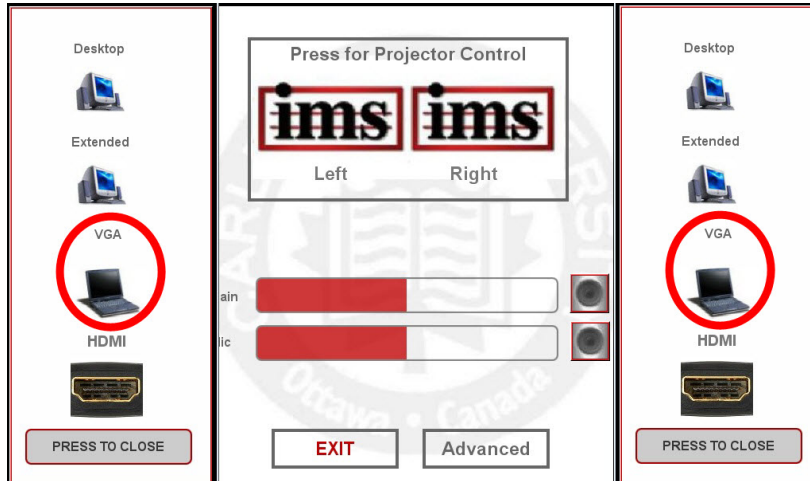
OR



Laptop Control



In **single** projection rooms with a touch panel, select “Laptop” then “VGA”



In **dual** projection rooms, select “Computer” or “Laptop” then “VGA”



Note: You may need to toggle the video output of your laptop before an image displays on an external device like a projector. On a Windows-based laptop, a quick way to do this is to press the Windows button plus the letter P.

| | |
|-----------|---------|
| Acer | Fn + F5 |
| Apple | Fn + F7 |
| Compaq | Fn + F4 |
| Dell | Fn + F8 |
| Fujitsu | Fn + 10 |
| HP | Fn + F4 |
| IBM | Fn + F7 |
| Panasonic | Fn + F3 |
| Toshiba | Fn + F5 |

You can also use this list of function (Fn) keys to toggle the video output on the most common manufacturers of laptops.