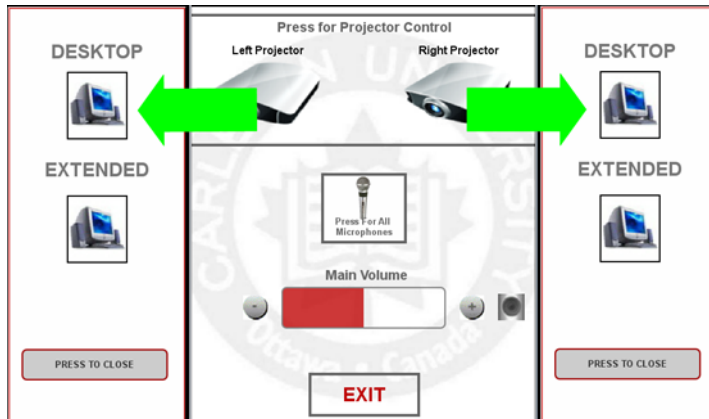


Playing a Power Point

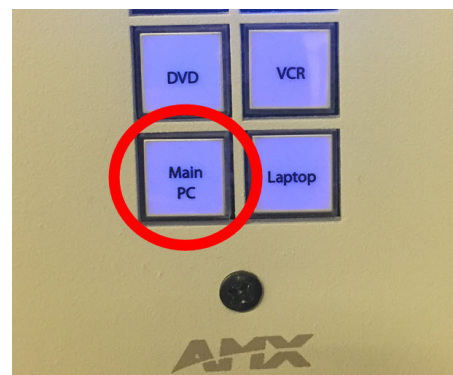
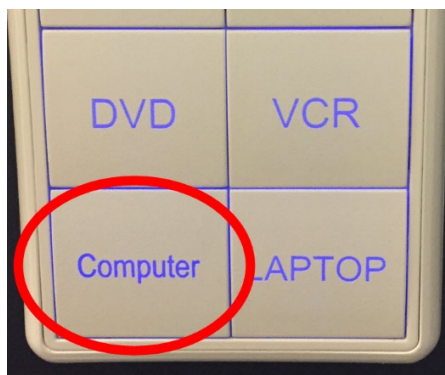
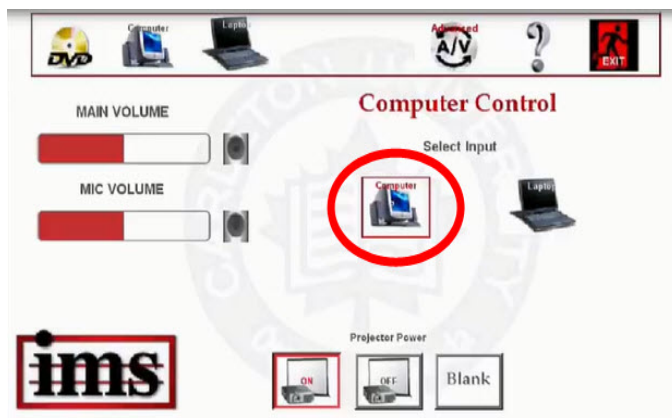
Please note: Regardless the room you are in, the following will quickly allow you to show your PowerPoint Slide Show on both the projector display(s) and the desktop monitor(s).

1. If required, log onto the AMX Touch Panel (passcode: 1724)
2. From the AMX touch panel or keypad, power on projector(s) and select one of the following:

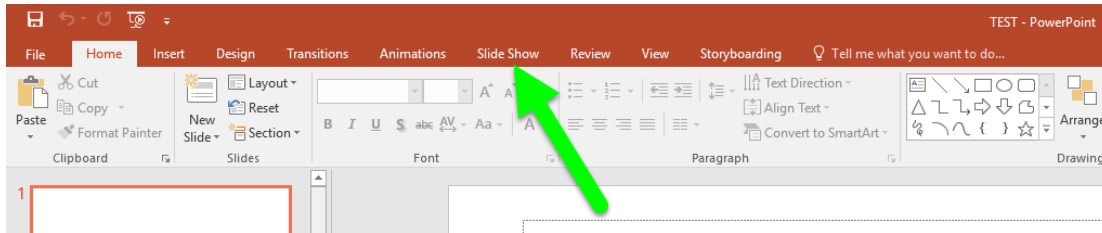
- **Dual Projection Rooms:** Select “Computer” then select “Desktop” for both sides



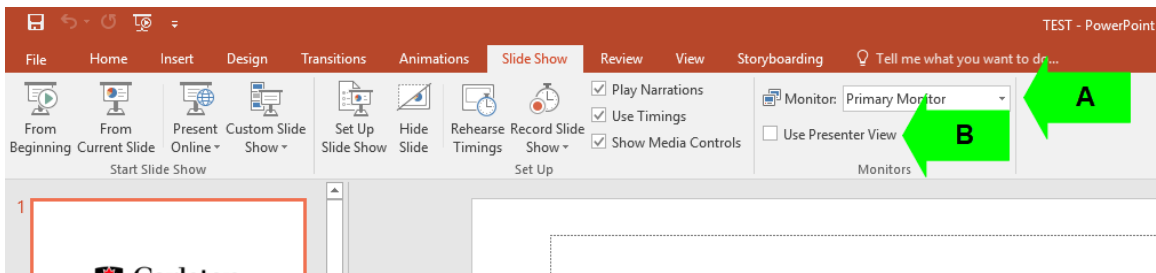
- **Single Projection Rooms:** Select “Computer” or “Main PC” (from the AMX touch panel or keypad)



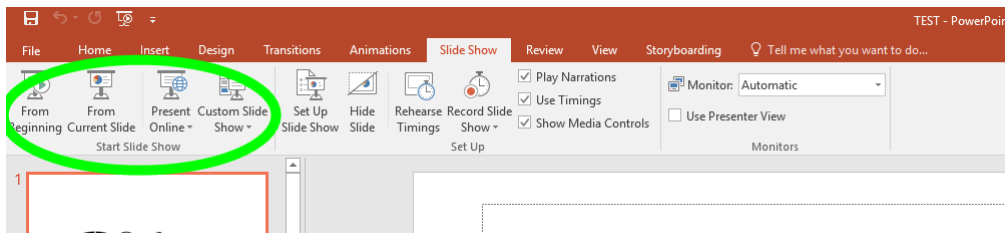
- Log onto the classroom computer and launch your PowerPoint file.
 - You will need your MyCarleton1 account credentials for this
- Click on the Slide Show tab.



- In the Monitor group:
 - Select Primary from the dropdown menu.
 - Ensure "Use Presenter View" is unchecked.



- In the Start Slide Show group, launch Slide Show using one of the available options



- Your slideshow will now appear on the projector(s) and desktop monitor(s)